

Coleman Fold-Down Camping Trailers



More camping fun per gallon.

Today's most energy-efficient,

Getting there...many Americans today spend up to 30% of their vacation time doing just that. And with a Coleman® camper in tow, it's more fun! More economical. Easier. And you save on gasoline, too. It only takes about one extra gallon of gas for every 100 miles of highway travel. Add all this up, and Coleman is the only way to go.

What makes Coleman better than all the others? Innovation of design that keeps them ahead of the times. Hitch up to a Coleman, and you'll discover that everything about

it is built to tow. And when you get to where you're going, you'll find that Coleman really lets the fun unfold!

Remember that exhilarating feeling that comes every time you finally get away? Everything is packed. Work is behind you. And ahead is vacation fun. With Coleman, you'll find that getting there is nothing but miles of smiles! Coleman campers are designed to make that great get-away feeling last throughout your whole vacation.



fully-equipped camping trailers!

Here's why Coleman's the One for the road!

- 1. Less wind drag means better gas mileage.** Coleman's low-towing profile forms a "slip-stream" so wind flows over and around you easily. Minimal wind resistance saves on gas ... means less "buffeting" too. This means you get a more comfortable ride than with high profile campers.
- 2. Wide-track, road-hugging stability.** Coleman's unique frame design allows the tires to be positioned farther apart for a wide track stance that means better tracking and roadability.
- 3. Great rear view mirror visibility.** You'll have a clear view of the road behind you, because Coleman® campers fold down to a low towing height of 47 inches with some models, and 44 inches with others. Your rear view mirror does the job, and no optional side mirrors are required as with other larger campers.
- 4. Less weight means more gas savings.** The hitch weight of every Coleman is less than 200 pounds, and overall weight is up to 25% less than competitive models. This means real gas savings.



Welcome to Coleman® Country!

Where fun and
convenience features
are standard!

More convenience and comfort!

- ① Fully equipped interiors! There's a complete galley, a convertible dinette, plenty of storage space, sleeping for six adults on big 51" beds, plus more!
- ② Ample storage. Chest of drawers on many full-sized models holds anything that folds.
- ③ Coleman's Stepper™! Handy big step for young and old ... standard on all Coleman Campers.
- ④ Exclusive removable dinette table! It's free-standing, so you can use it inside or out.
- ⑤ Posi-crank lift system with two cranking positions provides quick, easy set up.
- ⑥ Patented "Conestoga" wingbed roof design with recessed end windows opens for ventilation even during rain. Only Coleman gives you a big 36" of headroom that lets you sit up in bed!
- ⑦ Wingbed supports you can't lose. They're attached to every bed.

- ⑧ Four stabilizer jacks are standard. A stabilizer jack on each corner means a completely level, secure trailer.
- ⑨ Large, clear, vinyl windows with fine mesh fiberglass screens on both sides of the camping trailer mean a bigger view and a fresher feel of the great outdoors.
- ⑩ Exclusive one-piece screen door keeps bugs out and kids in.
- ⑪ Flip-up dolly-jack. Attached wheel swings up so it stows easily and won't scrape in low spots when towing.
- ⑫ Exclusive vinyl-backed drapes are standard and eliminate shadowing effect at night.

Look for these extra camping luxuries on many Coleman models:

- ⑬ 3-way convertible ice box! Loads at home, and is accessible on the road. Stands upright at counter height while camping. Full urethane insulation, just like your refrigerator at home.
- ⑭ Potty storage cabinet. A hide-away for your portable camping toilet.

- ⑮ 4" thick mattresses. This extra deep "comfort zone" means peaceful sleeping.

Coleman's exclusive LTD models include a queen-sized bed and electric water pump!

Stretch out and sleep in luxury on a huge 75" x 72" queen-sized bed. Electric water pump delivers a steady water stream with just a turn of the faucet! Standard on the Brandywine LTD, Saratoga LTD and Ticonderoga LTD.



Introducing Coleman's exclusive

LTD Models . . .

With the luxury of a queen-sized bed!



Here's camping luxury with a capital "L"! Coleman's three LTD Models all feature this queen-sized bed for king-sized sleeping comfort. You'll always awake feeling extra refreshed and relaxed (and ready for breakfast, too)! In addition to extra space, this luxurious Coleman® bedroom also features 4" thick mattresses for plenty of support and comfort. And like all Coleman wingbeds, you'll find attached supports that can't be lost, and recessed end windows for ventilation even during rain.

You even have the choice of more bed width for extra elbow room or more bed length for the tall campers in your family, depending on how you prepare the bed. Either way, for the ultimate in sleeping comfort, the queen-sized bed on the Coleman LTD Models simply can't be beat.

Coleman's LTD Models

Brandywine LTD
Saratoga LTD
Ticonderoga LTD



Another LTD standard . . .
running water with
the turn of a tap.

Where luxury is standard...the convenience of running water is a must! That's exactly what you'll find on all LTD Models, with a built-in 12-volt Coleman water pump. It's completely automatic, so there are no buttons to push or handles to pump. Whether you're washing the vegetables or simply getting a drink you'll find your "cup runneth over" with the convenience of running water on Coleman's LTD Models!

The Ticonderoga

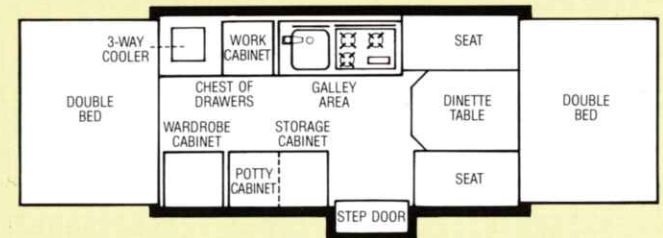
"Check-in" to Coleman's most luxurious full-sized camper!

The only luxury missing here is room service! When you "check in" to the Ticonderoga, you're living in style! This fully-equipped Coleman® camper has a color-coordinated interior with Coleman's top-of-the-line galley, 4"-thick mattresses, complete electrical and water hook-ups, sleeping room for six, plus everything else you need for comfort and convenience.

You'll also find 62 cubic feet of storage, with a swing-up wardrobe cabinet, a chest of drawers, a potty storage cabinet, storage space under the galley, and more storage under the dinette seats. Check out the Ticonderoga today, and you'll want to "check in" tomorrow!



Photos: Extend your counter-top working area with this new "sink-over" that's standard on all models. "A place for everything and everything in its place" comes true with the big chest of drawers. Swing up a wardrobe, and you've got access to all those items you have on hangers. The Ticonderoga features a potty storage cabinet with a swing-up top.



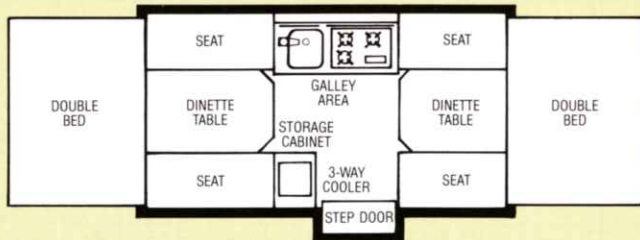
The Saratoga

Room for eight where the livin' is great!

This is really a vacation home on wheels! With dining and sleeping room for eight, you can even bring along another whole family!

There's no shortage on luxury either, with this fully-equipped trailer. You'll find 4" thick mattresses, a Coleman® 3-way convertible ice box, a fully-equipped galley and a color-coordinated interior.

The Saratoga also features two dinette tables that seat a total of eight, two dome lights, and lighted step-door. If you're looking for luxury features plus sleeping and eating room for eight, then the Saratoga is...simply great!



Photos: Coleman's exclusive one-piece screen door is standard on all models, and has a sliding privacy panel that opens to let air in but keep bugs out. Coleman's 3-way convertible ice box can be loaded at home and is easily accessible on the road. It stands upright at counter height while camping. Complete campground hook-ups are standard on the Saratoga. In just seconds you have got 115-volt electrical power with the 25-foot extension cord, including a 10-gallon water tank and city water hook-ups.

Celebrate the g

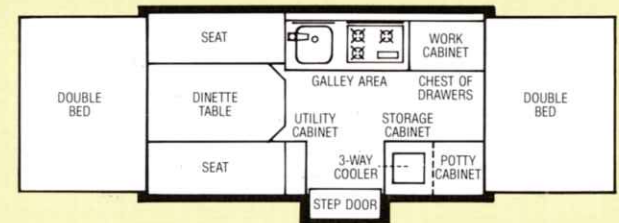
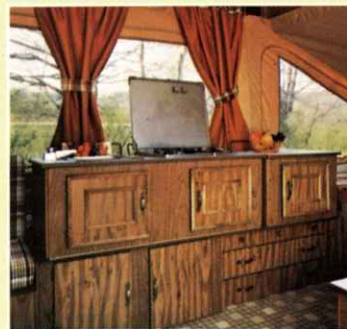
Coleman's two most popular

The Brandywine

Get that "campfire cookin' taste" plus all the conveniences of a modern kitchen! The family chef will love the extra-large galley and additional cabinets and counter-space in the Coleman® Brandywine. And here are a few other ways this camper adds "livability" to the great outdoors: There's a storage cabinet for a portable potty, a wardrobe rack for hanging clothes, a new chest of drawers for added storage space, and a built-in 10-gallon water tank. Best of all, there's room to sleep seven in this full-sized camper, with nature's own sound effects and cool 4-way ventilation!



Photos: Keep the wrinkles out of anything with handy wardrobe rack that's standard on the Brandywine. A large galley means the cooking is limited only by your imagination (or appetite). There's more dining area too, with this extra-large 56" free-standing dinette table that seats six.



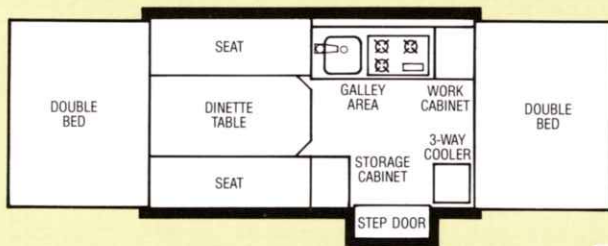
great outdoors!
 lar campers make it easy!



The Valley Forge

Here's Coleman's "most-wanted" camper for fun in the great outdoors! The Valley Forge is a mid-sized, lightweight camper with plenty of deluxe features and room to spare. It unfolds to over 19 feet of living area and sleeping room for six. Inside you'll find a beautiful color-coordinated interior with Coleman's famous 3-way ice box, an extra work counter in the galley, a 3-burner range, plus all our standard features.

Make your vacation home a Valley Forge and you'll find that the great outdoors was never better!



Photos: Coleman's converter lets you choose battery operation or hook-up to 115-volt electrical power for lights and appliances. Every Coleman® "bedroom" features a full 36" to the ceiling so you can sit up without hitting your head. Large, deep galley drawers hold your kitchen items in one place, even on the road. Two posi-crank positions let you safely put up the top fast or slow and easy.



The Gettysburg

For the full-sized, go-anywhere, do-anything family!

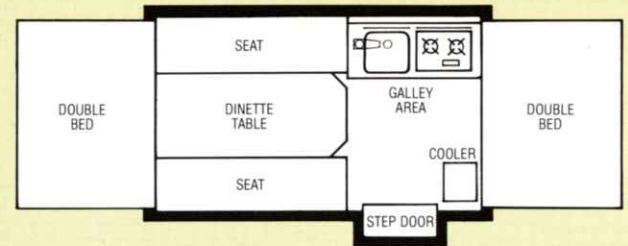
Here's Coleman's full-sized camper that gives you the best of two worlds. It has specially-designed features to make for comfortable backwoods camping, yet all the style you need to "camp-it-up" in the finest campgrounds!

If you're "getting away from it all" where there are no campground hook-ups, just use the standard 12-volt auto extension cord to run your inside dome lights! Seat six around the extra-large 56" free-standing dinette table. And if the men and boys head out for fishing, no amount of mud and grime will harm the durable, yet comfortable, vinyl upholstery.

Even the mattress cushions give you the best of two worlds with an Olefin/vinyl material that looks great yet resists stains and wears better.



Photos: New moisture barrier on all Coleman® campers keeps wingbeds dry around the edges during rain. Exclusive giant pull-down step door features storage for stabilizer bar and crank handle and is standard on all models. Stabilizer jacks on each corner give you easy leveling and a more stable trailer on all models. Attached flip-up dolly jack swings forward so it won't scrape in low spots. Coleman wingbed roof design allows end flap window ventilation even during hard rains.



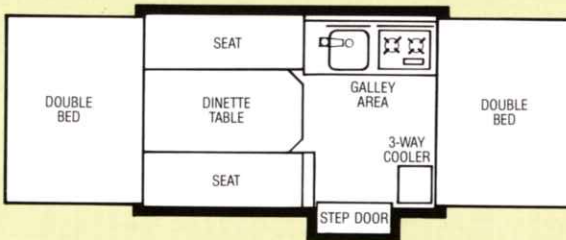
The Ligonier

Coleman's newest lightweight camper with a touch of class!

Introducing a new way to make the fun go farther! The new Coleman® Ligonier combines economy, style and convenience in a camper that sleeps six adults with room to spare. Even with all this space inside, it still folds down to a low 44" towing height and "weighs-in" under 1,000 pounds! Tow it behind any size car and get ready to live in style.

Inside you'll find a fully-equipped interior with two big 51" wide wingbeds, a complete galley including a 2-burner range and stainless steel sink, two overhead dome lights, a big 40" x 73" convertible dinette and more!

How can a trailer that tows behind even small cars fold out to give you this much? Seeing is believing, and the Ligonier is one camper you can't afford to miss!



Photos: Sliding out the roomy wingbeds on any Coleman camper is fast and easy. Attached bed supports on all Coleman models are easy to place and can't be left behind.

The Rebel

Economically priced . . .
sized for fun!

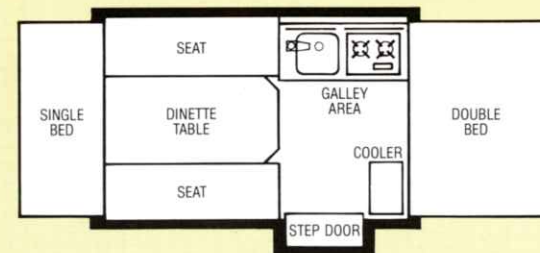
Fold it down, and it's a nifty little trailer with a curb weight of only 890 pounds that tows behind any size car.

Fold it out, and it's the best camping value on wheels. The Coleman® Rebel...real proof that the best things come in small packages (that fold out big).

Inside this five-sleeper, you'll find a color-coordinated interior with drapes, a 2-burner porcelain range, two 115-volt electrical outlets, a 40-quart cooler, a dome light, a convertible free-standing dinette table and (whew!) much, much more!



Photos: Coleman's extra-fine mesh screen lets air in and keeps bugs out. Color-coordinated, washable vinyl-backed drapes ... no shadowing at night. Olefin/vinyl fabric on cushions for long wear and protection. (Vinyl side up for those fun days. Olefin side up for those comfortable nights.)



Coleman's new Country Squire Folding Pickup Camper!

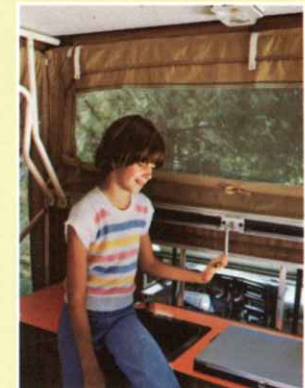
The best camping match for any size pickup...large or small!



Here's the perfect pair! Coleman's new Country Squire folding camper fits easily in your standard or mini-size pickup bed...and opens up to twice the living room of comparable rigid wall units!

Yet on the go, this lightweight folds to a low profile for minimum wind resistance and better gas mileage.

For more camping room and convenience, plus real gas savings, match your pickup with a Country Squire or Country Squire Junior now!

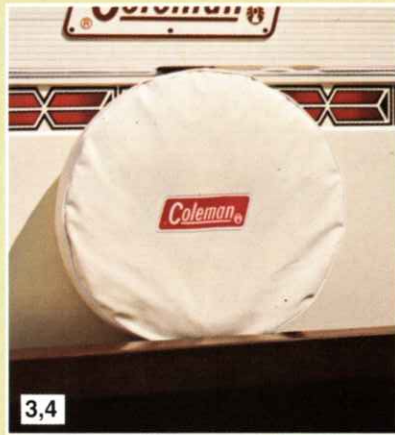


Photos: There's room to sleep four adults on spacious 76" x 44" beds. The Country Squire folds down close to cab height which means less wind resistance for gas savings and easy under-cover parking. And you can take your boat along wherever you go. This galley is complete with 68-quart cooler, 2-burner range, handy sink with 5-gallon water tank and outside drain, plus a dinette table that can be used inside or out. The Country Squire opens to 6-feet plus and is styled for complete camping convenience. Set-up is fast and easy, thanks to Coleman's unique rack-and-pinion lift system.

The fun goes farther with



1



3,4



6



8



2



5



7



9

1. 115-volt air conditioning installation kit. Contains everything you need to install cool comfort. (Air conditioner not included.)

2. Boat and luggage rack. Fishing boat or extra luggage can be conveniently carried on trailer top.

3. Spare tire. Peace of mind wherever you go. Easy access if you need it.

4. Spare tire cover. Makes your trailer more attractive and fits tightly over tire so it's always "ready to roll".

5. Heavy-duty storage bumper. Extra protection for the rear of your trailer and it's great for storage of fishing rods and poles.

6. Dressing room drapes. Washable, full-length drapes make one room into two for standup dressing.

7. Gas bottle cover. A handy way to protect your propane supply and container from the elements.

8. Screened room. Extend your living area with screened-in comfort. Not available for Rebel or Ligonier models.

9. Self-storing vinyl canopy. Extends your camping comfort. Easy set-up. Stores on top of trailer.

Coleman® accessories!



10



11



13



15



12



14



16

10. Privacy curtains. Washable curtains slip into built-in track to completely enclose wingbeds.

11. Slumber Pak. Two pillows and an attractive Coleman double sleeping bag designed especially to fit Coleman mattresses.

12. Refrigerator. Compact design, yet over three cubic feet of cold storage, made by Dometic. Operates on 110 or 12-volt, or gas. Available on Brandywine, Brandywine LTD, Ticonderoga and Ticonderoga LTD.

13. Outside propane campstove. 2-burner stove with optional mount can be attached to the outside of the trailer for those who like to cook outdoors.

14. Heater. Coleman 12,000 BTUs forced-air furnace operates on LP gas, quickly warms the air.

15. Hang-up vanity. Handy organizer includes mirror, paper towel rack, cup dispenser, toothbrush holder and towel hooks.

16. Cabana. An outside dressing room that sets up in just seconds! Ideal for portable toilet and shower too.

Comparative Specifications

Prices, specifications and design are subject to change without notice. All material meets or exceeds applicable flame-retardant standards.

MODELS	Rebel	Gettysburg	Ligonier	Valley Forge	Brandywine	Brandywine LTD	Saratoga	Saratoga LTD	Ticonderoga	Ticonderoga LTD
Extruded Aluminum, Styrofoam Sandwich Panel Hard Top	S	S	S	S	S	S	S	S	S	S
Step Door...w/ Light	S	S	S	S	S-w/Light	S-w/Light	S-w/Light	S-w/Light	S-w/Light	S-w/Light
Extruded Aluminum One-Piece Door w/Sliding Privacy Panel	S	S	S	S	S	S	S	S	S	S
Electric Brakes	0	0	0	0	0	0	0	0	0	0
Tire Size	4.80x8	5.30x12	5.70x8	20.5x8.0x10	20.5x8.0x10	20.5x8.0x10	20.5x8.0x10	20.5x8.0x10	20.5x8.0x10	20.5x8.0x10
Hub Caps	0	0	S	S	S	S	S	S	S	S
Swing-up Tongue Jack	S	S	S	S	S	S	S	S	S	S
Safety Chains and 1 7/8" Ball Coupler	S	S	S	S	S	S	S	S	S	S
Sliding Leaf Spring Suspension	S	S	S	S	S	S	S	S	S	S
Interlock Steel Frame	S	S	S	S	S	S	S	S	S	S
Trailer Size Closed...Width x Length (Overall)	6'8"x10'11"	6'8"x12'6"	6'8"x10'11"	6'8"x12'6"	6'8"x14'6"	6'8"x14'6"	6'8"x14'6"	6'8"x14'6"	6'8"x14'6"	6'8"x14'6"
Trailer Size Open...Width x Length	6'8"x15'10"	6'8"x19'4"	6'8"x17'6"	6'8"x19'4"	6'8"x21'4"	6'8"x23'4"	6'8"x21'4"	6'8"x23'4"	6'8"x21'4"	6'8"x23'4"
Body Color/Stripe	Mt. Vernon Cream/ Autumn Yellow	Mt. Vernon Cream/ Autumn Yellow	Mt. Vernon Cream/ Mohawk Red	Mt. Vernon Cream/ Musket Orange	Mt. Vernon Cream/ Musket Orange	Mt. Vernon Cream/ Musket Orange	Mt. Vernon Cream/ Cumberland Green	Mt. Vernon Cream/ Cumberland Green	Mt. Vernon Cream/ Mohawk Red	Mt. Vernon Cream/ Mohawk Red
Floor Area...Width x Length	6'2"x6'10"	6'2"x8'6"	6'2"x6'10"	6'2"x8'6"	6'2"x10'6"	6'2"x10'6"	6'2"x10'6"	6'2"x10'6"	6'2"x10'6"	6'2"x10'6"
Interior Height Open	6'5"	6'5"	6'5"	6'5"	6'5"	6'5"	6'5"	6'5"	6'5"	6'5"
Cabinet Storage — Cubic Feet	39	42	39	45	59	59	48	48	62	62
Cushioned Vinyl Floor Covering	S	S	S	S	S	S	S	S	S	S
Dinette Table Sizes	38"x30"	48"x30"	38"x30"	38"x30"	48"x30"	48"x30"	38"x30"(2)	38"x30"(2)	38"x30"	38"x30"
Sleeping Capacity	5	7	6	6	7	8	8	9	6	7
Wingbeds x 2	S	S	S	S	S	S	S	S	S	S
Mattress Size x 2	30"x72"-51"x72"	51"x72"(2)	51"x72"(2)	51"x72"(2)	51"x72"(2)	51"x72"-75"x72"	51"x72"(2)	51"x72"-75"x72"	51"x72"(2)	51"x72"-75"x72"
Mattress Thickness	3"	3"	3"	4"	4"	4"	4"	4"	4"	4"
Convertible Dinette Bed Size	40"x73"	56"x73"	40"x73"	40"x73"	56"x73"	56"x73"	40"x73"(2)	40"x73"(2)	40"x73"	40"x73"
Potty Storage Cabinet	N/A	N/A	N/A	N/A	S	S	N/A	N/A	S	S
Wardrobe Cabinet	N/A	N/A	N/A	N/A	N/A	N/A	N/A	N/A	S	S
Chest of Drawers	N/A	N/A	N/A	N/A	S	S	N/A	N/A	S	S
Hi-Lo Kitchen Unit	S	S	S	S	S	S	S	S	S	S
Built-in Water Tank w/Fill Spout (10 Gal.)	N/A	S	S	S	S	S-w/Electric Pump	S	S-w/Electric Pump	S	S-w/Electric Pump
Portable Water Tank (5 Gal.)	S	N/A	N/A	N/A	N/A	N/A	N/A	N/A	N/A	N/A
Outside Sink Drainage System	S	S	S	S	S	S	S	S	S	S
Coleman 3-Way Convertible Ice Box	0	0	0	S	S	S	S	S	S	S
Galley Work Cabinet	N/A	N/A	N/A	S	S	S	N/A	N/A	S	S
Wardrobe Rack	0	0	0	0	S	S	N/A	N/A	N/A	N/A
Drapes w/ Tie Backs	S	S	S	S	S	S	S	S	S	S
Vinyl-Covered Canvas Over Beds	S	S	S	S	S	S	S	S	S	S
115V Electrical Outlets	2	2	3	3	3	3	3	3	3	3
12V Converter	N/A	N/A	S	S	S	S	S	S	S	S
Overhead Dome Lights	1	1	2	2	2	2	2	2	2	2
Poly-Lite™ Cooler	40 Qt.	40 Qt.	48 Qt.	N/A	N/A	N/A	N/A	N/A	N/A	N/A
2-Burner Range and Stainless Steel Sinks	S-w/Porcelain	S-w/Porcelain	S	N/A	N/A	N/A	N/A	N/A	N/A	N/A
3-Burner Range and Stainless Steel Sinks	N/A	N/A	N/A	S	S	S	S	S	S	S
Gas Bottle and Regulator	S	S	S	S	S	S	S	S	S	S
Crank Positions w/ Ratchet	1	2	2	2-R	2-R	2-R	2-R	2-R	2-R	2-R
City Water Hookup	S	S	S	S	S	S	S	S	S	S
Spare Tire Mount	S	S	S	S	S	S	S	S	S	S
Clear Vinyl Storm Windows	2	2	2	2	2	2	2	2	2	2
4-Way Ventilation w/Screening	S	S	S	S	S	S	S	S	S	S
Fire-Retardant 10.1 Army Duck Canvas and Zipper	S	S	S	S	S	S	S	S	S	S
Stabilizers	4	4	4	4	4	4	4	4	4	4
12-Volt Auto Extension	S	S	0	0	0	0	0	0	0	0
Road Height	44"	47"	44"	47"	47"	47"	47"	47"	47"	47"
Hitch Weight (lbs.)	100	100	100	100	140	150	150	160	160	170
Curb Weight (lbs.)	890	1120	890	1150	1310	1335	1300	1325	1335	1360

S-standard equipment; O-optional; N/A-not available *Less optional accessories and coupled to tow vehicle; + Porcelain.

More camping fun per gallon.



FoldDown
Camping
Trailers

The Camper's Camper

The Coleman Company, Inc. Camping Trailer Division, Somerset, PA 15501

The Coleman Company, Inc. reserves the right to make changes at any time without notice in prices, color, material specifications and models. Camping and trailer equipment depicted in product photography may be optional at additional cost. Consult your Coleman dealer for details.

Litho in U.S.A.
Copyright ©, 1978 by The Coleman Company, Inc.
Form No. FL-1-79