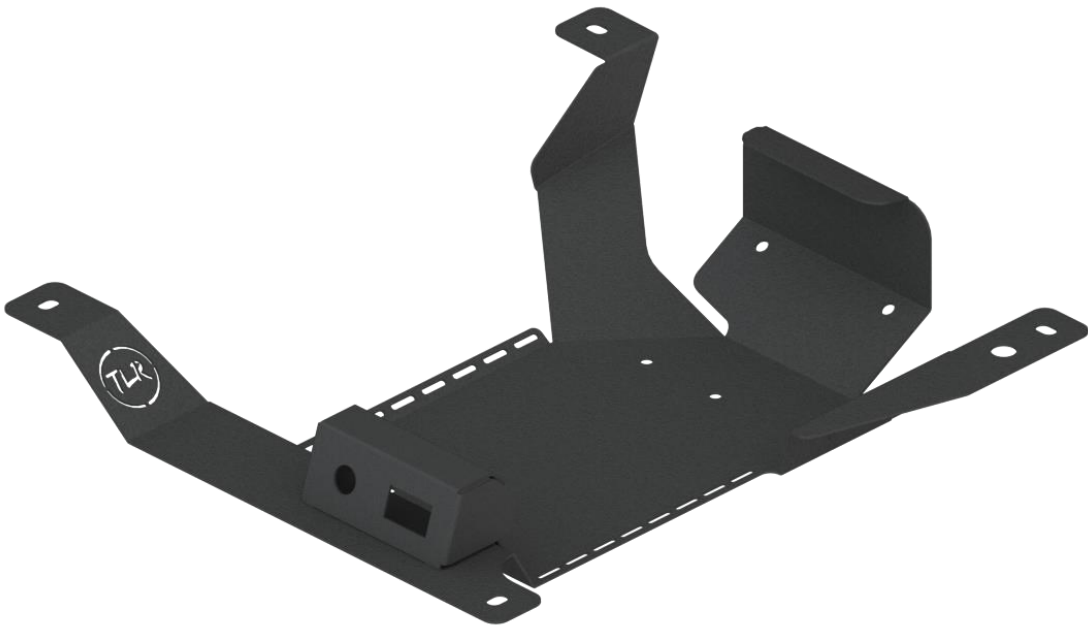




AIR COMPRESSOR BRACKET UNDERSEAT

TLR682403



SUITED TO:

SUZUKI JIMNY JB74W



PRE-INSTALLATION



Read through this installation guide before proceeding.



Fitting time is approx. 60 minutes.



Basic spanner and socket set, Phillips head screw driver.

FITTING KIT

QUANTITY	PART
1	TLR682403-1 (Main Mounting Bracket)
1	TLR682403-2 (Switch/Coupling Mount)
2	M6 Speed Nut (Small)
2	M6 x 20 mm Button Head Bolts
2	M6 x 12 mm Flat Washers
2	M6 Spring Washers
4	Cable Tie 150 mm
1	0740110 (ARB 90deg JIC Fitting)

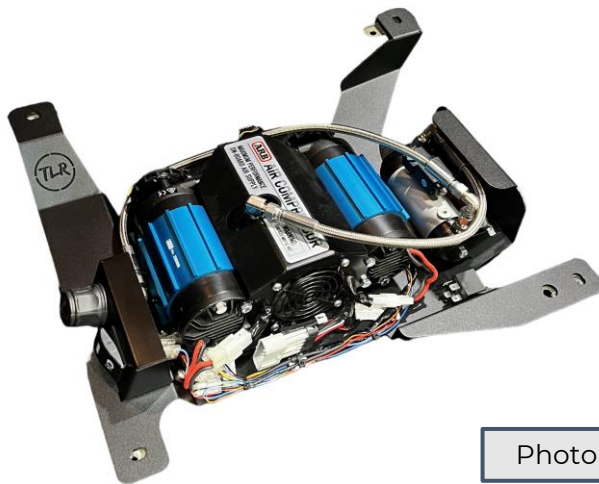


Photo 1

NOTE:

This TLR Products Bracket is designed to suit the ARB Twin Compressor #CKMTA12.

We recommend running all wiring before installation.



FITTING INSTRUCTIONS

1. Put the passenger seat back into the rear most position and disconnect the 2x air bag plugs located under the front of the seat, see Photo 2.
2. Remove the 4x seat mounting bolts and carefully lift seat out of the vehicle.
3. Place the 2x supplied M6 speed nuts in position on the front section of the main mounting bracket as per Photo 3
4. Fit TLR682403-2 (Switch and Coupling Mounting Bracket) on the main compressor bracket as per photo 4 by using the supplied M6 x 20 mm button head bolts, washers and spring washers.
5. Fit the Electrical switch and Air coupling to the bracket as per photo 4 and install a 90-degree swivel elbow fitting on the air coupling and aim towards the TLR Products logo.
6. Install the Supplied 90-Deg JIC fitting into the outlet of the compressor, NOTE: *it is critical to use this fitting in this location to allow adequate clearance on the seat.*



Photo 2



Photo 3





7. Install the ARB Twin Compressor onto the Mounting Bracket using the hardware supplied with the compressor and orientate as per photo 1.
8. If installing the ARB Air Manifold, fit this to the rear section of the mounting bracket and orientate as per photo 1.
9. We recommend finalising all plumbing before installing assembly into the vehicle.
10. Place the compressor assembly into position and align with the 4x seat mounting point see photo 5.
11. Complete all wiring required for installation and place the seat back into position in the vehicle.
12. Install the 4x OEM seat mounting bolts and double check to ensure there is adequate clearance between the seat and compressor plumbing and wiring.
13. Re-connect the 2x airbag electrical plugs previously removed to complete installation.



Photo 4



Photo 5



hello@tlrproducts.com.au
www.tlrproducts.com.au



instagram.com/tlrproducts
facebook.com/tlrproducts