



INSTALLATION INSTRUCTIONS

SS070

ROCK SLIDERS TO SUIT SUZUKI JIMNY
GJ 2018+



Weight: 18Kgs



NOTE

Some images contained in these instructions are generic and are a representation of the actual model and/or parts used. Some steps may also show parts out of sequence to the instructional steps.



1 Hour
Approximately



SAFETY WARNING

Ironman 4X4 requires you read and understand the safety and pre-install directions on page 2 and 3 before commencing installation of this product.

Document Number: SSP070/110723

This product has been tested for side airbag compatibility and therefore the mounting system MUST NOT be modified.

Pre-Installation Procedures



SAFETY WARNING

- This product has been tested for airbag compatibility; therefore, the mounting system **MUST NOT** be modified. The operations of the side airbags are not affected if installation is followed according to these instructions.
- Ironman 4x4 includes specific mounting hardware to ensure correct fitment to your 4WD. The correct fitment of these components is critical for your safety.
- Do not alter or modify this product in any way. Doing so may compromise the strength and integrity of the product.
- Ensure all bolts are tightened to the specified torque.



NOTE

- Only a competent person should perform accessory installations. It is the responsibility of this person to ensure correct fitment.
- Whilst working on this vehicle, always use appropriate safety equipment.
- Read and understand instructions fully before commencing fitment.
- Check the hardware supplied against the contents list on the following pages.
- Do not use this product for any vehicle make or model other than specified in these instructions.
- This product and or hardware must not be modified in any way. Do not remove labels from this product.
- Recording the batch number on the customer's job card is good practice for future reference, or complete the information below and file with customer job card.
- Fitting instructions are correct at the time of publication date and Ironman 4x4 cannot be held responsible for any vehicle changes from the manufacturer. It is the responsibility of the installer to ensure correct fitment.



CARE INSTRUCTIONS

- To maintain the finish of the product, wash regularly using a PH neutral car wash, hose off and chamois dry.
- Do not use acidic or alkaline cleaners.
- Plastic components can be maintained with a silicone spray or similar (non-acidic or alkaline based).



CUSTOMER INFORMATION

Customer Name: _____ Date: _____

Contact: _____

Part Number: _____ Batch Number: _____

(Located on label behind bull bar wing)

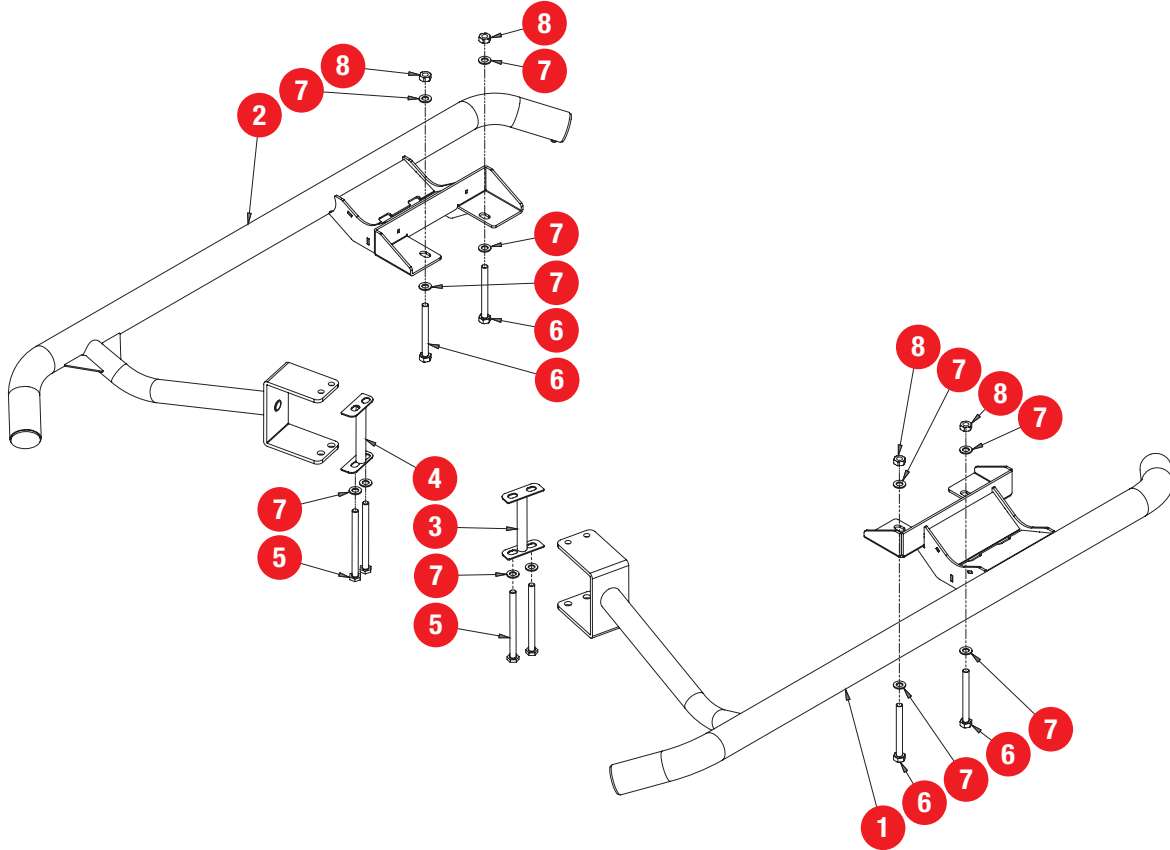


Parts List (Item)

No.	Part Description	Qty
1.	Rock slider - LHS	1
2.	Rock slider - RHS	1
3.	Bracket - LHS	2

No.	Part Description	Qty
4.	Bracket -RHS	1
5.	Hex head bolt M10 x 130mm (P1.5mm)	4
6.	Hex head bolt M10 x 100mm (P1.5mm)	4

No.	Part Description	Qty
7.	Flat washer M10	12
8.	Hex nut M10 (P1.5mm)	4



Tools Required

Metric Spanner Set	Screwdriver Set	Metric Socket Set	Tape Measure	Drill and Drill Bits

Bolt Tension Guide

PROPERTY CLASS	TORQUE ma	NOMINAL DIAMETER - COARSE THREAD			
		M6 x 1	M8 x 1.25	M10 x 1.25	M12 x 1.25
8.8	Nm	10.5	25	49	88
	ft/lb	7.7	18	36	64

Any damage or losses caused by improper installation and application, goes beyond our quality warranty.



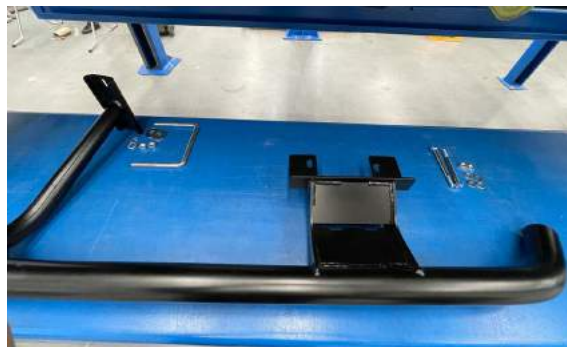
Before Installing

- Before installation, unwrap the hardware.
Unwrap the side steps (and rails), taking care not to damage or scratch in the process. Inspect for any damage.
Ensure side steps/rails application is compatible with the vehicle.



TIP

It is good practice to lay out all hardware to cross-reference against the parts list and to record the Batch Number.



Generic image used as reference only.

Installing

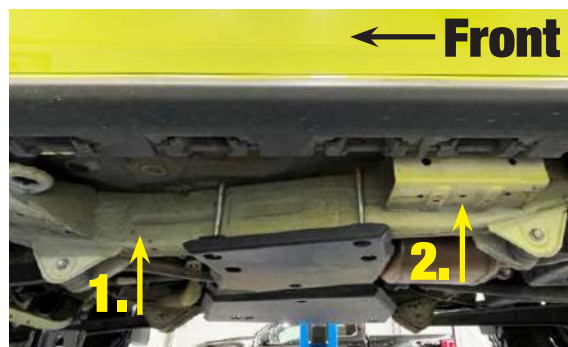
- Lift slider bar into position, sliding 'U' channel over chassis rail (1) and align rear plate with OE holes in chassis box (2).



WARNING

We strongly recommend two (2) persons complete this task to avoid personal injury or damage to the vehicle and/or components. Support slider bar with a floor stand until secure.

Item: 1



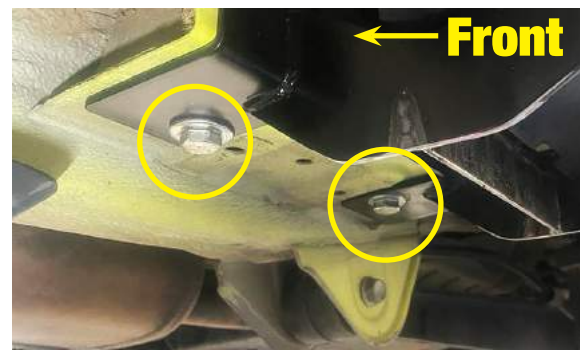
- Position crush tube bracket between the two (2) plates on opposing side of slider bar.
Thread M10 x 130mm bolts supplied through the holes on either side of crush tube into threaded top plate. Finger tighten.

Item: 4 and 5



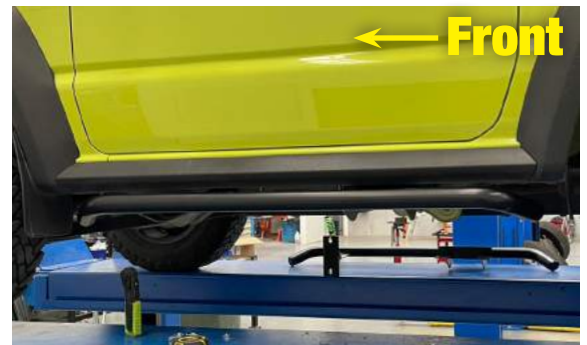
- Secure rear plate to chassis box using M10 x 100mm bolts, nuts and washers supplied.

Item: 6



- Tighten all bolts to torque guide specifications. Refer page 3.

Paint mark all bolt heads.



- Repeat steps 2-6 on the opposite side.

Once Installed...

- Ensure all bolts are tensioned correctly
- Doing a pre-trip check before heading away, or every 10,000km (6,200 miles) is good practice.
- Visually inspect the steps and rails along with retention hardware when needed.
- Stand back and admire your work.

