



Jimny Bonnet Struts

Fitment Instructions

 Installation Time: 40 min



Welcome to the Bushtech Family.

This Fitment Instruction will guide you through each process to mount your Suzuki Jimny Bonnet Struts.

This new addition to your Suzuki Jimny will add that little bit of class to your ride. Once you have your struts installed, your bonnet will open and stop at the correct aperture for you to upgrade your engine or do that much needed routine service.

Let's get started.

What's in the box:



- 2 x Bonnet Shocks. (4043 – 190NM)
- 2 x Bonnet Brackets.
- 2 x Bay Brackets.
- 2 x Fastener Brackets
- 4 x M6 x 20mm Serrated Bolts

Bracket Identification:



Bracket 1:



Bracket 2:



Bracket 3:

Tools you need:



- Ratchet.
- #12 Socket.
- #10 Socket.
- #10 Spanner.
- #12 Spanner.
- # 13 Spanner.
- Flat Screwdriver. (Small)

Step 1:

Open the Bonnet and hook your factory stay onto the bonnet.
This may be the last time you will use this factory stay so make the most of it.

Step 2:

Bolt bracket **1** on top of the hinge holding the bonnet open. Do this on both sides of the bonnet.

Tip: You will want to do one side at a time as to prevent the bonnet from moving out of alignment.



Step 3:

With the use of a size 10 spanner, move the battery bracket out the way to acquire additional space to work in.



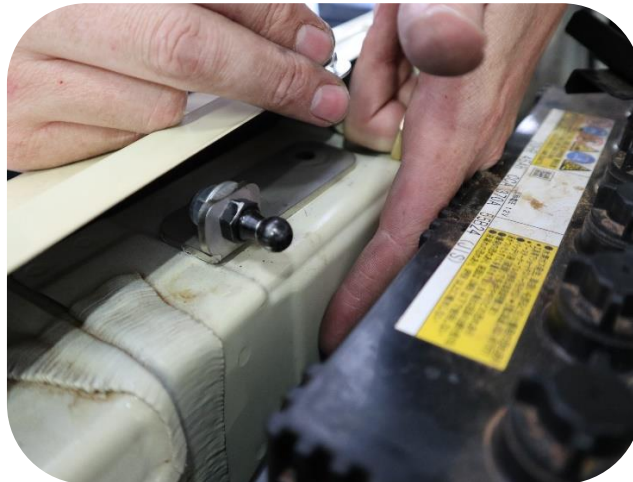
Step 4:

On the other side of the engine bay, you will need to locate two factory holes, one large hole and a small 6mm hole. We will use these holes to mount Bracket 2.



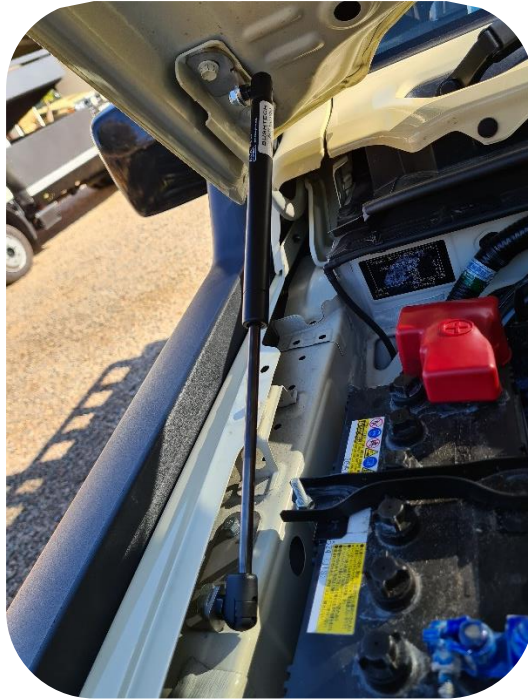
Step 5:

Slide bracket 3 through the large hole and hold it under the steel surface. While holding bracket 3 in place, secure bracket 2 with the supplied M6 bolts. **Note the orientation of bracket 2** in the images below.



Step 6:

Clip Shock over the ball joint. **Note the orientation of the Shock.**



Step 7:

Repeat Steps 1 through 6 to mount the shock on the other side of your bonnet.

