

The BEI HOUSE JB74/JB64 Soft Shackle compatible Recovery Points have been designed and engineered for use with the MAXTRAX Core Shackle and Kinetic Rope, or equivalent products. These Recovery Points have been tested to Australian Standards and are ADR compliant.

BEI HOUSE equipment is engineered and designed using Finite Element Analysis (FEA) and CNC machined which allows each recovery point to integrate with the chassis effectively. This allows us to engineer and design these points to ensure they have the highest capacity, optimal load paths and provide increased safety for both vehicle and occupants. Working Load Limits (W.L.L.) stated correspond to BEI HOUSE equipment only.

This BEI HOUSE Soft Shackle safe Recovery Point is only compatible with the 2018+ (JB64/JB74) Suzuki Jimny

**Materials / Design Specifications:**

SKU: BEI-A-204

Material: Aluminium

Weight: 1.7 kg

W.L.L.: 2,500 kg/ 6,613 lb

**INSTALLATION**

Exploded view installation instructions are provided on the drawing on the back of this document. All torque specifications detailed on the drawing MUST be adhered to. BEI HOUSE takes no responsibility of incorrectly installed products. Only use the fasteners provided with this recovery point. Spares or additional replacement fasteners can be supplied directly from BEI HOUSE (Contact via email or phone to arrange).

**SAFETY RECOMMENDATIONS**

While these recovery points are compatible with other equivalent third-party recovery systems, BEI HOUSE only recommends use with the MAXTRAX Core shackle and Kinetic Rope. All components of the recovery system must only be used in accordance with the manufacturers specifications and safety requirements.

**SAFETY INSTRUCTIONS**

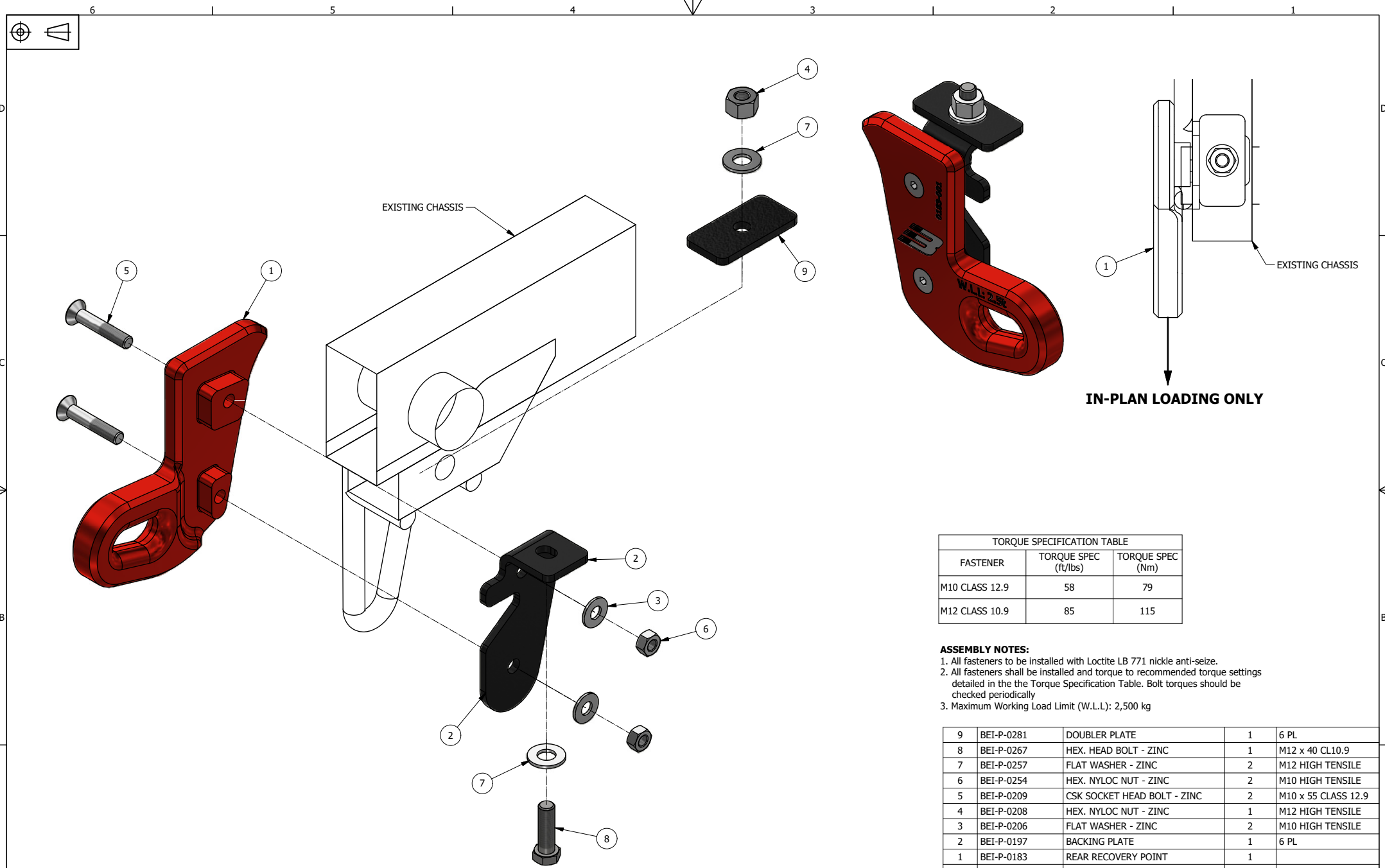
4X4 vehicle recovery can be a hazardous task and pose safety risks for drivers, passengers, and bystanders. Only use BEI HOUSE Recovery Points in the methods set out and detailed within this document and drawing.

- a) persons intending to use the recovery point should consider completing a nationally recognised four-wheel drive training course.
- b) the BEI HOUSE Recovery Points must not be used for lifting or conventional towing
- c) the persons intending to use the recovery point must ensure the recovery point is not damaged and is in a usable condition
- d) other components of the recovery system must only be used in accordance with the manufacturers specifications and safety requirements.
- e) before attempting the vehicle recovery, passengers of the vehicles involved must:
  - (i) exit the vehicles
  - (ii) stand as far away from the vehicles as possible
  - (iii) avoid standing in the path of the vehicle performing the recovery
- f) recovery point must be loaded in-plane only

**CARE & MAINTENANCE**

The BEI HOUSE Recovery Points are suitably designed and engineered for recovery, however due to potential use, or misuse, they are susceptible to severe wear and tear, and to damage such as cracks, scratches, and deformation. Always carefully inspect BEI HOUSE Recovery Points before each use for wear and tear, cracks, scratches, and deformation. DO NOT USE the product if it is damaged. BEI HOUSE bears no responsibility for the misuse of this product.

**THIS DOCUMENT SHOULD BE KEPT IN THE VEHICLE AND REFERRED TO BEFORE EVERY USE.**



TORQUE SPECIFICATION TABLE		
FASTENER	TORQUE SPEC (ft/lbs)	TORQUE SPEC (Nm)
M10 CLASS 12.9	58	79
M12 CLASS 10.9	85	115

**ASSEMBLY NOTES:**

1. All fasteners to be installed with Loctite LB 771 nickle anti-seize.
2. All fasteners shall be installed and torque to recommended torque settings detailed in the Torque Specification Table. Bolt torques should be checked periodically
3. Maximum Working Load Limit (W.L.L): 2,500 kg

ITEM	PART NUMBER	DESCRIPTION	ITEM QTY	STOCK
9	BEI-P-0281	DOUBLER PLATE	1	6 PL
8	BEI-P-0267	HEX. HEAD BOLT - ZINC	1	M12 x 40 CL10.9
7	BEI-P-0257	FLAT WASHER - ZINC	2	M12 HIGH TENSILE
6	BEI-P-0254	HEX. NYLOC NUT - ZINC	2	M10 HIGH TENSILE
5	BEI-P-0209	CSK SOCKET HEAD BOLT - ZINC	2	M10 x 55 CLASS 12.9
4	BEI-P-0208	HEX. NYLOC NUT - ZINC	1	M12 HIGH TENSILE
3	BEI-P-0206	FLAT WASHER - ZINC	2	M10 HIGH TENSILE
2	BEI-P-0197	BACKING PLATE	1	6 PL
1	BEI-P-0183	REAR RECOVERY POINT	1	

ZONE	REV	DESCRIPTION	DATE
	0	ISSUED FOR USE	06/08/2021



2018+ SUZUKI JIMNY  
RECOVERY SYSTEM  
REAR RECOVERY POINT ARRANGEMENT

DATE: 30/03/2021	DESIGNED BY: M.F
SCALE: N.T.S	REVISION: 0

Sheet 1 of 1  
BEI-A-0204

A4