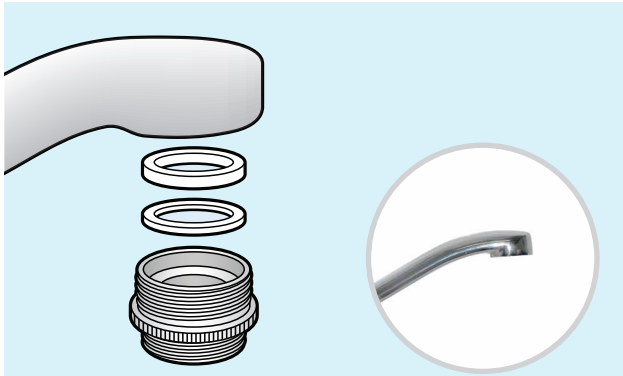


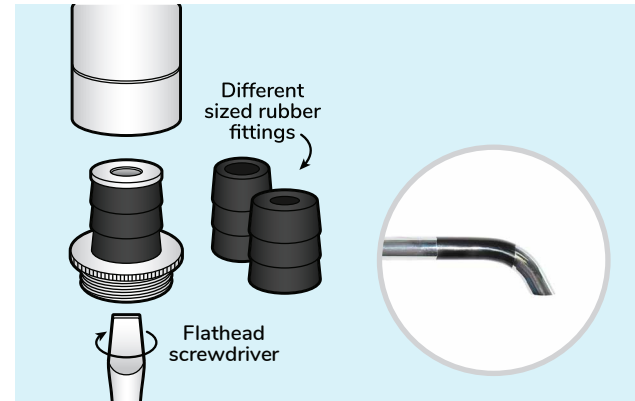
Let's Get Connected

We have a variety of tap adaptors to fit a range of taps and faucets.



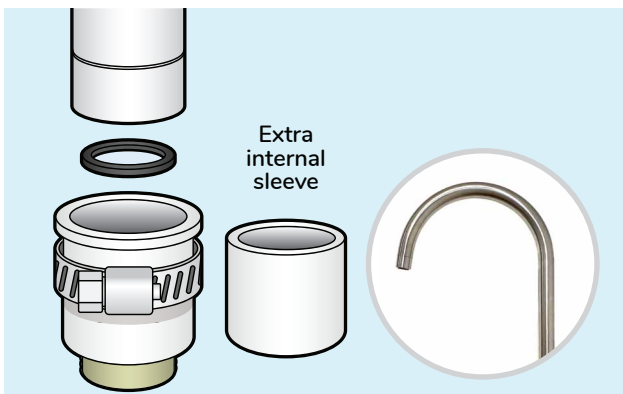
TA1 Adaptor

Adaptor Size: 24mm
Tap Type: Mixer Tap
Tap Thread: Internal



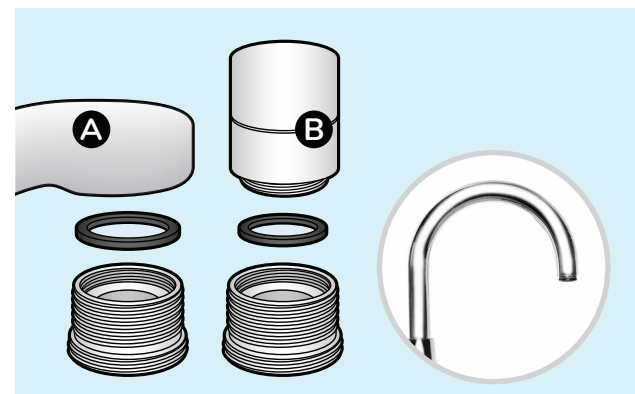
TA2 Adaptor

Adaptor Size: 12.5 - 15mm
Tap Type: Slim Spout
Thread Type: Internal / No Thread



TA3 Adaptor

Adaptor Size: 15-21mm
Tap Type: Thin-Medium Neck
Tap Thread: External / No Thread



TA4 Adaptor

Adaptor Size: 20mm Internal, 17mm External
Tap Type: Slim Spout / Coroma Taps
Tap Thread: 16mm Internal, 21mm External

Identify Tap Thread



Internal / Female
Thread



External / Male
Thread



22mm External / Male Thread
Tap Adaptor not required

Still unsure which tap adaptor is suitable?

If you are unsure which tap adaptor is suitable for your faucet, please contact our friendly team who are able to assist you to find the right solution to help get you enjoying filtered water as soon as possible.

Pure Water Systems (Aust.) Pty Ltd
27 Leda Drive | PO Box 685, Burleigh Heads QLD 4220
☎ 1300 808 966 | ✉ info@purewatersystems.com.au
💻 purewatersystems.com.au

