

KIRAVANS

TM

A man in a white t-shirt is shown from the back, using four orange suction cups to hold a window in place inside a silver van. The van's interior is dark, and the window is being fitted into a frame. The man is wearing a black watch on his left wrist.

WINDOW FITTING GUIDE

www.kiravans.co.uk



Tools required:

Angle grinder, Metal drill, jigsaw, stanley blade, rubber mallet.

Time to complete:

Approx 1.5 hrs per window

DIY difficulty:



Protect your van

Use some wide masking tape to protect your van bodywork next to where you will be cutting. You may want to stick some thick plastic below the window area too in case it gets scratched while working.



Remove top and bottom of the central strut

Inside the vehicle use a ruler and a thin marker pen to mark the cutting line to neatly remove the top and bottom parts of the central strut. You can use a small grinder with a metal slitting disc to cut along the line but ensure the sparks don't damage any part of the vehicle, especially van windows.



Drill guide holes

Use a metal drill bit large enough to allow your jigsaw blade through. From inside the van, drill a hole in each corner of the window opening about 10mm in from the corners.



Mark cutting lines

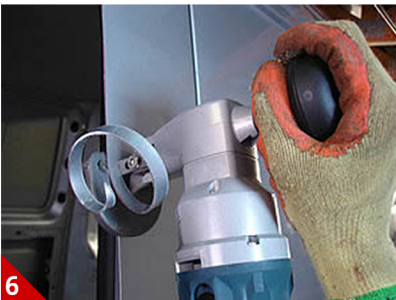
Outside the vehicle, use a marker pen and a straight edge to join up the four holes in a rectangle.



Cut out the panel

Place suction handle in the centre of the panel and cut along each side of the rectangle using a jigsaw. Be sure to stop cutting about 5mm before the next hole to ensure the panel stays secured at the corners while other sides are being cut.

Finally, cut the corners free while holding the handle so the panel does not drop and damage the vehicle.



Remove remaining metal

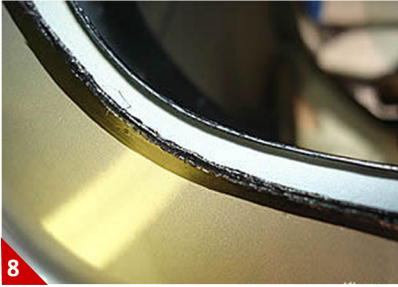
Using metal cutting power shears or a jigsaw, you can now remove the remaining inch or two of metal all the way round the window opening by following the line of the internal skin.



Remove pinch-weld

Use a long Stanley blade to cut away the stiff rubber pinch-weld between the two skins of metal all the way round the window opening.

This is a fiddly job and requires a bit of force, so it can take a bit of time.



Rust proof edge

Rust proof the cut edge of the window opening using a suitable rust inhibitor.



Re-bond metal skins closer together

Use a thin nozzle and some window adhesive. Apply a bead of adhesive between the two skins of metal all the way round the window opening.

Make sure the nozzle is inserted well in and don't apply so much that it will squirt out when the rubber edge trim is knocked on.



Bend inner metal skin to close gap

This is optional but we find that the edge trim goes on easier if you use a rubber mallet to knock the inner metal skin closer to the outer one. This effectively reduces the gap between the two skins.



Knock on edge trim

Tidy up one end of your edge trim and open it slightly with a screwdriver. Starting in the middle of the bottom edge, knock the edge trim on over both skins. A couple of clamps will help hold the 2 metal skins together. Prise out the sliding door handle to make the trim fit behind.



Clean the paint work

Use a degreasing agent (bodyshops use a product called panel wipe) to clean the paintwork all the way round the opening. It is important to remove any dirt, polish or residue to get a good bond.



Prime the metal

Use a clean felt applicator to apply a strip of paint primer all the way round the opening. It is preferable to do this in one constant motion so that there is no build up of layers.

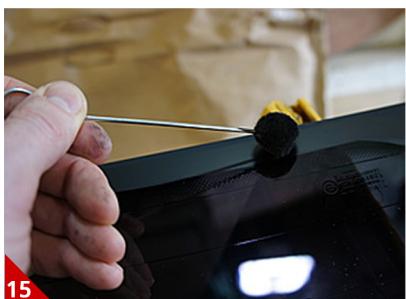
Allow primer to dry for at least 15mins on a fairly warm day, longer in winter.



Check flushness of window fitting

Clean the black ceramic band on the inside of the window using the glass activator tissue.

Use two double suckers to lift the window. Offer it up to the opening and hold it roughly in position. Check that the window fits flush against the black edge trim. If there are any high spots, knock them in with a rubber hammer.



Mark and prime the glass

With the window still held in place, have an assistant inside the vehicle draw lightly round the opening with a pencil. This guide line will ensure that no primer will show inside when the window is primed.

Clean ceramic band with 'glass activator' before applying primer. Place the window back on your trestle and, in a single motion, apply a strip of primer all the way around (about 10mm outside the pencil line is ideal).



Tape straps

Stick two lengths of non-stretch tape to the roof of the vehicle (about 400mm long) and loop them up out of the way.

These are for stopping the glass sliding down once it is stuck in place.



Apply adhesive to vehicle

Ensure adhesive is at room temperature to make it easier to pump.

Using the supplied notched nozzle, apply a continuous triangular bead of adhesive around the window opening keeping the nozzle running next to the black edge trim. On the bottom edge keep the glue as close as possible to the edge trim to avoid it being visible below the glass.



To ensure a watertight seal

On the passenger side, start just below the top right corner and continue clockwise, finish off by feathering outside the start point so no water can get in.

On the driver's side, start just below the top left corner and slightly out from the edge trim, continue around clockwise and finish by feathering inside the start point making a water tight seal.



Bond window to van

Using two suction handles lift the window into place and press firmly onto the adhesive. You will have time to move the glass around a bit to get it in exactly the right place. Ensure the gap at top and bottom is roughly the same using your fingertips as a gauge.

Once happy with the position, stick the tape straps down to stop the window sliding. Now press evenly all around the window.



Drive away time

The vehicle should be safe to drive away in about 90 minutes.

In colder winter temperatures it is advisable to leave more time for adhesive to set.

KIRAVANS 'NO QUIBBLES' RETURNS POLICY

We like to keep things simple and straight forward.

- If its not what you want just send it back for a full refund.
- All returned items must be unused, undamaged, and in the original packing so that we can still sell them as new.
- If you ordered something and reckon its not really what you're after we will happily accept it back for a replacement or refund within 14 days.

*To return an item just fill in the RETURNS FORM supplied or log on to:
<http://www.kiravans.co.uk> and click on the RETURNS link.*



Don't forget to enter your photos to our facebook competition, where we give out two £50 Kiravans vouchers every month for the best photos of you van during conversion. This can be at the beginning, the messy middle bit or looking pretty at the very end.



www.facebook.com/kiravansCCP

www.kiravans.co.uk