

KIRAVANS



Build your adventure.

Fitting Guide



Kiravans VW T5/T6 Single Seat Swivel

Before fitting, read these instructions and check that you have the necessary tools for the task. Having an extra pair of hands to lift the seats in and out will make fitting easier!

You will need:

- 13mm Spanner
- 13mm Socket & Wrench
- 5mm Allen Key



CAUTION:

Before fitting, remove the keys from the ignition, put the vehicle in gear & check the handbrake is on.

Remove the seat:



- Using a 13mm socket & spanner, remove the 2 x front nuts from the seat rail...



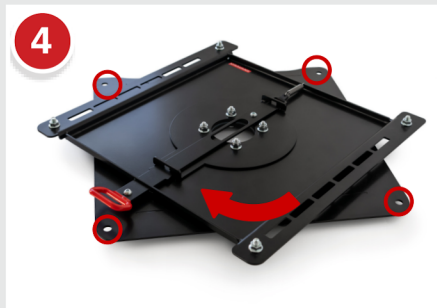
- .. and remove the 2 x rear bolts.
- If you have a rear seat trim fitted, remove this now. Some vehicles also have a fuse holder fitted - relocate this under the seat and secure with cable ties.
- Disconnect any airbag/sensor wires if you have these.



- Lift the seat out of the van.

Prepare the swivel:

- Kiravans single swivels come with the four central assembly bolts loosened to allow you to rotate the swivel during installation. It's important to tighten these as much as you can before installing into your van to minimise any rocking movement.



- Spin the top plate slightly (about 10 degrees) so you can access the 4 holes once the swivel is in the van.



- Tighten up the 4 assembly bolts with a 13mm socket & spanner as much as you can.

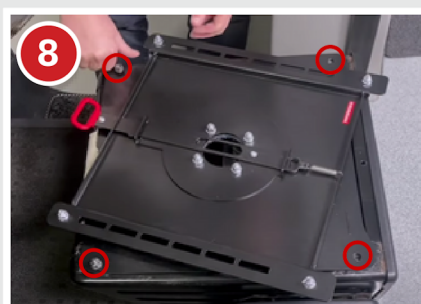


- Remove the four nuts and bolts from the top plate.

Install the swivel:



- Lift the swivel onto your seat base (handle towards the front), locating the lower plate onto the front studs. If you have wires that need reconnecting, feed them up through the centre of the swivel now.



- Replace the original 2 x front nuts and 2 x rear bolts and tighten up with a 13mm socket.

Re-fit the seat:



- Carefully lift the seat onto the swivel plate and line up the holes.
- Insert the bolts you removed in step 6 - up through the swivel base & seat rails and secure. Tighten the bolts fully with a 5mm allen key & a 13mm spanner.
- Don't forget to re-connect any wiring.



- Now the swivel is installed, you can swivel the seat so it's facing forward in the driving position. You will hear it click into place as the front and rear locating pins become engaged.
- Enjoy!



- Note: The original plastic trim at the back of your seat base will no longer fit. You have 2 options: cut off the top section that is now fouling on the swivel base or fit the Kiravans Rear Seat Trim panel that we have designed for the job.

How to use the Kiravans Single Seat Swivel:

- Switch off your engine, remove the keys from the ignition, and put the vehicle in gear.
- Put your armrests up.
- If fitting to a driver seat, release the handbrake and wind the seat backrest forwards so it clears the steering wheel easier.
- You may also need to slide the seat forwards so that the rear corner of the seat clears the B pillar.
- To rotate your new swivel seat, pull the red lever towards the footwell and begin to rotate the seat towards the centre of the van, continue rotating until it faces the rear. Our swivel locks whilst facing forwards in the driving position, it is not designed to lock in the rear position to allow free movement.



Frequently asked questions:

Q: Will my seat rock and move about while I'm driving?

A: All swivel bases will have a slight amount of movement. If your swivel is rocking excessively, then:

- 1.) Tighten up the four assembly bolts in the centre of your swivel and
- 2.) Check that the fixings between the seat and the base are as tight as possible.

Q: Is it just the front pin by the red handle that locks the seat in position?

A: No. Unlike other swivels, we have a second locking pin at the rear of the centre hole. It is worth noting that if this comes loose then your seat will not lock in place properly. Check it is nipped up tight.

Q: Do I need a handbrake lowering kit if I'm using the swivel on my drivers seat?

A: Yes. We have designed a kit especially for this purpose. Any lowering kit will work but we just think ours looks better :-)

Q. Can I use raising shims with this swivel on the driver's side?

A: Yes, but we have put a lot of thought into keeping our swivel as low profile as possible & so we don't supply shims ourselves. We supply a range of batteries that will fit under the swivel without any need for raising it up.

Q: Is the Kiravans driver single swivel compatible with the Kiravans Double passenger swivel?

A: Yes! If you have a single driver's seat and a double passenger seat and want to use our single swivel on the driver's seat, you must also install a double swivel. Without the double swivel, the driver's seat cannot be rotated.

Q: Can I rotate the driver seat if I have a double passenger seat?

A: Yes, but only if you have a swivel under your passenger seat.



Visit our channel for
HANDY HOW TO
videos and more



No Quibble Returns

Kiravans provide a comprehensive no quibble returns policy. You can return any purchase, for any reason, up to 90 days after purchase, for an exchange or refund.

Your plans have changed?

No problem, visit the returns page on our website for details.

