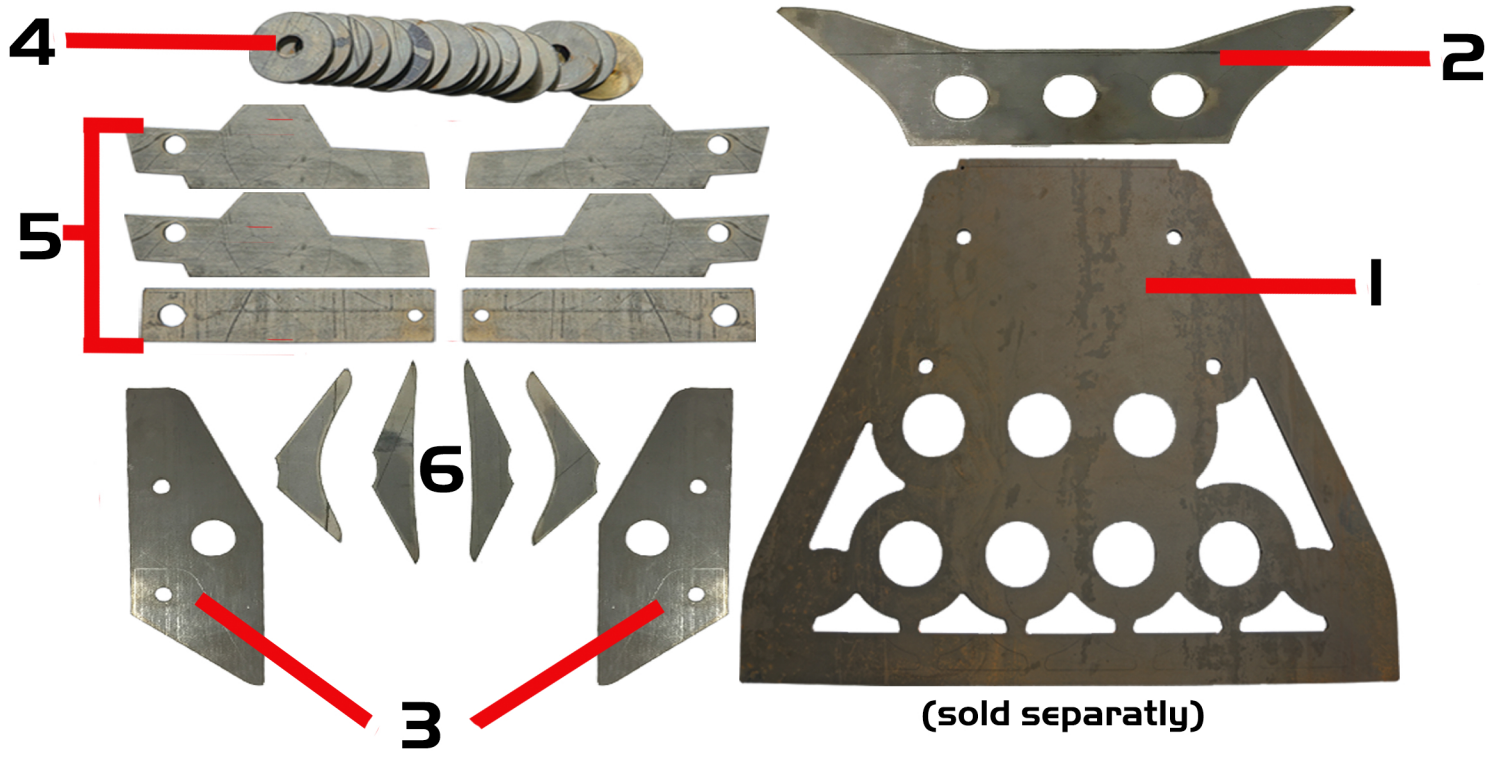


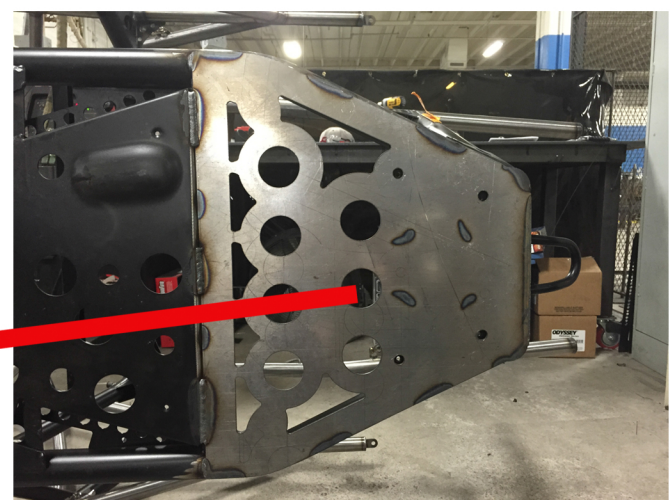


RZR XP1000 WELD IN GUSSET KIT



Cut out raised section of frame so plate will sit flush

Make sure the 3 holes are offset to the passenger side of the vehicle



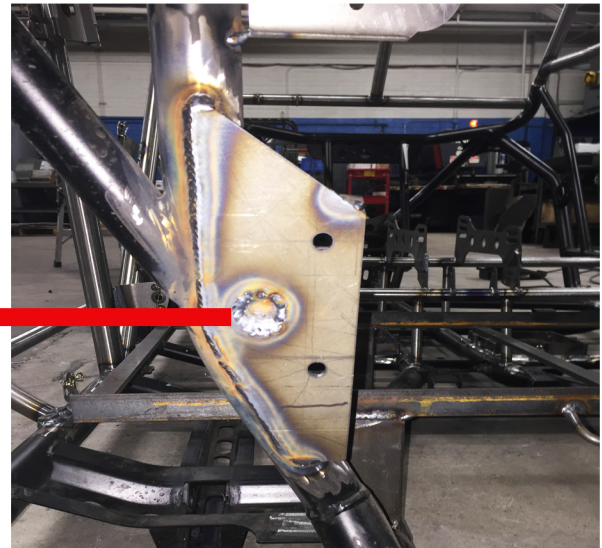
2

**Weld onto front
of chassis**



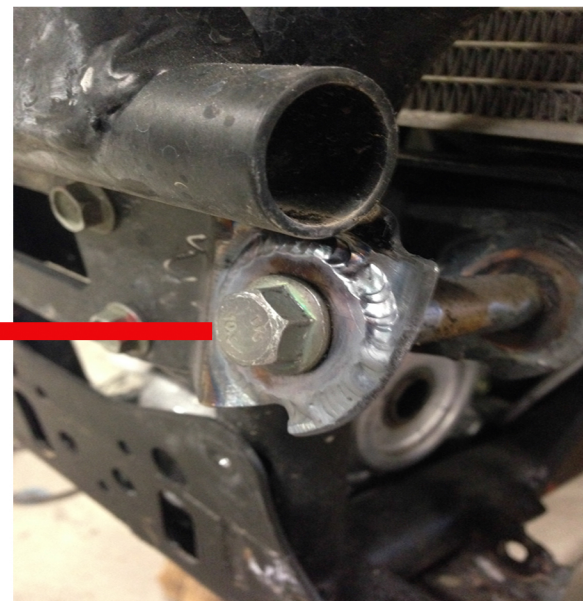
3

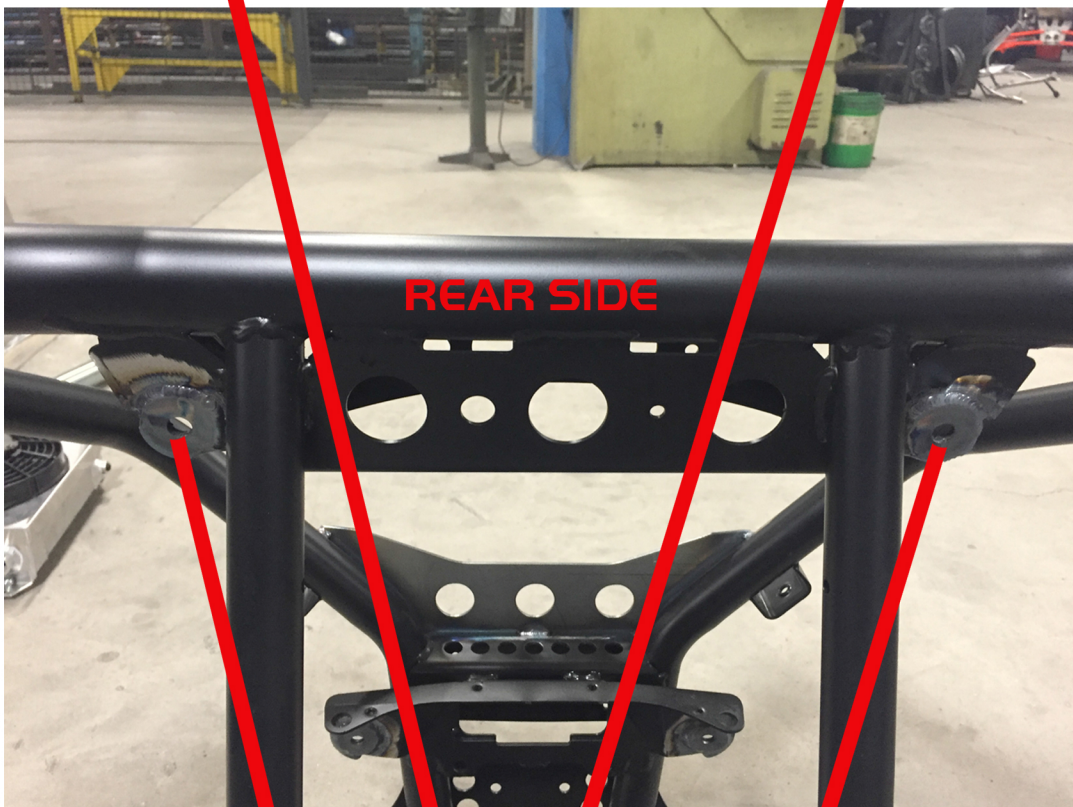
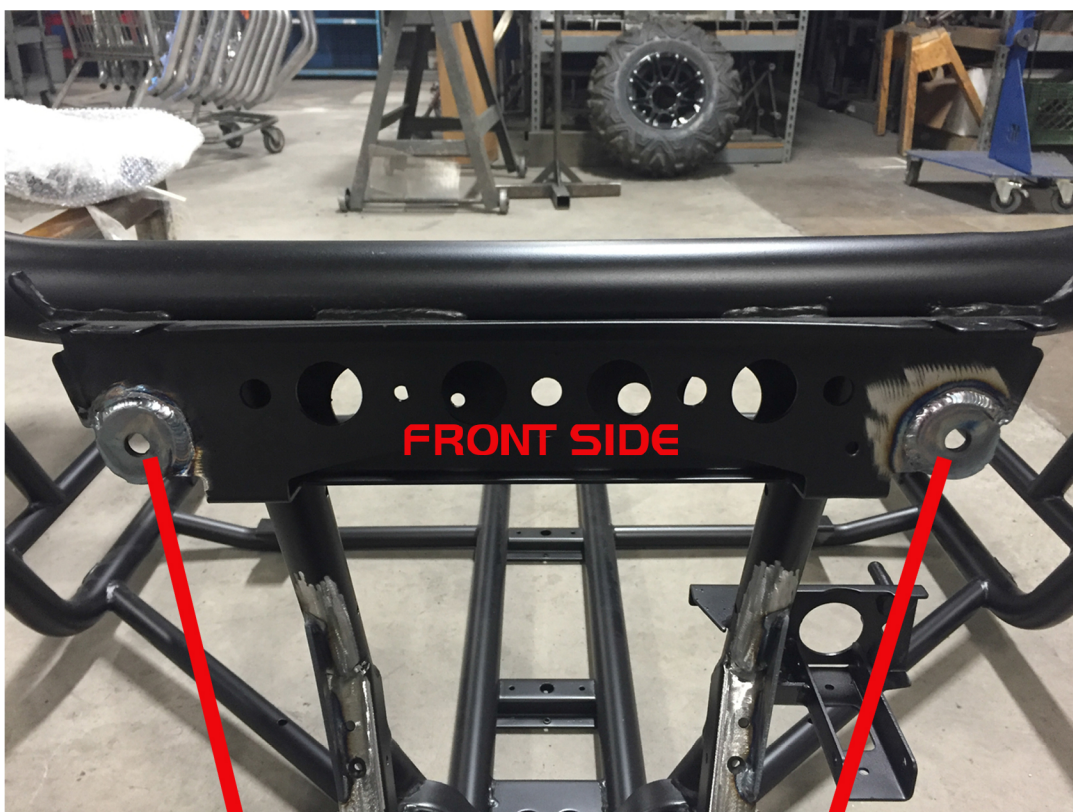
**Weld plates on back side of sway bar
mounting brackets. Weld all the way
around the inside of the large hole.**



4

**Insert a-arm gusset washers on the
outside of the a-arm mounting tabs.
Place bolt through mounting point
and tack weld washers in place.
Remove bolt before welding around
outside of washer.**

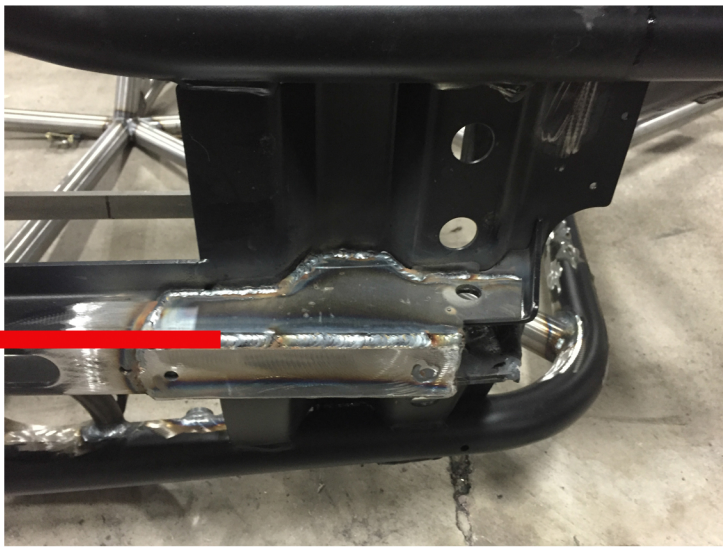




The 4 remaining washers will be used to strengthen the upper shock mount holes. Again you will want to place the washers on the front and backside of the mount and insert the bolt to align the washers. Tac weld the washers in place and then remove the bolt before welding around the outside of the bolt.

5

Align the two side plates with the bolt hole and insert bolt. Tack weld both side plates in place as well as bottom plate. Remove the bolt before finishing the welds.



6

Front
↑

