



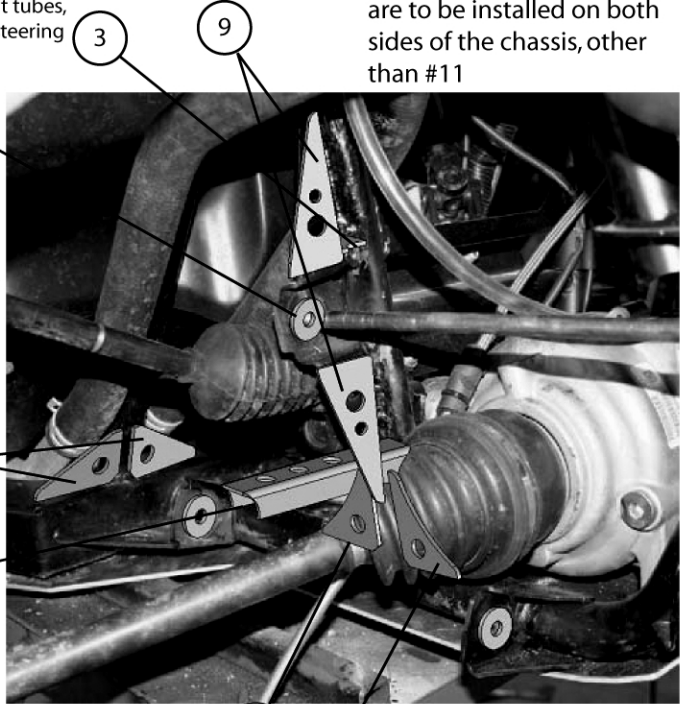
RZR 570 CHASSIS WELD IN GUSSET KIT

#3 goes perpendicular to #9 on top of the a-arm mount tab, wraps around the vertical support tubes, and then connects to the steering rack mount.

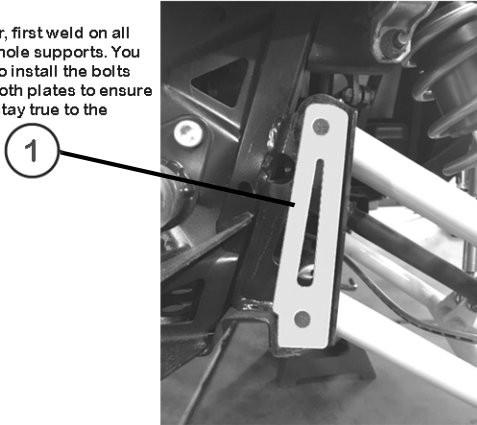
All gussets in this view are to be installed on both sides of the chassis, other than #11



On bolts where #2 is used, you will need to use the supplied Nylon Lock Nuts
The gussets are to be placed outside of the a-arm tabs.
Picture is for reference only!



On the rear, first weld on all the a-arm hole supports. You will want to install the bolts through both plates to ensure the holes stay true to the frame.



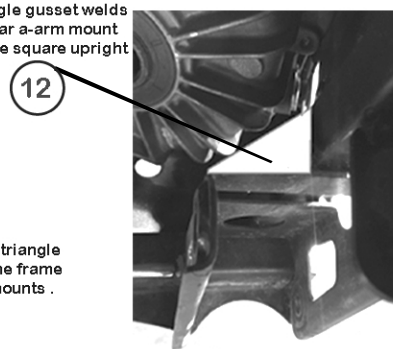
#11 goes between lower main tubes between a-arm mounts, and if installing XTR A-arm kit, leave room for the nut underneath that will go over the small hole in the chassis.

These support the rear upper a-arm vertical tubes to the main lower horizontal tubes. They are to be placed on top of the tubes, so they don't interfere with the a-arms.

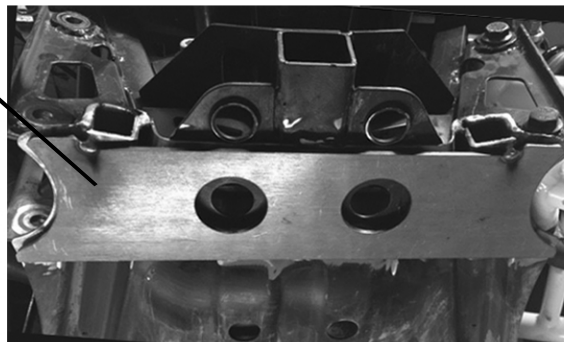
After the a-arm hole supports are welded in place next weld in the large triangle gusset. The bent ear faces out to support the a-arm tab. Some trimming may be necessary. Next add the cross support in that covers the 1x2 frame rail. This will add support for side load against the arms.



The small triangle gusset welds on top of the rear a-arm mount and welds to the square upright tube.



Install the large triangle gussets along the frame rail and a-arm mounts.



Weld in the 2 1x1 tubes to help strengthen the channel prior to installing the main gusset plate

Center the main gusset plate to allow for equal welding on either side.

It may be necessary to clamp the plate down and stitch weld the center before welding the outer sections since the frame is not flat.



RZR 570 CHASSIS WELD IN GUSSET KIT

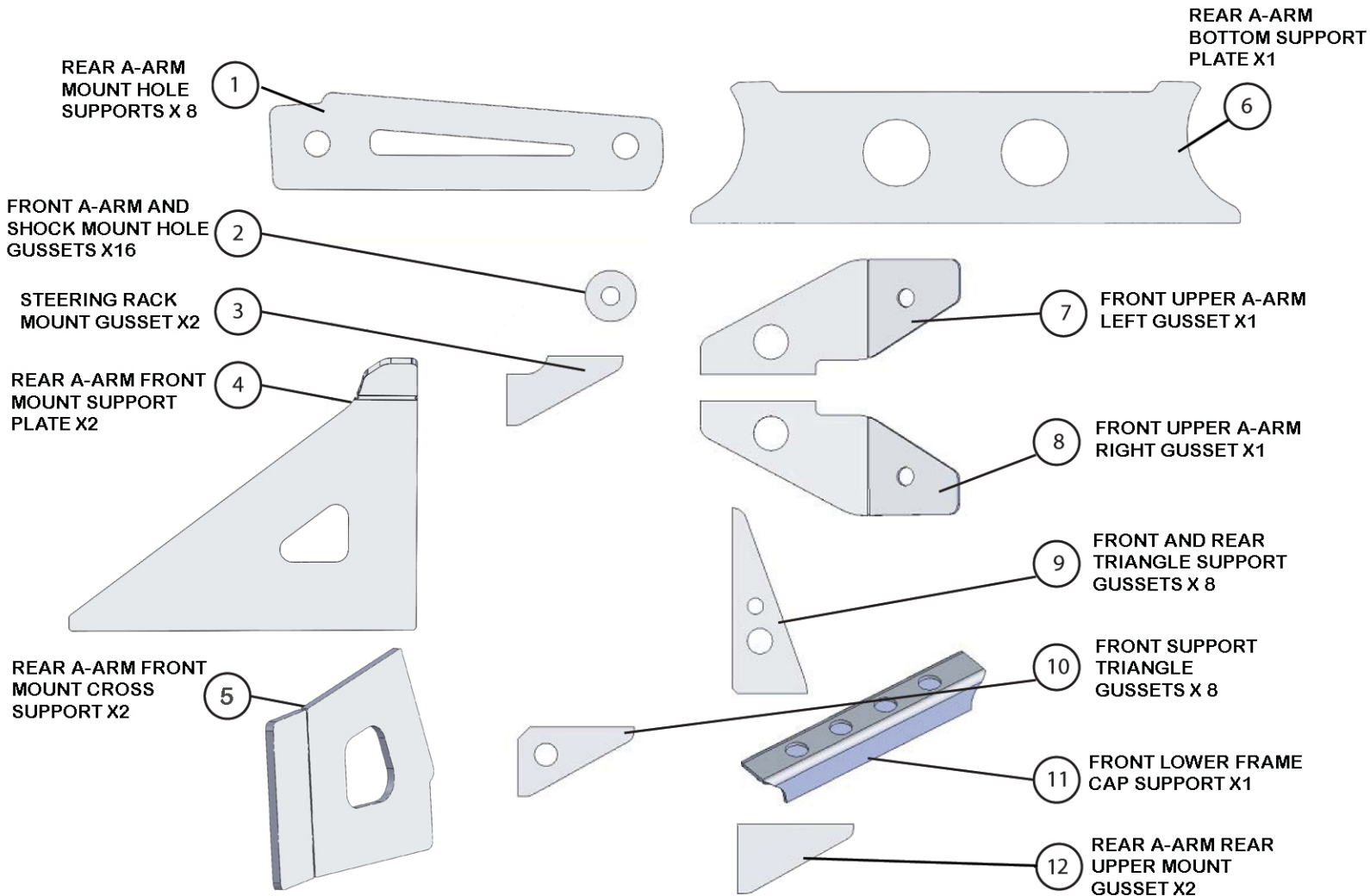
TOOLS NEEDED: 90 Deg. Air Grinder
Sanding/Prep Disks
Welder
Vice Grips
Misc Clamps for welding

Congratulations on purchasing your new RZR Chassis Gusset Kit. This kit will require a good deal of fabricating and welding experience. For best results, we recommend you have a professional fabricator that has a high experience level of welding. The integrity of the chassis is at stake, and you don't want to ruin it. Listed below is all the parts that come with your new kit.

PARTS INCLUDED: PLEASE NOTE: "x 3" means there are 3 of that part included

Parts not shown:

16 - M10X1.25 Nylon Lock Nuts - They are for the a-arm mounting bolts to replace the oem nuts to take up the extra thickness.
2 - 1X1 .120 Square tube. These are for the underside of the rear a-arm mounts.



**CLEANING/
MAINTAINING:**

We recommend that you paint or powder coat the finished chassis to resist corrosion to the newly welded areas.