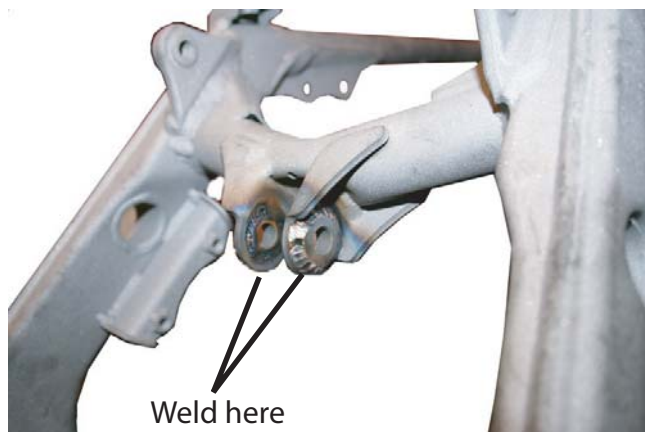
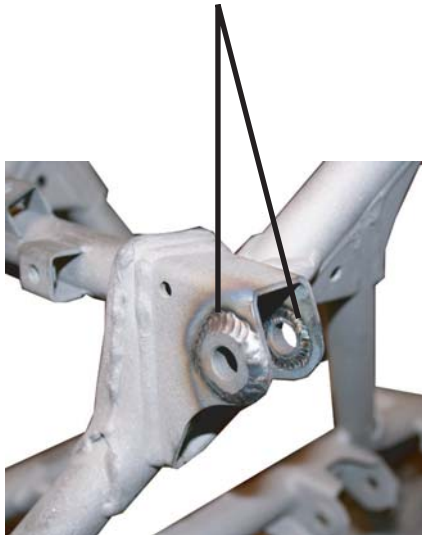




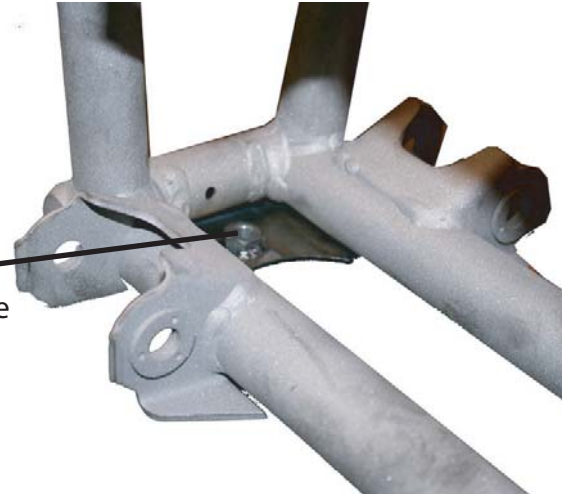
LTR450 OEM CHASSIS GUSSET KIT

Congratulations on purchasing your LTR450 OEM Chassis Gusset Kit. Below are pictures and locations of the parts included in the kit. Lone Star Racing recommends that the parts be installed by a professional fabricator for best results.

We recommend that you fully weld the shock mount spacers in place on your chassis as shown below. These have been known to crack easily due to the unwelded areas.



This is the Front Gusset with Skid Plate mount.



This is the Rear Linkage Gusset. We recommend that you fully weld the OEM Spacers, then install the LSR Gusset, and fully weld the gussets to the OEM tabs

