

STRONGERWELLNESS

ENDURANCE S&S

GYM FLOORING

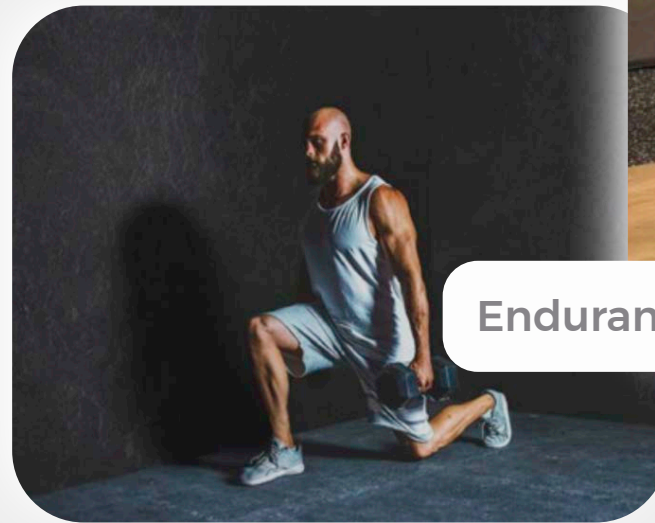


Interactive Experience If you need more information you can click on the product and you will be redirected to the technical specifications.

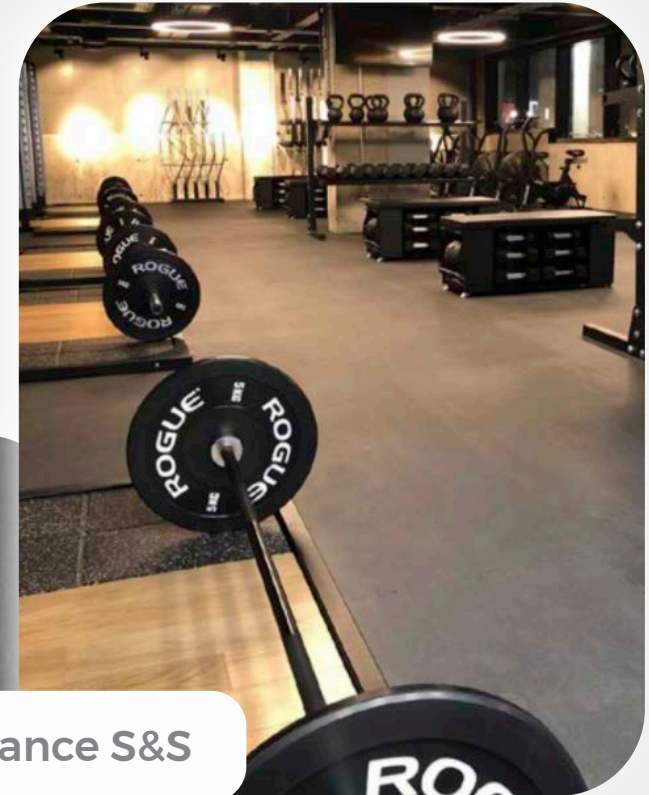
FREE WEIGHT AREAS

Extra-thickness for more protection against impacts for heavy loads.

Unique aesthetics for free weight & power lifting areas where increased sound and vibration absorption is essential.

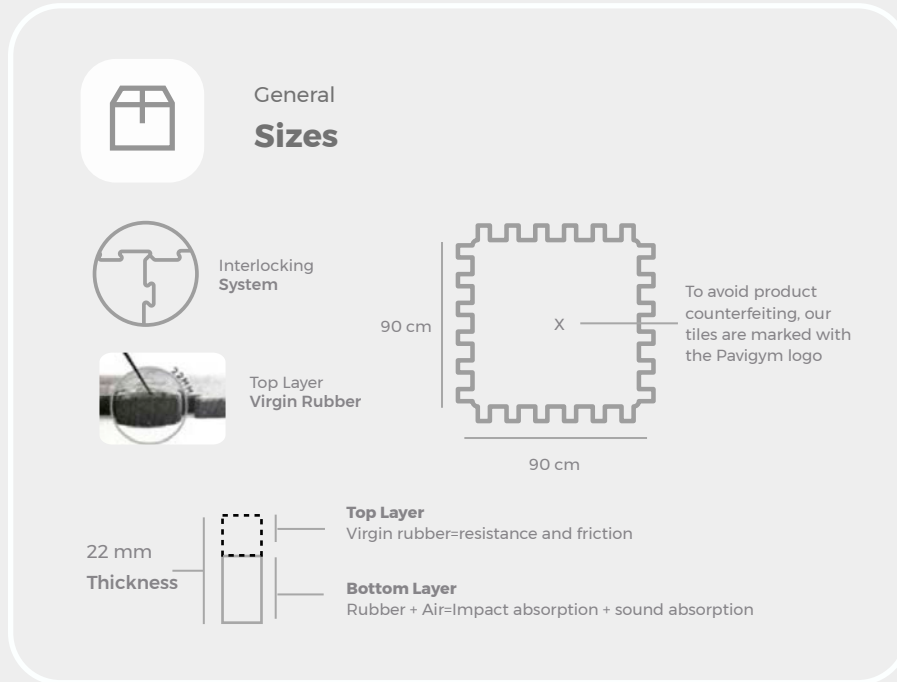


Endurance S&S



Technical Information

Weight		16 kg
Density	UNE-53526	900 kg/m ³
Hardness	Din 53505	75° Shore A
% water absorption	ASTM D570	0%
Coef. Linear dilatation	0° C-40°C	10-4 °C-1
Fire Classification	EN 13501-1	Cfl-s1
Formaldehyde Emission	EN 717-2	<0,5
Sound Insulation	ISO 10140	21 dB

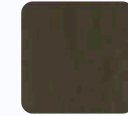


Comparative Chart

	ENDURANCE S&S	ENDURANCE	RECYCLED RUBBER (ROLLS)
Comfort	★★★★★	★★★	★★
Marks resistance (medium loads)	★★★★★	★★★★	★★★
Marks resistance (heavy loads)	★★★★	★★★	★★
Sound Insulation	★★★★★	★★★	★★
Durability	★★★★★	★★★★	★★★
Hygienic/Anti-bacterial protection	★★★★★	★★★★★	★★
Thermal Insulation	★★★★★	★★★★★	★★★
Water resistance	★★★★★	★★★★★	★★★
Easy to install & maintain	★★★★★	★★★★★	★★



Texture
COLOUR



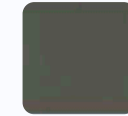
Wengue



Beechwood



Jet Black



Stone Grey



B. Marble

Colours

*Contact us for more details about availability.

SPECIAL



Cyan



Lime



Red



Walnut

*The appearance and color of these images may differ slightly from the final product.

*Samples available on request

THANKS!



For more information

Call us | Write us