

# de Le Cuona

## FIG INDULGENE

*"In the canvas of nature's abundance, fig colours unfurl as the deepest earthy tones, melding the richness of soil with the nurturing embrace of the seasons."*

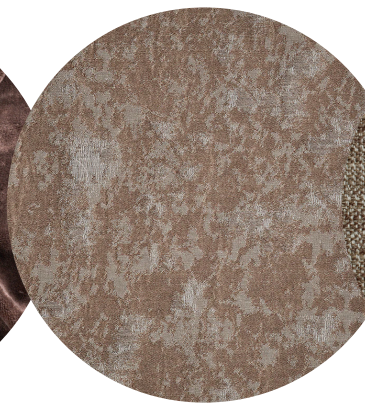
Bernie de Le Cuona



BISON - MADDER



LA BOHÈME - FIG



HERMITAGE - ROSE  
MARBLE



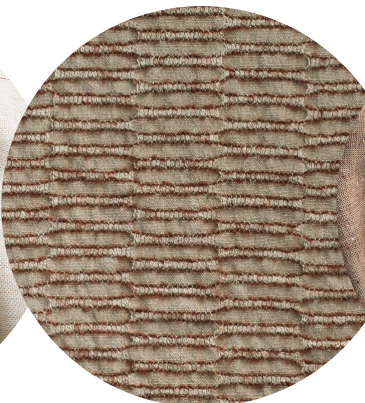
TATAMI - PICKLE



ELIZABETH PAISLEY -  
PHEASANT



MURAL - SUN



NARA FOREST -  
MAPLE



CAVE CLOTH -  
BEETLE