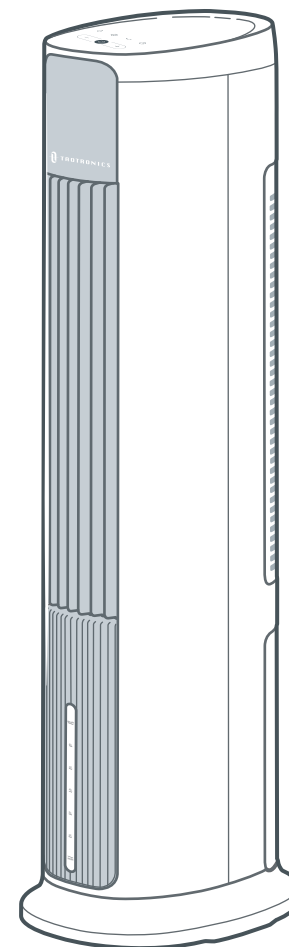




# AIR COOLER



**TAOTRONICS**

**Questions or Concerns?**  
[support@taotronics.com](mailto:support@taotronics.com)

TT-TF007  
**User Manual**

# THANK YOU

FOR BEING OUR CUSTOMER



Your purchase is truly appreciated!  
We hope you are over-the-moon with our product!

# CONTENTS

<b>IMPORTANT SAFETY INSTRUCTIONS</b>	02
<b>KNOWING YOUR AIR COOLER</b>	04
<b>USING YOUR AIR COOLER</b>	08
<b>CLEANING AND MAINTENANCE</b>	13
<b>TROUBLESHOOTING</b>	16

# 01

## IMPORTANT SAFETY INSTRUCTIONS

---

Cooling and  
Humidifying Air In  
Your Living Room

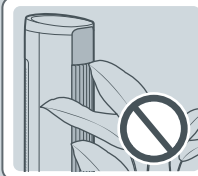


## DANGER

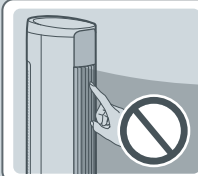
BEFORE USING THIS APPLIANCE READ ALL INSTRUCTIONS AND CAUTIONARY MARKINGS IN YOUR USER MANUAL AND ON THE APPLIANCE



**DO NOT** touch or hold the mains plug with wet hands.



**DO NOT** block or cover air flow to or from the Fan while in operation.



**DO NOT** insert fingers or objects through the grille while in operation.

## INTENDED USE

- This appliance is not intended for use by persons (including children) with reduced physical, sensory or mental capabilities, or lack of experience and knowledge, unless they have been given supervision or instruction concerning the use of the appliance by person responsible for their safety.
- Close supervision is necessary when any appliance is used by or near children. Children should be supervised to ensure that they do not play with the appliance. Cleaning and user maintenance shall not be done by children unless they are older than 8 and supervised.
- Use the appliance only for intended household purposes as described in this User Manual. Any other use is not recommended that may cause fire, electric shock, or injury to persons.

## ELECTRICITY SAFETY

- This appliance must be provided with correct voltage via a professionally installed power socket. Make sure the voltage indicated on the label of the appliance is the same as your local supply.
- **DO NOT** operate the fan with a damaged cord or plug or if the product malfunctions, is dropped or damaged in any manner.
- To reduce the risk of fire or electric shock, DO NOT use this fan with any solid-state speed control device.
- **IMPORTANT** - This appliance has a polarized plug (one blade is wider than the other). To reduce the risk of electric shock, this plug is intended to fit in a polarized outlet only one way. If the plug does not fit fully in the outlet, reverse the plug. If it still does not fit, contact a qualified electrician. Do not attempt to rig this safety feature.

## RELATED TO USE

- DO NOT use this Fan to ventilate areas where flammable liquids or vapors are used, stored or are present.
- DO NOT attempt to disassemble, repair, modify or replace any part any part of your product. All servicing should be performed by qualified personnel only.
- Always make sure to place the Fan on a flat, level surface before operation.
- Keep the cord out of heavy traffic areas and where it will not be tripped over. To avoid fire hazard, NEVER route cord under furniture or appliances.
- Always unplug the appliance before cleaning, making any repairs or servicing, or whenever not in use.
- It is normal that there is noise during operation. If too loud, please set the fan to lower speed.

## FOR HOUSEHOLD USE ONLY

# SAVE THESE INSTRUCTIONS



Regular Check

**HAVE YOUR AIR COOLER CHECKED REGULARLY FOR ANY SIGN OF MALFUNCTION!**

**Check if Plug, cord or appliance is damaged**

Stop using, check FAQ and contact TaoTronics Support Team.

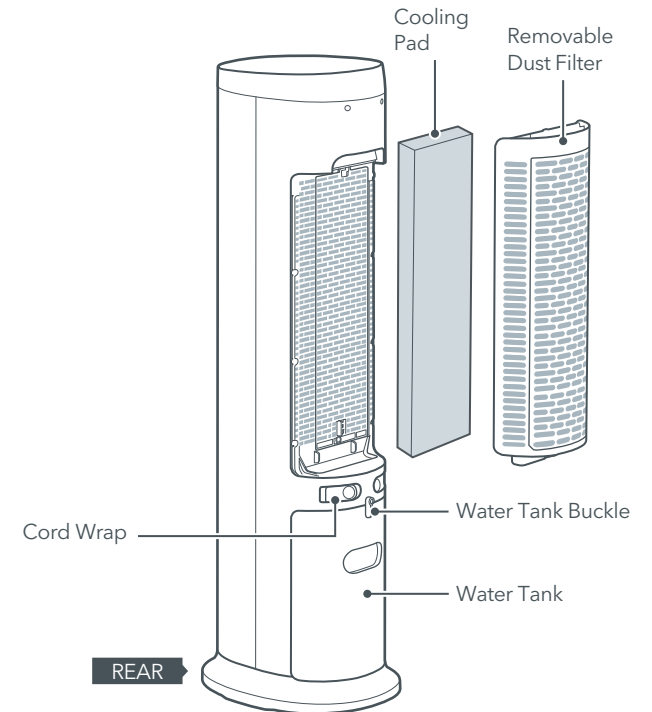
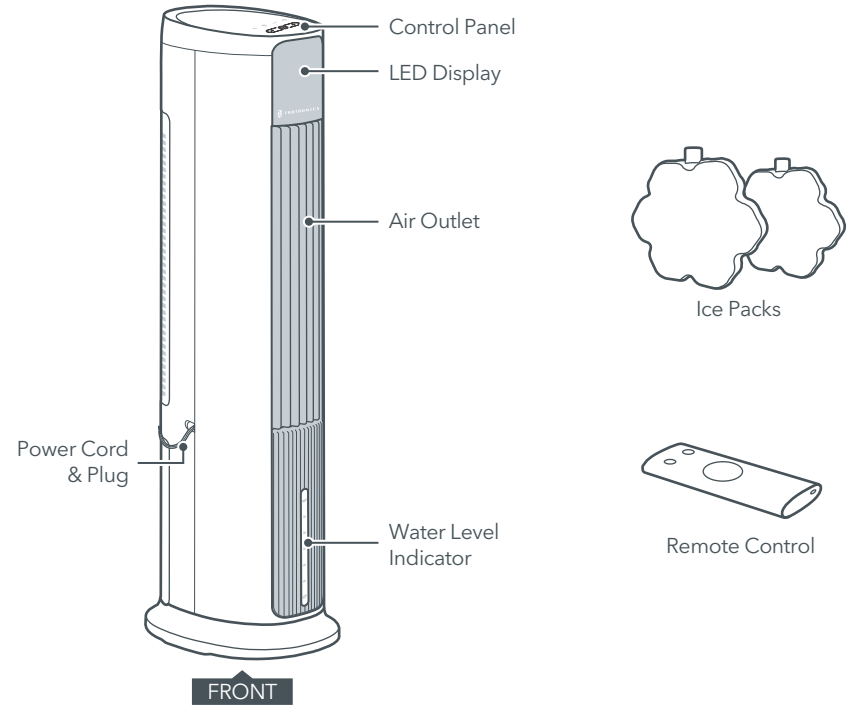
## SPECIFICATIONS

Model	TT-TF007
Input	120V~ 60Hz
Rated Power	80W
Max Cap. Of Water	7L / 1.8 Gallon
Max Oscillation	60°

# 02

## KNOWING YOUR AIR COOLER

Cooling and Humidifying Air In Your Living Room



## Control Panel

**Fan Mode**  
Press to select Normal / Sleep / Natural mode.

**Auto ON/OFF Timer**

- Press once then +/- to select 0.0-10h timer.
- Press once again to confirm setting.
- Long press to cancel.

**Power ON/OFF**  
Turn on/Standby mode

**Cooling / Humidifying**  
Press to turn on or off cooling / humidifying.

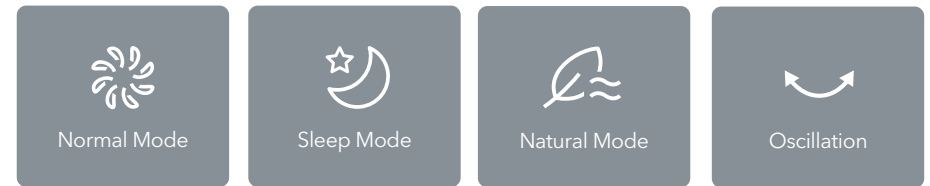
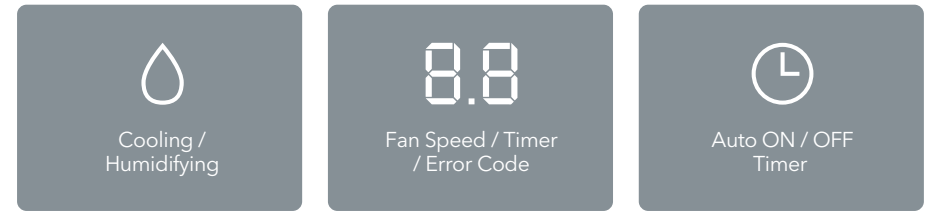
**Oscillation**

- Short press to start/stop oscillating.
- Long press to restore to factory setting.


**Fan Speed / Timer -**  
Short press to decrease fan speed or timer.

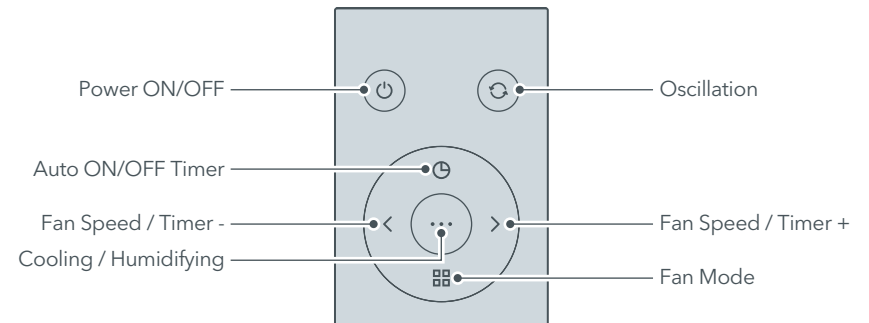
**Fan Speed / Timer +**  
Short press to increase fan speed or timer.

## LED Display



## Remote Control

 For added convenience, the same control buttons can be found on the remote control.

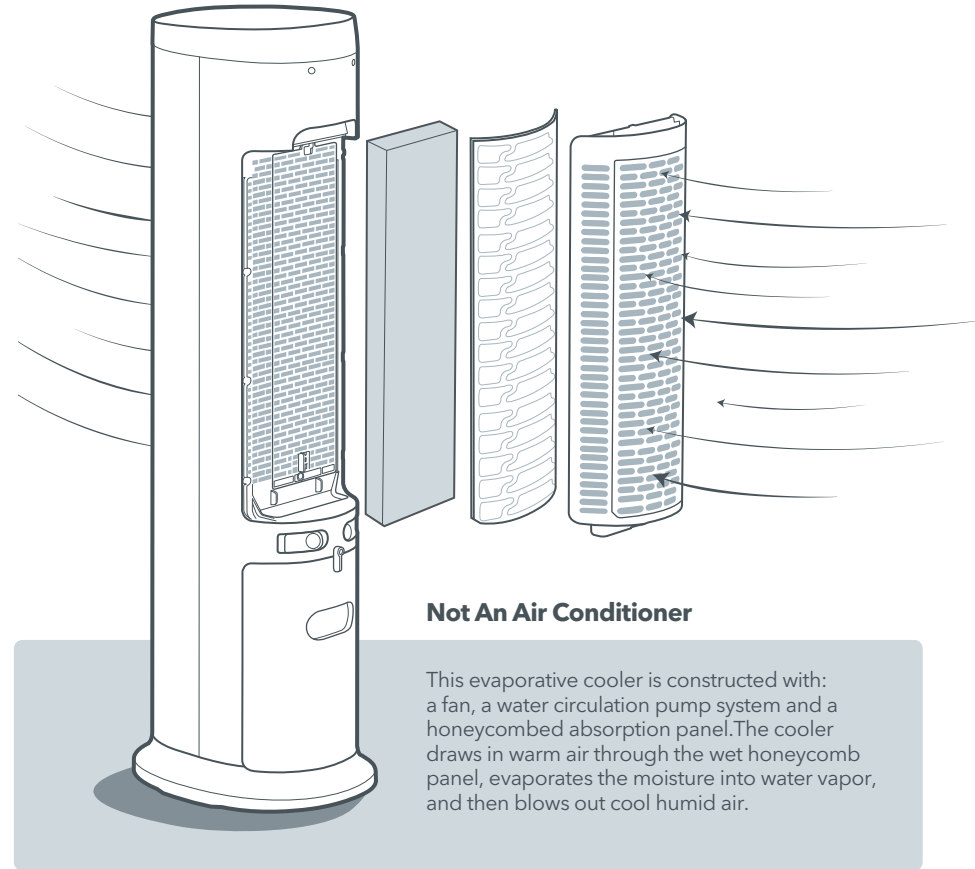


# 03

## USING YOUR AIR COOLER

Cooling and Humidifying Air In Your Living Room

### Getting the Most from Air Cooler



#### Not An Air Conditioner

This evaporative cooler is constructed with: a fan, a water circulation pump system and a honeycombed absorption panel. The cooler draws in warm air through the wet honeycomb panel, evaporates the moisture into water vapor, and then blows out cool humid air.

1

Open window or leave the door ajar for circulation of fresh and dry air.

2

Cool smaller areas such as single rooms, office cubicles and personal spaces.

3

Use with air conditioner to circulate air more efficiently in summer.

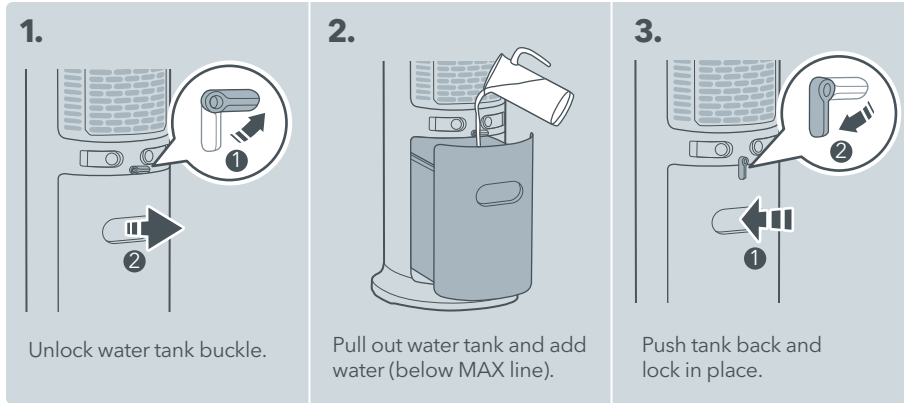
4

Use as a humidifier to add moisture in relatively dry environments.

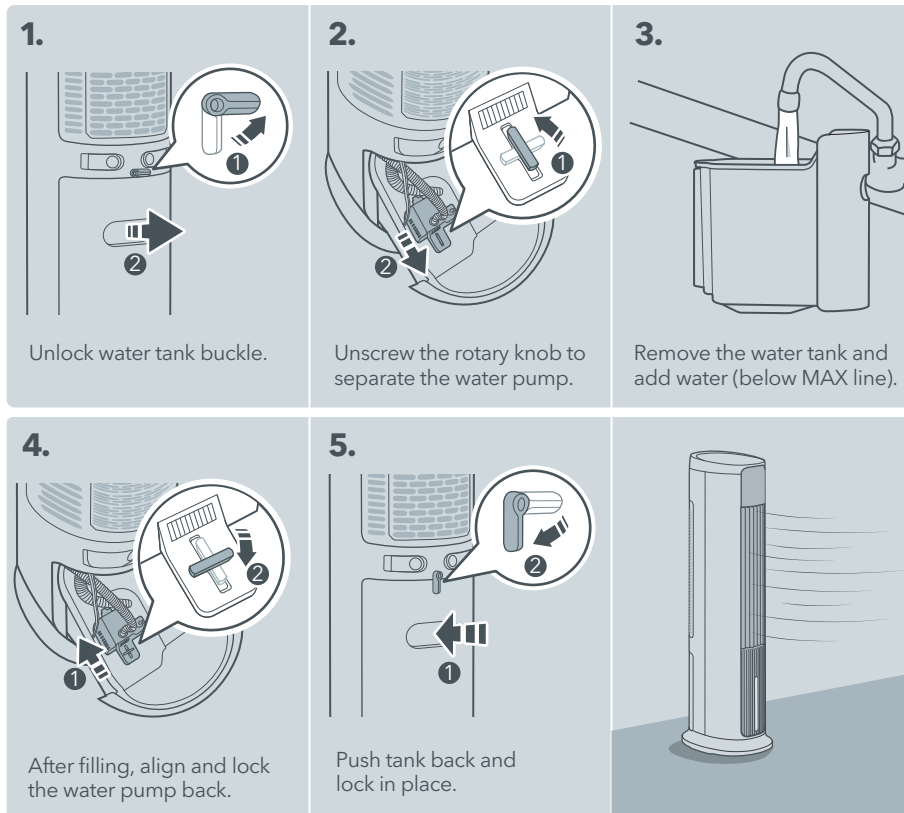
5

Use as a tower fan without turning on Cooling / Humidifying.

## Filling the Water Tank (2 Ways)



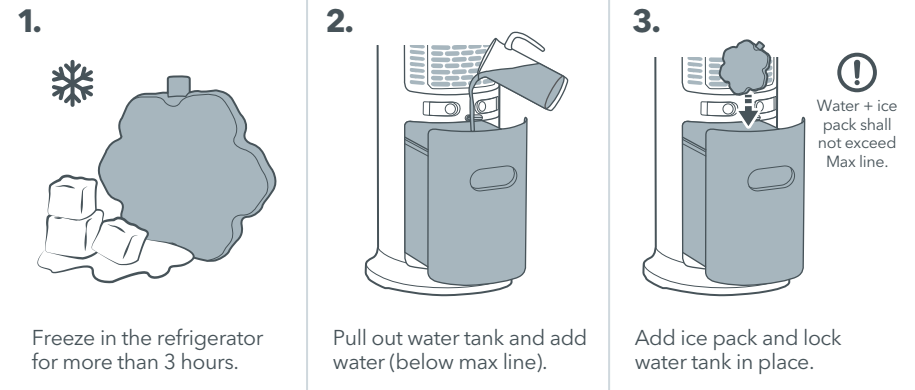
### Way 2



## Using the Ice Pack (Optional)



The Air Cooler includes two ice packs (can be frozen repeatedly and recycled) for added cooling. Use one or both ice packs as per your needs.



## Additional Features



### Memory Function

The fan is designed with power off memory function, it will always remember your last settings (except timer setting) once you turn it on again.



### Low Water Protection

When there is not enough water in the water tank under Cooling / Humidifying mode, Low Water Protection will be activated with a flashing indicator.

To reactivate Humidifying, fill water to the max level and turn on Cooling / Humidifying function again.



### Auto Display OFF

If no operation is done within 1 minute when powered on, the display will turn off automatically.

To turn the display back on, press any button to wake it up.



### 12-Hour Auto Shut Off

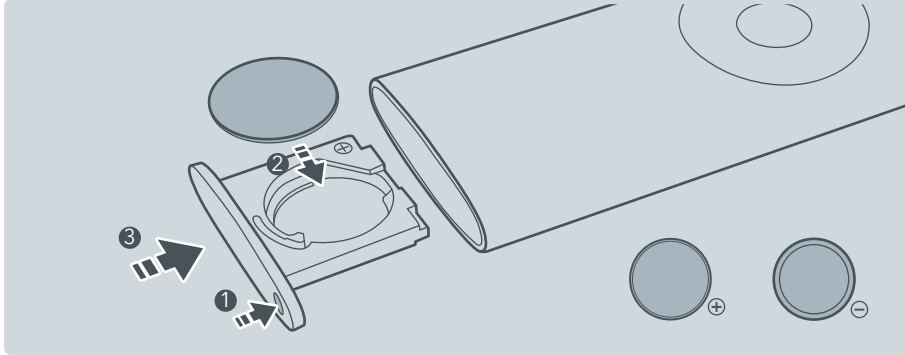
When the fan has been working for 12 hours continuously without any other operation, it will shut off automatically.



## Replacement of Batteries



- Replace with new batteries of the same type when replacement is required.
- When not using the remote control for a long time, please take out the batteries.
- DO NOT attempt to dismantle the batteries.
- DO NOT dispose the batteries in fire, batteries may explode or leak.
- DO NOT use rechargeable batteries.



- 1 Press the locking button to remove the battery holder.
- 2 Replace the battery with the same type (CR2025, 3V), making sure the (+) side facing up.
- 3 Push in the holder until securely locked into place.



**WARNING:**  
**Chemical Burn Hazard. Keep batteries away from children.**

*This product contains a lithium button/coin cell battery. If a new or used lithium button/coin cell battery is swallowed or enters the body, it can cause severe internal burns and can lead to death in as little as 2 hours. Always completely secure the battery compartment. If the battery compartment does not close securely, stop using the product, remove the batteries, and keep it away from children. If you think batteries might have been swallowed or placed inside any part of the body, seek immediate medical attention.*

*The cells shall be disposed of properly, including keeping them away from children. Even used cells may cause injury.*

# 04

## CLEANING AND MAINTENANCE

Cooling and  
Humidifying Air In  
Your Living Room



- Always make sure the Air Cooler is turned off and unplugged before cleaning.
- DO NOT stick any foreign objects or your fingers inside of the unit.
- Never immerse in water or allow water to drip into the motor housing.
- DO NOT clean with abrasive chemicals or flammable cleaning agents.

## Cleaning

### Outer Surface

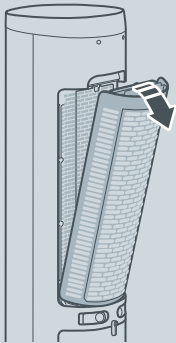
- Wipe with a soft, dry cloth. If necessary, wipe with a damp cloth.
- Completely dry before reconnecting to a power source.

### Dust Filter & Cooling Pad



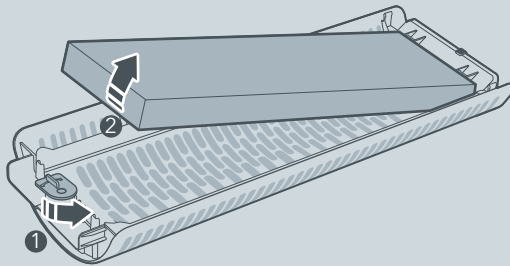
- To prevent from becoming clogged with dust and other buildup, we recommend that it be cleaned at least once a month.
- Completely dry and install back after cleaning.

1.



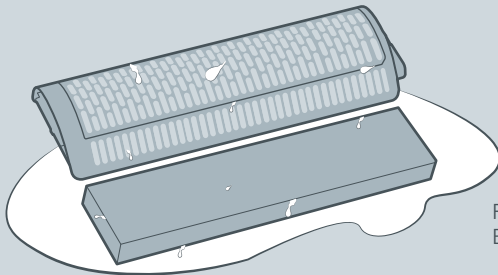
Pull out the dust filter.

2.

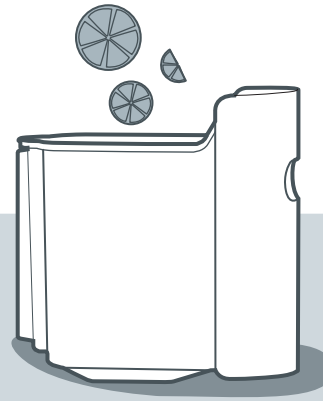


Unlock the bottom buckle and take out the cooling pad.

3.



Rinse the cooling pad.  
Brush and rinse the dust filter.



### Water Tank

**Empty and clean the water tank regularly to ensure hygienic use (remove hard water and mineral deposits).**

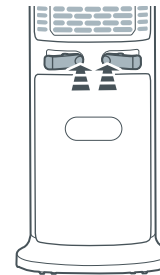
1. Separate the water tank from the water pump (See "Filling the Water Tank").
2. Clean and rinse the tank. For excessive hard water buildup, clean with a diluted vinegar solution and rinse thoroughly.
3. After cleaning, lock the water pump back. Push water tank and lock in place.

## Storage



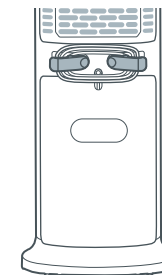
For storage, you may leave the air cooler covered to protect it from dust. Store it in a cool, dry location and wrap the cord around the cord wrap on the unit so that it will not be tripped over or damaged.

1.



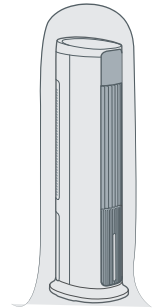
Press out both cord wrap hooks.

2.



Wrap the cord around the hooks.

3.



Leave the fan covered to protect it from dust.

# 05

## TROUBLE- SHOOTING

---

Cooling and  
Humidifying Air In  
Your Living Room

### Excessive noise

It is normal that there is noise during operation. If too loud, please set the fan to lower speed.

### Airflow sound

Normal sound from water pump which will not affect the cooling effect and operation.

### Fan does not operate

- Make sure the fan is connected to a powered electrical outlet.
- Check that the dust filter and water tank are locked in place.

### Not cool enough

- Check the water level in the tank and make sure there is enough water.
- Check that the Cooling / Humidifying function is turned on.
- Wait a few minutes for the cooling pad to be fully saturated with water after turned on.
- Not an air conditioner. The fan is for added cooling and humidifying than normal fan. You can use with air conditioner to circulate air more efficiently.

### Water is coming out of the vents

The cooling pad may be clogged with debris. Rinse the cooling pad and dry completely.

The troubleshooting guide addresses the most common problems. If problems persist, feel free to contact the Customer Support at

[support@taotronics.com](mailto:support@taotronics.com) 

# WARRANTY AND SERVICE

## Thanks for choosing TaoTronics Air Cooler.

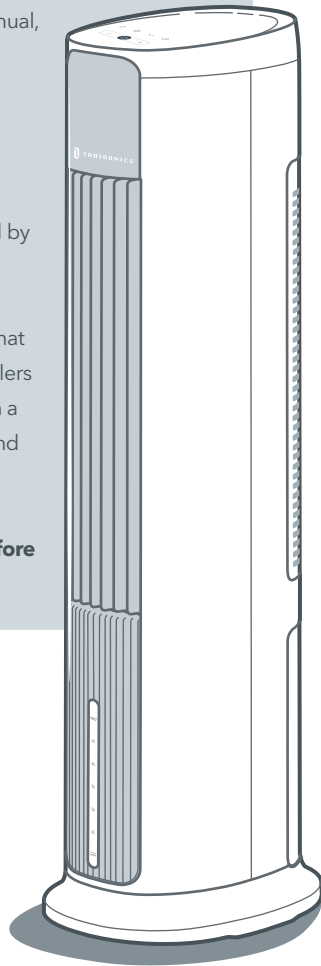
This product is covered with TaoTronics product and labor warranty for 12 months from the date of its original purchase.

### The warranty will not apply in cases of:

- Accident, misuse, or repairs performed by unauthorized personnel.
- Any unit that has been tampered with or used for commercial purpose.
- Normal wear and tear of wearable parts.
- Use of force, damage caused by external influences.
- Damage caused by non-observance of the User Manual, e.g. connection to an unsuitable mains supply or non-compliance with the instructions.
- Partially or completely dismantled appliances.
- Defects caused by or resulting from damages from shipping or from repairs, service, or alteration to the product or any of its parts that have been performed by a repair person not authorized by TaoTronics.

We can only provide after sales service for products that are sold by TaoTronics or TaoTronics authorized retailers and distributors. If you have purchased your unit from a different place, please contact your seller for return and warranty issues.

✧ **Please have your invoice and order ID ready before contacting Customer Support.**



support@taotronics.com



www.taotronics.com



Manufacturer: Shenzhen NearbyExpress Technology Development Co.,Ltd.  
Address: Floor 7, Building E, Galaxy World Phase II, Shenzhen, China



尺寸：140\*210mm

装订成册

材质：封面120克书纸 内页80克书纸