

尺寸：160mm*110mm

骑马钉

封面128g铜版纸，内页80g书纸



E-mail:

support@taotronics.com

MANUFACTURER

Manufacturer: Shenzhen NearbyExpress Technology Development Co.,Ltd.

Address: Floor 7, Building E, Galaxy World Phase II, Shenzhen, China



Intertek
4003575
CONFORMS TO
UL STD. 1278

MADE IN CHINA

Rev_1.1_EN

Model: TT-HE005
TaoTronics Oil-Filled Radiator
User Guide

Contents

01	IMPORTANT SAFETY INSTRUCTIONS
06	Package Contents
07	Product Diagram
08	Assembly Instructions
10	Operations and Functions
15	Battery Replacement
16	Specifications
16	Cleaning and Maintenance
18	Troubleshooting
19	Warranty and Service



Thanks for choosing TaoTronics Oil-Filled Radiator. Please read this User Guide thoroughly before use and retain it for future reference.

IMPORTANT SAFETY INSTRUCTIONS

READ AND FOLLOW ALL SAFETY INFORMATION AND INSTRUCTIONS.KEEP FOR FUTURE REFERENCE.

FOR HOUSEHOLD USE ONLY

When using electrical appliances, basic precautions should always be followed to reduce the risk of fire, electric shock, and injury to persons, including the following:

1. Read all instructions before using this heater.
2. Surface of this heater will become hot during use. To avoid burns, do not touch hot surfaces with bare hands. Use handles when moving the unit.
3. High temperature. Keep combustible materials, such as furniture, pillows, bedding, papers, clothes and curtains at least 3 feet (0.9 meters) from the front and top of the radiator and keep them away from the sides and rear.

4. This appliance is not intended for use by persons (including children) with reduced physical, sensory or mental capabilities, or lack of experience and knowledge, unless they have been given supervision or instruction concerning the use of the appliance by person responsible for their safety.
5. Do not allow to be used as a toy. Close attention is necessary when used by or near children. Children should be supervised to ensure that they do not play with the machine or remote control.
6. Always unplug the heater when not in use.
7. Do not operate any heater with a damaged cord or plug or after the heater malfunctions, has been dropped or damaged in any manner. Discard heater, or return the heater to an authorized service facility for examination, electrical or mechanical adjustment or repair.
8. Do not use outdoors or on wet surfaces.
9. Do not handle any part of the plug or machine with wet hands.
10. Suitable for dry locations ONLY. This heater is not intended for use in bathrooms, laundry areas and similar indoor locations. Never place the heater where it may fall into a bathtub or other water container. Do not use or store where it may get wet or in the immediate surroundings of a bath, a shower, or a swimming pool.
11. Do not run cord under carpeting. Do not cover cord with throw rugs, runners or the like. Do not route cord under furniture or appliances. Arrange cord away from traffic area and where it will not be tripped over.
12. To disconnect the heater, turn it off first, then remove the plug from the outlet.

13. Connect to properly grounded outlets only.
14. Do not insert or allow foreign objects to enter any ventilation or exhaust opening as this may cause electric shock, fire or damage to the heater.
15. To prevent a possible fire, do not use with any opening or exhaust blocked, and keep free of dust, lint, hair, and anything that may reduce airflow. Do not put any object into the inlet grill or the exhaust opening as this may cause an electric shock or fire, or damage the appliance.
16. A heater has hot or arcing or sparking parts inside. Do not use it in areas where gasoline, paint or flammable liquids are used or stored.
17. Use this heater only as described in this User Guide. Any other use not recommended by the manufacturer may cause fire, electric shock, injury to persons or other damage to property.
18. To prevent overload and blown fuses, be sure that no other appliance is plugged into the same outlet (receptacle) or into another outlet (receptacle) wired into the same circuit.
19. If there is a loose fit between the plug and the socket or the plug becomes very hot, the socket may need to be replaced. Check with a qualified electrician to replace the socket.
20. It is normal for the plug and cord to feel warm to the touch. A plug or cord which becomes hot to the touch or becomes distorted in shape may be a result of a worn electrical outlet. Worn outlets or receptacles should be replaced prior to further use of the heater. Plugging heater into a worn outlet / receptacle may result in overheating of the power cord or fire.

21. The output of this heater may vary and its temperature may become intense enough to burn exposed skin. Use of this heater is not recommended for persons with reduced sensitivity to heat or an inability to react to avoid burns.
22. Ensure the heater is on a stable, secure surface to eliminate the potential of tipping it over.
23. Always plug heaters directly into a wall outlet / receptacle. Never use with an extension cord or relocatable power tap (outlet / power strip).
24. Be sure that the plug is fully inserted into appropriate receptacle. Please remember that receptacles also deteriorate due to aging and continuous use: check periodically for signs of overheating or deformations evidenced by the plug. Do not use the receptacle and CALL your electrician.
25. Check that neither the appliance nor the power cable has been damaged in any way during transportation.
26. Make sure that no pieces of polystyrene or other packaging material have been left between elements of the appliance. It may be necessary to pass over the appliance with a vacuum cleaner.
27. Do not attempt to modify or repair the product by yourself. Doing so could void the warranty and cause damage or personal injury. Only a repair technician may disassemble or repair this product.
28. Choking hazard - This remote control unit contains a small battery. Keep the remote control away from children and do not swallow the battery. If the battery is swallowed seek medical advice at once.

- 29.If the machine is not working as it should, has received a sharp blow, has been dropped, damaged, left outdoors, or dropped into water, do not use and contact the Customer Support.
- 30.Before cleaning, or storage, or when not in use, always turn the heater OFF and unplug it from the electrical outlet and allow to cool.
- 31.IMPORTANT - This appliance has a polarized plug (one blade is wider than the other). To reduce the risk of electric shock, this plug is intended to fit in a polarized outlet only one way. If the plug does not fit fully in the outlet, reverse the plug. If it still does not fit, contact a qualified electrician. Do not attempt to rig this safety feature.

DANGER-High temperatures may be generated under certain abnormal condition.

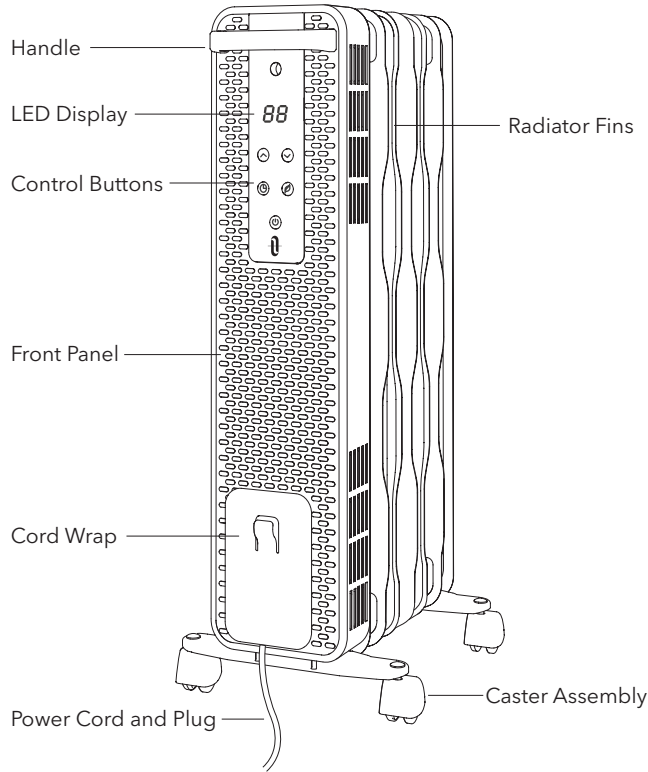
Do not partially or fully cover or obstruct the front of this heater.

READ AND SAVE THESE INSTRUCTIONS

Package Contents

- ① 1 x TaoTronics Oil-Filled Radiator Body (TT-HE005)
- ② 1 x Remote Control
- ③ 1 x CR2025 Type Lithium Battery (installed in Remote Control)
- ④ 1 x U-Shaped Bolt
- ⑤ 2 x Caster Mounting Plates
- ⑥ 4 x Wing Nuts
- ⑦ 1 x Thank You Card
- ⑧ 1 x User Guide

Product Diagram



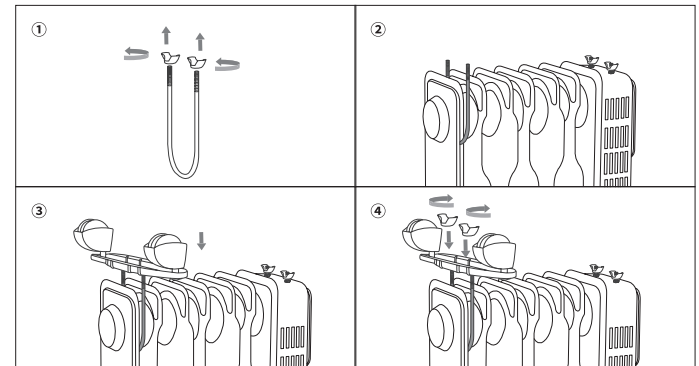
Assembly Instructions

The heater is packaged with the casters unattached. You shall attach them before operating the heater.

Important: Do not plug in and operate the heater if the casters are not assembled correctly in place. The heater must always be used in an upright position (casters at bottom, controls on top).

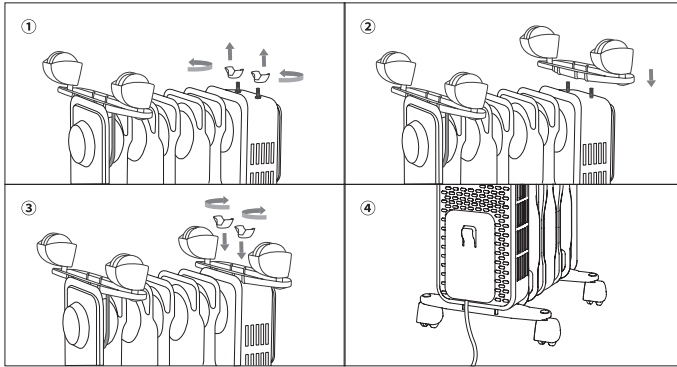
- Carefully take out the radiator body from the box and remove all packaging materials.
- Take out the caster assemblies and turn the radiator body upside down on a scratch-free location. Make sure it is stable and will not fall.
- Rear Casters: Unscrew the wing nuts from the included U-shaped bolt, attach the U-bolt to the U-facing flange between the last two fins. Insert the threaded ends of the U-bolt into the mounting holes on the plate. Screw the wing nuts back to the U-bolt and tighten properly.

Note: The rear casters must be mounted between the last two fins.



4. Front Casters: Put the other caster mounting plate on the front cover against screws. Screw the wing nuts back to the U-bolt and tighten properly.

Note: Do not over tighten, which may cause the damage of radiator flange.



5. Turn the heater right-side up after the casters are installed securely. Make sure the casters installed can move freely.

6. Place the heater on a firm, level surface free from obstructions, and at least 3ft. (0.9m) away from any wall or combustible material. Plug into an appropriate voltage AC outlet. Your heater is ready for use now.

Operations and Functions

LED Display ————— 88

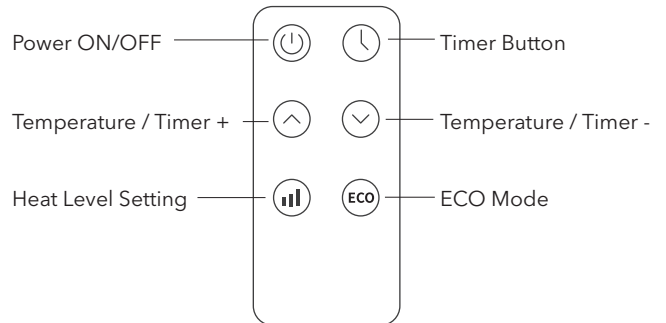
Temperature / Timer + — (▲) (▼) — Temperature / Timer -

Timer Button — (🕒) (🌿) — ECO Mode

(🔌) — Power ON/OFF/
Heat Level Setting

Remote Control

Note: For added convenience, the same control buttons can be found on the remote control.



Operations and Functions

Plug the heater into an appropriate voltage AC outlet, the unit will enter standby mode with a beep and power indicator on red.


88

LED Display

- Shows the setting temperature (40-95°F), heat level (H3, H2, H1) or Auto Start/ Stop time (00-24H) while setting.

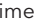
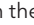


Power ON

- Press  once to turn the heater ON: Power indicator turns green & highest heat level "H3" flashes on LED display, then setting temperature is displayed after 3 second.

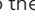



Power OFF

- Via Control Panel: Repeatedly press  to OFF, or press and hold it for 2 seconds.
- Via Remote Control: Press  once again.





Heat Level Setting

- Via Control Panel: When the unit is on, repeatedly press  to cycle through H3 -> H2 -> H1 -> OFF -> H3 with setting temperature displayed after 3 second.

- Via Remote Control: When the unit is on, press  to adjust the heat level (H3, H2, H1)







Temperature Adjustment

- When the unit is on, press the  or  Button to adjust the temperature from 40-95°F in 1°F increments.
- Press and hold the buttons to quickly skip to the desired temperature. The set temperature will flash three times to confirm your setting.
- When the setting temperature is reached, the heater may keep working for additional minutes to maintain the setting temperature.
- Default setting temperature: 86°F



Timer Setting

- Auto Stop Timer: When the unit is ON, press the Timer Button, then press the  or  Button to set the number of hours (00-24H) you want the unit to run before it switches off. When time is up, the unit will automatically stop running.
- Auto Start Timer: When the unit is OFF (with the heater plugged into an electrical outlet), press the Timer Button, then press the  or  Button to set the number of hours (00-24H) you want the unit to start running automatically. When time is up, the unit will automatically start running.

- Press and hold the ☉ or ☾ Button to quickly skip to the desired time. The set time will flash three times to confirm your setting.
- To cancel Timer setting, adjust the timer setting to 00 or turn off the unit.



ECO Mode

- When the unit is on, press the ECO Button to run under ECO mode.
- In ECO mode, the heater will run in the highest heat level (H3) for 10 minutes and then in the lowest level (H1) for 30 minutes.
- Default setting temperature: 77°F
- Press the ECO Button again to cancel the ECO mode, the heater will restore to the original setting state.
- In ECO mode, press the Power Button on the control panel or Heat Level Button on the remote control once, the heater will exit ECO mode and restore to the highest heat level (H3).
- When Auto Start Timer is set, the ECO Button is ineffective.

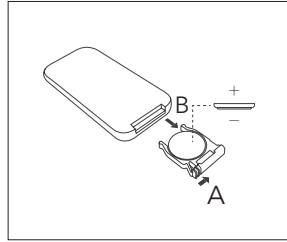
Other Safety Features

Auto Shut Off

- When the parts become excessively hot, the heater will shut off automatically to avoid overheating. Unplug it from the electrical outlet. Allow it to cool down, then plug it back into the outlet.
- When the heater is tipped over, the heater will shut off automatically. Place it on a flat, level and stable surface.

Battery Replacement

1. Remove the battery holder by pressing the locking tab A with your thumb and pulling it out as per arrow B.



2. Properly dispose the old battery.

3. Replace with a new CR2025 Type Lithium Battery, making sure the (+) side facing up.

4. Gently push in the holder until securely locked into place.

CAUTION:

- Danger of explosion if battery is incorrectly replaced. Replace only with the same or equivalent type.
- Do not attempt to dismantle or charge the batteries.
- Do not dispose the batteries in fire, batteries may explode or leak.

Specifications

Model	TT-HE005
Input	120V~ 60Hz
Rated Power	1500W
Remote Control Battery	CR2025, 3V

Cleaning and Maintenance

It is recommended that the heater be cleaned at least one time during the operating season and before off-season storage in order to provide the optimum level of performance.

Always disconnect the appliance from the mains by switching it off and removing the plug from the power outlet before cleaning.

- Turn the heater "OFF", unplug it and wait for the heater to cool down.
- Use only a soft cloth to gently wipe the outer surfaces of the heater clean.
- Do not use any cleaning agents or detergents.
- Never immerse the heater in water and never allow water to drip into the motor housing. Be sure not to wet the Heating Element and the switches.

- For storage, you may leave the heater covered to protect it from dust. Store it in a cool, dry location and wrap the cord around the cord wrap on the unit so that it will not be tripped over or damaged.

Caution:

- Do not allow water to run into the interior of the heater as this could result in a fire or electric shock hazard.
- Any other servicing should be performed by an authorized service representative.

Troubleshooting

The following troubleshooting guide addresses the most common problems. If problems persist, contact the Customer Support at support@TaoTronics.com.

Problem	Possible Causes	Solution
Heater does not start	Power cord is not properly plugged in.	Connect the plug to a powered electrical outlet.
	Overheat Protection has been activated.	Turn the heater OFF, unplug it and allow it to cool. Check and remove any objects on or adjacent to the heater. Wait 5-10 minutes before plugging the unit back in.
	No power is passing through the unit.	Ensure that your circuit breaker or fuse is working properly. Ensure your heater is placed on a flat and even surface.
	Setting temperature is lower than the room temperature.	Make sure the thermostat is set at a higher temperature than the room temperature.

Problem	Possible Causes	Solution
The heater suddenly stops during heating	The temperature exceeds the threshold of the thermal cut-off.	Turn off the unit and unplug it from the power outlet. Allow it to cool, and then plug it into the electrical outlet again.
	The heater is tipped over.	Place it on a flat, level and stable surface.

Warranty and Service

This product is covered with TaoTronics product and labor warranty for 12 months from the date of its original purchase. If any problems occur, please contact the TaoTronics Customer Care Centre via the contact information listed in this User Guide.

We can only provide after sales service for products that are sold by TaoTronics or TaoTronics authorized retailers and distributors. If you have purchased your unit from a different place, please contact your seller for return and warranty issues.