

尺寸：140mm\*210mm

骑马钉

封面封底128g铜版纸，内  
页80g书纸。

蓝色CMYK：C=80；M=12  
；Y=10；K=0



# AIR PURIFIER

Refreshing Air Inside Your Living Room



User Manual

**TAOTRONICS**

**Questions or Concerns?**

[support@taotronics.com](mailto:support@taotronics.com)

# THANK YOU

FOR BEING OUR CUSTOMER



Your purchase is truly appreciated!  
We hope you are over-the-moon with our product!

# content

1 IMPORTANT SAFETY INSTRUCTIONS	01
2 BEFORE USE	05
3 USING YOUR AIR PURIFIER	09
4 CLEANING & MAINTENANCE	16
5 FAQ	20



1



**IMPORTANT  
SAFETY  
INSTRUCTIONS**

# IMPORTANT SAFETY INSTRUCTIONS

## BEFORE USING THIS APPLIANCE READ ALL INSTRUCTIONS AND CAUTIONARY MARKINGS IN YOUR USER MANUAL AND ON THE APPLIANCE

When using an electrical appliance, basic precautions should always be followed, including the following:

### INTENDED USE



This appliance is not intended for use by persons (including children) with reduced physical, sensory or mental capabilities, or lack of experience and knowledge, unless they have been given supervision or instruction concerning the use of the appliance by person responsible for their safety.

Close supervision is necessary when any appliance is used by or near children. Children should be supervised to ensure that they do not play with the appliance. Cleaning and user maintenance shall not be done by children unless they are older than 8 and supervised.

Use the appliance only for intended household purposes as described in this User Manual. Any other use is not recommended that may cause fire, electric shock, or injury to persons.



**DO NOT** use the filter as fuel or for similar purposes.

### ELECTRICITY SAFETY



**IMPORTANT** - This appliance has a polarized plug (one blade is wider than the other). To reduce the risk of electric shock, this plug is intended to fit in a polarized outlet only one way. If the plug does not fit fully in the outlet, reverse the plug. If it still does not fit, contact a qualified electrician. Do not attempt to rig this safety feature.

To avoid fire or shock hazard, plug the appliance directly into a right AC electrical outlet. This appliance must be provided with correct voltage via a professionally installed power socket. Make sure the voltage indicated on the label of the appliance is the same as your local supply.

To avoid fire hazard, **NEVER** put the cord under rugs, near heat registers, radiator, stoves, or heaters.

Keep the cord out of heavy traffic areas and where it will not be tripped over.



If the supply cord is damaged, it must be replaced by the manufacturer, its service agent or similarly qualified persons in order to avoid a hazard. **DO NOT** operate the appliance if the plug, the main cord or the appliance itself is damaged. Always make sure that the plug is inserted properly into a wall outlet.

**DO NOT** plug in the appliance or operate the control panel with wet hands.

**DO NOT** immerse air purifier in water or liquids. Doing so may result in damage to the appliance, electric shock, or fire.

**DO NOT** use an extension cord with this unit.

### RELATED TO USE



Always unplug the air purifier before moving it, opening the grille, changing filters, cleaning or whenever the air purifier is not in use.

Always make sure to place the air purifier on a flat, level surface before operation.

**NEVER** drop or insert any objects into any openings.

Be sure to pull by the plug, not the cord.



**DO NOT** attempt to repair or adjust any electrical or mechanical functions on this unit. Doing so will void your warranty. The inside of the unit contains no user serviceable parts. All servicing should be performed by qualified personnel only.

**DO NOT** use the air purifier in an enclosed space where flammable, combustible or explosive gases are present.

**DO NOT** sit, stand or place heavy objects on the appliance.

### PLACING THE UNIT



Always place and use the appliance on a dry, stable, level, and horizontal surface. Make sure the appliance cannot be easily knocked over by a person or object.



**DO NOT** place the unit directly on or against soft furnishings, such as bedding or curtains, as this could cause the unit to block the air inlet or outlet.

**DO NOT** place the appliance directly below an air conditioner to prevent condensation from dripping onto the appliance.

**DO NOT** use the air purifier in wet or humid environments.

## REGULAR CHECK

Have your Air Purifier checked regularly for any sign of malfunction!

Check if

- Plug, cord or appliance is damaged.
- Excessive noise, unpleasant odor or abnormal heat.

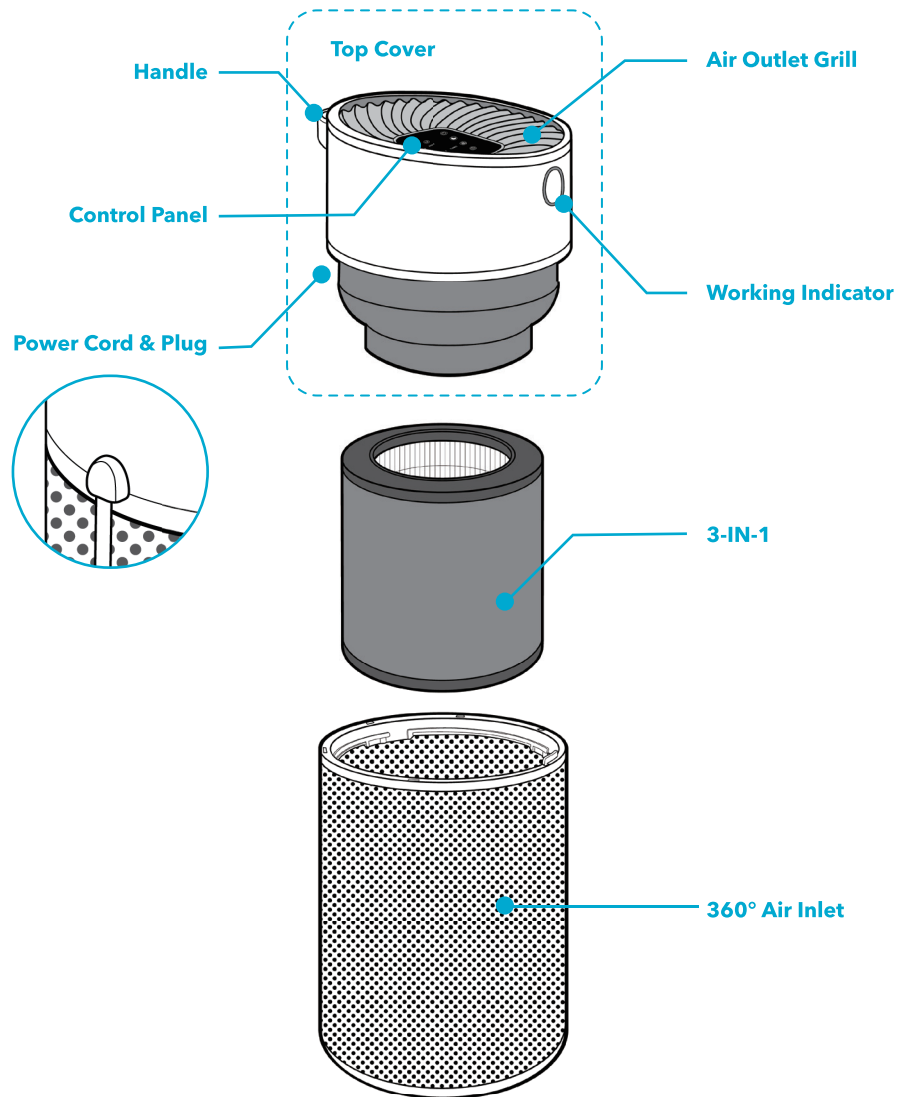
Stop using, check **FAQ** and contact **TaoTronics Support Team**.

**FOR HOUSEHOLD USE ONLY**  
**READ AND SAVE THESE**  
**INSTRUCTIONS**

**BEFORE**  
**USE**

**2**

# Knowing Your Air Purifier



## Specifications

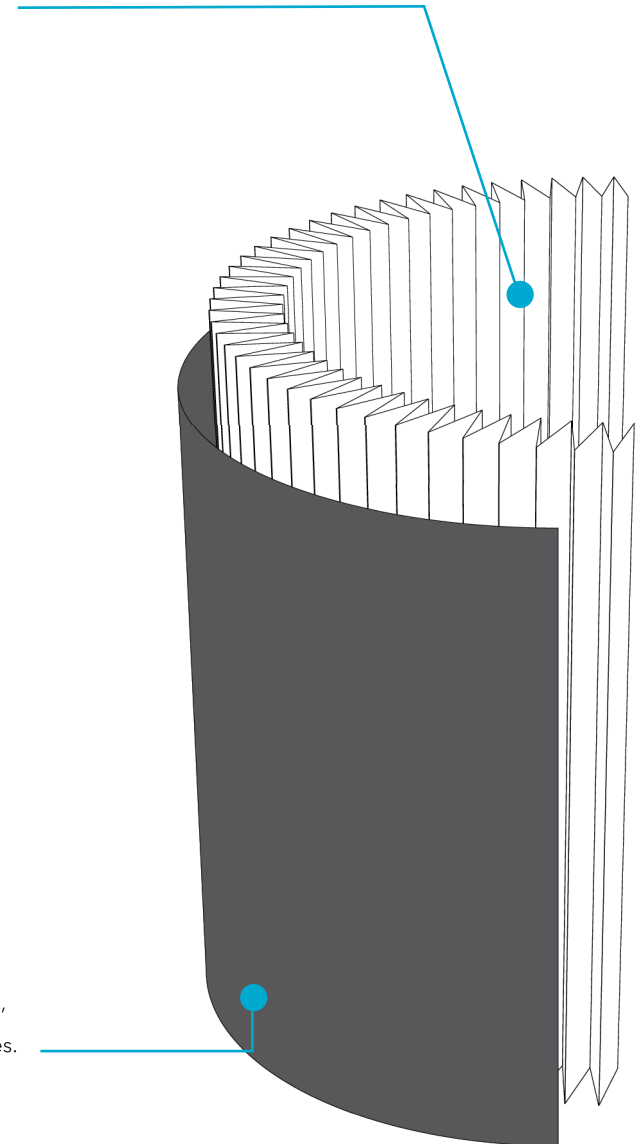
Voltage	US / CA: 120V~60Hz UK / AU: 220-240V~50Hz	Rated Power	US / CA: 60W UK / AU: 52W
---------	--	-------------	------------------------------

## HEPA Filter

Captures and reduces up to 99.97 % of airborne particles, pet dander, pollen and other allergens.

## Pre-Filter with Active Carbon

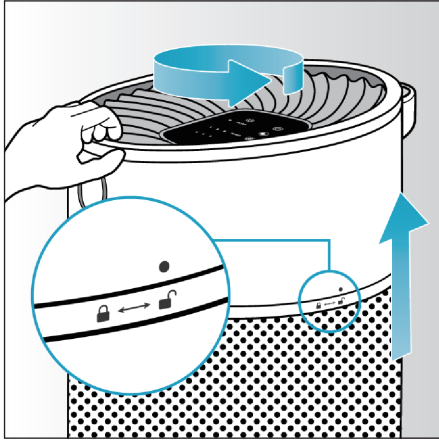
Captures large particles, removes household odors and noxious gases.



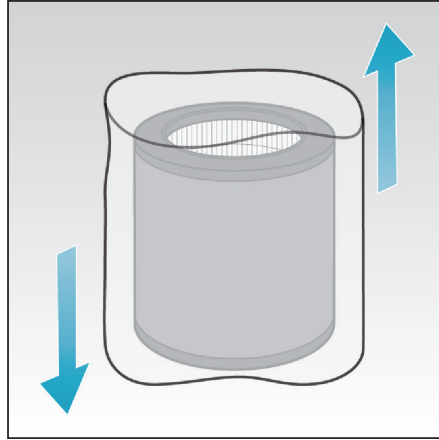
It is recommended to replace the filter every 3 months (depending on the frequency of use and air quality).



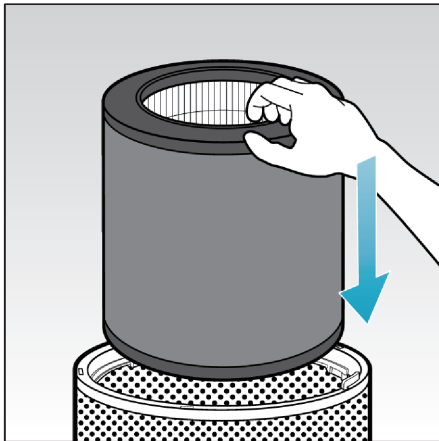
## Setting Up Filter



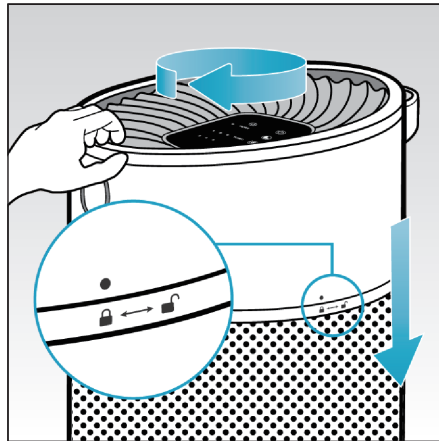
1. Twist the top cover to **UNLOCK** to remove.



2. Take out filter, remove from its plastic packaging.



3. Place the filter back.

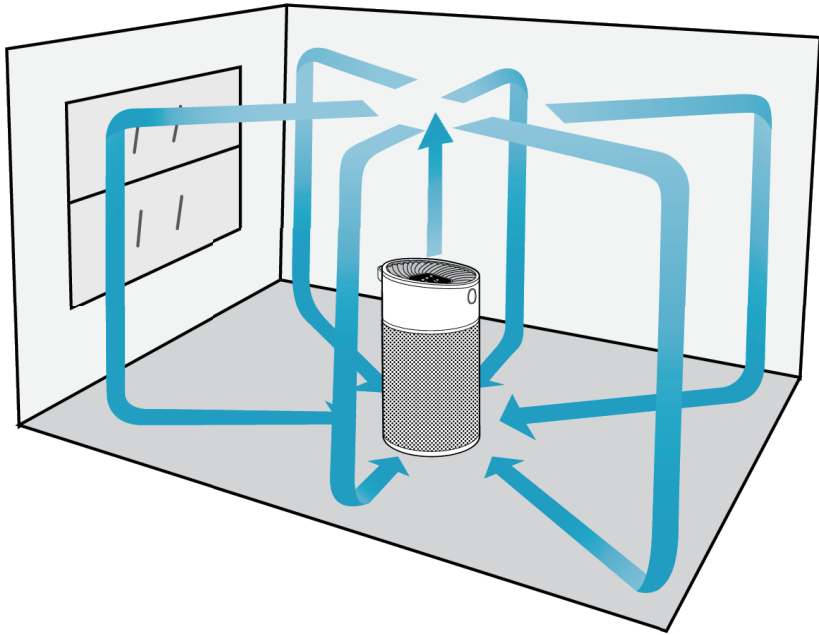


4. Install the top cover back, twist to **LOCK** to lock.

# 3

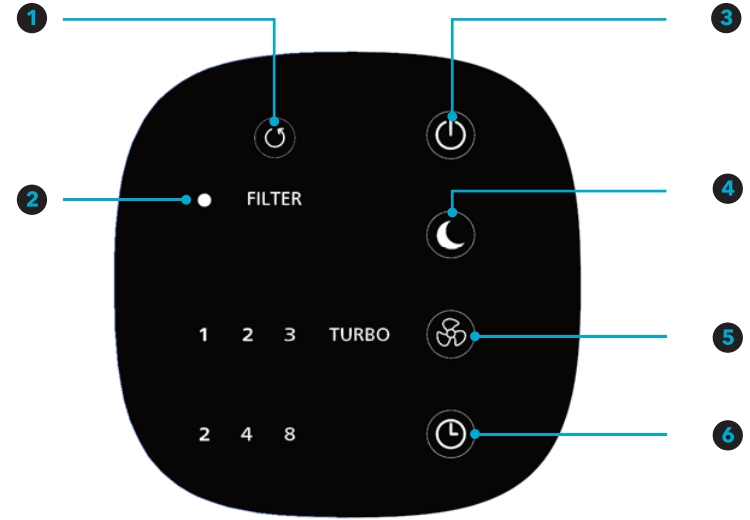
**USING  
YOUR  
AIR PURIFIER**

## Getting the Most from Air Purifier



1. Leave enough circulation space (15 in / 38 cm) around the unit.
2. Close your doors and windows.
3. Run at maximum speed for at least 30 minutes when turned on.
4. Open windows regularly for ventilation.
5. Place and use on a stable and level surface. Make sure it cannot be easily knocked over by a person or object.

## Control and Functions



- |  |  |   |
|--|--|---|
| <p><b>1 Filter Reset</b><br/>Tap to reset filter after replacing</p> | <p><b>2 Filter Reset Indicator</b><br/>Flashes when the filter shall be replaced</p> | <p><b>3 Power ON/OFF</b><br/>Turn on/Standby mode</p> |
| <p><b>4 Sleep Mode</b><br/>Fan speed 1 with all indicators OFF</p>   | <p><b>5 Fan Speed</b><br/>1 / 2 / 3 / TURBO</p>                                      | <p><b>6 Auto OFF Timer</b><br/>2 / 4 / 8h</p>         |

## **Power ON/OFF**

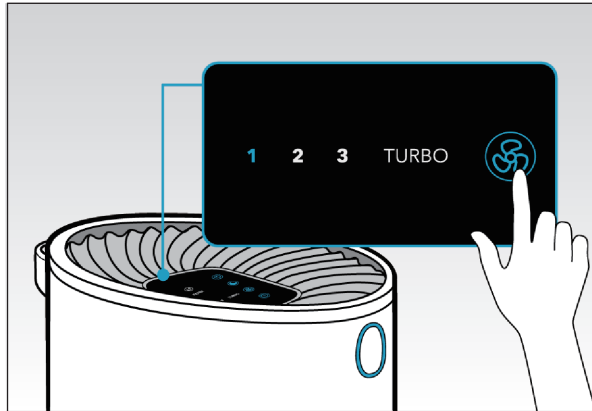


1. Plug into an appropriate electrical outlet.
2. Tap Power ON/OFF to turn on the air purifier. Tap it again to turn off after using.

## **FAN SPEED CONTROL**



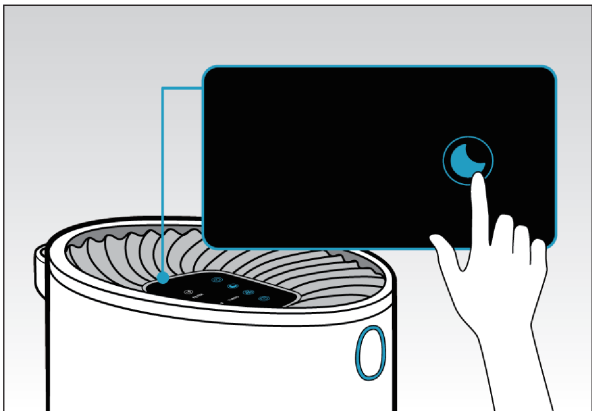
When the unit is on, tap **Fan Speed** repeatedly to cycle through the adjustable fan speeds: 1 / 2 / 3 / TURBO(Max).



## **SLEEP MODE**



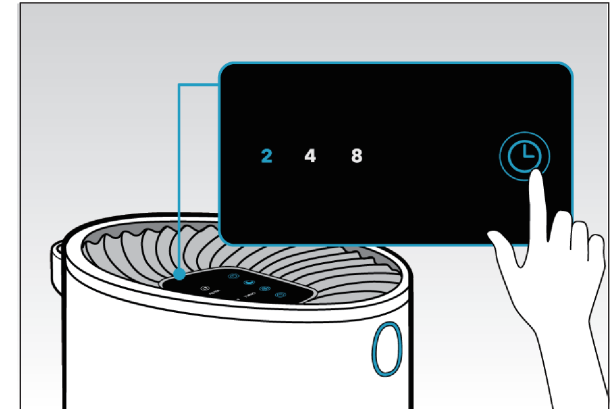
1. Tap **Sleep Mode** to activate Sleep Mode.
2. When Sleep Mode is enabled, all indicators will turn off. The air purifier will run quietly under fan speed 1, making it ideal for use while sleeping.



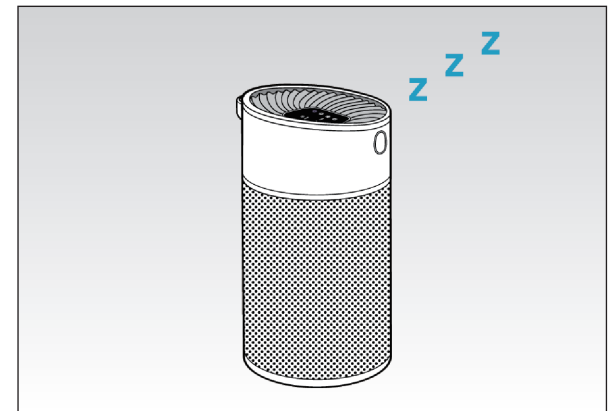
## **AUTO OFF TIMER**



1. When the unit is on, tap **Auto OFF Timer** repeatedly to cycle through 2h -> 4h -> 8h -> Timer OFF. To cancel, tap to Timer OFF.



2. When time reaches zero, the air purifier will go into standby mode.

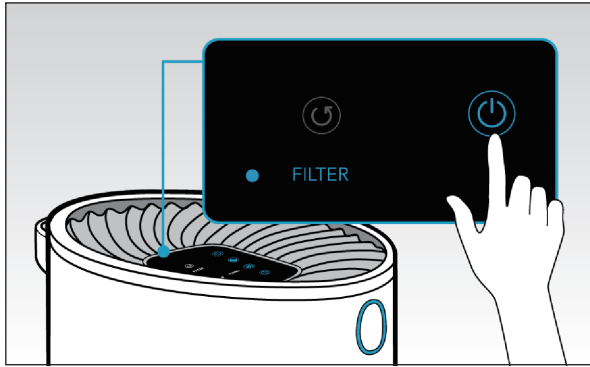


## REPLACE THE FILTER

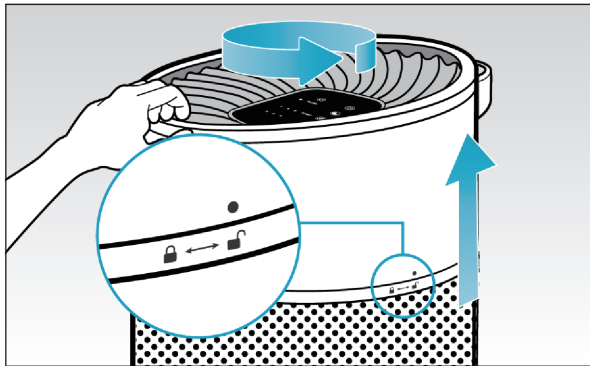
The appliance must be disconnected from the supply mains. It is recommended to replace the filter every 3 months (depending on the frequency of use and air quality).

1. **Filter Reset Indicator** will flash as a reminder to replace the filter.

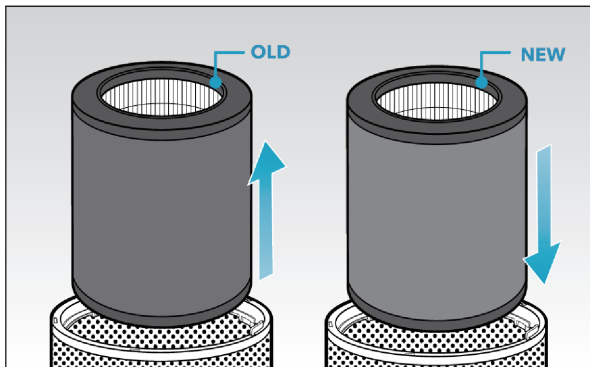
**Turn off** and unplug the air purifier.



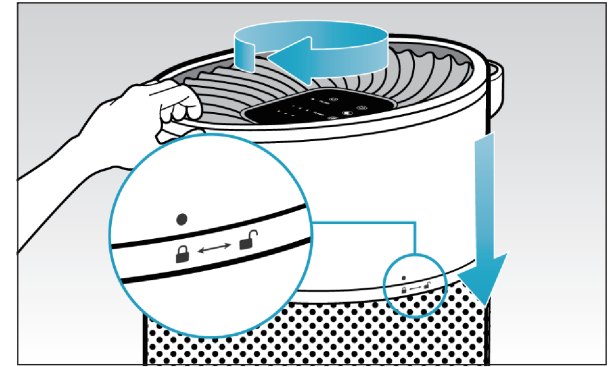
2. Twist the top cover to **UNLOCK** to remove the top cover.



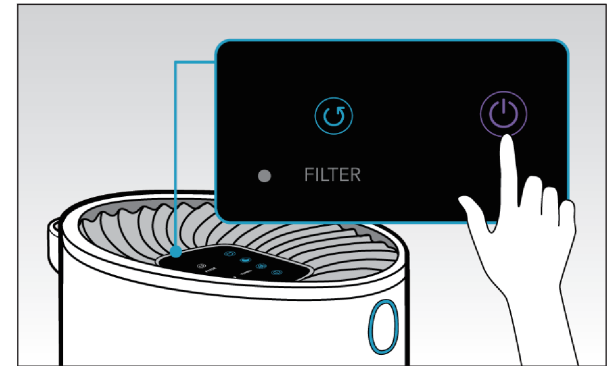
3. Remove the old filter, replace with a new one.



4. Install and lock the top cover to place.



5. Plug in and tap **Power ON/OFF** to turn on.  
Tap **Filter Reset** to reset the filter.



# 4

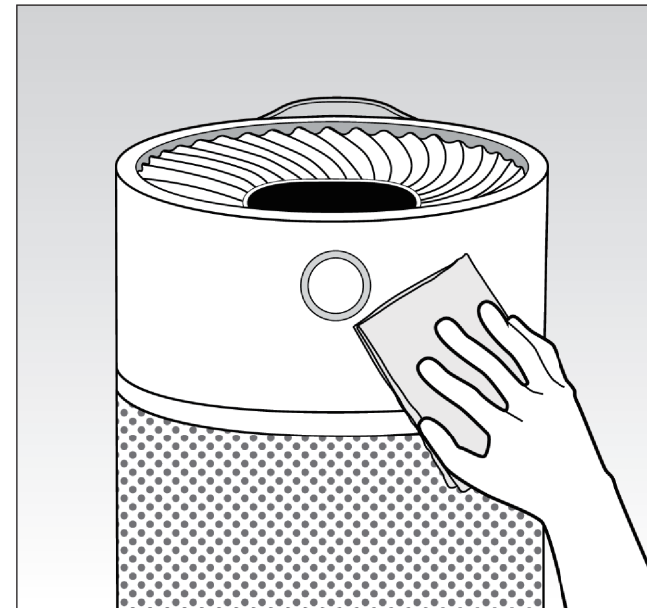


## NOTE:

1. Always make sure the air purifier is turned off and unplugged before cleaning.
2. DO NOT stick any foreign objects or your fingers inside of the unit.
3. Never immerse in water or allow water to drip into the motor housing.
4. DO NOT clean with abrasive chemicals or flammable cleaning agents.

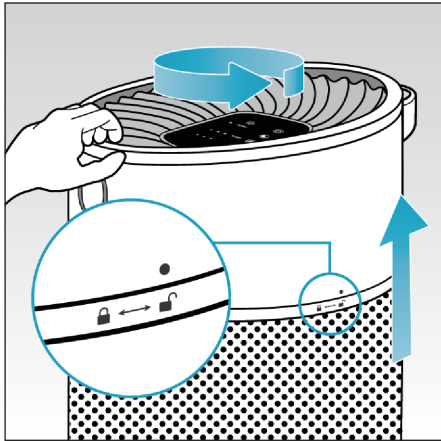
## CLEANNING & MAINTENANCE

### Outer Surface



Wipe with a soft, dry cloth. If necessary, wipe with a damp cloth, then immediately dry.

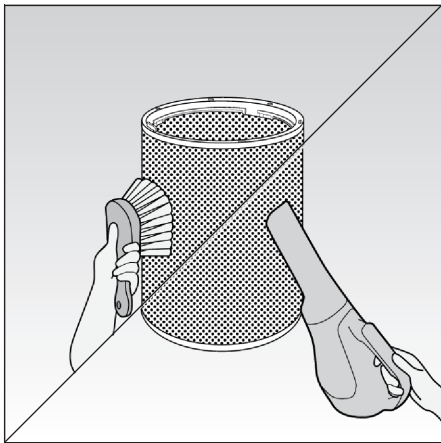
## Air Inlet & Outlet Grill



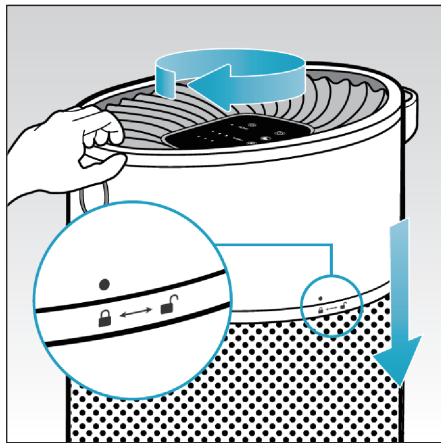
1.Unlock, remove top cover and filter.



2.Air Outlet: Vacuum up dust with a vacuum cleaner or wipe it with a cloth.



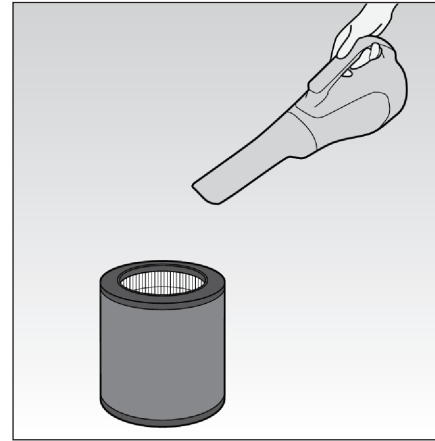
3.Air Inlet: Vacuum up dust or clean with a soft brush to remove any debris from the mesh.



4.Install all parts back and lock to place.

## Pre-Filter

Clean the pre-filter when particulate matter are visible or excessive noises are heard.



1.Clean with a vacuum cleaner once every two weeks. Do not closely attach to the filter.



2.Do not wash.

# 5

# FAQ

## Trouble Shooting

The following troubleshooting guide addresses the most common problems. If problems persist, feel free to contact the Customer Support at [support@taotronics.com](mailto:support@taotronics.com).

### Related to Filter

**Q1:Where can I purchase a new filter?**

**A1:**Purchase from TaoTronics Website: [www.taotronics.com](http://www.taotronics.com).

**Q2:When to replace the filter?**

**A2:**It is recommended to replace the filter every 3 month (depending on the frequency of use and air quality).

**Q3:What pollutants can be filtered?**

**A3:**Learn more about the filter (see **Page 07**).

### Related to Use

**Q4:What is the optimum application area for this air purifier? Is it applicable to multi-rooms or rooms on different floors?**

**A4:**Recommended room size: 10-30 m<sup>2</sup> / 108-323 ft<sup>2</sup>  
Multi-rooms: Keep the door open for enough circulation.  
Rooms on different floors: not recommended.

**Q5:Does this air purifier come with Auto Display OFF function?**

**A5:**Auto Display OFF is available under Sleep Mode (see **Using Your Air Purifier**).

**Q6:Does this air purifier come with memory function?**

**A6:**The air purifier is designed with Memory Function. If power is not disconnected, the unit will always work under Turbo mode for 2 seconds then return to your last setting (fan speed) once you turn it on again.

**Q7:Can I use this air purifier with a humidifier or smart plug?**

**A7:**You can use the unit with a humidifier. To avoid any damage to the unit, keep a distance of at least 3m/12ft. You can also use with an intelligent plug for power on/off control only (unavailable for function control).

## Related to Use

### **Q8:Insufficient airflow.**

- A8:**1.Fan speed is on low setting. Press Fan Speed Button to adjust the fan speed.  
2.Not enough free space around the unit to ensure ventilation. Leave 15 in / 38 cm of clearance for proper air flow.  
3.Filter is clogged and not replaced. Please replace the filter.

### **Q9:Poor air purification quality.**

- A9:**1.Not enough free space around the unit to ensure ventilation. Leave 15 in / 38 cm of clearance for proper air flow.  
2.Room size exceeds the expected size the unit covers. Select the right air purifier as per the actual room size.  
3.Air intake or outlet is blocked. Remove objects blocking air intake or outlet.  
4.Filter is dirty and cannot produce fresh air anymore. Replace the filter (see **Replacing the Filter**).

### **Q10:Unpleasant odor is produced.**

- A10:**First,locate the odor produced.  
For smell of burning from internal: Contact TaoTronics Support Team.  
For peculiar smell in air: Clean the unit, then run under Turbo mode for more than 2 hours. If still persists, contact TaoTronics Support Team.  
For mildew or dirty filter: Replace the filter.

### **Q11:Filter Reset Indicator does not turn off.**

- A11:**The air purifier has been reset incorrectly. Replace the filter and reset by pressing the **Filter Reset Button**.

### **Q12:Excessive noise is produced.**

- A12:**1.Filter packaging has not been removed. Remove the filter from its packaging before use.  
2.Foreign objects inside the unit.Immediately discontinue use and contact TaoTronics Support Team. **DO NOT** attempt to open the air purifier.

### **Q13:Air purifier does not power on or respond to button controls.**

- A13:**1.Power socket is not working properly. Try plugging the air purifier into a different outlet.  
2.Power cord is damaged or air purifier is malfunctioning. Immediately stop using and contact TaoTronics Support Team.

## Related to Abnormalities

# WARRANTY AND SERVICE

This product is covered with TaoTronics product and labor warranty for 12 months from the date of its original purchase.

The warranty will not apply in cases of:

- Accident, misuse, or repairs performed by unauthorized personnel.
- Any unit that has been tampered with or used for commercial purpose.
- Normal wear and tear of wearable parts.
- Use of force, damage caused by external influences.
- Damage caused by non-observance of the User Guide, e.g. connection to an unsuitable mains supply or non-compliance with the instructions.
- Partially or completely dismantled appliances.
- Defects caused by or resulting from damages from shipping or from repairs, service, or alteration to the product or any of its parts that have been performed by a repair person not authorized by TaoTronics.

We can only provide after sales service for products that are sold by TaoTronics or TaoTronics authorized retailers and distributors. If you have purchased your unit from a different place, please contact your seller for return and warranty issues.

\*Please have your invoice and order ID ready before contacting Customer Support.



## FCC COMPLIANCE

This device complies with Part 15 of the FCC Rules. Operation is subject to the following two conditions:

- (1) This device may not cause harmful interference, and
- (2) This device must accept any interference received, including interference that may cause undesired operation.

Model: TT-AP008



MADE IN CHINA



E-mail: [support@taotronics.com](mailto:support@taotronics.com)  
Website: [www.taotronics.com](http://www.taotronics.com)



Manufacturer: Shenzhen NearbyExpress Technology Development Co.,Ltd.  
Address: Floor 7, Building E, Galaxy World Phase II, Shenzhen,China