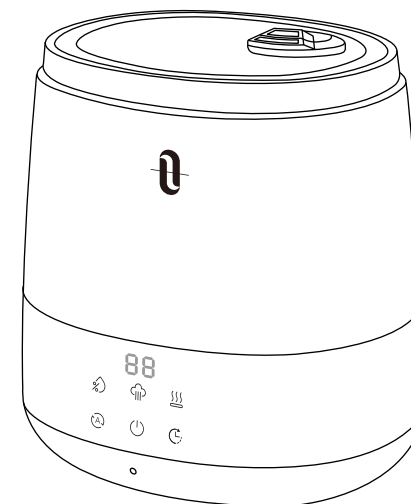


Extend your warranty to 18 months by  
registering your product on our website  
[taotronics.com/warranty](http://taotronics.com/warranty)

[support@taotronics.com](mailto:support@taotronics.com)



**E-mail :**  
[support@taotronics.com](mailto:support@taotronics.com)

**MANUFACTURER**

Manufacturer: Shenzhen NearbyExpress Technology Development Co.,Ltd.  
Address: Floor 7, Building E, Galaxy World Phase II, Shenzhen, China

Learn more about the EU Declaration of Conformity:  
<https://www.taotronics.com/pages/user-manual>

# CONTENTS

<b>STATEMENT</b>	<b>01</b>	<b>CLEANING AND MAINTENANCE</b>	<b>13</b>
<b>SAFETY INSTRUCTIONS</b>	<b>01</b>	Caution	<b>13</b>
BEFORE USING THE HUMIDIFIER	<b>02/03</b>	Daily Maintenance	<b>13</b>
WHEN USING THE HUMIDIFIER	<b>04</b>	Weekly Maintenance	<b>13</b>
AFTER USING THE HUMIDIFIER	<b>05</b>	Scale Removal Instructions	<b>13/15</b>
<b>PACKAGE CONTENTS</b>	<b>06</b>	Disinfecting Instructions	<b>15</b>
<b>SPECIFICATIONS</b>	<b>06</b>	Cleaning the Aroma Pad	<b>15</b>
<b>PRODUCT DIAGRAM</b>	<b>07</b>	Cleaning the Dustproof Sponge	<b>16</b>
<b>OPERATIONS AND FUNCTIONS</b>	<b>08</b>	End-of-Season Care and Storage	<b>16</b>
Add Water	<b>08</b>	Battery Replacement	<b>16</b>
Add Essential Oil (Optional)	<b>08</b>	<b>TROUBLESHOOTING GUIDE</b>	<b>17</b>
Control Buttons	<b>09</b>	<b>WARRANTY</b>	<b>19</b>
Remote Control	<b>09</b>	<b>TAOTRONICS CUSTOMER CARE</b>	<b>19</b>
Standby Mode	<b>10</b>		
LED Display	<b>10</b>		
Power On / Off	<b>10</b>		
Mist Adjustment	<b>10</b>		
Humidity Setting	<b>11</b>		
Warm Mist Adjustment	<b>11</b>		
AUTO Mode	<b>11</b>		
Sleep Mode	<b>11</b>		
Timer Setting	<b>12</b>		
Low Water Protection	<b>12</b>		
Memory Function	<b>12</b>		

## STATEMENT

Thank you for purchasing a TaoTronics product that has been tested to meet our stringent quality standards. This product is covered with TaoTronics product and labor warranty for **12** months from the date of its original purchase.

For any question, please email us with your order ID and problem or issue via [support@taotronics.com](mailto:support@taotronics.com), we will respond within 24 hours.

Please read the User Guide thoroughly. Clean and maintain the product as instructed. If any abnormalities occur, please refer to the Troubleshooting Guide first.

This warranty is void if the defect is caused by accidental damage, misuse, abuse, neglect, improper repair or alteration by unauthorized persons, or a failure to follow operating instructions provided with the product including adding essential oils directly into the tank and base. This warranty does not apply to normal wear and tear or commercial use.

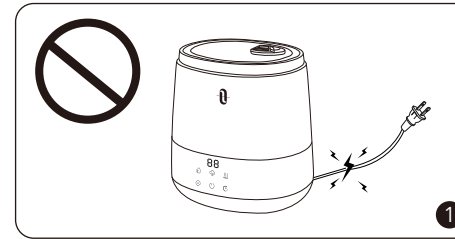
In no event shall liability exceed the purchase price paid by the purchaser of the product. Under no circumstances shall there be liability for any loss - direct, indirect or incidental - or consequential damage arising out of, or in connection with the use of the product.

## SAFETY INSTRUCTIONS

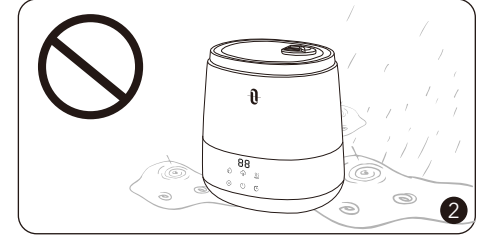
The humidifier was made with safe and environmental protection materials, it has been certified and complied with the requirement of sale regions' related regulations or laws.

**IMPORTANT:** Please read and save this SAFETY INSTRUCTIONS before using the device. Basic precautions should always be followed to reduce the risk of fire, electrical shock, and injury to persons or damage to the product.

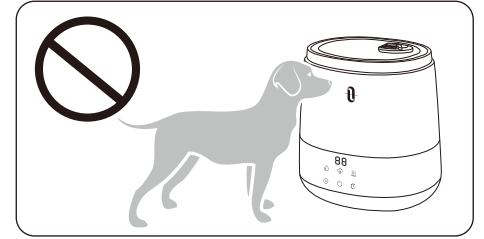
## BEFORE USING THE HUMIDIFIER



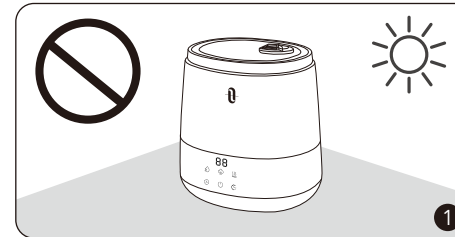
1. Please extend the cord and check any signs of damage. Do not use the humidifier if the cord has been damaged.



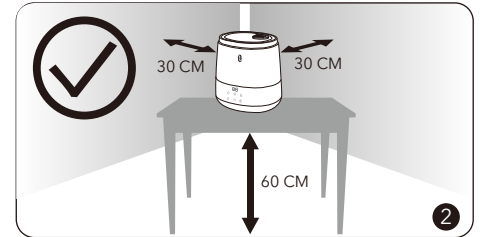
2. DO NOT place this humidifier in wet environments.



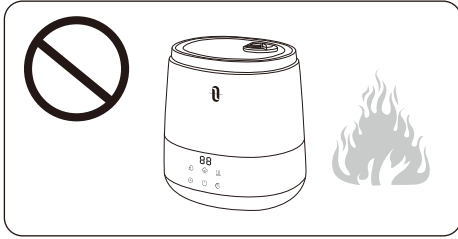
Please always keep the humidifier out of reach of patients & children & pet.



1. Please always place the unit on a smooth, flat, lint-free, non-metallic, waterproof and level surface and keep it away from direct sunlight.

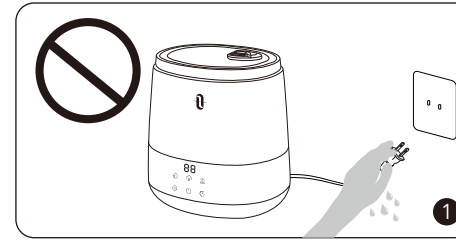


2. Always place the unit 2 feet (60 cm) above the floor, 12 inches (30 cm) away from the wall, other appliances or wooden furniture.

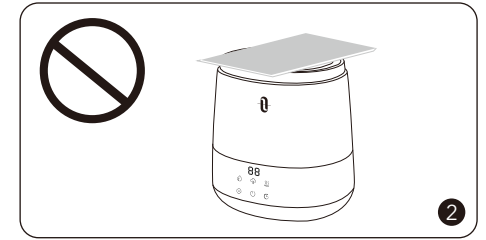


DO NOT place the humidifier near naked flames and heat sources, such as stove tops, ovens, radiators or computers.

## WHEN USING THE HUMIDIFIER



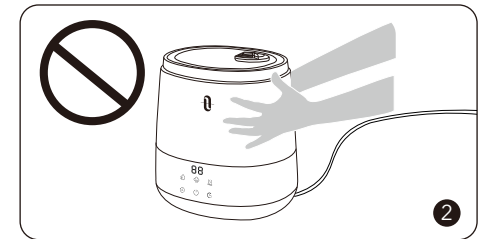
1. DO NOT plug the unit with wet hands.



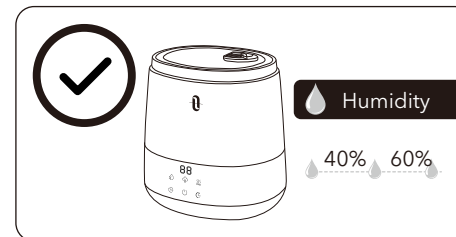
2. DO NOT use your hand or any other object to cover the nozzle while the unit is on to avoid damaging the product or causing injury.



1. DO NOT clean the unit while it is connected to a power source or while it is on.

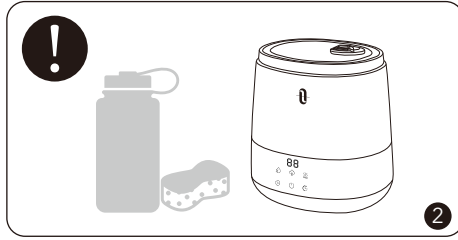
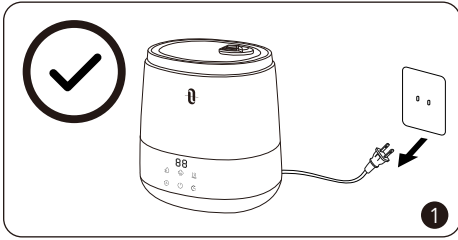


2. DO NOT move or tilt the humidifier while it is in operation.

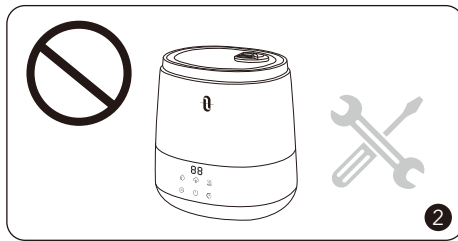
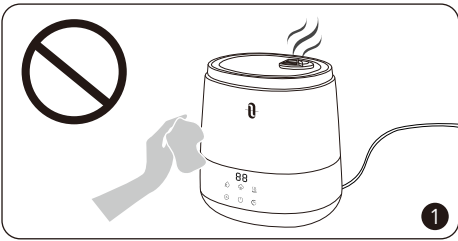


The most comfortable environmental humidity is between 40%-60%. Please adjust the mist as needed.

## AFTER USING THE HUMIDIFIER



1. Always disconnect from a power source by pulling the plug when not in use.
2. Humidifier requires regular cleaning. Please refer to, and follow the Cleaning and Maintenance instructions.



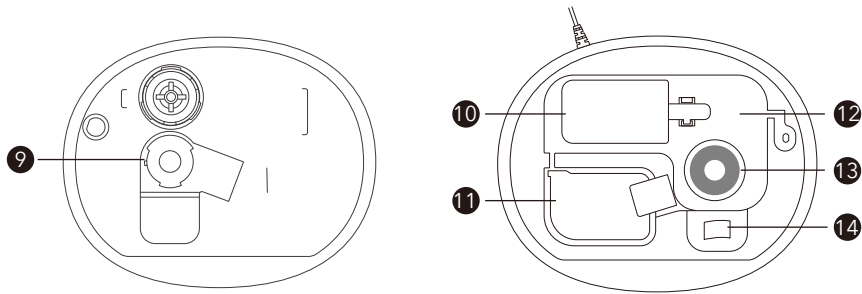
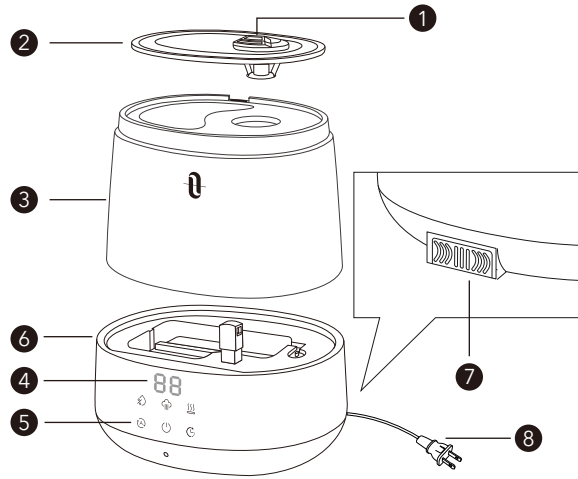
1. DO NOT clean the humidifier right after turning it off if the humidifier has been diffusing warm mist. Allow the humidifier to completely cool down before cleaning.
2. DO NOT attempt to repair or adjust any electrical or mechanical functions on this humidifier. Doing so will void your warranty.

## PACKAGE CONTENTS

- 1 x TaoTronics Top-Fill Hybrid Ultrasonic Humidifier (Model: TT-AH046)
- 1 x Remote Control
- 1 x Cleaning Brush
- 3 x Mineral Absorption Pads (1 pre-installed)
- 3 x Aroma Pads (1 pre-installed)
- 3 x Dustproof Sponge (1 pre-installed)
- 1 x Thank You Card
- 1 x User Guide

## SPECIFICATIONS

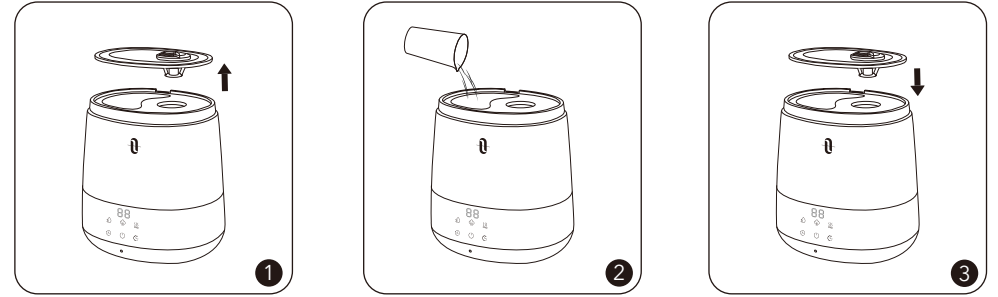
Model	TT-AH046
Cold Mist Output	300 ml/h (High)
	200 ml/h (Medium)
	100 ml/h (Low)
Warm Mist Output	550ml/h (Max)
Voltage	100-120V~ 50 / 60 Hz
Water Tank Volume	6.0L / 1.59Gal
Power	280W
Working Time on a Full Tank	10-60h
Applicable Space	430-753 ft <sup>2</sup> /40-70m <sup>2</sup>



## PRODUCT DIAGRAM

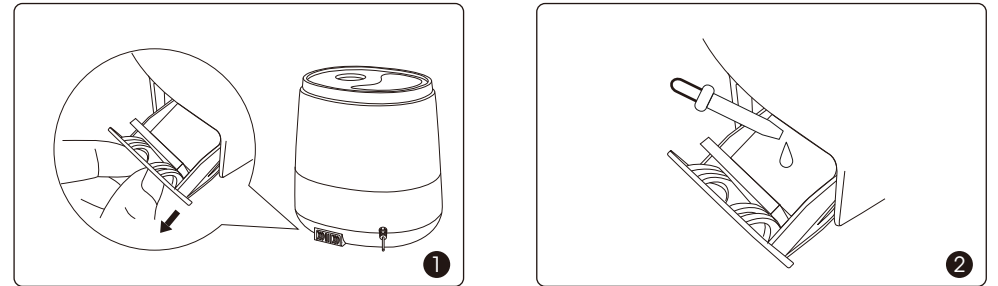
- |                    |                     |
|--------------------|---------------------|
| 1. Nozzle          | 8. Power Cord       |
| 2. Tank Cover      | 9. Mist Tube        |
| 3. Water Tank      | 10. Water Floater   |
| 4. LED Display     | 11. Heating Element |
| 5. Control Buttons | 12. Water Reservoir |
| 6. Base            | 13. Atomizer        |
| 7. Aroma Box       | 14. Air Outlet      |

## OPERATIONS AND FUNCTIONS



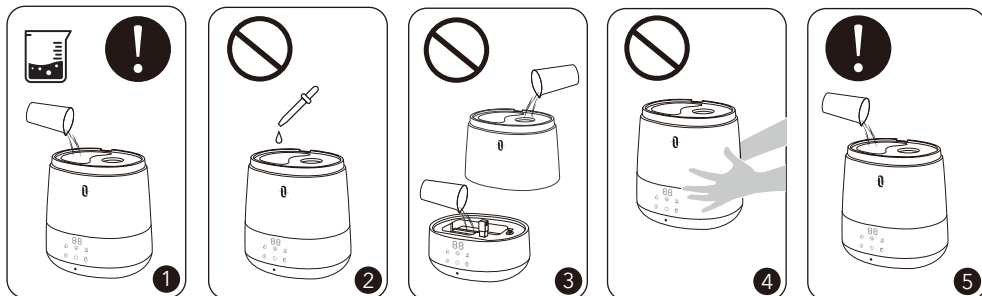
### Add Water

1. Remove the tank cover.
2. Fill the tank with filtered or purified water.
3. Place the tank cover back.



### Add Essential Oil (Optional)

1. Remove the aroma box (at the back of the base) by pulling it out.
2. Add several drops of essential oil to the aroma pad. Insert the aroma box back after adding the essential oil.

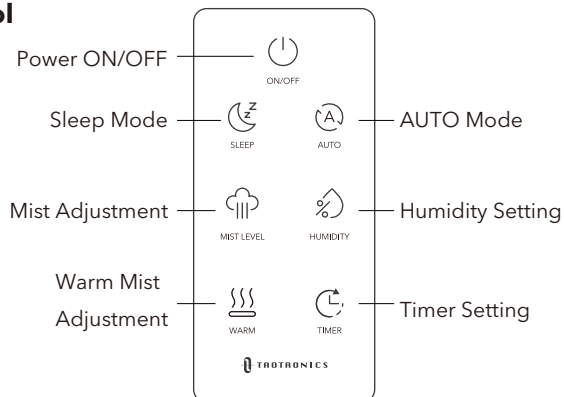


1. If tap water is too hard, it is recommended to use filtered or distilled water to avoid white dust. DO NOT use hot water.
2. DO NOT add any essential oils or medicinal tablets into the water tank.
3. DO NOT add water into the base or through nozzle.
4. DO NOT move the humidifier while the water tank is full of water to avoid leakage or base overfilling.
5. You can fill the water tank without removing it from the base, pay attention to avoid water getting into the air outlet.

### Control Buttons



### Remote Control



**Note:** For added convenience, the same control buttons can be found on the remote control.

### Standby Mode

- Connect the humidifier to a power source, the unit is in Standby mode now with a beep. The LED display and all control buttons will light up for 2 seconds.
- If no operation is done within 2 seconds under Standby mode, the LED display will turn off automatically.

# 88

### LED Display

- Shows the current environmental %humidity level (Relative Humidity).
- Shows the set mist level (2, 3, 1) while setting.
- Shows the set %humidity level (40% ~ 80% RH) while setting.
- Shows the set time (0 ~ 9H) while setting.



### Power On / Off

- Tap the Power Button once to turn the humidifier ON with default settings: medium mist (level 2), warm mist (level 3) & current environmental humidity.
- When there is not enough water inside the water reservoir, the humidifier will stop misting and Low Water Protection will be activated. The LED display will flash 3 times with 3 beeps.
- Tap it again to turn the humidifier OFF. The fan will continue working for 3 minutes to dry the mist tube.



### Mist Adjustment

- When the unit is on, tap the Mist Button to cycle through Medium (level 2) -> High (level 3) -> Low (level 1) mist levels. The corresponding mist level will light up on the LED Display.
- The set mist level will flash three times to confirm your setting.



## Humidity Setting

- Tap the Humidity Button to set the humidity level from 40% to 80% in 5% increments, the set humidity level will flash three times to confirm your setting.
- When the preset humidity level is reached, the unit will stop misting.
- To cancel Humidity setting, tap and hold the Humidity Button for 2 seconds or repeatedly tap the Humidity Button until "--" is displayed.

The most comfortable environmental humidity is between 40%-60%. Please adjust the mist as needed.



## Warm Mist Adjustment

- Tap the Warm Mist Button to cycle through High (level 3) -> Medium (level 2) -> Low (level 1) heat levels -> OFF. The corresponding heat level will light up on the LED Display.
- The set heat level will flash three times to confirm your setting.



## AUTO Mode

- Tap the AUTO button to activate the automatic humidifying mode.
- Under AUTO mode, the mist level and heat level are automatically adjusted based on the environmental humidity to the most comfortable level (55%~65%).
- Once 65% humidity is reached, the humidifier will shut off automatically. When the environmental humidity is below 60%, the unit will restart working again.
- When AUTO mode is activated, changing the mist level or heat level will cancel the AUTO mode.



## Sleep Mode

- Tap and hold the AUTO Button on the control panel for 2 seconds or directly press the Sleep Button on the remote control to turn off the LED display with a beep.
- To turn the display back on, tap any button on the control panel to wake it up. If no operation is done within 3 seconds, the LED display will turn off automatically.

- When Low Water Protection is activated under sleep mode, the LED display will flash 3 times without beeps. Tap and hold the AUTO Button for 2 seconds again to turn off the LED display with a beep.



## Timer Setting

- Tap the Timer Button to set the timer from 1 to 9 hours by 1 hour increments, the timer will flash three times to confirm your setting. When time is up, the unit will automatically turn off.
- To cancel Timer setting,
  1. Keep tapping the Timer button until "0H" displayed or
  2. Tap and hold the Timer Button for 2 seconds.

## Low Water Protection

- When there is not enough water inside the water reservoir, the humidifier will stop misting and Low Water Protection will be activated. The LED display will flash 3 times with 3 beeps. It is designed for safety to prevent the humidifier from possibly overheating and damaging the atomizer.
- The humidifier cannot be started under low water status.

## Memory Function

If power is not disconnected, the humidifier will always remember your last settings (except timer setting) once you turn it on again.



## CLEANING AND MAINTENANCE



### Caution

1. DO NOT submerge the base in water.
2. Make sure water does not enter the base through the air outlet, air inlet, or the control buttons and LED display.
3. DO NOT wash any part of this humidifier in dish washer which will damage the humidifier and void the warranty.

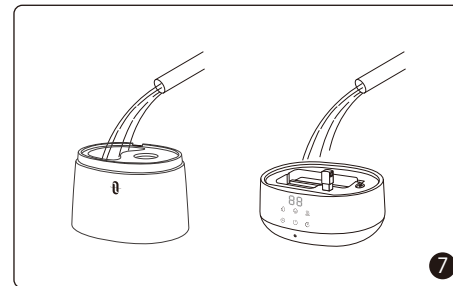
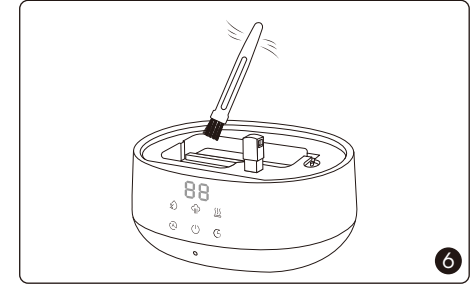
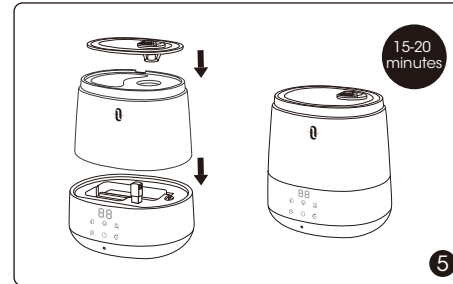
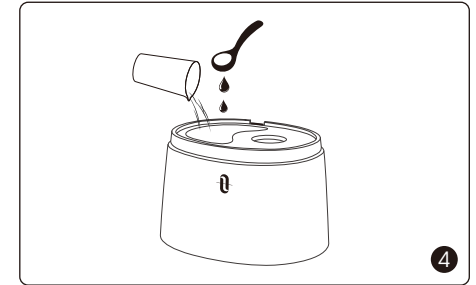
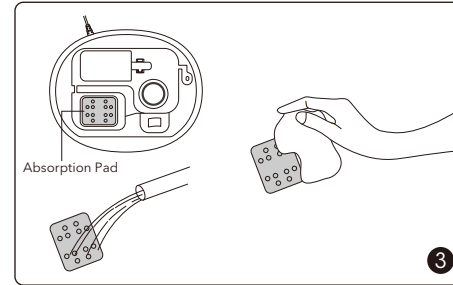
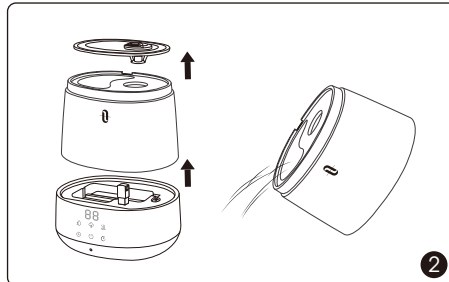
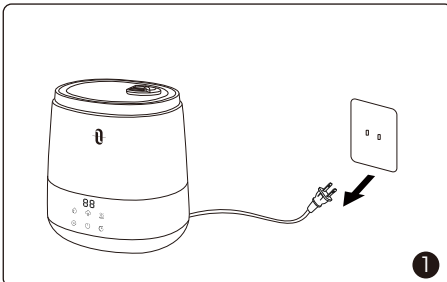
### Daily Maintenance

Turn off the humidifier, unplug it from the power source. Drain water from the tank, reservoir and base.

### Weekly Maintenance

1. To properly clean your humidifier, we recommend you to remove scale and disinfect the humidifier separately.
2. DO NOT mix vinegar and bleach solutions together. Do not use more than 1 tsp. of bleach per gallon of water to avoid damaging your humidifier.

### Scale Removal Instructions



1. Turn off and unplug the humidifier.
2. Remove the water tank from the base and pour out any remaining water.
3. Remove the absorption pad inside the heating element and rinse under clean water. Dry the pad with a clean, dry cloth.

4. Fill the water tank half full. Add in 1 teaspoon of undiluted distilled white vinegar.
5. Place the water tank onto the base. The vinegar solution will enter the water reservoir to loosen mineral buildup (scale) on the atomizer, water floater and the bottom of the water tank. Set it still for 15-20 minutes.
6. Clean all parts of the water reservoir with the included cleaning brush to remove any mineral buildup.
7. Rinse both the water reservoir and water tank until the smell of vinegar (for scale removal) or bleach solution (for disinfecting, see below) is gone.

**Note:**

It is recommended to change the absorption pad every 2-4 weeks depending on water hardness.

### Disinfecting Instructions

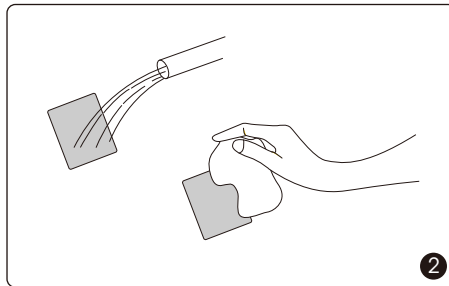
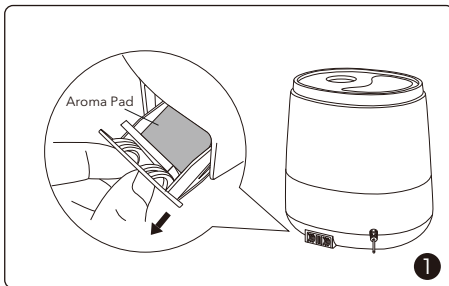
Disinfecting the humidifier removes any remaining bacteria or mold after cleaning both the water tank and water reservoir. It is recommended to disinfect your humidifier at least once a week with regular use as well as before and after storing for long periods of time.

1. Clean the water tank and water reservoir as instructed in the previous section.
2. Fill the water tank half full. Add in ½ tsp of bleach.
3. Allow the solution to soak for at least 30 minutes, but no longer than 1 hour.
4. Pour out the solution and rinse both water tank and water tank under cold water. Allow all parts to air dry before reassembling.

### Cleaning the Aroma Pad

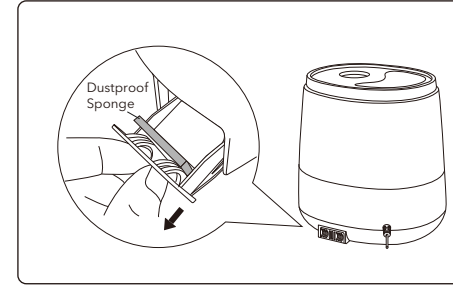
1. To clean the aroma pad, remove it from the aroma box.
2. Rinse the pad under warm water, then dry it with a clean cloth and place it back into the aroma box.

**Note:** It is recommended to change the aroma pad every 6 months.



### Cleaning the Dustproof Sponge

1. To clean the dustproof sponge, remove it from the aroma box and clean with water or detergent once a month.
2. Put it back in place after cleaning.

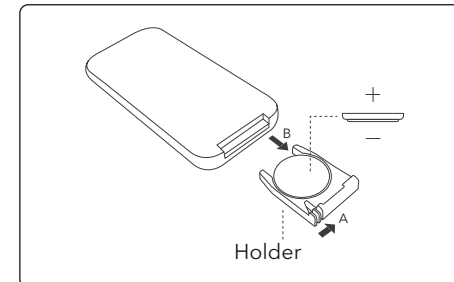


### End-Of-Season Care and Storage

1. Follow the cleaning instructions when the humidifier will not be used for at least one week, or at the end of the season. Remove any accessories used with the humidifier and allow the humidifier and accessories to dry completely before storing.
2. DO NOT store with water inside the base, water reservoir, or tank.
3. Pack the unit safely and store in a cool, dry location.

### Battery Replacement

1. Remove the battery holder by pressing the locking tab A with your thumb and pulling it out as per arrow B.
2. Properly dispose the old battery.
3. Replace with a new CR2025 Type Lithium Battery, making sure the (+) side facing up.
4. Gently push in the holder until securely locked into place.



**CAUTION:**

- Danger of explosion if battery is incorrectly replaced. Replace only with the same or equivalent type.
- Do not attempt to dismantle or charge the batteries.
- Do not dispose the batteries in fire, batteries may explode or leak.

## TROUBLESHOOTING GUIDE

1. If the information listed in the troubleshooting guide can't solve your problem, please email us at [support@taotronics.com](mailto:support@taotronics.com).
2. Failure to keep this unit clean from mineral deposits may affect operation of this unit.
3. Customer failure to follow these instructions may void the warranty.

### Troubleshooting Guide

Problem	Possible Causes	Solution
LED display does not light up	Power cord is not properly plugged in.	Ensure the unit is properly plugged in.
	No power from power outlet.	Try another power outlet.
LED display and indicators flash with beeps	Not enough water inside the water reservoir.	Add water into the water tank.
LED display is on, no mist or little mist is produced	Not enough water inside the water reservoir.	Add water into the water tank.
	Mist level is set too low.	Adjust to the maximum mist.
	Humidity is set too low.	Check if the current humidity is higher than the preset humidity, reset to a higher level.
	Mineral buildup on the atomizer.	Clean the atomizer as instructed.

Problem	Possible Causes	Solution
Mist height is low, damping surrounding desk or floor. Condensation forms around humidifier or on windows and walls	Mist level is set too high for the room size.	1. Check if the room is too humid and adjust to lower mist. 40%-60% works best. 2. Open door and windows, or change to a larger room.
	Air inlet is blocked.	Humidifier should be placed on a hard flat surface, 2 feet above the floor and 12 inches away from the wall. Point nozzle away from wall or window.
	Low indoor temperature leads to liquefaction.	Raise the room temperature to 25°C/77°F.
Bad / Strange odor	Unit needs to be cleaned.	1. Clean the humidifier as instructed. 2. Leave the empty and opened water tank in a cool place for 12 hours without the tank cap attached.
Strange water noise	Water is going down to the water reservoir.	This is normal while it is working.
Humidifier is getting too hot	Unit works for long period of time.	Power off and place in a well-ventilated place for 10 minutes.

## WARRANTY

This product is covered with TaoTronics product and labor warranty for 12 months from the date of its original purchase. You will be given a warranty extension of 18 months if the product is registered on our website ([www.taotronics.com](http://www.taotronics.com)).

Any defective part will be, at the discretion of **SUNVALLEYTEK INTERNATIONAL INC.**, repaired or replaced at no charge if the appliance has not been tampered with and has been used according to these printed directions.

If any problems occur, please contact TaoTronics support ([support@taotronics.com](mailto:support@taotronics.com)) immediately to launch a warranty claim. Specify model number and your Amazon order number. Our Consumer Service Representative will respond within 1 business day, advise you how to correct the problem yourself, or instruct you on how to return the defective unit back to us for repair or replacement.

We can only provide after sales service for products that are sold by TaoTronics or TaoTronics authorized retailers and distributors. If you have purchased your unit from a different place, please contact your seller for return and warranty issues.

## CONTACT / TAOTRONICS CUSTOMER CARE

PLEASE CONTACT US BEFORE RETURNING THIS PRODUCT TO THE STORE.

EMAIL TAOTRONICS CUSTOMER CARE FOR PROBLEMS AND QUESTIONS.

WE WILL RESPOND WITHIN 1 BUSINESS DAY.

**E-mail:** [support@taotronics.com](mailto:support@taotronics.com)

**Website:** [www.taotronics.com](http://www.taotronics.com)

## FCC Compliance

This device complies with Part 18 of the FCC Rules. Operation is subject to the following two conditions:

- (1) This device may not cause harmful interference, and
- (2) This device must accept any interference received, including interference that may cause undesired operation.



## WEEE Compliance

Correct Disposal of This Product (Waste Electrical & Electronic Equipment)

(Applicable in countries with separate collection systems)

This marking on the product, accessories or literature indicates that the product and its electronic accessories should not be disposed of with other household waste at the end of their working life. To prevent possible harm to the environment or human health from uncontrolled waste disposal, please separate these items from other types of waste and recycle them responsibly to promote the sustainable reuse of material resources. Household users should contact either the retailer where they purchased this product, or their local government office, for details of where and how they can take these items for environmentally safe recycling. Business users should contact their supplier and check the terms and conditions of the purchase contract. This product and its electronic accessories should not be mixed with other commercial wastes for disposal.

尺寸:150\*200mm

装订成册

材质:封面128克铜版纸 内页80克书纸