



www.taotronics.com



Extend your warranty to 18 months by  
registering your product on our website  
[taotronics.com/warranty](http://taotronics.com/warranty).

[support@taotronics.com](mailto:support@taotronics.com)

**E-mail:**

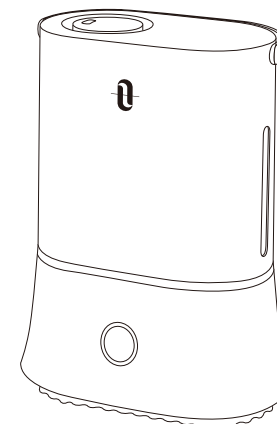
[support@taotronics.com](mailto:support@taotronics.com)

**MANUFACTURER**

Manufacturer: Shenzhen NearbyExpress Technology Development Co.,Ltd.  
Address: Floor 7, Building E, Galaxy World Phase II, Shenzhen, China

**Learn more about the EU Declaration of Conformity:**

<https://www.taotronics.com/pages/user-manual>



Model: TT-AH045

TaoTronics Ultrasonic Cool Mist Humidifier  
**User Guide**



TT-AH045\_V1.1\_EN

# CONTENTS

<b>STATEMENT</b>	01
<b>SAFETY INSTRUCTIONS</b>	01
<b>IMPORTANT SAFETY INSTRUCTIONS</b>	02
BEFORE USING THE HUMIDIFIER	04
WHEN USING THE HUMIDIFIER	06
AFTER USING THE HUMIDIFIER	07
<b>PACKAGE CONTENTS</b>	08
<b>SPECIFICATIONS</b>	08
<b>PRODUCT DIAGRAM</b>	09
<b>OPERATIONS AND FUNCTIONS</b>	10
Add water	10
Light Ring	11
Control Button	11
Smart Mode	12
Tank Light	12
<b>CLEANING AND MAINTENANCE</b>	13
Caution	13
Daily Maintenance	13
Weekly Maintenance	13
Scale Removal Instructions	13
Disinfecting Instructions	15
Clean the Dustproof Sponge	15
End-Of-Season Care and Storage	15
<b>TROUBLESHOOTING GUIDE</b>	16
<b>WARRANTY</b>	19
<b>TAOTRONICS CUSTOMER CARE</b>	19

## STATEMENT

Thank you for purchasing a TaoTronics product that has been tested to meet our stringent quality standards. This product is covered with TaoTronics product and labor warranty for **12** months from the date of its original purchase.

Please email us with your order ID and problem or issue via **support@taotronics.com**, we will respond within 24 hours.

Please read the User Guide thoroughly. Clean and maintain the product as instructed. If any abnormalities occur, please refer to the Troubleshooting Guide first.

This warranty is void if the defect is caused by accidental damage, misuse, abuse, neglect, improper repair or alteration by unauthorized persons, or a failure to follow operating instructions provided with the product including adding essential oils directly into the tank and base. This warranty does not apply to normal wear and tear or commercial use.

In no event shall liability exceed the purchase price paid by the purchaser of the product. Under no circumstances shall there be liability for any loss - direct, indirect or incidental - or consequential damage arising out of, or in connection with the use of the product.

## SAFETY INSTRUCTIONS

The humidifier was made with safe and environmental protection materials, it has been certified and complied with the requirement of sale regions' related regulations or laws.

**IMPORTANT:** Please READ AND SAVE THESE SAFETY INSTRUCTIONS before using the device. Basic precautions should always be followed to reduce the risk of fire, electrical shock, and injury to persons or damage to the product.

## IMPORTANT SAFETY INSTRUCTIONS

### BEFORE USING THIS APPLIANCE READ ALL INSTRUCTIONS AND CAUTIONARY MARKINGS IN YOUR USER GUIDE AND ON THE APPLIANCE

When using an electrical appliance, basic precautions should always be followed, including the following:

1. This is an electrical appliance and requires attention when in use. This appliance is not intended for use by persons (including children) with reduced physical, sensory or mental capabilities or lack of experience and knowledge, unless they have been given supervision or instruction concerning use of the appliance by a person responsible for their safety. Children should always be supervised to ensure that they do not play with the appliance.
2. **WARNING:** Do not attempt to refill humidifier without first unplugging the unit from its electrical outlet. Failure to heed this warning may cause personal injury. Be sure to unplug the unit by pulling on the plug and not the cord.
3. **WARNING:** Do not touch the water in the humidifier when the humidifier is connected into power supplies. Always turn off and unplug the power cord before cleaning or maintenance.
4. **WARNING:** The best suitable working environment temperature for the humidifier is 5°C -40°C (41°F -102°F), and the relative humidity shall NOT exceed 80%RH. Run humidifier in an environment out of this situation may cause damage to the humidifier and damage of properties.
5. When using the humidifier for the first time after being removed from its original box, it is recommended to place the unit at room temperature for about 30 minutes before operation.
6. Do not use hot water, always use clean water with temperature no higher than 40°C (102°F) for this humidifier.
7. Use this appliance only for intended household use as described in this manual. Any other use not recommended by the manufacturer may cause fire, electric shock, or injury to persons. The use of attachments not recommended or sold by the manufacturer may cause hazards.
8. **DO NOT** allow the Moisture Outlet to directly face the wall. Moisture could cause damage, particularly to wall paper.
9. Do not use humidifier in an area where humidity level is in excess of 60%. A humidity level below 20% can be unhealthy and uncomfortable. The recommended humidity level is between 40%-60%. Excessive humidity in a room can cause water condensation on windows and some furniture. If this

happens, turn the humidifier OFF.

10. NEVER use humidifier in a closed room, particularly where a child may be sleeping, resting, or playing (a closed room may result in excessive humidity).

If moisture forms on the walls, floors or windows of the room, turn off the humidifier. The room already has plenty of humidity and additional moisture may cause damage.

11. This humidifier requires daily maintenance and regular cleaning to prevent the growth of bacteria. If you do not follow the recommended care and maintenance guidelines, micro-organisms may be able to grow in the water within the water tank or the base reservoir. You must routinely follow the cleaning procedures that follow in order to ensure proper, efficient operation of your humidifier. Proper maintenance and cleaning is essential to the continued performance of your unit and the avoidance of algae or bacteria build-up.

Refer to the CLEANING instructions provided. Never clean the humidifier in any manner other than as instructed in this manual.

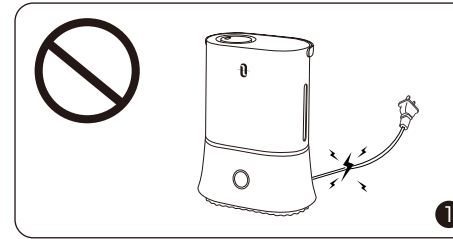
12. The humidifier should always be unplugged and emptied when not in operation or while being serviced or cleaned.

13. DO NOT operate your humidifier without the water tank in place or if the unit is empty.

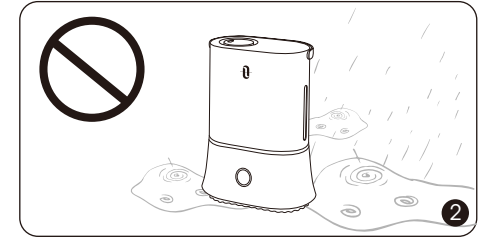
14. NEVER drop or insert any object into any openings of the humidifier.

## READ AND SAVE THESE INSTRUCTIONS

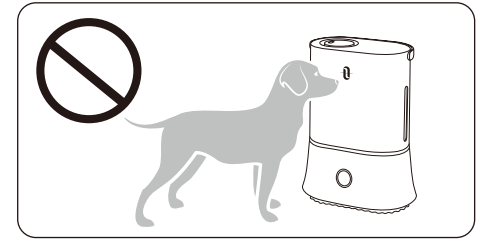
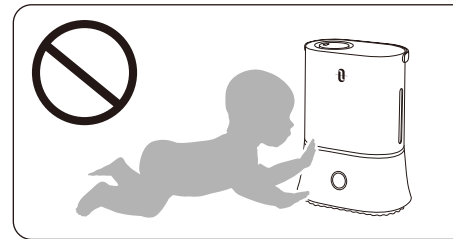
### BEFORE USING THE HUMIDIFIER



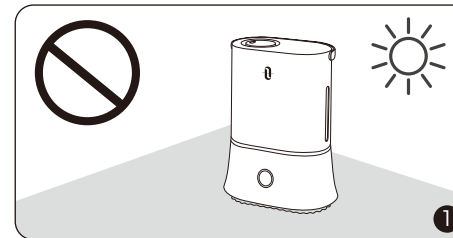
1. Please extend the cord and check any signs of damage. Do not use the humidifier if the cord has been damaged.



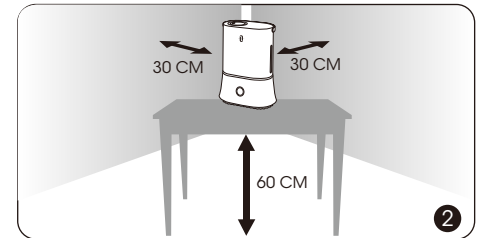
2. DO NOT place this humidifier in wet environments.



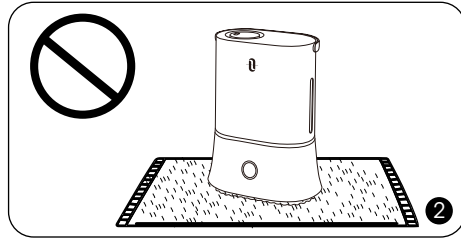
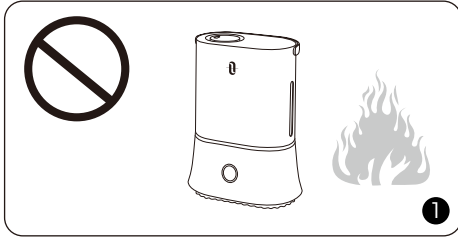
Please always keep the humidifier out of reach of patients & children & pet.



1. Please always place the unit on a smooth, flat, lint-free, non-metallic, waterproof and level surface and keep it away from direct sunlight.

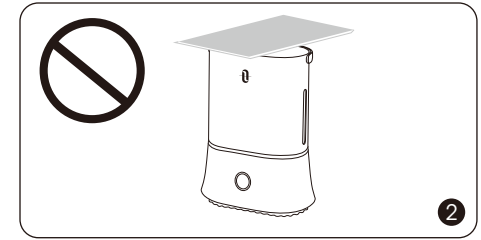
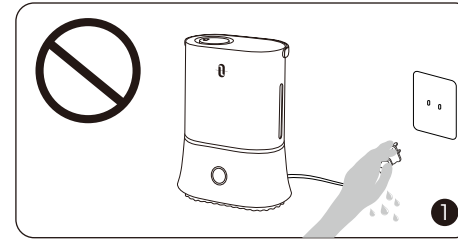


2. Always place the unit 2 feet (60 cm) above the floor, 12 inches (30 cm) away from the wall, other appliances or wooden furniture.

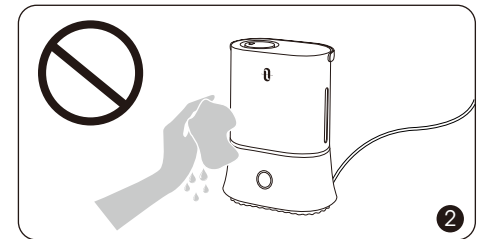
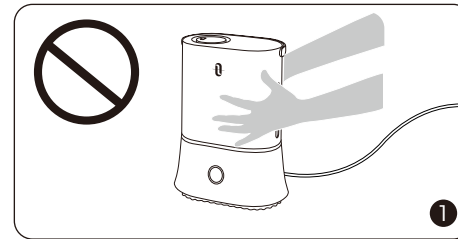


1. DO NOT place the humidifier near naked flames and heat sources, such as stove tops, ovens, radiators or computers.
2. DO NOT run cord under carpeting. Do not cover cord with throw rugs, runners or the like. Do not route cord under furniture or appliances. Arrange cord away from traffic area and where it will not be tripped over.

## WHEN USING THE HUMIDIFIER



1. DO NOT plug the unit with wet hands.
2. DO NOT use your hand or any other object to cover the nozzle while the unit is on to avoid damaging the product or causing injury.

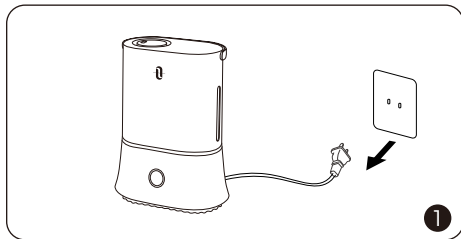


1. DO NOT move or tilt the humidifier while it is in operation.
2. DO NOT clean the unit while it is connected to a power source or while it is on.

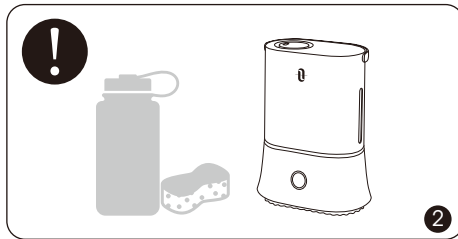


The most comfortable environmental humidity is between 40%-60%. Please adjust the mist as needed.

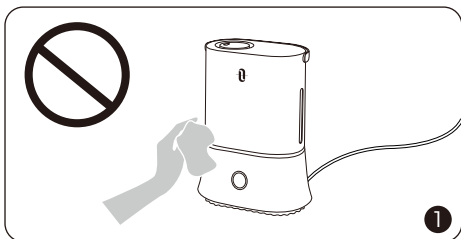
## AFTER USING THE HUMIDIFIER



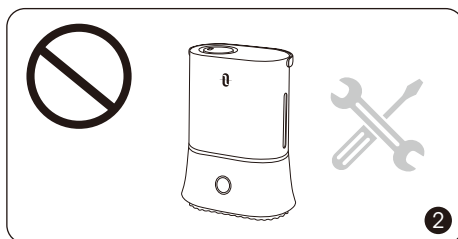
1. Always disconnect from a power source by pulling the plug when not in use.



2. Humidifier requires regular cleaning. Please refer to, and follow the Cleaning and Maintenance instructions.



1. DO NOT clean the humidifier right after turning it off if the humidifier has been working for a long time. Allow the humidifier to completely cool down before cleaning.



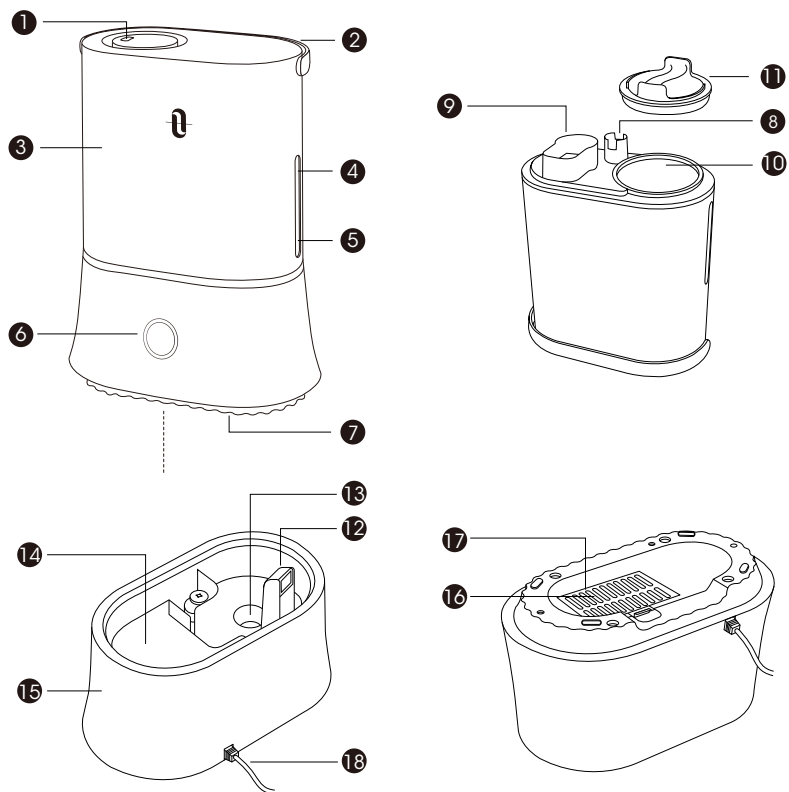
2. DO NOT attempt to repair or adjust any electrical or mechanical functions on this humidifier. Doing so will void your warranty.

## PACKAGE CONTENTS

- 1 x TaoTronics Ultrasonic Cool Mist Humidifier (Model: TT-AH045)
- 1 x Cleaning Brush
- 2 x Dustproof Sponge (1 pre-installed)
- 1 x Thank You Card
- 1 x User Guide

## SPECIFICATIONS

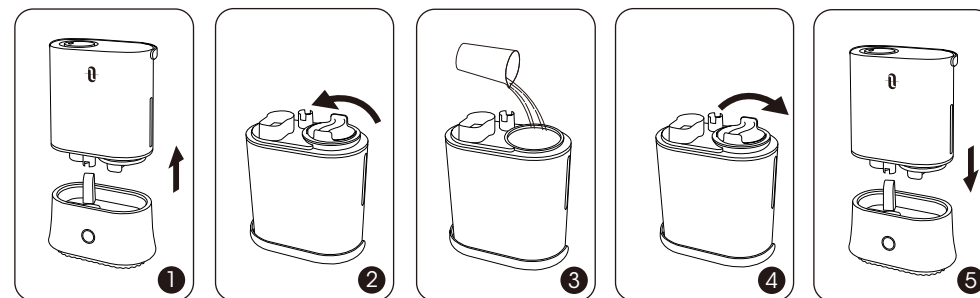
Model	TT-AH045
Operating Voltage	US/CA: 100-120V~ 50 / 60Hz
Rated Power	25W
Water Tank Capacity	4.0L / 1.06Gal
Mist Output	Min: 100ml/h Medium: 200ml/h Max: 300ml/h
Working Time on a Full Tank	12~40h
Recommended Room Size	10-30 m <sup>2</sup> / 108-323 ft <sup>2</sup>
Noise	≤28dB



## PRODUCT DIAGRAM

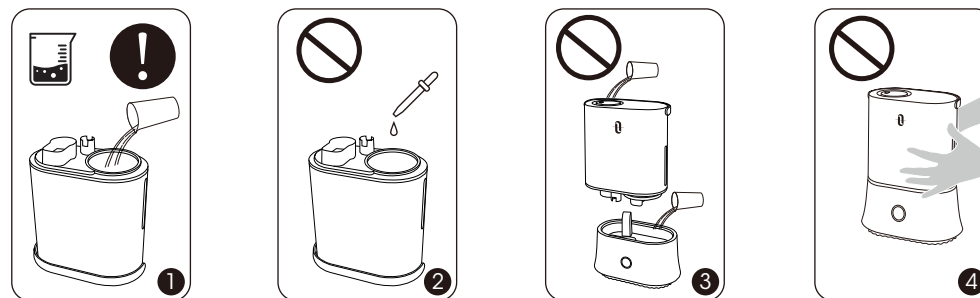
- |                       |                       |
|-----------------------|-----------------------|
| 1. Nozzle             | 10. Water Inlet       |
| 2. Handle             | 11. Tank Cap          |
| 3. Water Tank         | 12. Air Outlet        |
| 4. Water Level Window | 13. Atomizer          |
| 5. Tank Light         | 14. Water Reservoir   |
| 6. Control Button     | 15. Base              |
| 7. Night Light        | 16. Air Inlet         |
| 8. Water Floater      | 17. Dustproof Sponge  |
| 9. Muffler            | 18. Power Cord & Plug |

## OPERATIONS AND FUNCTIONS



### Add water

1. Lift the water tank and turn it upside down.
2. Remove the tank cap by unscrewing counterclockwise.
3. Fill the tank with filtered or purified cool water only.
4. Attach the tank cap back by screwing clockwise.
5. Place the water tank back onto the base. Make sure it fits together securely so that water can go from the tank to the reservoir.

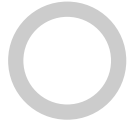


1. If tap water is too hard, it is recommended to use filtered or distilled water to avoid white dust. **DO NOT** use hot water.
2. **DO NOT** add any essential oils or medicinal tablets into the water tank.
3. **DO NOT** add water into the base or through nozzle.
4. **DO NOT** move the humidifier while the water tank is full of water to avoid leakage or base overfilling.

Connect the humidifier to a power source, the unit is in Standby mode now: light ring, night light & tank light on then off in 2 seconds.

## Light Ring

The light ring indicates the working status of the humidifier.



### White

Humidifier on

**White Fade in-out -> White I -> White II -> White III**

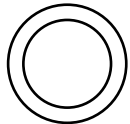
Smart Mode -> Low Mist -> Medium Mist -> High Mist



### Flash Red

Low water protection

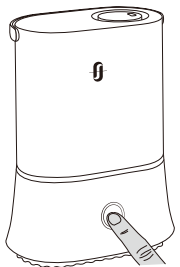
Water tank lifted up



### Light OFF

Auto off if no operation in 40 seconds

## Control Button



### • Short Press

Repeatedly press to cycle through ON -> Smart Mode ->

Low Mist -> Medium Mist -> High Mist -> OFF.

### • Long Press

Press and hold for 2 seconds to turn off/on the tank light and night light (default: ON).

## Smart Mode

- Press to turn on Smart Mode (light ring fade in-out white).
- When Smart Mode is activated, the humidifier will adjust the mist level automatically to a recommended comfortable and healthy level based on the environmental humidity.
- Stop working: reaches 65% humidity.
- Restart working: below 60% humidity.

## Tank Light

The water tank light indicates the environmental humidity levels.

### Orange



Low (<40%)

### Purple



Medium (40~65%)

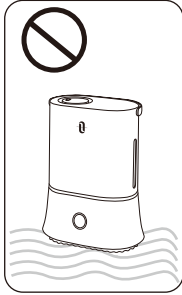
### Blue



Blue (>65%)



## CLEANING AND MAINTENANCE



### Caution

1. DO NOT submerge the base in water.
2. Make sure water does not enter the base through the air outlet, air inlet, or the control buttons and LED display.
3. DO NOT wash any part of this humidifier in dish washer which will damage the humidifier and void the warranty.

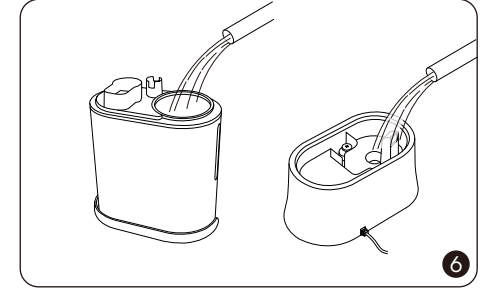
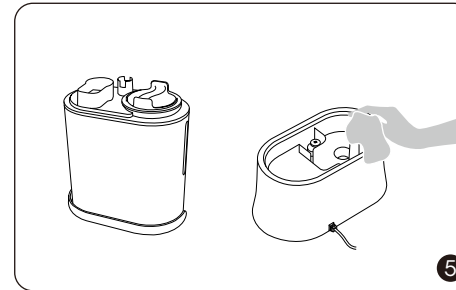
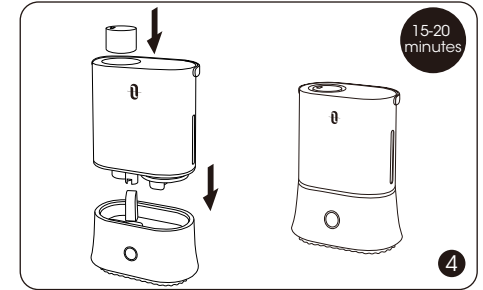
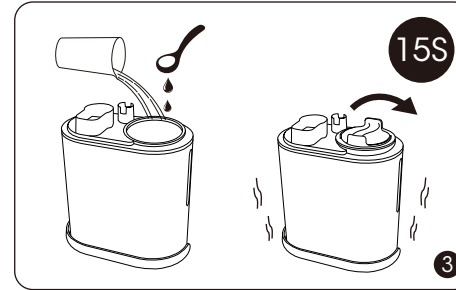
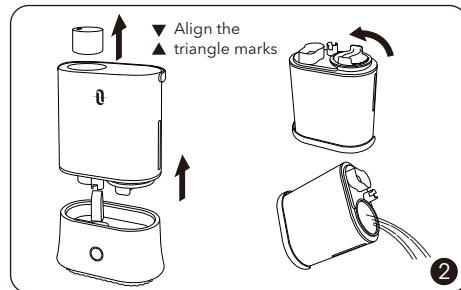
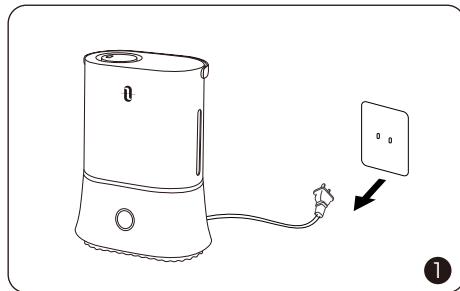
### Daily Maintenance

Turn off the humidifier, unplug it from the power source. Drain water from the tank, reservoir and base.

### Weekly Maintenance

1. To properly clean your humidifier, we recommend you to remove scale and disinfect the humidifier separately.
2. DO NOT mix vinegar and bleach solutions together. Do not use more than 1 tsp. of bleach per gallon of water to avoid damaging your humidifier.
3. Please make sure the rubber ring & rubber cap & spring on the tank cap is installed properly after cleaning to avoid water leakage. For more detailed information, please refer to the Troubleshooting Guide.

### Scale Removal Instructions

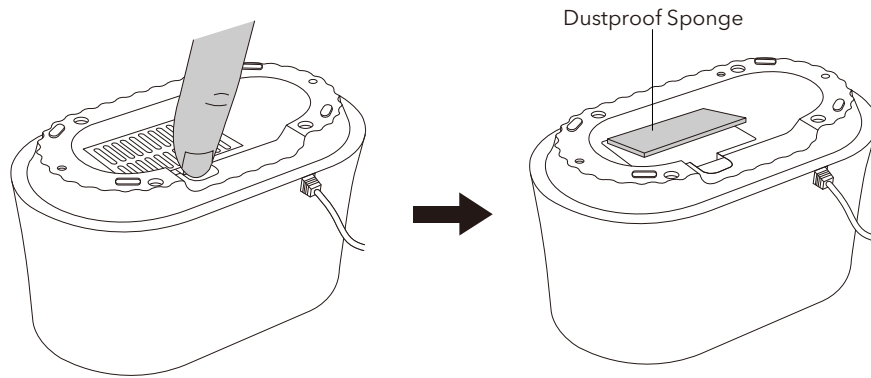


1. Turn off and unplug the humidifier.
2. Align the triangle marks ( $\nabla$  &  $\triangle$ ) and remove the nozzle. Turn the water tank upside down. Remove the tank cap. Make sure that the sealing ring does not come off. Drain water from the water tank and base. Remove any accessories and set aside.
3. Fill the water tank half full. Add in 1 teaspoon of undiluted distilled white vinegar. Attach the tank cap and shake for 15 seconds.
4. Place the tank onto the base. The vinegar solution will enter the water reservoir to loosen mineral buildup (scale) on the atomizer, water floater and the bottom of the water tank. Set still for 15-20 minutes.
5. Uncap the tank cap and drain the solution. Wipe the atomizer and floater with a soft cloth to remove loosened mineral deposits.
6. Rinse both the water reservoir and water tank until the smell of vinegar (for scale removal) or bleach solution (for disinfecting, see below) is gone.

## Disinfecting Instructions

1. Follow steps 1-2 of the previous section on scale removal.
2. Fill the water tank half full. Add in ½ tsp of bleach. Place the tank cap back on. Swish the solution around in tank. Place the tank on the base. The bleach solution will enter and disinfect the water reservoir as well as the other components. Set still for 15-20 minutes.
3. Follow steps 4-6 of the previous section on scale removal to complete disinfecting the humidifier.

## Clean the Dustproof Sponge



Clean the dustproof sponge (at the bottom of base) with water or detergent once a month. Put it back in place after cleaning.

## End-Of-Season Care and Storage

1. Follow the cleaning instructions when the humidifier will not be used for at least one week, or at the end of the season. Remove any accessories used with the humidifier and allow the humidifier and accessories to dry completely before storing.
2. DO NOT store with water inside the base, water reservoir, or tank.
3. Pack the unit safely and store in a cool, dry location.

## TROUBLESHOOTING GUIDE

1. If the information listed in the troubleshooting guide can't solve your problem, please email us for help.
2. Failure to keep this unit clean from mineral deposits may affect operation of this unit.
3. Customer failure to follow these instructions may void the warranty.

Problem	Possible Cause	Solution
LED display won't light up	Unit not plugged in	Ensure unit is properly plugged in
	No power from power outlet	Try another power outlet
Waterless indicator is constantly on	No water in the water reservoir	Ensure the spring is secured properly to the tank allowing water to pass through to the base
	Water floater stuck	Adjust the water floater to a horizontal position and make sure it can rise up with water
LED display is on, no mist or little mist is produced	Not enough water inside the tank	Refill and reinstall the water tank
	Mist level is set too low	Adjust to maximum mist
	Preset humidity is set too low	Check if current humidity is higher than preset humidity, reset humidity to a higher level
	The base might be overfilled	Remove the tank, empty the base & replace the filled tank on the empty base
	Mineral buildup on atomizer	Feel if air comes out from the the nozzle, if yes, then clean water scale on the atomizer as instructed

Problem	Possible Cause	Solution
Tank leakage	Tank may be damaged	Check for possible cracks in the tank, replace if necessary
	Tank cap is not tightened securely	Tighten the tank cap
	Rubber ring was not installed on tank cap	Check the tank cap for rubber ring, rubber cap and spring, contact us if any is missing
	Spring stuck	Ensure the spring is secured properly to the tank allowing water to pass through to the base
Mist height is low, damping surrounding desk or floor. Condensation forms around humidifier or on windows and walls	Mist level is set too high for the room size	1. Check if the room is too humid, adjust to lower mist, 40%-60% works best 2. Open door and windows, or change to a larger room
	Air inlet is blocked	Humidifier should be placed on a hard flat surface, 2 feet above the floor, 12 inches away from the wall. Point Mist Outlet away from wall or window
	Low indoor temperature leads to liquefaction	Raise the room temperature to 25°C/77°F
Poor humidification	Mist level is set too low for the room size	1-1. Adjust to maximum mist 1-2. Close door or windows to reduce air ventilation, or change to a smaller room
	Air inlet is blocked	Humidifier should be placed on a hard flat surface, 2 feet above the floor, 12 inches away from the wall
	Low indoor temperature leads to liquefaction	Raise the room temperature to 25°C/77°F
White Dust Appears / Black coating in the base flakes off	Tap water may contain too much minerals	Replace with filtered or distilled water or use with a TaoTronics Demineralization Cartridge

Problem	Possible Cause	Solution
Strange Odor	Unit needs to be cleaned	Clean the humidifier as instructed
		Leave the empty water tank open in a cool place for 12 hours without the water tank cap attached
Strange water noise	Water is going down to the water reservoir	This is normal while it is working
Humidifier is getting too hot	Unit works for too long	Power off and place in a well-ventilated place for 10 minutes

## WARRANTY

This product is covered with TaoTronics product and labor warranty for 12 months from the date of its original purchase. You will be given a warranty extension of 18 months if the product is registered on our website ([www.taotronics.com](http://www.taotronics.com)).

Any defective part will be, at the discretion of **SUNVALLEYTEK INTERNATIONAL INC.**, repaired or replaced at no charge if the appliance has not been tampered with and has been used according to these printed directions.

If any problems occur, please contact TaoTronics support ([support@taotronics.com](mailto:support@taotronics.com)) immediately to launch a warranty claim. Specify model number and your Amazon order number. Our Consumer Service Representative will respond within 1 business day, advise you how to correct the problem yourself, or instruct you on how to return the defective unit back to us for repair or replacement.

We can only provide after sales service for products that are sold by TaoTronics or TaoTronics authorized retailers and distributors. If you have purchased your unit from a different place, please contact your seller for return and warranty issues.

## CONTACT / TAOTRONICS CUSTOMER CARE

PLEASE CONTACT US BEFORE RETURNING THIS PRODUCT TO THE STORE. EMAIL TAOTRONICS CUSTOMER CARE FOR PROBLEMS AND QUESTIONS. WE WILL RESPOND WITHIN 1 BUSINESS DAY.

**E-mail:** [support@taotronics.com](mailto:support@taotronics.com)

**Website:** [www.taotronics.com](http://www.taotronics.com)

## FCC Compliance

This device complies with Part 18 of the FCC Rules.

This equipment has been tested and found to comply with the limits for a Consumer ISM equipment, pursuant to part 18 of the FCC Rules. These limits are designed to provide reasonable protection against harmful interference in a residential installation. This equipment generates uses and can radiate radio frequency energy and, if not installed and used in accordance with the instructions, may cause harmful interference to radio communications. However, there is no guarantee that interference will not occur in a particular installation.

If this equipment does cause harmful interference to radio or television reception, which can be determined by turning the equipment off and on, the user is encouraged to try to correct the interference by one or more of the following measures:

- Reorient or relocate the receiving antenna.
- Increase the separation between the equipment and receiver.
- Connect the equipment into an outlet on a circuit different from that to which the receiver is connected.
- Consult the dealer or an experienced radio/TV technician for help

Changes or modifications not expressly approved by the party responsible for compliance could void the user's authority to operate the equipment.

[www.taotronics.com](http://www.taotronics.com)

尺寸:150\*200mm

装订成册

材质:封面128克铜版纸 内页80克书纸

Model:  
TT-AH045