

成品尺寸: 110x160mm

材质: 封面128g铜板纸 内页80克书纸

装订成册

Register to extend your 18 months warranty by visiting
taotronics.com/warranty:

support@taotronics.com

E-mail:

support@taotronics.com

MANUFACTURER

Manufacturer: Shenzhen NearbyExpress Technology Development Co.,Ltd.

Address: Floor 7, Building E, Galaxy World Phase II, Shenzhen, China

Learn more about the EU Declaration of Conformity:
<https://www.taotronics.com/pages/user-manual>

Made in China



CAN ICES-3 (B)
/NMB-3 (B)

TT-AH026_V1.6_EN



Model: TT-AH026
ULTRASONIC COOL MIST HUMIDIFIER
User Guide

CONTENTS

| | |
|--|--------------|
| STATEMENT | 01 |
| SAFETY INSTRUCTIONS | 01 |
| BEFORE USING THE HUMIDIFIER | 02/03 |
| WHEN USING THE HUMIDIFIER | 04 |
| AFTER USING THE HUMIDIFIER | 05 |
| PACKAGE CONTENTS | 06 |
| SPECIFICATIONS | 06 |
| PRODUCT DIAGRAM | 07 |
| OPERATIONS AND FUNCTIONS | 08 |
| Add water | 08 |
| Power On / Off and Mist Adjustment | 09 |
| Low Water Protection: Auto Shut-off the Humidifier | 09 |
| CLEANING AND MAINTENANCE | 10 |
| Caution | 10 |
| Daily Maintenance | 10 |
| Weekly Maintenance | 10 |
| Scale Removal Instructions | 10/11 |
| Disinfecting Instructions | 12 |
| End-Of-Season Care and Storage | 12 |
| TROUBLESHOOTING GUIDE | 13/15 |
| WARRANTY | 16 |
| TAOTRONICS CUSTOMER CARE | 16 |

STATEMENT

Thank you for purchasing a TaoTronics product that has been tested to meet our stringent quality standards. This product is covered with TaoTronics product and labor warranty for **12** months from the date of its original purchase.

Please email us with your order ID and problem or issue via support@taotronics.com, we will respond within 24 hours.

Please read the User Manual thoroughly. Clean and maintain the product as instructed. If any abnormalities occur, please refer to the Troubleshooting Guide first.

This warranty is void if the defect is caused by accidental damage, misuse, abuse, neglect, improper repair or alteration by unauthorized persons, or a failure to follow operating instructions provided with the product including adding essential oils directly into the tank and base. This warranty does not apply to normal wear and tear or commercial use.

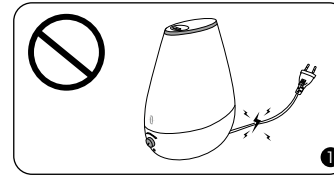
In no event shall liability exceed the purchase price paid by the purchaser of the product. Under no circumstances shall there be liability for any loss – direct, indirect or incidental – or consequential damage arising out of, or in connection with the use of the product.

SAFETY INSTRUCTIONS

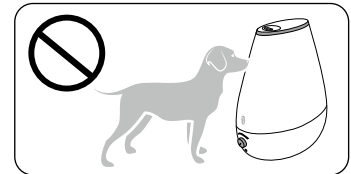
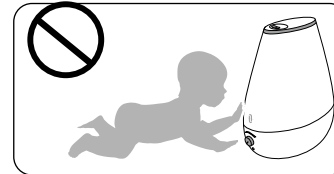
The humidifier was made with safe and environmental protection materials, it has been certified and complied with the requirement of sale regions' related regulations or laws.

IMPORTANT: Please read and save this SAFETY INSTRUCTIONS before using the device. Basic precautions should always be followed to reduce the risk of fire, electrical shock, and injury to persons or damage to the product.

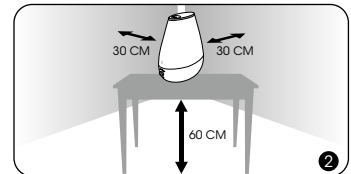
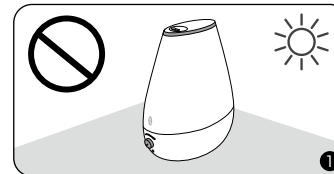
BEFORE USING THE HUMIDIFIER



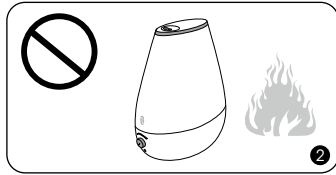
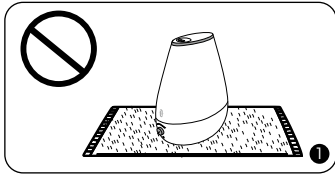
1. Please extend the cord and check any signs of damage. Do not use the humidifier if the cord has been damaged.
2. DO NOT place this humidifier in wet environments.



Please always keep the humidifier out of reach of patients & children & pet.

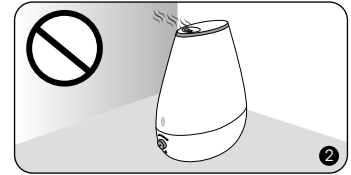
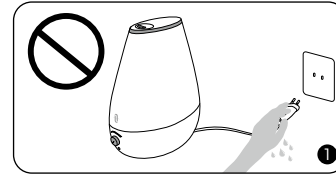


1. Please always place the unit on a smooth, flat, lint-free, non-metallic, waterproof and level surface and keep it away from direct sunlight.
2. Always place the unit 2 feet (60 cm) above the floor, 12 inches (30 cm) away from the wall, other appliances or wooden furniture.

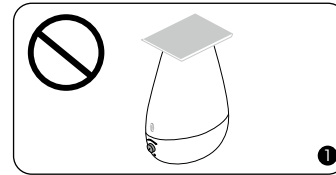


1. DO NOT place the unit on carpet, towel or wood surface, which will block the vent and may damage the unit.
2. DO NOT place the humidifier near naked flames and heat sources, such as stove tops, ovens, radiators or computers.

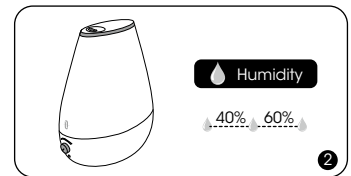
WHEN USING THE HUMIDIFIER



1. DO NOT plug the unit with wet hands.
2. DO NOT direct the mist nozzle against the wall.

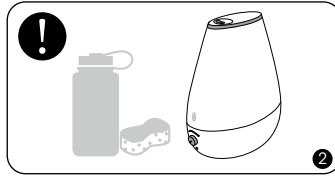
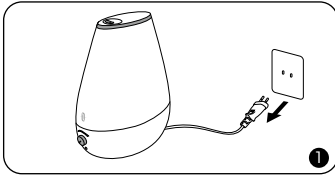


1. DO NOT use your hand or any other object to cover the nozzle while the unit is on to avoid damaging the product or causing injury.
2. DO NOT clean the unit while it is connected to a power source or while it is on.

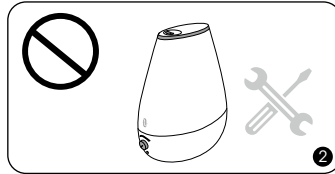
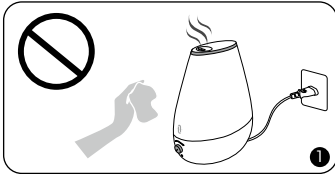


1. DO NOT move or tilt the humidifier while it is in operation.
2. The most comfortable environmental humidity is between 40%-60%. Please adjust the mist as needed.

AFTER USING THE HUMIDIFIER



1. Always disconnect from a power source by pulling the plug when not in use.
2. Humidifier requires regular cleaning. Please refer to, and follow the Cleaning and Maintenance instructions.



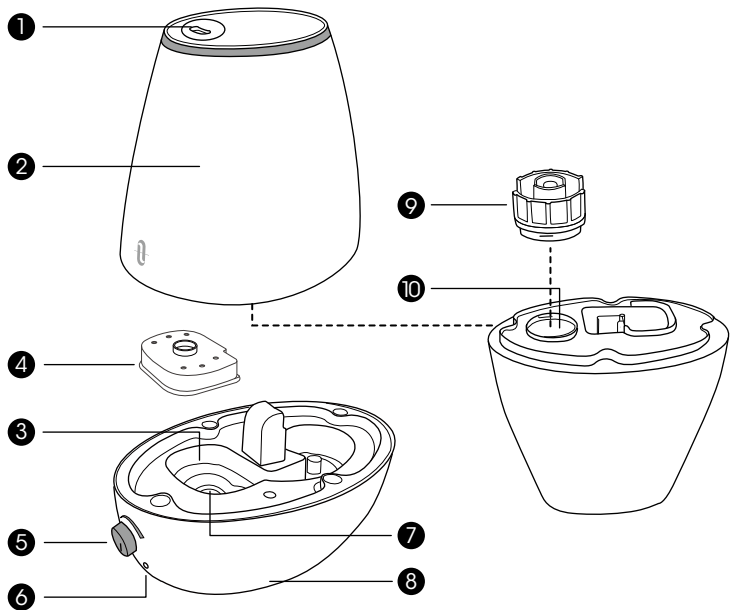
1. DO NOT clean the humidifier right after turning it off if the humidifier has been diffusing warm mist. Allow the humidifier to completely cool down before cleaning.
2. DO NOT attempt to repair or adjust any electrical or mechanical functions on this humidifier. Doing so will void your warranty.

PACKAGE CONTENTS

- 1 x TaoTronics Humidifier (Model: TT-AH026)
- 1 x Cleaning Brush
- 1 x Thank You Card
- 1 x User Manual

SPECIFICATIONS

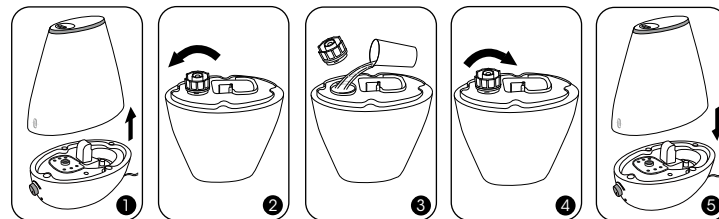
| | |
|---------------------|---|
| Model | TT-AH026 |
| Power Source | AC 100V-240V 50 / 60Hz |
| Power | 20W |
| Water Tank Volume | 1.8L / 60oz |
| Mist Output | 210mL / 7.1oz Per Hour (Max) 50mL / 1.7oz Per Hour (Min) |
| Working Environment | 5-45°C / 41-113°F ≤ 90% RH |



PRODUCT DIAGRAM

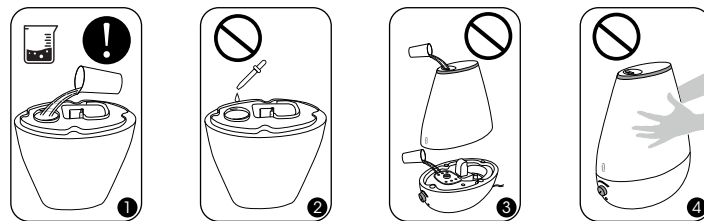
- | | |
|----------------------------|------------------|
| 1. Nozzle | 6. LED Indicator |
| 2. Water Tank | 7. Atomizer |
| 3. Water Reservoir | 8. Base |
| 4. Detachable Water Fender | 9. Tank Cap |
| 5. Control Knob | 10. Water Inlet |

OPERATIONS AND FUNCTIONS

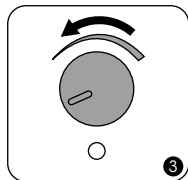
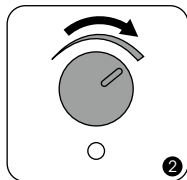
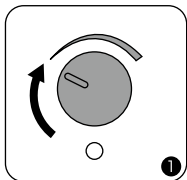


Add water

1. Turn the water tank upside down. Remove the tank cap and fill the tank with clean and cool water only.
2. Attach the tank cap and place the tank back onto the base. Please make sure it fits together securely so that water can go from the tank to the reservoir.



1. If tap water is too hard, it is recommended to use filtered or distilled water to avoid white dust. **DO NOT** use hot water.
2. **DO NOT** add any essential oils or medicinal tablets into the water tank.
3. **DO NOT** add water into the base or through nozzle.
4. **DO NOT** move the humidifier while the water tank is full of water to avoid leakage or base overflowing.



Power On / Off and Mist Adjustment

Plug the power cord into a wall socket. Now the humidifier is ready for use.

1. Rotate the Control Knob clockwise to turn on the unit with a click. The LED indicator will stay solid yellow.
2. Keep rotating the Control Knob clockwise to increase the mist level.
3. Rotate the Control Knob counterclockwise to turn off the unit with a click.

The most comfortable environmental humidity is between 40%-60%. Please adjust the mist as needed.

Low Water Protection: Auto Shut-off the Humidifier

When there is not enough water inside the water reservoir, the humidifier will stop misting and the LED indicator will become red. It is designed for safety to prevent the humidifier from possibly overheating and damaging the atomizer.

CLEANING AND MAINTENANCE



Caution

1. DO NOT submerge the base in water.
2. Make sure water does not enter the base through the air outlet, air inlet, or the control knob.
3. DO NOT wash any part of this humidifier in dish washer which will damage the humidifier and void the warranty.

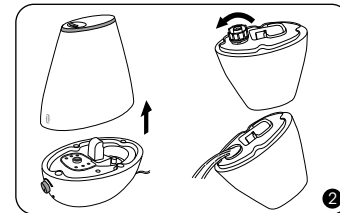
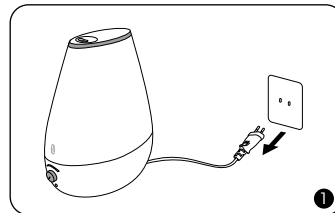
Daily Maintenance

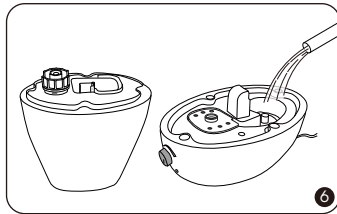
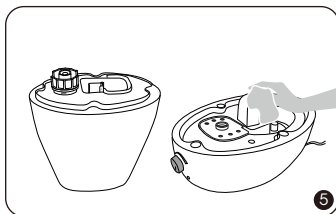
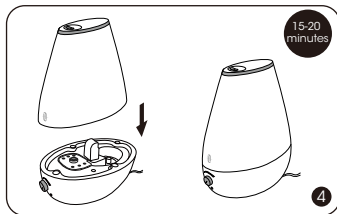
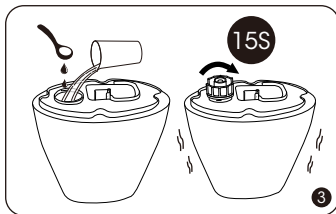
Turn the humidifier, unplug it from the power source. Drain water from the tank, reservoir and base.

Weekly Maintenance

1. To properly clean your humidifier, we recommend you to remove scale and disinfect the humidifier separately.
2. DO NOT mix vinegar and bleach solutions together. Do not use more than 1 tsp. of bleach per gallon of water to avoid damaging your humidifier.
3. Please make sure the sealing ring on the tank cap is installed properly after cleaning to avoid water leakage.

Scale Removal Instructions





1. Turn off and unplug the humidifier.
2. Remove the water tank from the base. Remove the tank cap. Make sure that the white sealing ring does not come off. Drain water from the water tank and base. Remove any accessories and set aside.
3. Fill the water tank half full. Add in 1 teaspoon of undiluted distilled white vinegar. Attach the tank cap and shake for 15 seconds.
4. Place the tank onto the base. The vinegar solution will enter the water reservoir to loosen mineral buildup (scale) on the atomizer, water floater and the bottom of the water tank. Set still for 15-20 minutes.
5. Uncap the tank cap and drain the solution. Wipe the atomizer, floater and detachable water fender with a soft cloth to remove loosened mineral deposits.
6. Rinse both the water reservoir and water tank until the smell of vinegar (for scale removal) or bleach solution (for disinfecting, see below) is gone.

Disinfecting Instructions

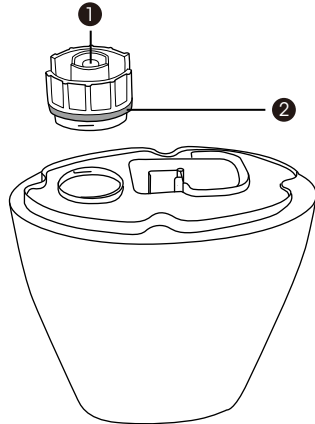
1. Follow steps 1-2 of the previous section on scale removal.
2. Fill the water tank half full. Add in ½ tsp of bleach. Place the tank cap back on. Swish the solution around in tank. Place the tank on the base. The bleach solution will enter and disinfect the water reservoir as well as the other components. Set still for 15-20 minutes.
3. Follow steps 4-6 of the previous section on scale removal to complete disinfecting the humidifier.

End-Of-Season Care and Storage

1. Follow the cleaning instructions when the humidifier will not be used for at least one week, or at the end of the season. Remove any accessories used with the humidifier and allow the humidifier and accessories to dry completely before storing.
2. DO NOT store with water inside the base, water reservoir, or tank.
3. Pack the unit safely and store in a cool, dry location.

TROUBLESHOOTING GUIDE

1. If the information listed in the troubleshooting guide can't solve your problem, please email us for help.
2. Failure to keep this unit clean from mineral deposits may affect operation of this unit.
3. Customer failure to follow these instructions may void the warranty.



1. Spring
2. Sealing ring

| Problem | Possible Cause | Solution |
|-------------------------|---------------------------------|---|
| LED indicator is off | Unit not plugged in | Ensure unit is properly plugged in |
| | No power from power outlet | Try another power outlet |
| | Did not turn on the unit | Rotate the Control Knob clockwise to turn on the unit |
| LED indicator stays red | No water in the water reservoir | Ensure the ❶ Spring is secured properly to the tank bottom allowing water to pass through to the base |

| | | |
|---|--|--|
| The LED Indicator is yellow but no mist or little mist is produced | Not enough water inside the tank | Refill and reinstall the water tank |
| | Mist level is set too low | Adjust to maximum mist |
| | Mineral buildup on the atomizer | Feel if any air comes out from the nozzle. If yes, then clean water scale on the atomizer as instructed |
| | The base might be overfilled | Remove the tank, empty the base and place the filled tank on the empty base |
| Tank leakage | Tank may be damaged | Check for possible cracks in the tank, replace if necessary |
| | Tank cap is not tightened securely | Tighten the tank cap |
| | ❶ Spring stuck | Ensure the ❶ spring is properly secured to the tank bottom allowing water to pass through to the base. |
| | ❷ Sealing ring was not installed on tank cap | Install the ❷ sealing ring on the tank cap, please contact us if it is missing |
| Mist height is low, damping surrounding desk or floor. Condensation forms around humidifier or on windows and walls | Mist level is set too high for the room size | <ol style="list-style-type: none"> 1. Check if the room is too humid and adjust to lower mist. 40%-60% works best 2. Open door and windows, or change to a larger room |
| | Air inlet is blocked | Humidifier should be placed on a hard flat surface, 2 feet above the floor, 12 inches away from the wall. Point nozzle away from wall or window |
| | Low indoor temperature leads to liquefaction | Raise the room temperature to 25°C / 77°F |

| | | |
|--|--|--|
| Poor humidification | Mist level is set too low for the room size | <ol style="list-style-type: none"> 1. Adjust to maximum mist 2. Close door or windows to reduce air ventilation, or change to a smaller room |
| | Air inlet is blocked | Humidifier should be placed on a hard flat surface, 2 feet above the floor, 12 inches away from the wall |
| | Low indoor temperature leads to liquefaction | Raise the room temperature to 25°C / 77°F |
| White dust appears or the black coating on the base flakes off | Tap water may contain too much minerals | Replace with filtered or distilled water or use a TaoTronics Demineralization Cartridge |
| Strange Odor | Clean the unit | <ol style="list-style-type: none"> 1. Clean the humidifier as instructed 2. Leave the empty and opened water tank in a cool place for 12 hours without the tank cap attached |
| Strange water noise | Water is going down to the water reservoir | This is normal while it is working |
| Humidifier is getting too hot | Unit works for too long | Power off and place in a well-ventilated place for 10 minutes |

WARRANTY

This product is covered with TaoTronics product and labor warranty for 12 months from the date of its original purchase. You will be given a warranty extension of 18 months if the product is registered on our website (www.taotronics.com).

Any defective part will be, at the discretion of **SUNVALLEYTEK INTERNATIONAL INC.**, repaired or replaced at no charge if the appliance has not been tampered with and has been used according to these printed directions.

If any problems occur, please contact TaoTronics support (support@taotronics.com) immediately to launch a warranty claim. Specify model number and your Amazon order number. Our Consumer Service Representative will respond within 1 business day, advise you how to correct the problem yourself, or instruct you on how to return the defective unit back to us for repair or replacement.

We can only provide after sales service for products that are sold by TaoTronics or TaoTronics authorized retailers and distributors. If you have purchased your unit from a different place, please contact your seller for return and warranty issues.

CONTACT / TAOTRONICS CUSTOMER CARE

PLEASE CONTACT US BEFORE RETURNING THIS PRODUCT TO THE STORE.
EMAIL TAOTRONICS CUSTOMER CARE FOR PROBLEMS AND QUESTIONS.
WE WILL RESPOND WITHIN 1 BUSINESS DAY.

E-mail: support@taotronics.com

Website: www.taotronics.com

FCC Compliance

This device complies with Part 15 of the FCC Rules. Operation is subject to the following two conditions:

- (1) This device may not cause harmful interference, and
- (2) This device must accept any interference received, including interference that may cause undesired operation.



WEEE Compliance

Correct Disposal of This Product (Waste Electrical & Electronic Equipment)

(Applicable in countries with separate collection systems)

This marking on the product, accessories or literature indicates that the product and its electronic accessories should not be disposed of with other household waste at the end of their working life. To prevent possible harm to the environment or human health from uncontrolled waste disposal, please separate these items from other types of waste and recycle them responsibly to promote the sustainable reuse of material resources. Household users should contact either the retailer where they purchased this product, or their local government office, for details of where and how they can take these items for environmentally safe recycling. Business users should contact their supplier and check the terms and conditions of the purchase contract. This product and its electronic accessories should not be mixed with other commercial wastes for disposal.