



E-mail :
support@taotronics.com

MANUFACTURER

Manufacturer: Shenzhen NearbyExpress Technology Development Co.,Ltd.
Address: Floor 7, Building E, Galaxy World Phase II, Shenzhen, China

Learn more about the EU Declaration of Conformity:
<https://www.taotronics.com/pages/user-manual>



TT-AH019_V2.6_EN

Model: TT-AH019
TaoTronics Ultrasonic Cool Mist Humidifier
User Guide

Features

- Automatic humidity level setting
- 3 level adjustable mist
- Built-in timer
- Water filter to remove water bacteria and bad odor
- Low water protection
- Voice control (must work with Alexa device) & App control

Package Contents

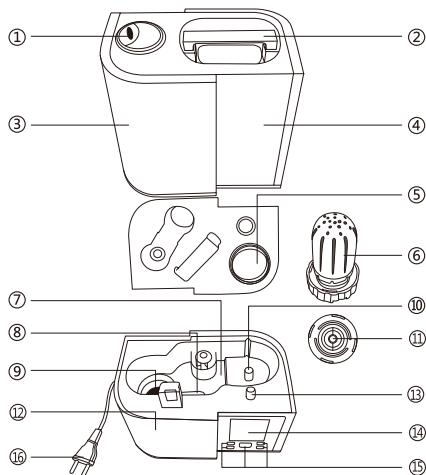
- 1 x TaoTronics Cool-Mist Humidifier (Model: TT-AH019)
- 1 x User Manual

Specifications

Model	TT-AH019
Voltage	US/CA: AC 120V / 60Hz UK: AC 230V / 50Hz
Power	30W
Water Tank Volume	4L
Working time	15 hr Max.
Max Humidity Increase	300±30mL/h
Humidifying Efficiency Level	B
Noise Level	≤38dB(A)
Protection Type	II

Product Diagram

- ① Nozzle
- ② Handle
- ③ Tank panel
- ④ Water tank
- ⑤ Water intake
- ⑥ Filter
- ⑦ Water sink
- ⑧ Cleaning brush
- ⑨ Transducer
- ⑩ Fixer for floater
- ⑪ Floater
- ⑫ Base
- ⑬ Indicator
- ⑭ LED display
- ⑮ Function buttons
- ⑯ Power cable



How to Use

Please put this unit in your house for half an hour before first use without any operation, especially when the outdoor temperature is below 41°F/5°C.

Important

- Do not turn on the unit with no water in the tank, it will cause serious damage
- Do not touch the water in the sink or any component of the sink while the unit is working
- Do not put corrosive liquids in the tank
- To prevent fog and mildew, please use distilled or purified water.

Filling Water

1. Remove the water tank from the base
2. Twist to loosen the switch of the filter on the bottom of the water tank and fill water in the tank; then twist the filter back on
3. Put the tank back on the base

Important: Do not fill the water tank via the nozzle

Power On/Off

1. Press the On & Off / Wifi Button once to power on the unit. When the unit is on:
 - The LED display will be on
 - The unit starts to work with medium level mist output
 - The fan starts blowing wind at the same time
2. Press the On & Off / Wifi Button again to turn off the unit:
 - The LED display will be off
 - All but the fan will be off
 - The fan will be off 5 minutes later

Mist Level

The TT-AH019 Cool-Mist Humidifier provides 3 levels of mist outputs. Simply press the "MIST +/-" button to choose the mist level you want.

Nightlight Mode / Sleep Mode

1. Power on the unit
2. Press the "NIGHTLIGHT/SLEEP" button to enter Nightlight Mode
3. Press the "NIGHTLIGHT/SLEEP" button again to turn off the Nightlight Mode and enter Sleep Mode. LED indicator will show sleep mode icon only
4. In Sleep Mode, the unit will switch to low mist output. You can then manually adjust the mist level
5. Press the "NIGHTLIGHT/SLEEP" button again to go back to Normal Mode

Setting Timer

The timer can be set from 1 – 24 hours. The unit will stop working once the timer is up.

1. While the unit is working, press the "TIMER" button to enter Timer Setting Mode
2. On the display you will see "01:00". This means the timer is set to 1 hour
3. Keep pressing the "TIMER" button and the number of hours will increase
4. Do not press any button for 3 seconds (with the time icon on the display flashing), and then the timer will be set to the hour on display
5. Countdown will start once the timer is set
6. When time is up, the unit will automatically turn off

Humidity Level

You can set humidity level from 30% to 95% RH.

1. Press the "HUMIDISTAT" button to enter the setting of constant humidity
2. Keep pressing the button until you find the humidity level you want. Leave the unit for 3 seconds (with the humidity icon flashing on the display), then the humidity level will be set.
3. If humidity level of your room is higher than your setting, the humidifier will turn off automatically

Low Water Protection

When water level drops below minimum, a water level warning icon will show on the display. When this happens, the unit will automatically turn off to protect itself.

Cleaning the Water Tank

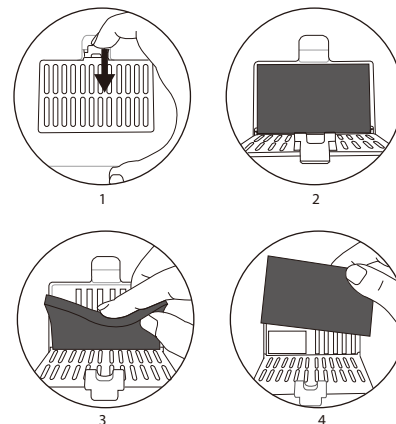
1. Fill the water tank half full, and add in 100ml white vinegar. Run the humidifier for 5-10 minutes to allow the vinegar/water mixture to work through and loosen up the gunk.
2. Turn off the humidifier, unplug it, and drain the water. Then wipe out the inside of the humidifier with the included cleaning brush.
3. Use a soft cloth to wipe down the outside of the machine to remove any fingerprints, smudges, etc. The cloth can be dampened with water, or you may lightly spray it with a bit of gentle cleaner or vinegar/water solution.

4. Clean the humidifier once a week.

Cleaning the Base / Transducer / Filter

Please be careful when cleaning the unit. Any water splashing inside the base may damage the unit.

1. Make sure the unit is turned off
2. Empty the water from the base
3. Use a towel to wipe clean the base. Do not use organic solvent like alcohol or vinegar to clean the base
4. To clean the transducer, pour some white vinegar on the transducer
5. Fill a small amount of warm water and wait for 3 to 5 minutes
6. Clean the transducer by using the included brush
7. Rinse clean the transducer
8. To clean the filter, simply dip the filter in white vinegar for 10 minutes and rinse clean with water
9. Clean the dustproof sponge once a month.



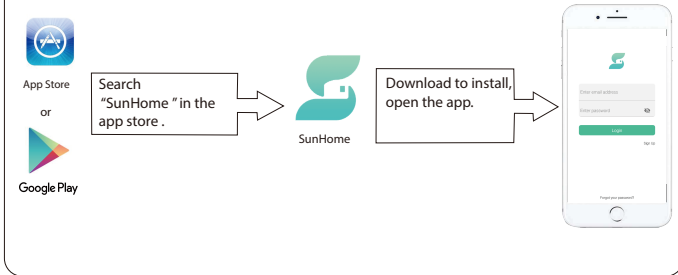
Caution

- Please do not dismantle the product by yourself, always ask professional electrician or authorized technician for repairing
- If you smell bad odor or anything unusual, please turn off the unit immediately
- Please do not remove the power plug with wet hands as it may cause electrical shock
- It is not a toy. Keep away from children
- Do not place this unit on sloping or uneven surface to avoid water leaking or component damage
- Do not put this unit near any heat source or under direct sunlight
- Keep away from other electric appliances that are prone to humidity damage
- Using the unit in a space larger than 150m³ will reduce its effectiveness
- Regularly clean the unit if it won't be used for a long period; store in a dry and shady place
- We recommend set the humidity level between 40% and 55%

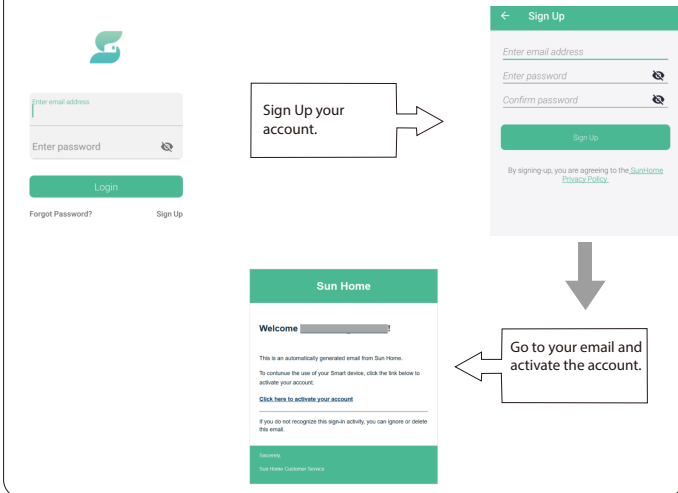
Smartphone App Control

How to use

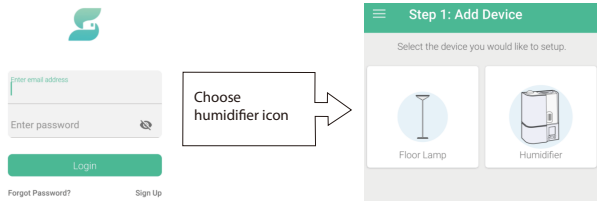
1. Search and download "Sun Home" App



2. Sign Up and Activate Your Account



3. Login and Follow the Instructions to Connect



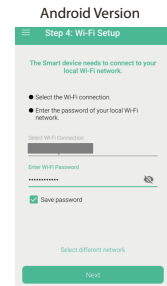
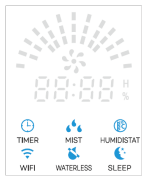
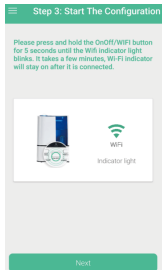
Choose humidifier icon

Floor Lamp Humidifier

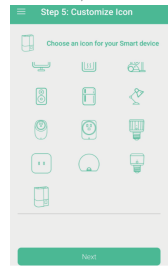


Power Up humidifier

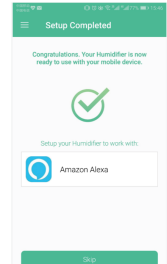
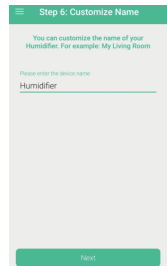
Press and hold the ON & OFF/WIFI button for 5s in the humidifier to start configuration



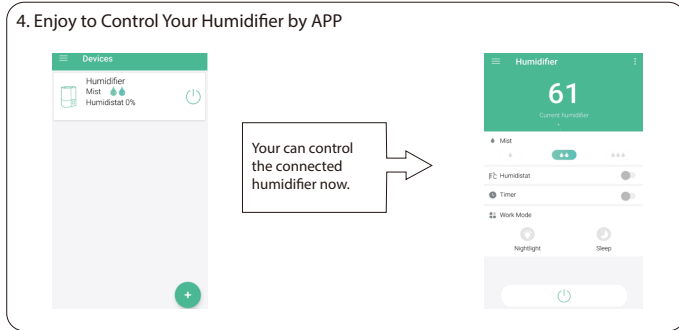
Open the Wifi and enter your Wifi account & password



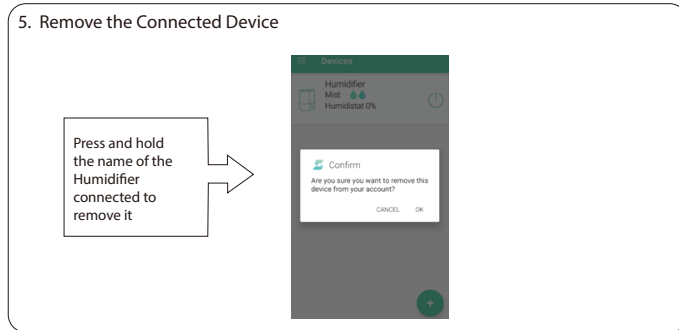
Name your humidifier, please use the same name you set to the humidifier when you voice control it.



4. Enjoy to Control Your Humidifier by APP



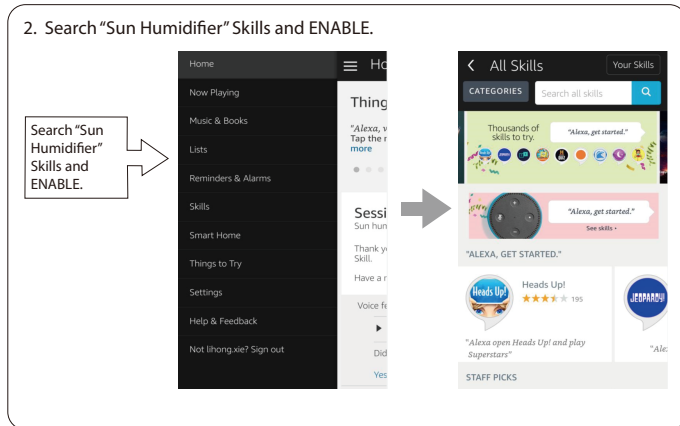
5. Remove the Connected Device

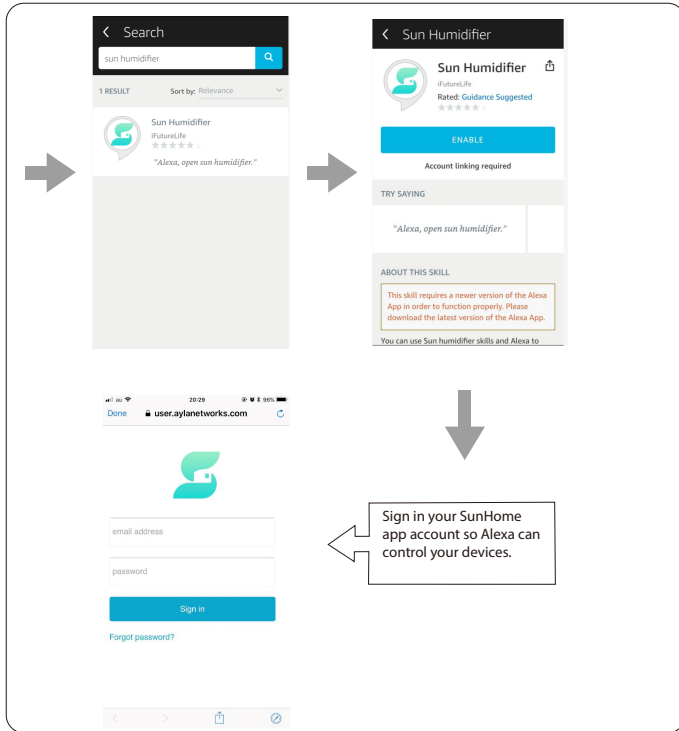


· Voice Control

Follow the Smartphone Control section above to configure the humidifier with the WiFi router, then set up your Alexa/Google Home as below to command and use the humidifier through voice control.

Voice Control by Alexa





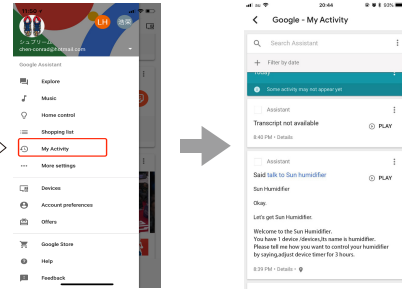
Sign in your SunHome app account so Alexa can control your devices.

Link to 'Sun Home' app account , then return to Amazon Alexa app and talk to Echo "talk to sun humidifier".

Feedback from Echo	Action
Welcome to the Sun Humidifier Skill. You have # online devices , their name of which are " + dev_name + " .	Choose the humidifier you want to connect, then you can control it by voice.
There is no available humidifier on your account. Please confirm whether your humidifier is online, and then open Sun Humidifier skill.	Please confirm whether your humidifier is online, and then open Sun Humidifier skill.
You must have a Sun Home account to use Sun Humidifier skill. Please use the Alexa app to link your Amazon account with your Sun Home Account.	Please confirm if you already have a Sun Home account.



You can find all the records & feedback from Google Home in "My Activity"



Voice Control by Google Home

Before you start, please make sure that:

1. Connect the humidifier to the SunHome app & give your humidifier a descriptive name;
2. You have a Google assistant enabled device (i.e. Google Home) & setup it well.

Download & install Google Home app on your smart phone

Create an account and sign in.

Sign in your SunHome app account so Google home can control your devices.

Welcome Home

Please say to Google home: "OK Google, Talk to Sun Humidifier", then open Google Home APP and click on "Link"

Voice Command to Control the Work with Alexa Device

You should have an Alexa speaker (Amazon Echo/Echo dot or like product, sold separately), or you can use App like "Reverb" for voice command;

- In the third-party application, we have named this device. Such as "apple".
- After linking a third-party application account to an Amazon account. We can use voice command Device.

Control Power command	Alexa, turn on {device name}	Alexa, turn {device name} on
	Alexa, turn off {device name}	Alexa, turn {device name} off
Adjust Mist command	adjust {device name} to maximum/high mist	set {device name} to maximum/high mist
	adjust {device name} to medium mist	set {device name} to medium mist
	adjust {device name} to small/minimum/low mist	set {device name} to small/minimum/low mist
Adjust Work mode command	adjust {device} to normal mode	set {device} to normal mode
	adjust {device} to nightlight mode	set {device} to nightlight mode
	adjust {device} to sleep mode	set {device} to sleep mode

Note:

1. Press and hold the On & Off / Wifi Button for 5 seconds to enter wifi configuring in standby or working mode. The wifi indicator will keep flashing when configuring and stay solid on once configured successfully.
2. During wifi configuration, press and hold the On & Off / Wifi Button for another 5 seconds to stop the configuration.
3. When successfully configured, press the On & Off / Wifi Button to turn off the unit with wifi successfully connected.
4. The Wifi indicator will turn off when enter sleep mode after a successful wifi configuration or during the configuring process without affecting the configuring status.
5. Wifi configuration is disabled in sleep mode.

Troubleshooting Guide

Problem	Possible Causes	Solution
LED display is off	No power supply	Connect power supply
	Forgot to press ON button	Switch on
LED display is on, but no mist or wind	No water in water tank	Fill water into water tank
	Too much water in the water sink	Remove some water from the water sink and close the cover of water tank tightly.
LED display and the wind are on but no mist	Mist output is set to the lowest level	Adjust the mist output
LED display is on and the water tank has water, but it shows there is no water	Floater is jammed	Stir the floater to keep it flowing smoothly
Bad smell	New unit	Take out water tank, open cover. Put it in the room without any operation for at least half an hour
	Dirty water or the water has extended its storage period.	Clean water tank, fill in clean water

The mist output is too small	Water scale on the transducer	Clean the transducer
	Dirty water or the water has extended its storage period	Clean water tank, change to fresh and clean water
	The water is too cold	Add some warm water inside
Strange noise	Lack of water	Fill water tank with water
	Placed on an unstable surface	Move the unit to a stable flat surface
Water doesn't go down to the sink	Blocked by filter	Clean the filter
Mist overflows from the tank or around the nozzle	Gap between the water tank and the base or gap between the nozzle and the tank	Put some water around the surface of the water sink; Wet the nozzle before using
Display shows blinking digital 30% RH	Current humidity level is lower than 30%	Just keep it on
Display shows Sd (Sensor defect)	Poor contact for humidity sensing element	Reinstall it
	Sensor damaged	Replace it

The water tank leaks	<p>The unit is placed on tilted surface</p> <p>The water tank is not correctly installed in the unit</p> <p>The water tank cap is not tightly closed</p> <p>The water tank is lifted from the base when working</p>	<p>Place the unit on a flat surface</p> <p>Install the unit as instructed by this User Manual</p> <p>Tightly close the tank cap</p> <p>Please do not separate water tank from the base when the unit is working</p>
----------------------	---	---

Warranty

This product is covered with TaoTronics product and labor warranty for 12 months from the date of its original purchase. If manufacturing defects occur, please contact TaoTronics support (support@taotronics.com) immediately to launch a warranty claim. We will instruct you on how to return the defective unit back to us for repair or replacement.

No return will be accepted without seller authorization.

Contact

E-mail: support@taotronics.com

Website: www.taotronics.com

Statement

We can only provide after sale service for products that are sold by TaoTronics or TaoTronics authorized retailer and distributors. If you have purchased your unit from a different place, please contact your seller for return and warranty issues.

FCC Compliance

This device complies with Part 15 of the FCC Rules. Operation is subject to the following two conditions: (1) this device may not cause harmful interference, and (2) this device must accept any interference received, including interference that may cause undesired operation.



WEEE Compliance

Correct Disposal of This Product (Waste Electrical & Electronic Equipment) (Applicable in countries with separate collection systems)

This marking on the product, accessories or literature indicates that the product and its electronic accessories should not be disposed of with other household waste at the end of their working life. To prevent possible harm to the environment or human health from uncontrolled waste disposal, please separate these items from other types of waste and recycle them responsibly to promote the sustainable reuse of material resources. Household users should contact either the retailer where they purchased this product, or their local government office, for details of where and how they can take these items for environmentally safe recycling. Business users should contact their supplier and check the terms and conditions of the purchase contract. This product and its electronic accessories should not be mixed with other commercial wastes for disposal.

TT-AH019 说明书设计

尺寸：110 x 145 mm

装订成册

材质：封面128克铜版纸 内页80克书纸

**提示：请勿擅自改动设计版式或装订方式。
材质有特殊要求者/任何问题请及时沟通
修改，谢谢。**