

**Homech**

**Homech**  
www.homech.net

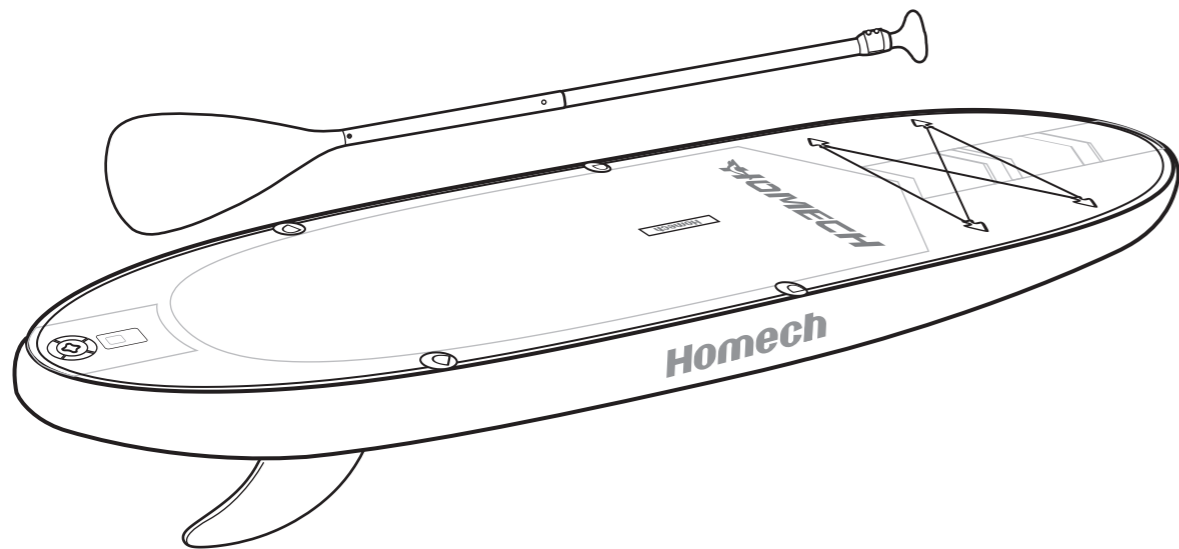
# Inflatable Stand Up Paddle Board

HM-HF008

**User Manual**



**THANK YOU FOR CHOOSING HOMECH INFLATABLE  
STAND UP PADDLE (SUP) BOARD. BE SAFE AND HAVE FUN!**



<b>IMPORTANT SAFETY INSTRUCTIONS</b>	<b>01</b>
<b>KNOWING YOUR SUP BOARD</b>	<b>03</b>
<b>GETTING STARTED</b>	<b>05</b>
<b>STORAGE AND MAINTENANCE</b>	<b>11</b>
<b>TROUBLESHOOTING</b>	<b>13</b>

# CONTENTS



# IMPORTANT SAFETY INSTRUCTIONS

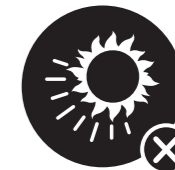
Familiarize yourself with the features and ask for professional training if you are inexperienced in handling this type of board. For your full enjoyment it is important to follow proper safety procedures and rules of the waterway that apply to all SUPs.



Always wear a Coast Guard approved Personal Flotation Device (PFD).



Never go boarding in severe conditions. Beware of offshore winds and currents.



DO NOT leave the board exposed to direct sunlight for extended periods of time.



## WARNING

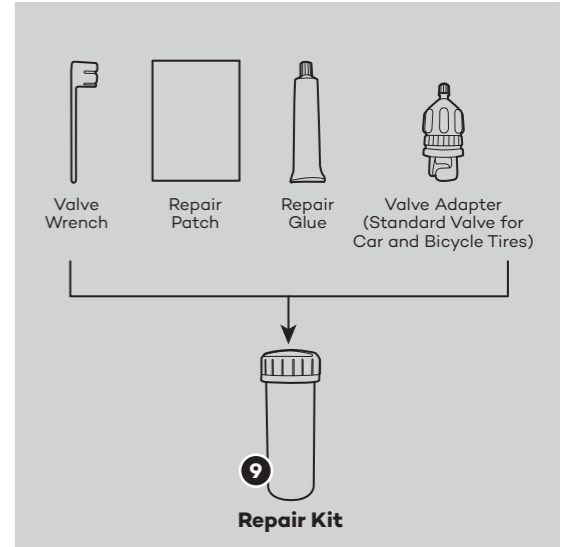
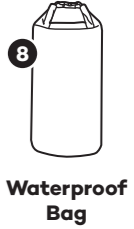
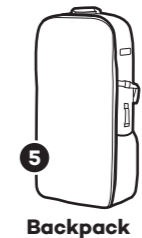
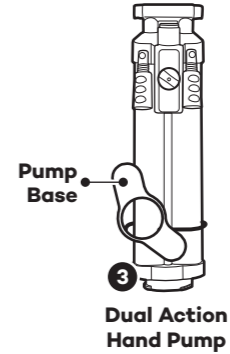
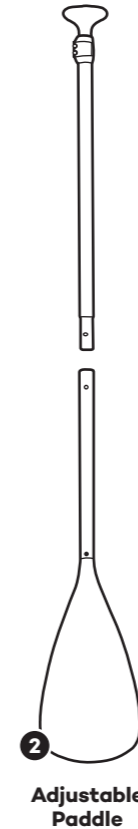
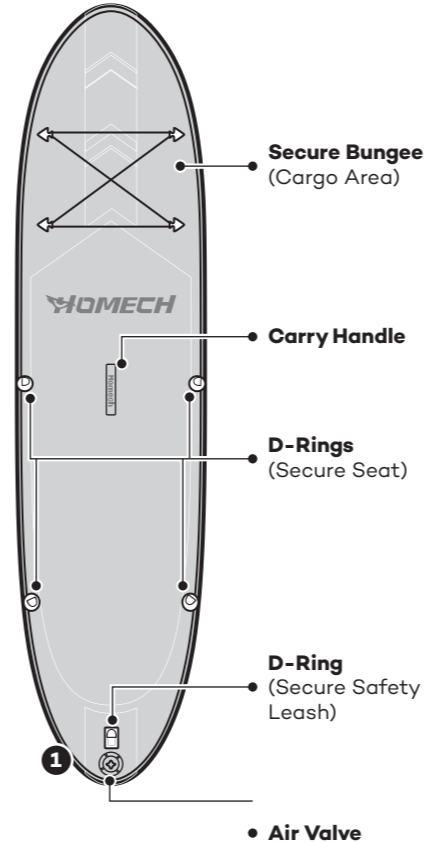
- Keep away from fire.
- **DO NOT** use around sharp objects.
- Never allow minors to use without adult supervision.
- **DO NOT** paddle the board while impaired or under the influence of intoxicants such as alcohol or drugs.
- **DO NOT** use the board for anything other than its intended use.
- Always exercise safe boarding and do not attempt actions which are beyond your skills or ability.
- Never paddle the board after sunset, before dawn or at any time in poor lighting.
- Before every use, carefully check for any sign of wear or leakage to ensure the SUP is in good condition. **DO NOT** use if any damage is found.
- **DO NOT** use high pressure air pump to inflate. Inflate according to the rated pressure or it will cause over inflation and/or an explosion.
- Check your local regulations to familiarize yourself with any rules or regulations that may apply to water sports and watercrafts.
- We recommend that you always paddle with a partner -it's safer and more fun!

**READ AND SAVE THESE INSTRUCTIONS**



# KNOWING YOUR SUP BOARD

Unpack and check that all accessories are inside.



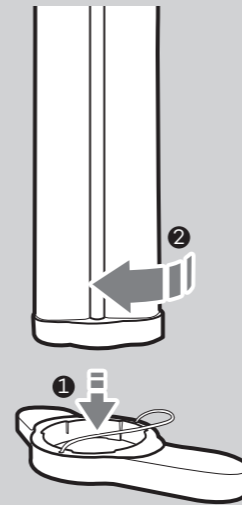


# GETTING STARTED



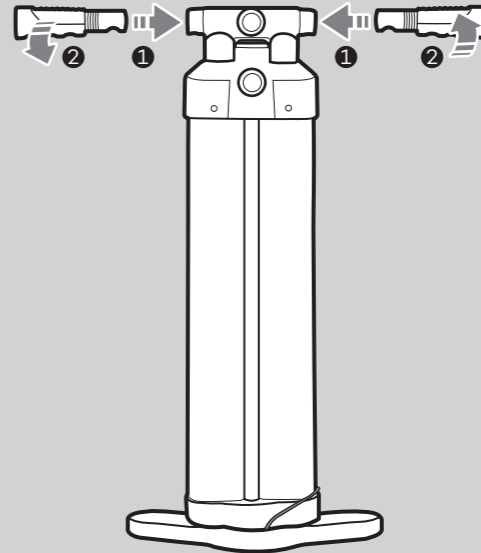
## Dual Action Hand Pump

1.



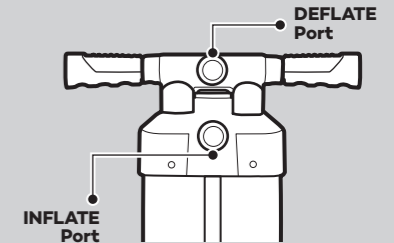
**Assembly of Base**  
Align and twist to lock.

2.

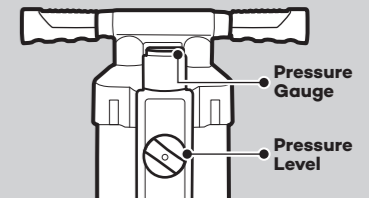


**Assembly of Handles**  
Screw in two handles.

## Use of Pump



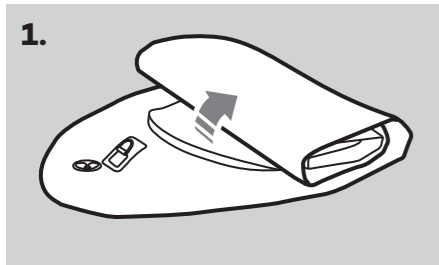
**Inflating / Deflating**  
Screw the pump hose onto the INFLATE / DEFLATE port.



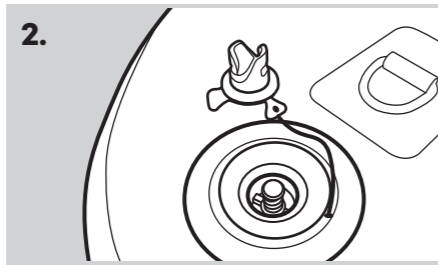
**Adjusting Pressure Level**  
• 0-2psi -> Level 1 • 3-6psi -> Level 2  
• 7-12psi -> Level 3



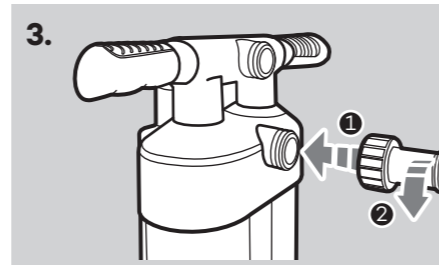
## Inflating the SUP Board



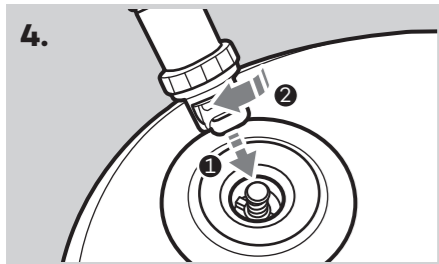
1. Unroll the paddle board on level ground with the air valve facing up.



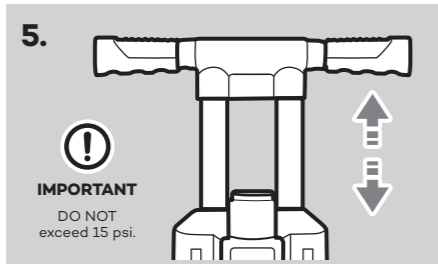
2. Remove the valve cap and ensure the pin is in the Up position.



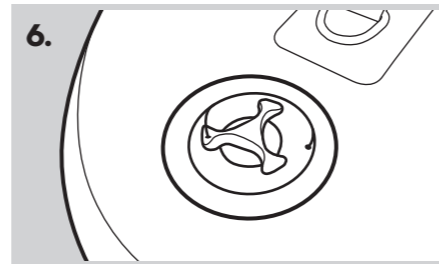
3. Screw the pump hose onto the **INFLATE** port.



4. Insert the other end to the air valve and twist clockwise.



5. Pump the board with steady strokes until the pressure gauge reads 10-12psi.

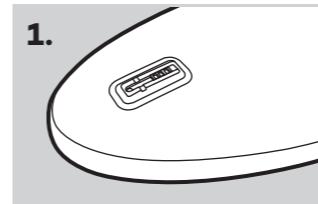


6. Screw on the cap. (It is normal that you will hear a small burst of air when removing the hose.)

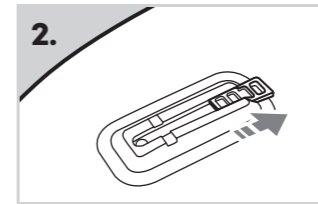


## Installing the Fin

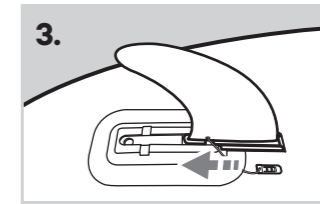
⚠ Make sure the fin is secured before paddling.



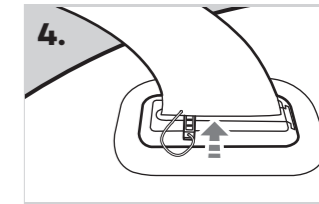
1. Flip the board upside down.



2. Remove the anti-deformation gasket.

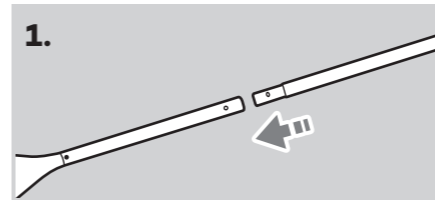


3. Slide the fin into the notched section.

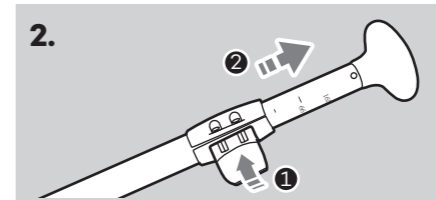


4. Lock the fin by inserting the clip into the hole.

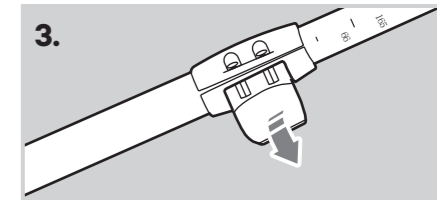
## Assembling the Paddle



1. Connect the two paddle shafts until they click into place.



2. Open the quick-lock, adjust to desired height.



3. Lock into place by pressing the quick-lock.

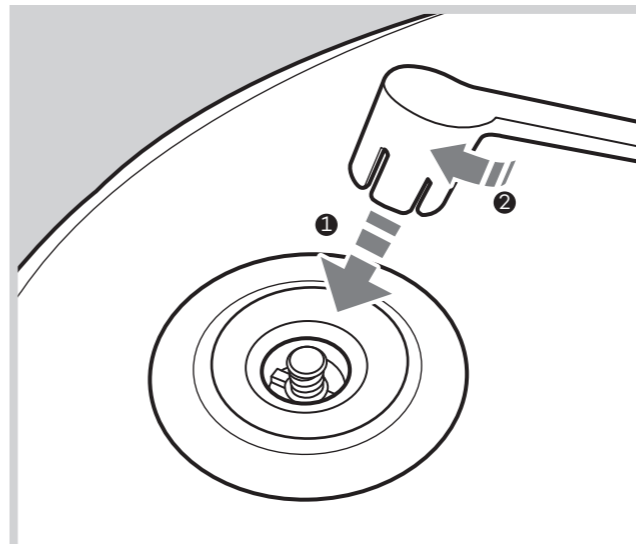


### Attaching the Safety Leash

For your own safety when paddling, remember to attach the safety leash to the front D-Ring and fasten to your ankle.



### Repairing Leaks & Tears



**Leaking Valve**  
Screw tight with valve wrench.



Repair Patch



Repair Glue

#### Tears (< 10 mm)

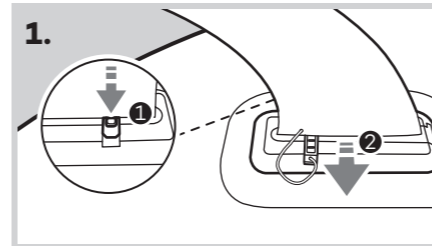
1. Deflate the board completely.
2. Locate the leak. Wipe clean and dry.
3. Cut a suitable size of patch.  
Apply glue to the plain side.
4. Apply glue to the leak on board, wait for 1 minute.
5. Attach over the tear and hold for 2 minutes.
6. Wait 48 hours before re-inflating.



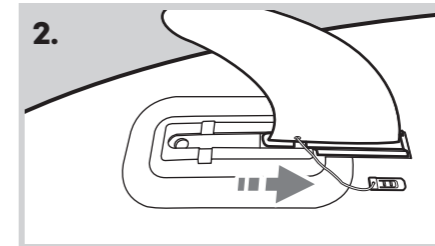
# STORAGE AND MAINTENANCE

For storage, you may roll up the board and store with all accessories in the included backpack.

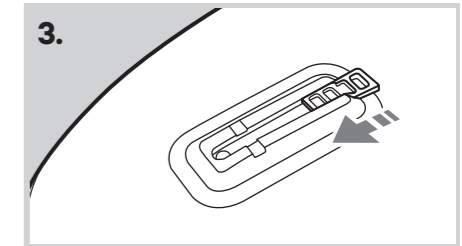
## Disassembling the Fin



1. Press down to remove the clip.

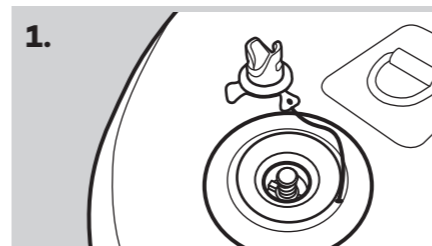


2. Slide the fin out of its base.

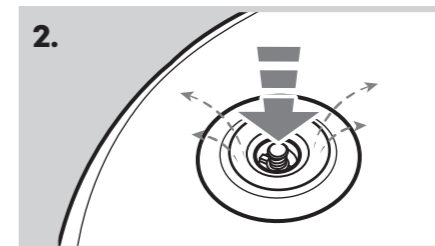


3. Insert the anti-deformation gasket.

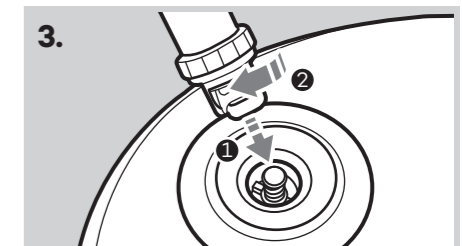
## Deflating the SUP Board



1. Remove the valve cap.



2. Press down on the pin to deflate.



3. Exhaust the remaining air by connecting the pump hose to the air valve.





# TROUBLE-SHOOTING

The following troubleshooting guide addresses the most common problems. If problems persist, feel free to contact our Customer Support at [support@homech.net](mailto:support@homech.net).



**Which direction should be the “Homech” logo face when paddling?**

It is easier to paddle with the logo facing towards the front of the board. This allows the water to slip more easily past the blade as it moves through the water.

**Can I keep my board inflated?**

If you choose to leave the board in direct sunlight for an extended period of time it is recommended that you deflate the board to prevent over-expansion as this is not covered under the warranty.

**Winter is here, how do you suggest I store my board?**

We recommend storing it completely dry, rolled up in the bag, stored in a location away from the elements such as a garage or shed.

**How should I clean my board?**

Soapy water should do the trick! We also like to use mineral spirits for those tougher stains.

**Do I have to wear a lifejacket?**

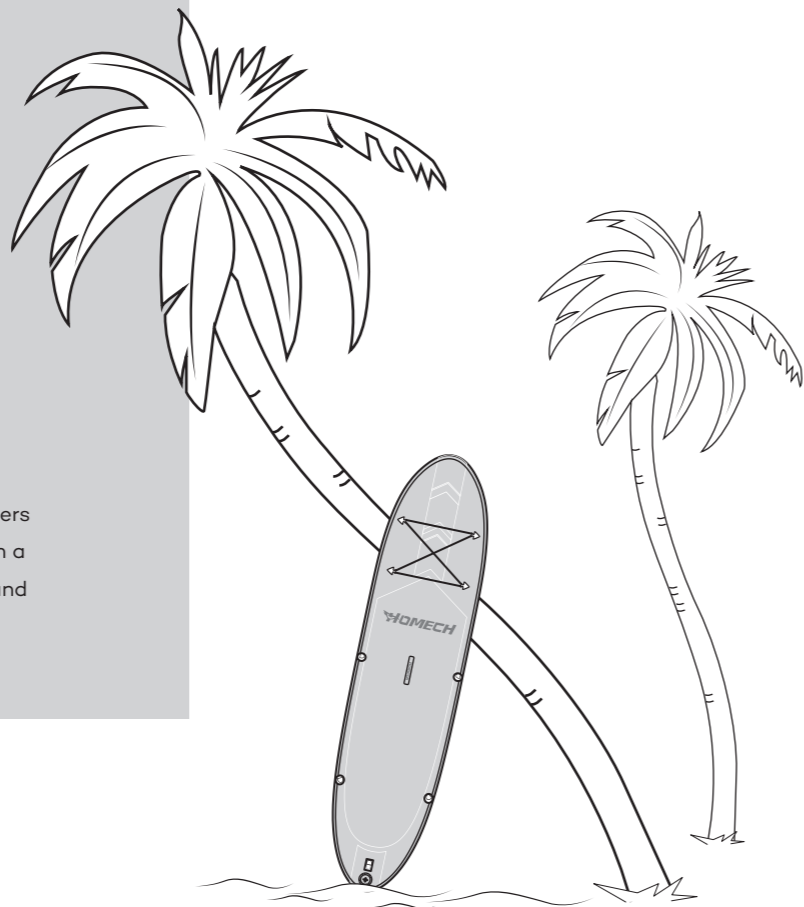
The US Coast Guard requires a PFD to be on board your paddle board since it is considered a vessel.

# WARRANTY AND SERVICE

Thanks for choosing Homech SUP Board.

This product is covered with Homech product and labor warranty for 12 months from the date of its original purchase.

We can only provide after sales service for products that are sold by Homech or Homech authorized retailers and distributors. If you have purchased your unit from a different place, please contact your seller for return and warranty issues.



## **NORTH AMERICA**

E-mail: [support@homech.net\(US\)](mailto:support@homech.net(US))  
[support.ca@homech.net\(CA\)](mailto:support.ca@homech.net(CA))

## **MANUFACTURER**

Manufacturer: Shenzhen NearbyExpress Technology Development Co.,Ltd.  
Address: Floor 7, Building E, Galaxy World Phase II, Shenzhen, China

尺寸:210\*140MM

装订成册

材质:封面128克铜版纸,内页80克书纸