





# NAB Award Winning Set with 5 Piece Modular Desk



 (704) 339-0785

 [support@tvsetdesigns.com](mailto:support@tvsetdesigns.com)

 @tvsetdesigns

 /tvsetdesigns

 #tvsetdesigns

 808 Tuckaseegee Road, Charlotte, NC 28208

## NAB Award Winning Set

TVsetdesigns.com designed, fabricated, and installed this set at the National Association of Broadcasters Show. It was awarded Best of Show: Small Islands. The N.A.B. set features Wave Wall panels, graphics and a number of adjustable lighting elements.



# Planning and Design

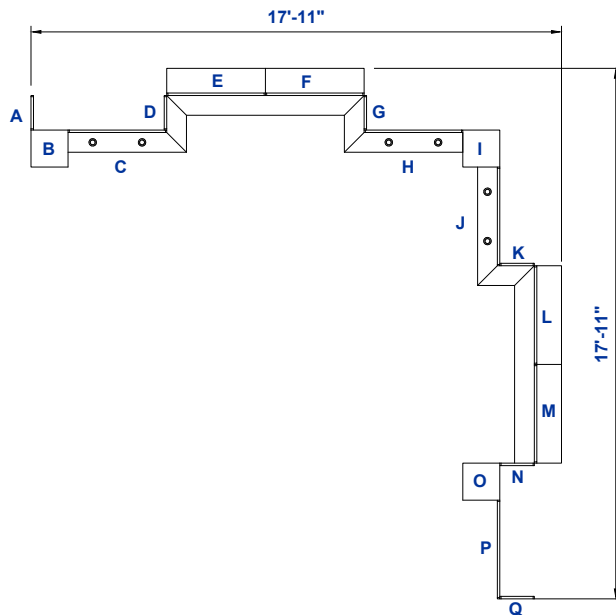


## Design Time

Our Planning and Design Service gives you one-on-one time with a designer to make your vision a reality. They work with you to dial in the details and then create 3D renderings. This provides the opportunity to try different looks before construction and means there are no surprises upon delivery.

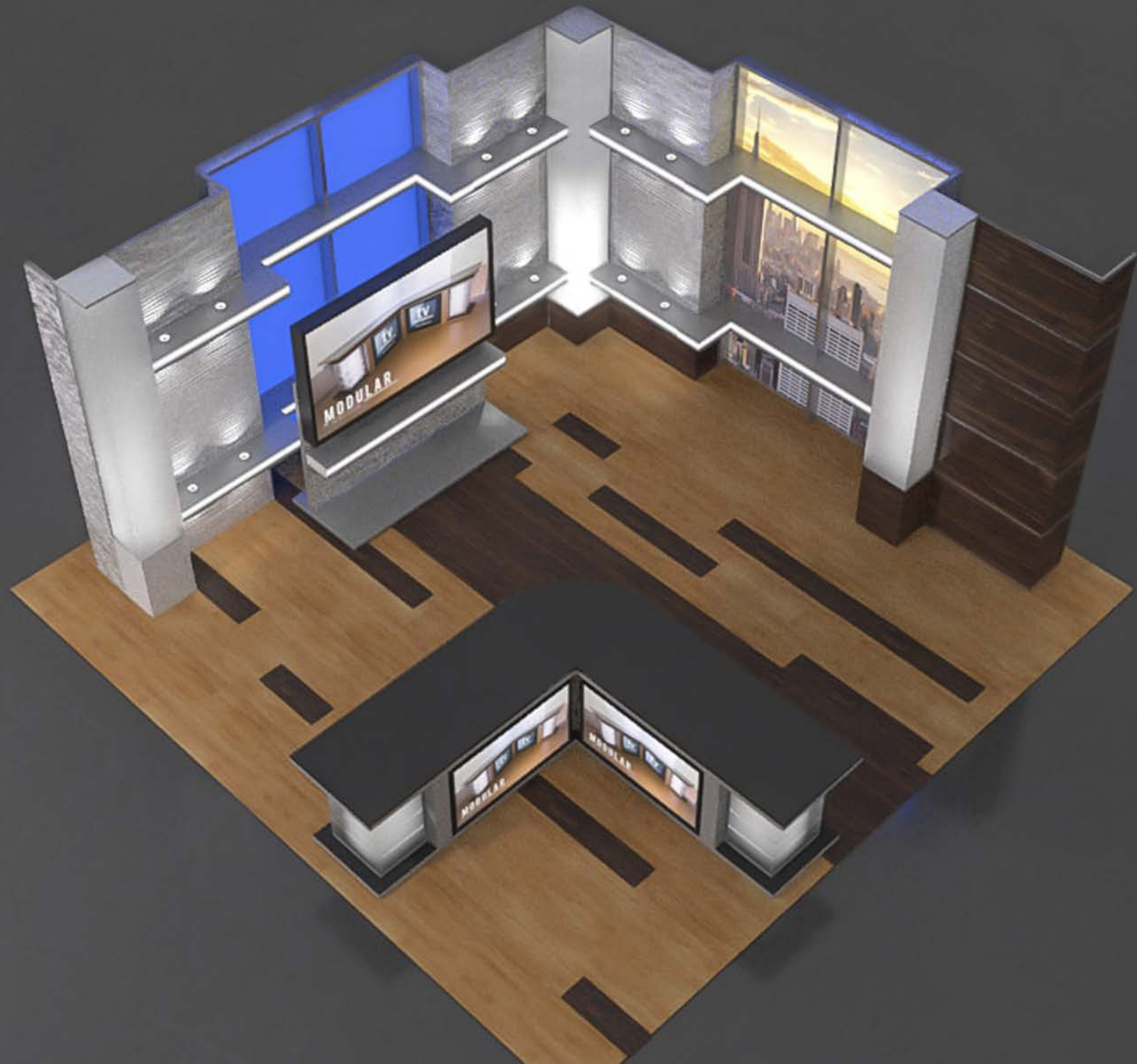
In your quote Design is itemized by the day or week. One, 8-hour day of Design is \$1,104. This includes two rendered revisions per day of Design. Standard sets usually take one, 40-hour week billed at \$5,370. A week of design allows for up to 10 revisions.

Design services are cumulative. Your 8-hour day of design can span multiple business days. This gives you space to share renderings internally and make changes without any pressure.



## Planning and design includes:

- Zoom or conference calls to plan with your team.
- Communicating via Basecamp to easily share images, documents, and comments from project start to delivery.
- Reviewing your budget, studio size, and timeline. This includes reviewing blueprints and preliminary drawings.
- Determining studio usage – Will it be a news show, interview panel, or both? What are your studio's limitations and opportunities?
- Exploring what products you like or dislike. What look and feel do you want?
- Selecting materials and samples – we offer lots of options for colors, finishes, graphics panels, textures, and other features.
- Rendering a 3D model and make revisions to finalize the design.
- Documenting all the fabrication specifications for your approval.
- Talking with the shop to problem solve any build challenges and ensure the finished product reflects your design.





**TVsetdesigns.com LLC**  
 808 Tuckaseegee Road  
 Charlotte, NC 28208-4435

Voice:704-339-0785 Fax:704-339-0545  
 support@tvsetdesigns.com

# Quote

<b>Date</b>	<b>Estimate #</b>
1/1/2024	SC0a24

**Billing Company Name / Address:**

EXAMPLE QUOTE ONLY  
 DO NOT SUBMIT A P.O.  
 ALL QUOTES ARE JOB SPECIFIC



<b>Customer Phone</b>	<b>Customer E-mail</b>	<b>Terms</b>	<b>PO Number</b>
	support@tvsetdesigns.com		

Description	Qty	Rate	U/M	Total
Project to build a One Corner Set based on 2019 NAB Set Approx 18'L x 18'D x 10'H				
<b>FRAMES AND COLUMNS</b>				
Flat Wall Frame 40"x119" with Laminate/Vinyl/Polycarbonate Skin	8	1,645.00	ea	13,160.00
Flat Wall Frame 14"x119" with Laminate/Vinyl/Polycarbonate Skin	6	1,368.00	ea	8,208.00
Square Frame Column, 14"x119" with Polycarbonate/Vinyl/Laminate Skin	3	1,975.00	ea	5,925.00
Silver Face Beam - 5"x95"/108"/119" with 1/8 ACM skin	2	191.00	ea	382.00
<b>SPECIALTY SKINS</b>				
Wall Skin 40"x24" Dimensional Wave Wall	13	248.00	ea	3,224.00
Wall Skin 14"x24" Dimensional Wave Wall	18	124.00	ea	2,232.00
Backlit Graphic - 40"x96" - white C7 or frosted polycarbonate	2	854.00	ea	1,708.00
Backlit Graphic - 40"x24" - white C7 or frosted polycarbonate	2	215.00	ea	430.00
<b>SET LIGHTING</b>				
Flat Header, each section 3" tall x 40" wide x 8" deep, includes LED RGBW light tape in header face, and white light fixtures pointing up and/or down	6	1,560.00	ea	9,360.00
Flat Header, each section 3" tall x 40" wide x 8" deep, includes LED RGBW light tape in header face only	8	888.00	ea	7,104.00
Flat Header, each section 3" tall x 14" wide x 8" deep, includes LED RGBW light tape in header face only	6	550.00	ea	3,300.00
Bounce Box Kit 40"W x 95"/108"/119"H Bounce Box, RGBW LED light bar, and cables (Fixture sits on floor)(Divider every 40")	4	1,312.00	ea	5,248.00
Column Light Kit, RGBW LED par light, DMX and power cables (requires controller)	3	422.00	ea	1,266.00
Multi-channel DMX Controller	1	324.00	ea	324.00
Subtotal before freight				61,871.00

This pricing will be honored until the end of the calendar year that the quote was issued. All freight is LTL service and the client is responsible for unloading and installation unless otherwise indicated above. Image use rights are the responsibility of the end user.	Total
----------------------------------------------------------------------------------------------------------------------------------------------------------------------------------------------------------------------------------------------------------------------------------	-------



**TVsetdesigns.com LLC**  
 808 Tuckaseegee Road  
 Charlotte, NC 28208-4435

Voice:704-339-0785 Fax:704-339-0545  
 support@tvsetdesigns.com

# Quote

<b>Date</b>	<b>Estimate #</b>
1/1/2024	SCOa24

**Billing Company Name / Address:**

**EXAMPLE QUOTE ONLY**  
**DO NOT SUBMIT A P.O.**  
**ALL QUOTES ARE JOB SPECIFIC**



<b>Customer Phone</b>	<b>Customer E-mail</b>	<b>Terms</b>	<b>PO Number</b>
	support@tvsetdesigns.com		

Description	Qty	Rate	U/M	Total
FREIGHT				
Ship 13-18 Wall Frames with Crating - Approx 128"L X 48"W X 49"W 620 lbs via LTL furniture class freight	1	1,725.00	ea	1,725.00
Ship Set Columns with Crating - Approx 128"L X 24"W X 49"H 420 lbs via LTL furniture class freight	1	1,142.00	ea	1,142.00
Ship Long Headers, Lights, Misc - Approx 128"L X 24"W X 49"H 420 lbs via LTL furniture class freight	1	1,142.00	ea	1,142.00
**Client provides unloading and install labor				
Quotes for installation or dedicated truck delivery are available upon request				
Typical production time for this project is 8-12 weeks depending on complexity of final design. Construction does not begin until payment has been received, all design decisions have been approved, and finishes have been selected				
Payment Terms: Fabrication - 50% Non-refundable deposit due to begin construction. Final deposit payment due upon completion of construction prior to shipping or installation date In lieu of deposit payments, POs are accepted only from state or federal school districts, collegiate/university institutions, and U.S. government organizations				
Please note that sales tax may be added at the time of invoicing. If we do not receive the appropriate exemption or resale certificate, we must charge tax in certain states				
Total sales tax calculated by AvaTax		0.00		0.00
Pricing good through 12/31/2024				

<p>This pricing will be honored until the end of the calendar year that the quote was issued. All freight is LTL service and the client is responsible for unloading and installation unless otherwise indicated above. Image use rights are the responsibility of the end user.</p>	<p><b>Total</b></p>
--------------------------------------------------------------------------------------------------------------------------------------------------------------------------------------------------------------------------------------------------------------------------------------	---------------------



**TVsetdesigns.com LLC**  
 808 Tuckaseegee Road  
 Charlotte, NC 28208-4435

Voice:704-339-0785 Fax:704-339-0545  
 support@tvsetdesigns.com

# Quote

<b>Date</b>	<b>Estimate #</b>
1/1/2024	SC0a24

**Billing Company Name / Address:**

**EXAMPLE QUOTE ONLY**  
**DO NOT SUBMIT A P.O.**  
**ALL QUOTES ARE JOB SPECIFIC**



<b>Customer Phone</b>	<b>Customer E-mail</b>	<b>Terms</b>	<b>PO Number</b>
	support@tvsetdesigns.com		

Description	Qty	Rate	U/M	Total
<p>NOTE: Each set is customized to the space and budget of the client. The number of design days needed will be determined by the amount of customization and the complexity of the set</p> <p>Design services will be added at the time of quoting</p> <p>OPTIONS AS SEEN IN SET PHOTO</p> <p>5 Piece Modular Desk with lit endcaps, 2 monitors, basic video wall controller, black plexi overlay, and freight \$34,060</p> <p>Large Monitor Stand with RGBW lit valance, 75" monitor, and freight \$9,031</p> <p>Triple Monitor Stand with 3, 32" monitors, video wall controller, and freight \$8,619</p>				

<p>This pricing will be honored until the end of the calendar year that the quote was issued. All freight is LTL service and the client is responsible for unloading and installation unless otherwise indicated above. Image use rights are the responsibility of the end user.</p>	<b>Total</b>	\$65,880.00
--------------------------------------------------------------------------------------------------------------------------------------------------------------------------------------------------------------------------------------------------------------------------------------	--------------	-------------