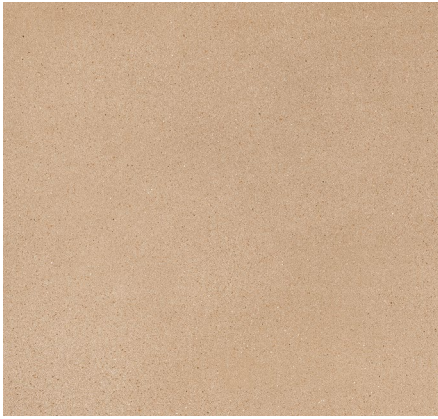


NAMIB

Introducing the Namib Collection, a tribute to one of the world's most ancient landscapes. Drawing inspiration from the Namib Desert, this selection of rectified porcelain tiles captures the depth and movement of majestic dunes in a sophisticated design. Rich in textural character, Namib boasts a uniform surface with intricate grain detailing and subtle color variations that reveal themselves upon closer inspection. Matte-finished and available in the warm hues of Camel, Dune, Earth, Ecrú, Jasper, and Linen.



NAMIB



Camel



Dune



Earth



Ecrú



Jasper



Linen

APPLICATIONS									ATTRIBUTES		VARIATION
INTERIOR FLOOR	INTERIOR WALL	SHOWER WALL	SHOWER FLOOR	EXTERIOR FLOOR	EXTERIOR WALL	POOL/ FOUNTAIN	COUNTER TOP	FIREPLACE SURROUND	DCOF		
Commercial Light/Medium	All	Yes, including steam	Yes, including steam, linear drain	Yes, including freeze thaw	Yes, including freeze thaw	Yes	Yes	Yes	0.74-0.71-0.73		
INSTALLATION/MAINTENANCE										TAILORED TO CUSTOMIZATION	
SETTING MATERIAL	GROUT	GROUT JOINT	MEMBRANE	CAULK	SEALER	CLEANER	INSTALLATION INSTRUCTIONS	LAYOUT	DRY LAYOUT	CARPET CUTTING FIELD FINISH MOSAIC SADDLE VANITY TOP WATERJET	
Ardex X77 White Microtec Fiber Reinforced Mortar ¹	Ardex FL Rapid Set Sanded ²²	1/16" minimum	Ardex B + 9	Ardex SX	AquaMix Grout Release	AquaMix Concentrated Cleaner	TCNA Handbook	Max. 33% Offset ³	Recommended		
NOTES											
¹ Alternate Mortar - Mapei Ultraflex LFT White or Ardex X5 White Medium Bed Mortar ² Alternate Grout - Mapei Ultracolor Plus FA or Ardex FG-C Microtec Unsanded ³ Per TCNA Guidelines, running bond/brick joint patterns to be set with a max. offset of 33% and min. grout joint of 1/16". Tech Notes: DCOF AcuTest - Porcelains that meet the dcof standard may have a more abrasive surface that might show dirt or debris. Remove with soap, water and firm scrubbing in order to clean. Consider this in the selection process.											
PORCELAIN FIELD TILE											
<p>24" x 24" x 3/8" Porcelain Rectified FIELD TILE</p>											