

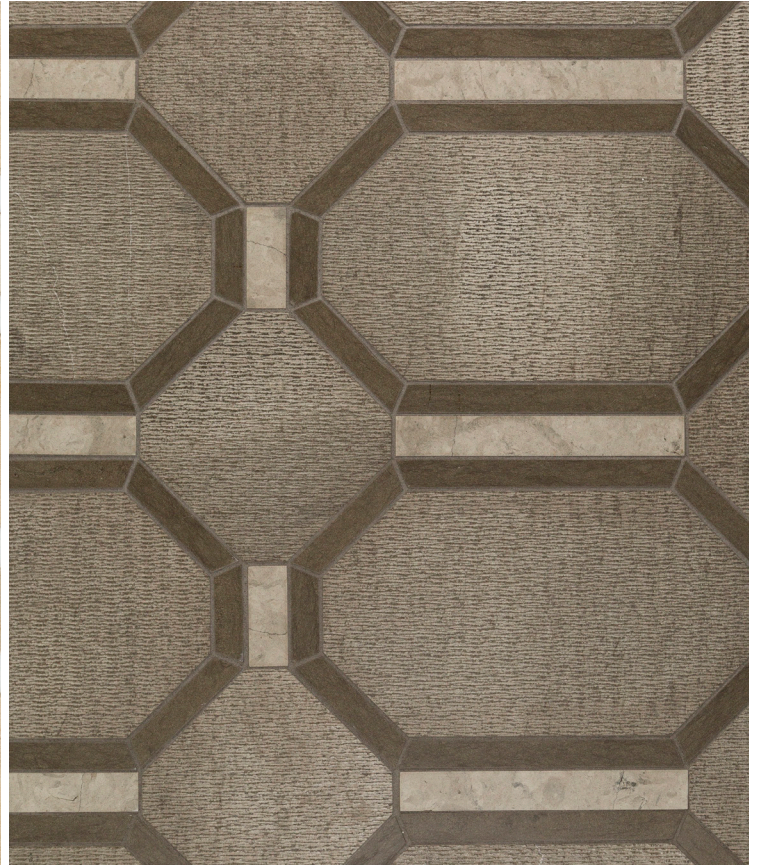
# WINCHESTER

Tailored To Waterjet Collection



## Winchester

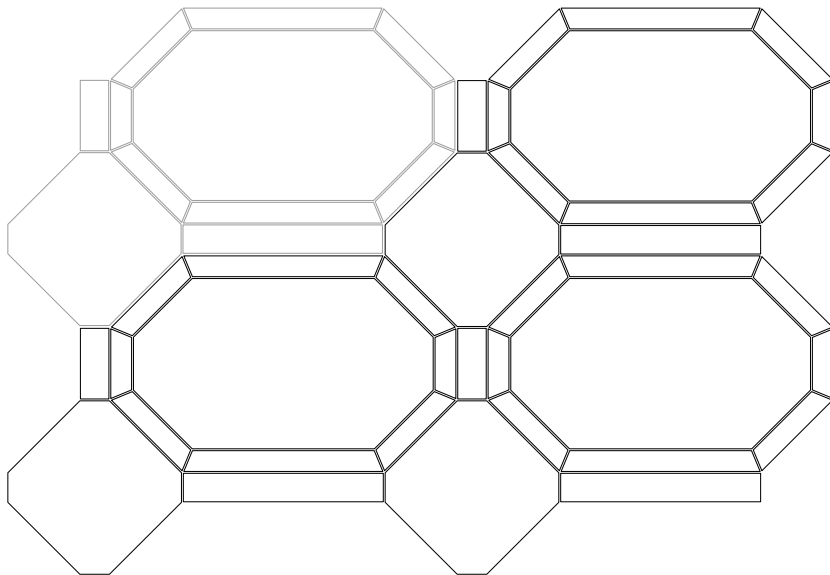
Crema Marfil *background* (1)  
Thassos *lines* (2)  
Hlila Raked *lines* (3)



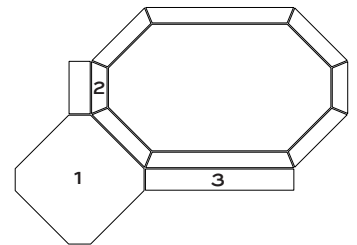
## Winchester

Grey Foussana Textura *background* (1)  
Grey Foussana *lines* (2)  
Smoke *lines* (3)

### 4 UNIT DRAWING



### DIMENSIONS

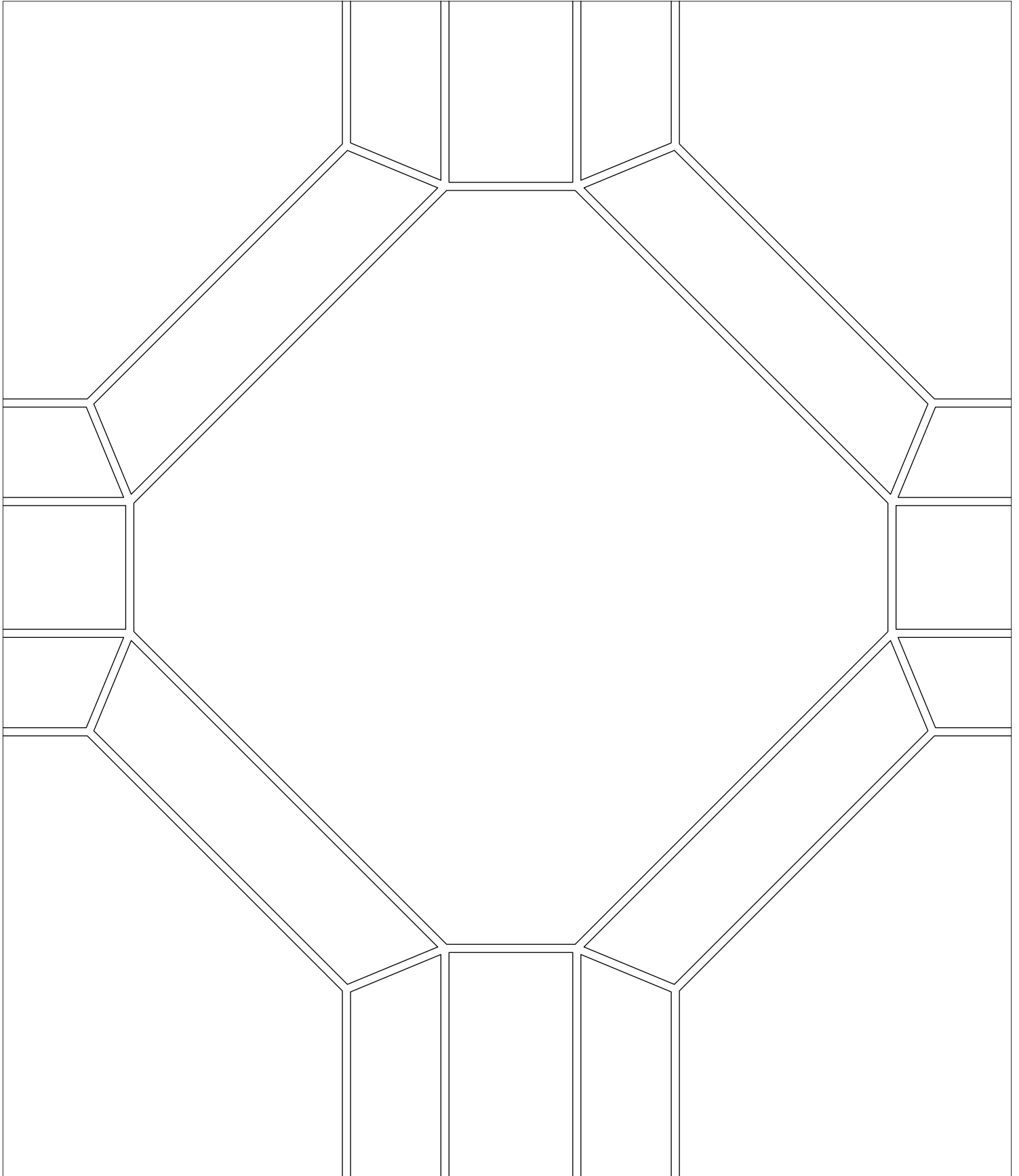


**Winchester**  
**CUTMWJWINCH**  
COVERAGE AREA:  
8 3/8" H x 12 1/2" W (0.71 sf)

\*Suggested applications, usage/characteristics and installation/maintenance are dependent on the materials of your choosing.

# WINCHESTER

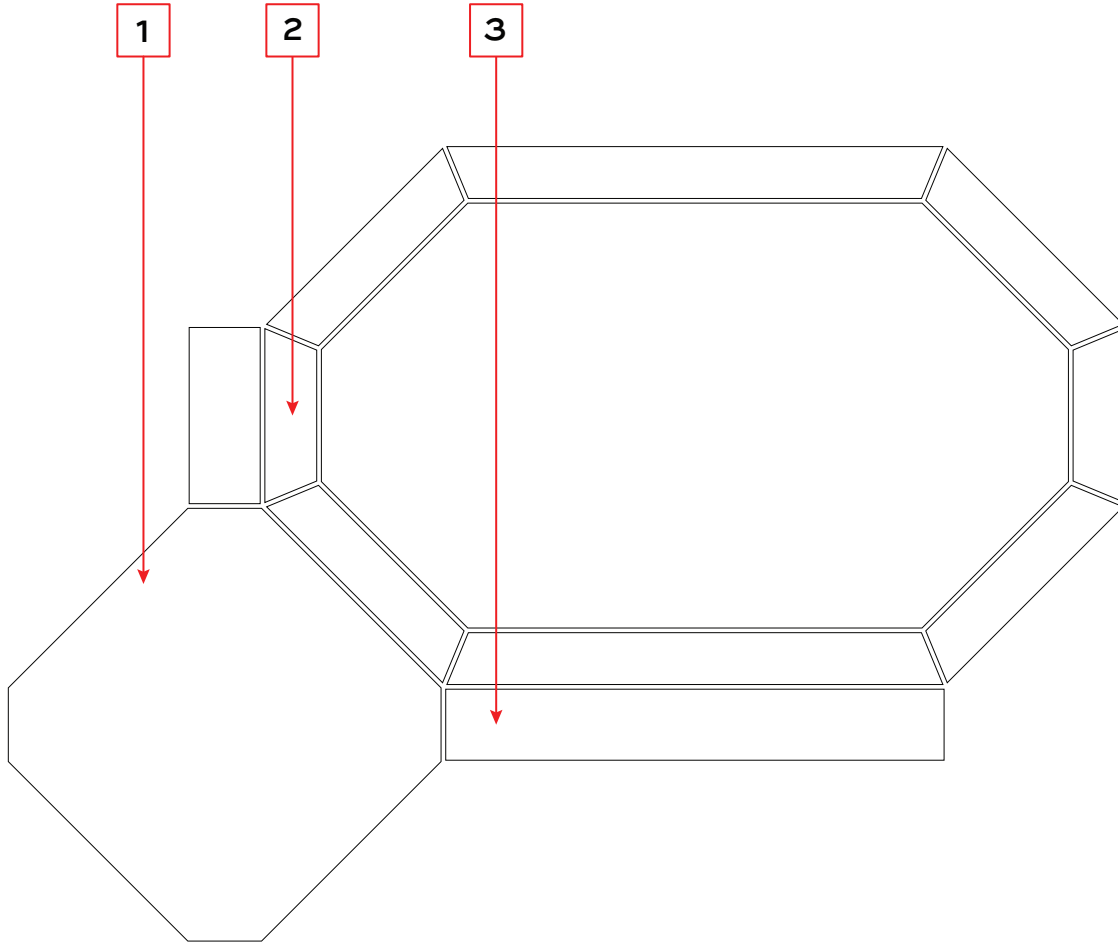
Tailored To Waterjet Collection



*\*Actual Size*

# WINCHESTER

SINGLE UNIT



## MATERIAL KEY

POSITION **1** \_\_\_\_\_

(ALL BACKGROUND PIECES)

POSITION **2** \_\_\_\_\_

(ALL BORDER PIECES)

POSITION **3** \_\_\_\_\_

(ALL LINE PIECES)

ADDITIONAL NOTES: \_\_\_\_\_

\_\_\_\_\_

\_\_\_\_\_

\_\_\_\_\_

## DESIGN NAME: WINCHESTER

ITEM CODE: CUTMWJWINCH

SHEET COVERAGE AREA: 8 <sup>3</sup>/<sub>16</sub>" H x 12 <sup>1</sup>/<sub>2</sub>" W

SQUARE FOOTAGE PER SHEET: 0.71 SF

P.O #: \_\_\_\_\_

SALES ASSOC: \_\_\_\_\_

FOR VISUALIZATION PURPOSES ONLY.  
THIS IS NOT AN INSTALLATION DRAWING.  
VERIFY ALL MEASUREMENTS PRIOR TO INSTALLATION.  
ALL MATERIALS ARE SUBJECT TO RANGE / VARIATION.  
GROUT JOINTS, CENTERING/ORIENTATION MAY VARY  
SLIGHTLY FROM DRAWING SHOWN.  
ALL CUTS HAVE A VARIANCE OF +/- <sup>1</sup>/<sub>16</sub>".

Client Signature

Date: MM/DD/YY