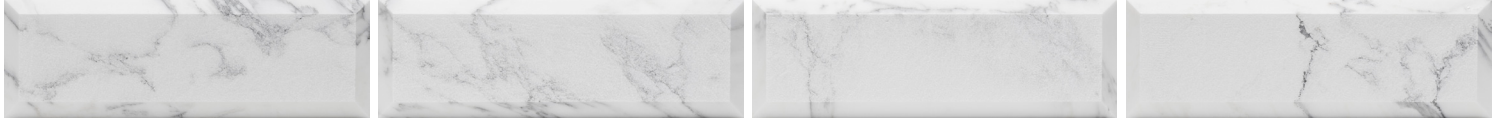


PIQUÉ BEVEL

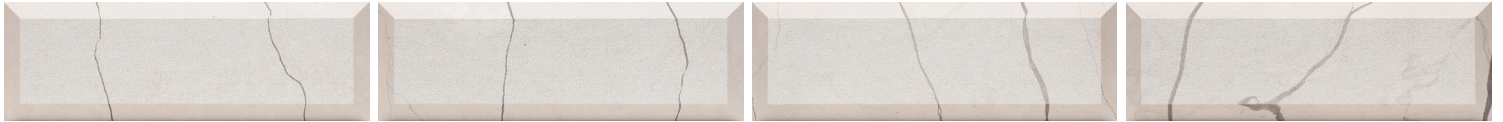
Piqué, a popular weaving style since the 18th century, adds texture and depth to the surface of a fabric. Piqué Bevel brings that textured aesthetic to our 4" x 12" beveled tiles. Stocked in Arabescato, Balkan Beige, Belgian Bluestone and Grafite stone.



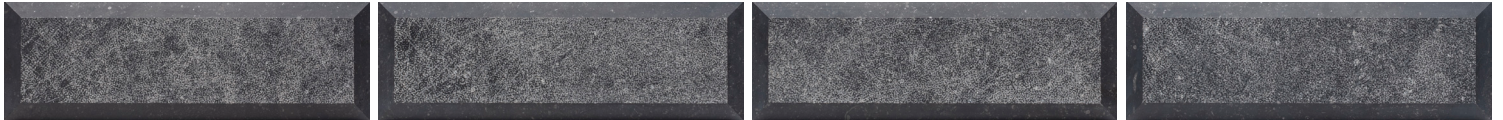
PIQUÉ BEVEL



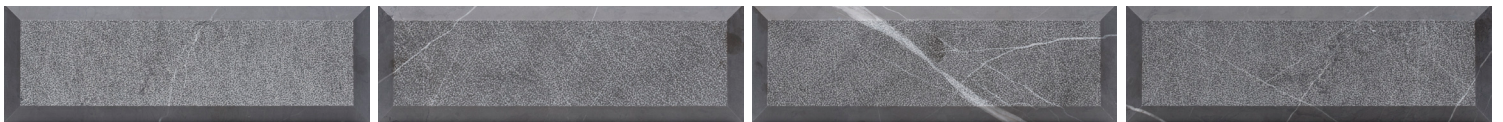
Arabescato



Balkan Beige



Bluestone



Grafite

APPLICATIONS									VARIATION			
INTERIOR FLOOR	INTERIOR WALL	SHOWER WALL	SHOWER FLOOR	EXTERIOR FLOOR	EXTERIOR WALL	POOL/ FOUNTAIN	COUNTER TOP	FIREPLACE SURROUND				
No	All	Conventional Only	No	No	No	No	No	Yes				

INSTALLATION/MAINTENANCE									
SETTING MATERIAL	GROUT	GROUT JOINT	MEMBRANE	CAULK	SEALER	CLEANER	INSTALLATION INSTRUCTIONS	LAYOUT	DRY LAYOUT
Ardex X4 Stone & Tile ¹	Ardex FL Rapid Set Sanded ²	1/16" minimum	Ardex B + 9	Ardex SX	AquaMix Sealer's Choice Gold	AquaMix Concentrated Stone & Tile Cleaner	TCNA Handbook	No	Partial ³

AVAILABLE SIZES
<p>BEVELED DIMENSIONAL FIELD TILE 4" x 12" x 3/16" 3/8" PROJECTION Honed & Textured</p>

NOTES

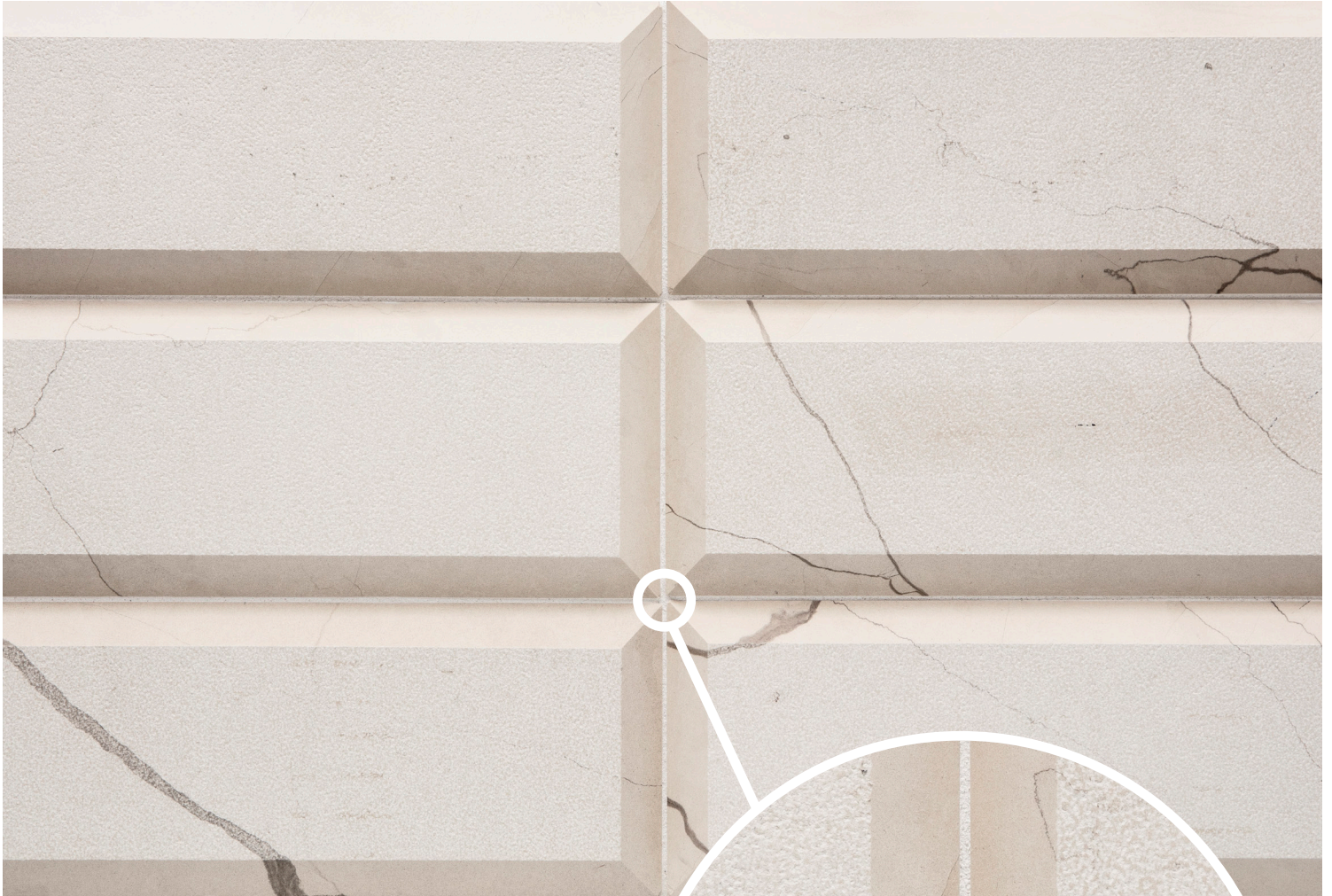
¹ Alternate Mortar - Mapei Kerabond w/Keralastic Additive or Mapei Granirapid 2-Part System - Ardex N23 Microtec Rapid set is recommended for Grafite field tile.

² Alternate Grout - Mapei Ultracolor Plus FA or Mapei Keracolor Sanded

³ Layout for color and vein selection before installation
Bag grouting recommended.

Tech note: The use of a stone color enhancer, such as AquaMix Stone Enhancer/Sealer, may be desirable to bring out the color of the stone. Test the product for client approval.

PIQUÉ BEVEL



Pique Bevel is a handmade product.
Beveled edges will exhibit some variation.