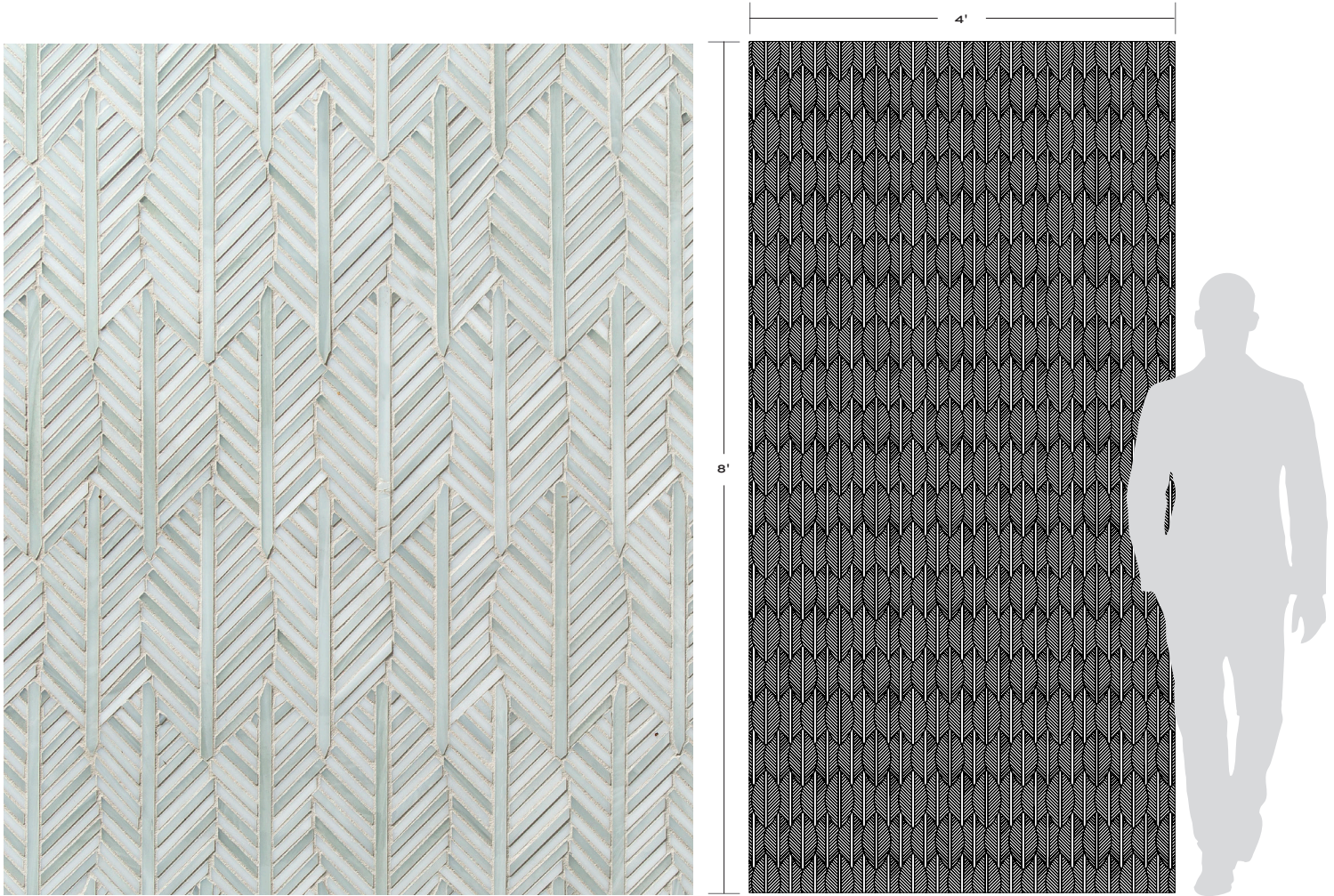


LEAF

Leaf is a stunning addition to the award winning Jazz Glass collection, with overlapping leaves delicately crafted from stained glass. Leaf's vibrant pattern is utterly modern, with a sense of depth and motion that's both serene and smartly stylish.



LEAF



Be Bop White Gloss

APPLICATIONS									VARIATION			
INTERIOR FLOOR	INTERIOR WALL	SHOWER WALL	SHOWER FLOOR	EXTERIOR FLOOR	EXTERIOR WALL	POOL/ FOUNTAIN	COUNTER TOP	FIREPLACE SURROUND	v1	v2	v3	v4
No	All	Yes, including steam	No	No	Yes, including freeze thaw ¹	No	No	Yes				

INSTALLATION/MAINTENANCE									
SETTING MATERIAL	GROUT	GROUT JOINT	MEMBRANE	CAULK	SEALER	CLEANER	INSTALLATION INSTRUCTIONS	LAYOUT	DRY LAYOUT
Mapei Adesilex P10/Keraply White ²	Mapei Keracolor Sanded ³	As established on sheets	Mapei Mapeiastic AquaDefense	Mapei Keracaulk Sanded	No	AquaMix Concentrated Stone & Tile Cleaner	A.T. Guidelines	No	Required

MOSAIC
<p>(0.54 sf/unit) Mesh mounted interlocking sheet 20 x 20 concept board</p>

NOTES

¹ Not suitable for colorways containing metallic

² Alternate mortar - Mapei Kerabond/Keralastic White, Mapei Granirapid White & Ardex X77 White
Ardex X77 - Not suitable for metallic colorways or submerged applications

³ Alternate grout - Mapei Ultracolor Plus

Tech Note: Grout joint between mosaic sheets should be the same as joints within the sheets. Particular attention should be paid to the joints between sheets - adjusting individual pieces if necessary to produce a 'seamless' installation. Final appearance of installation will be influenced by choice of grout color. Mockup to confirm grout color selection highly recommended.

LEAF

Be Bop White

Pattern Shown: Little Satch



No Grout



Mounted



Grouted

NOTES

Be Bop white is a blend of 3-white and off-grey colors of glass.

When a sheet of mosaic or a swatch card is viewed the appearance of these 3-tones will appear different than when installed and grouted.

This is because the loose sheet and swatch cards are un-grouted and light is passing through the individual pieces from the front and all sides.

In smaller formats (Estrella, Flapper Floral, Foliage, Hip Herringbone, Leaf, Little Satch, Miles Modular), what appears to be a tone with a bluish tint in this un-grouted state, will read grey once installed and grouted.

In larger formats (Metronome, Scales, Swingin' Chevron, Treble) the pieces in question will continue to exhibit a bluish-tint.

In addition to the inherent change in appearance, grout color selection may also change the perceived color of the glass.