

SCALES

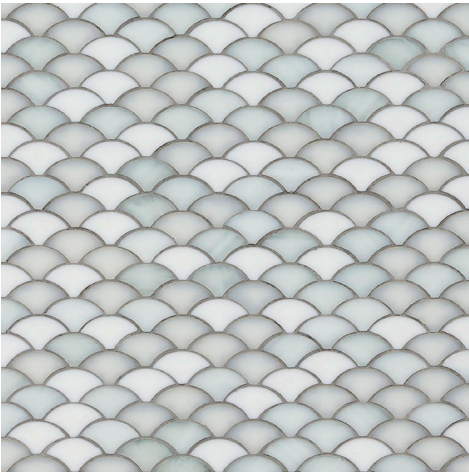
—

Meet Scales, a classic fishscale pattern cut from glass in a petite size and contemporary colorways. Stocked in Be Bop White & Blue Blend, Scales can be fashioned from any combination of our Jazz Glass colors by special order.

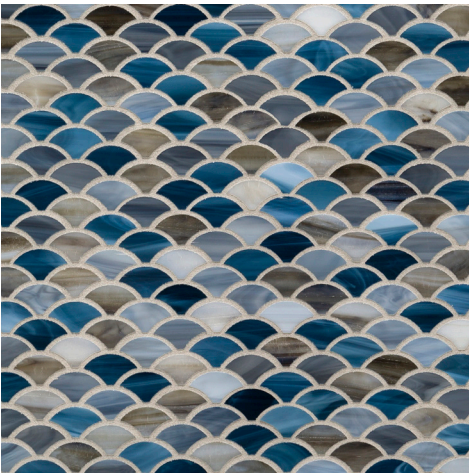


PICTURED: SCALES BLUE BLEND

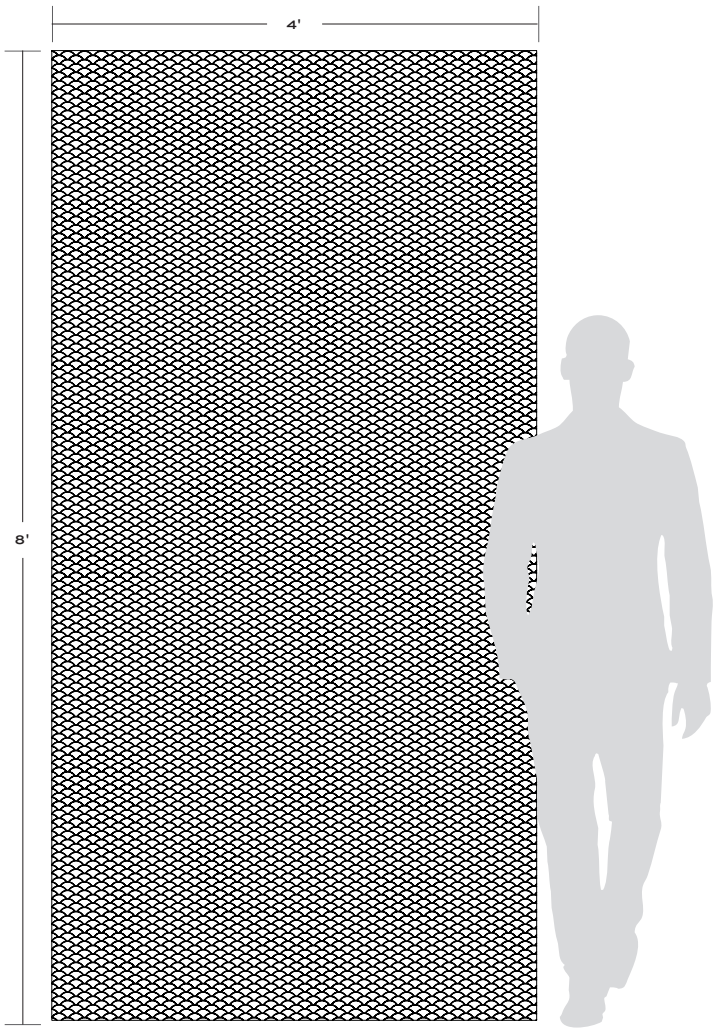
SCALES



Be Bop White Gloss



Blue Blend Gloss



APPLICATIONS							
INTERIOR FLOOR	INTERIOR WALL	SHOWER WALL	SHOWER FLOOR	EXTERIOR FLOOR	EXTERIOR WALL*	POOL/ FOUNTAIN*	COUNTER TOP
Light Traffic Residential	All	Yes, including steam	Yes	No	Yes, including freeze thaw	Yes, including freeze thaw	No

VARIATION			
V1	V2	V3	V4

INSTALLATION/MAINTENANCE									
SETTING MATERIAL*	GROUT*	GROUT JOINT	MEMBRANE	CAULK	SEALER	CLEANER	INSTALLATION INSTRUCTIONS	LAYOUT	DRY LAYOUT
Mapei Adesilex P10/Keraply	Mapei Keracolor Unsanded	As established on sheets	Mapei Mapelastix AquaDefense	Mapei Keracaulk Unsanded	No	AquaMix Concentrated Stone & Tile Cleaner	A.T. Guidelines	No	Required

MOSAIC
<p>10 15/16" x 10 1/16" x 1/8" (0.76 sf) interlocking sheets</p>

NOTES
<p>*Exterior Wall: Not suitable for colorways containing metallic</p> <p>*Pool/Fountain: Not suitable for colorways containing metallic. Swimming Pool - Vertical applications only</p> <p>*Setting Material: Alternate mortar - Mapei Kerabond/Keralastic, Mapei Granirapid System & Ardex X77 Ardex X77 - Not suitable for metallic colorways or submerged applications</p> <p>*Grout: Alternate grout - Mapei Ultracolor Plus Sanded or Ardex FG-C Unsanded</p> <p>Tech Note: Grout joint between mosaic sheets should be the same as joints within the sheets. Particular attention should be paid to the joints between sheets - adjusting individual pieces if necessary to produce a 'seamless' installation. Final appearance of installation will be influenced by choice of grout color. Mockup to confirm grout color selection highly recommended.</p>