

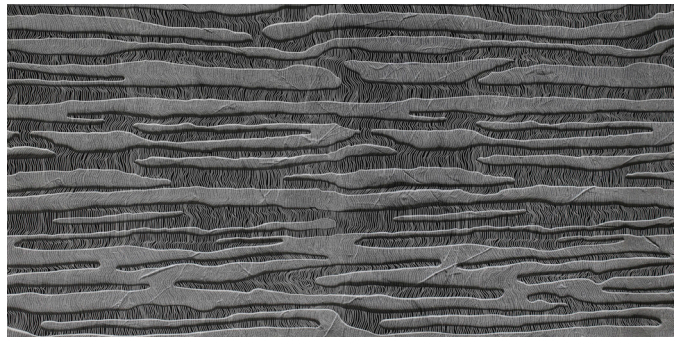
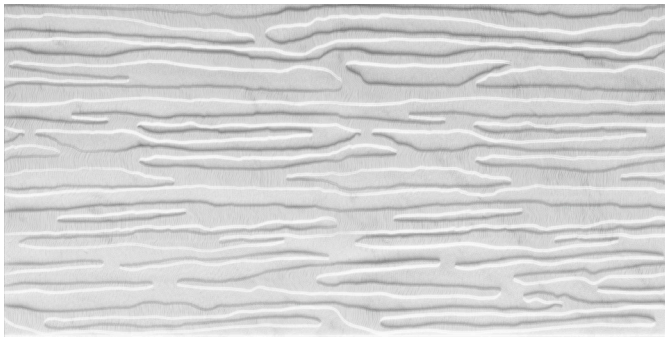
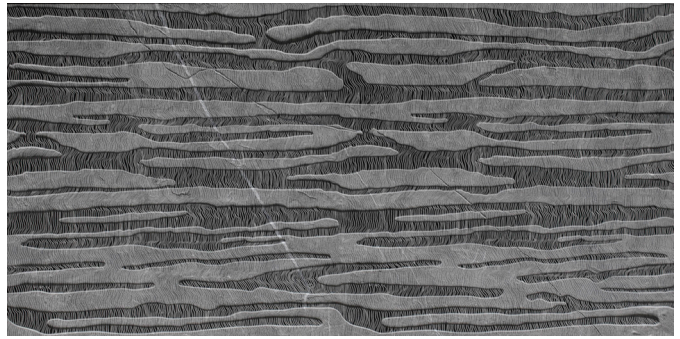
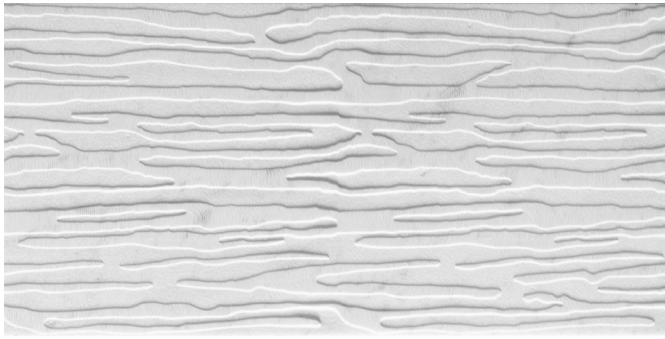
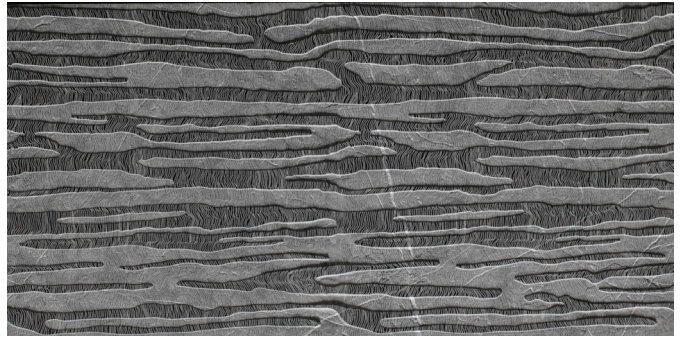
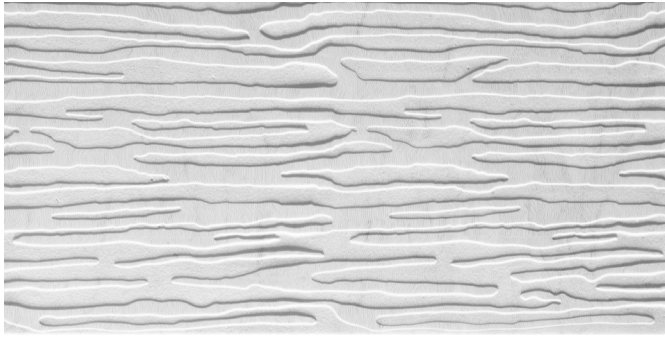
# FOREST *by* LORI WEITZNER

The first in our collaboration with award-winning textile designer Lori Weitzner, Forest expresses Lori's affinity for texture, etching a distinctly organic tree bark-like pattern into marble via three individual techniques. The pattern's surface treatment interacts with the natural movement in the stone beneath to make each piece a unique composition. Stocked as a 12 x 24 field tile.





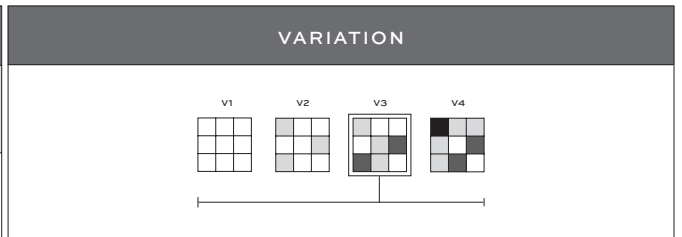
# FOREST *by* LORI WEITZNER



Bianco Carrara - Textured

China Black - Textured

APPLICATIONS							
INTERIOR FLOOR	INTERIOR WALL	SHOWER WALL	SHOWER FLOOR	EXTERIOR FLOOR	EXTERIOR WALL	POOL/ FOUNTAIN	COUNTER TOP
No	All	Yes, including steam	No	No	Yes, non-freeze thaw	No	No



INSTALLATION/MAINTENANCE									
SETTING MATERIAL	GROUT	GROUT JOINT	MEMBRANE	CAULK	SEALER	CLEANER	INSTALLATION INSTRUCTIONS	LAYOUT	DRY LAYOUT
See Notes <sup>1</sup>	Mapei Keracolor Unsanded <sup>2</sup>	1/8" minimum	Ardex 8+9	Ardex SX	AquaMix Grout Release	AquaMix Concentrated Stone & Tile Cleaner	TCNA Handbook	Maintain Tile Orientation <sup>3</sup>	Sample <sup>4</sup>

TEXTURED FIELD TILE
TEXTURED FIELD TILE 12" x 24" x 3/8"

**NOTES**

<sup>1</sup>Bianco Carrara: Ardex X77 Microtec Reinforced Mortar, Ardex X5 Medium Bed Mortar or Mapei Granirapid 2-Part System  
 China Black: Ardex N23 Microtec Rapid Set or Mapei Granirapid 2-Part System  
<sup>2</sup>Alternate Grout - Ardex FG-C Microtec Unsanded or Mapei Ultracolor Plus FA  
<sup>3</sup> Must line up short edge to short edge, but you could brick along the long edge.  
<sup>4</sup>Layout for overview of material before installation.  
 Tech Notes: Do not use color enhancer.