

TUMBLLED

Classic tumbled stone gets a modern update in a 4" x 12" brick format. The matte surface, rounded corners, and rustic, irregular edges give tumbled stone a natural look that's more casual than our polished and honed finishes. Stocked in a variety of colors and in a classic herringbone mosaic pattern that combines all colorways.



PICTURED: BIANCO CARRARA TUMBLLED, BALKAN BEIGE TUMBLLED, SMOKE TUMBLLED

TUMBLLED



Thassos A2 Select



Arabescato



Bianco Carrara



Calacatta Rosa



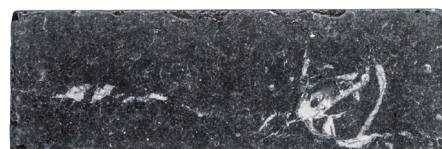
Rosa Portogallo



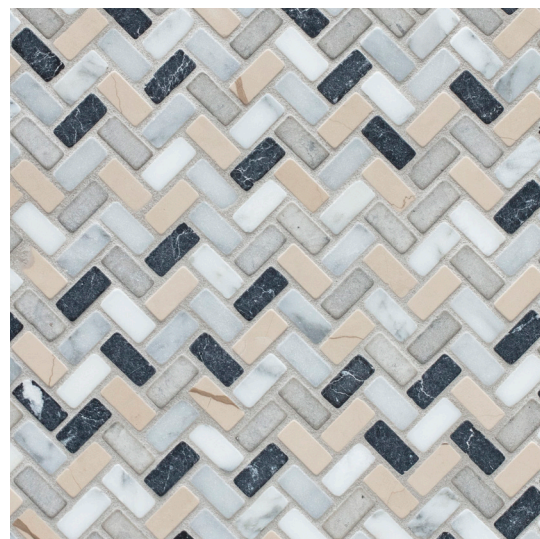
Balkan Beige



Smoke



Nero Marquina

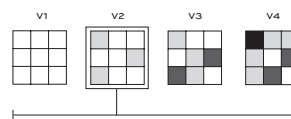


Grey Blend Herringbone Mosaic

APPLICATIONS

INTERIOR FLOOR	INTERIOR WALL	SHOWER WALL	SHOWER FLOOR	EXTERIOR FLOOR	EXTERIOR WALL	POOL/ FOUNTAIN	COUNTER TOP	FIREPLACE SURROUND
Commercial Light/Medium	All	Yes, including steam	See Notes ¹	No	Yes, non-freeze thaw ¹	No	Yes	Yes

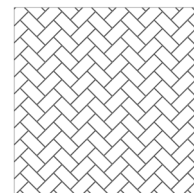
VARIATION²



INSTALLATION/MAINTENANCE

SETTING MATERIAL	GROUT	GROUT JOINT	MEMBRANE	CAULK	SEALER	CLEANER	INSTALLATION INSTRUCTIONS	LAYOUT	DRY LAYOUT
Ardex X4 White Tile & Stone ³	See Notes ⁴	1/8" minimum	Mapei Mapelastick AquaDefense	Mapei Keracaulk Unsanded	AquaMix Sealer's Choice Gold	AquaMix Concentrated Stone & Tile Cleaner	TCNA Handbook	No	Required

FIELD TILE



HERRINGBONE MOSAIC
12 5/16" x 13 1/4" x 3/8"



FIELD TILE
4" x 12" x 3/8"

NOTES

¹Smoke - No

Herringbone Mosaic - Yes; Field Tile - Linear drains only

²Nero Marquina, Smoke, Balkan Beige, Arabescato - V3; Thassos - V1

³Alternate mortar - Mapei Kerabond w/Keralastic Additive or Mapei Granirapid 2-Part System

Smoke only - Ardex N23 White Microtec Rapid Set or Mapei Granirapid White 2-part System

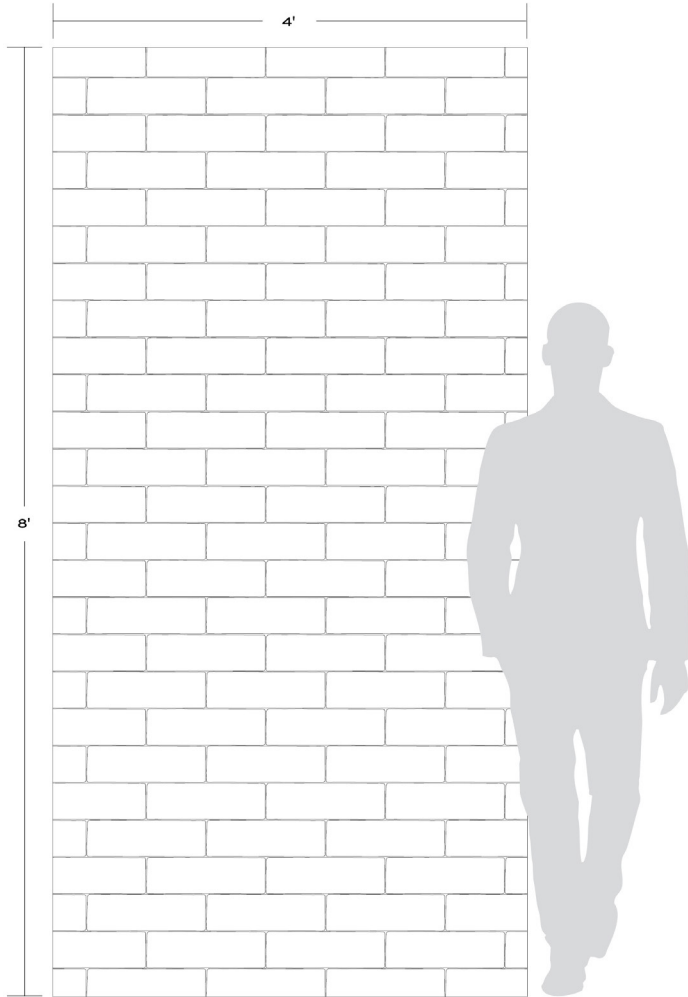
⁴Calacatta Rosa, Rosa Portogallo - Ardex FG-C Microtec Unsanded, Mapei Ultracolor Plus FA or Mapei Keracolor Sanded

Thassos, Bianco Carrara, Arabescato, Balkan Beige, Smoke, Nero Marquina - Ardex FL Rapid Set Sanded,

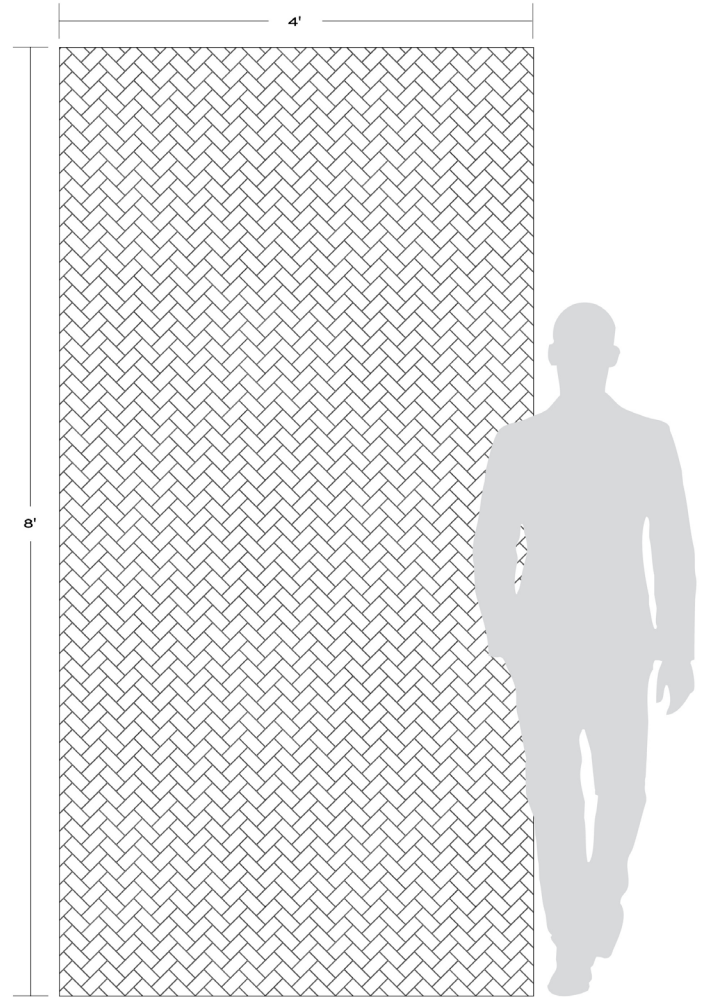
Mapei Ultracolor Plus FA or Mapei Keracolor Sanded

Showers: Product MUST be installed in accordance with current TCNA Handbook Stone Methods. If job requires mud work, White Portland cement must be used. Inherent voids may be present in the stone that will not be filled during production. This is intended to be part of the natural aesthetic of this product. Shade variation of white, and inclusions are to be expected as well as unfilled voids within the stone, piece to piece, and in individual pieces.

TUMBLLED



Tumbled 4" × 12" Field Tile



Tumbled Herringbone Mosaic