

# MARTELLO

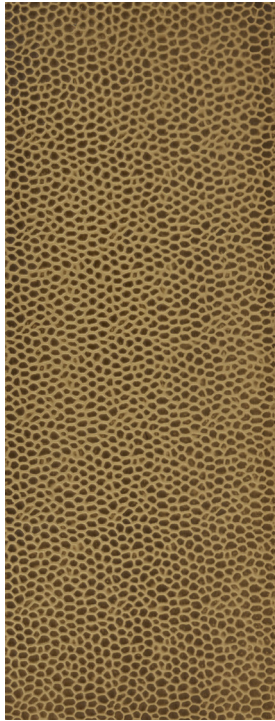
—

Stone tiles wrapped in hand-worked, hammered & antiqued metal sheets wrought in a technique used for centuries in jewelry and decorative objects. Presented in Gold and Silver, Martello adds rich, luminescent texture to any design project.

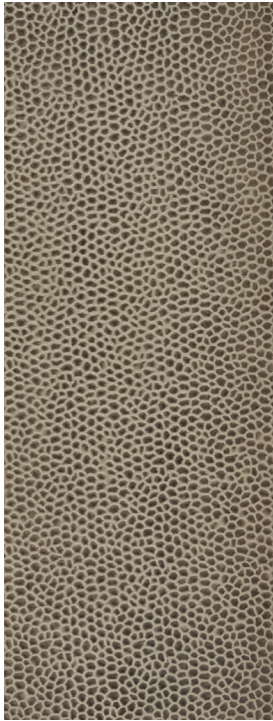




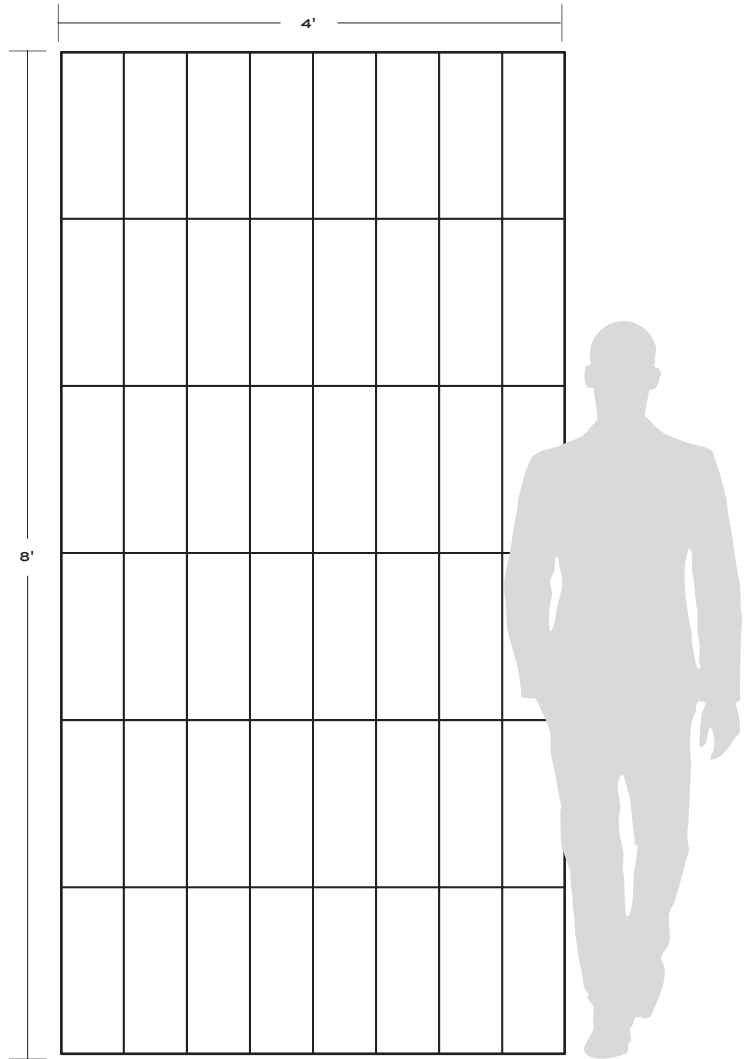
# MARTELLO



Gold



Silver



APPLICATIONS									VARIATION				TAILORED TO CUSTOMIZATION		
INTERIOR FLOOR	INTERIOR WALL	SHOWER WALL	SHOWER FLOOR	EXTERIOR FLOOR	EXTERIOR WALL	POOL/ FOUNTAIN	COUNTER TOP	FIREPLACE SURROUND	V1	V2	V3	V4	CARPET CUTTING	FIELD	
No	Dry application only <sup>1</sup>	No	No	No	No	No	No <sup>2</sup>	No <sup>2</sup>					FINISH	MOSAIC	
													SADDLE	VANITY TOP	WATERJET

INSTALLATION/MAINTENANCE									
SETTING MATERIAL	GROUT	GROUT JOINT	MEMBRANE	CAULK	SEALER	CLEANER	INSTALLATION INSTRUCTIONS	LAYOUT	DRY LAYOUT
Ardex N23 Microtec White Rapid Set	Ardex FG-C Microtec Unsanded	1/16" Min.	Mapei Mapelastc AquaDefense	Ardex SX	Not Required	AquaMix Concentrated Cleaner	No	No	Recommended

**DECORATIVE STONE FIELD TILE**

16" x 6" x 3/8"  
(0.66 sf/unit)

Metallic Finish

**NOTES**

<sup>1</sup> Not suitable for use near heat such as fireplace or stove tops.  
 Tech Notes: This is a hand made product. Natural variation of metal color is part of the overall visual effect.  
 Install with Ardex N23 White or Mapei Granirapid White.

# MARTELLO GOLD



**PRODUCT PERFORMANCE TESTING LABORATORY**

100 Clemson Research Blvd., Anderson, SC 29625

Phone 864.646.8453 Fax 864.646.2821

Email testing@tcnatile.com Web www.TCNAtile.com

**TCNA TEST REPORT NUMBER:**

**TCNA-0638-21**

**PAGE: 3 OF 8**

**TEST RESULTS:**

Cycle	Wheels	Weight (lb)	Observations
1	Soft Rubber	100	No damage observed, maximum deflection 0.012"
2		200	No damage observed, maximum deflection 0.014"
3		300	No damage observed, maximum deflection 0.019"
4		300	No damage observed, maximum deflection 0.021"
5	Hard Rubber	100	No damage observed, maximum deflection 0.016"
6		200	No damage observed, maximum deflection 0.021"
7		300	No damage observed, maximum deflection 0.024"
8		300	No damage observed, maximum deflection 0.023"
9	Steel	50	No damage observed, maximum deflection 0.015"
10		100	No damage observed, maximum deflection 0.017"
11		150	1 spalled grout joint observed, maximum deflection 0.019"
12		200	15 damaged tiles observed, maximum deflection 0.022"
13		250	
14		300	

*Note: Per ASTM C627, section 9.2, an installation shall be considered to have failed to pass any cycle in which the cumulative total number of damages to tile and grout in any one of the following categories meets or exceeds the amount stated in the following table:*

*Possible types of damage: chipped tile, broken tile, loose tile, spalled grout joints, cracked grout joints, and powdered grout joints. All are defined in ASTM C627.*

Total # of damages to tile and grout required to fail to pass a cycle for X number joints and tiles, where X= (# of joints in the wheel path) + (#of tiles in the wheel path)				
X ≤ 40	40 < X ≤ 60	60 < X ≤ 80	80 < X ≤ 100	>100
2	3	4	5	>5% of tiles and joints in wheel path

**HANDBOOK CLASSIFICATIONS\*:**

Classification	Cycles
Residential	Passes cycles 1-3
Light	Passes cycles 1-6
Moderate	Passes cycles 1-10
Heavy	Passes cycles 1-12
Extra Heavy	Passes cycles 1-14

*\*For more detailed information, refer to the TCNA Handbook for Ceramic, Glass, and Stone Tile Installation.*



This report is confidential and has been prepared for the exclusive use of the client. It is not an endorsement, approval, certification, or criticism of any product by TCNA. This report shall not be published in any form without prior written consent from TCNA

# MARTELLO SILVER



**PRODUCT PERFORMANCE TESTING LABORATORY**

100 Clemson Research Blvd., Anderson, SC 29625

Phone 864.646.8453 Fax 864.646.2821

Email testing@tcnatile.com Web www.TCNAtile.com

**TCNA TEST REPORT NUMBER:**

**TCNA-0723-21**

**PAGE: 3 OF 8**

**TEST RESULTS:**

Cycle	Wheels	Weight (lb)	Observations
1	Soft Rubber	100	No damage observed, maximum deflection 0.006"
2		200	No damage observed, maximum deflection 0.010"
3		300	No damage observed, maximum deflection 0.012"
4		300	No damage observed, maximum deflection 0.013"
5	Hard Rubber	100	No damage observed, maximum deflection 0.009"
6		200	No damage observed, maximum deflection 0.012"
7		300	No damage observed, maximum deflection 0.016"
8		300	No damage observed, maximum deflection 0.017"
9	Steel	50	No damage observed, maximum deflection 0.007"
10		100	No damage observed, maximum deflection 0.010"
11		150	6 damaged tiles & 1 cracked grout joint observed, maximum deflection 0.013"
12		200	
13		250	
14		300	

*Note: Per ASTM C627, section 9.2, an installation shall be considered to have failed to pass any cycle in which the cumulative total number of damages to tile and grout in any one of the following categories meets or exceeds the amount stated in the following table:*

*Possible types of damage: chipped tile, broken tile, loose tile, spalled grout joints, cracked grout joints, and powdered grout joints. All are defined in ASTM C627.*

Total # of damages to tile and grout required to fail to pass a cycle for X number joints and tiles, where X= (# of joints in the wheel path) + (#of tiles in the wheel path)				
$X \leq 40$	$40 < X \leq 60$	$60 < X \leq 80$	$80 < X \leq 100$	$>100$
2	3	4	5	>5% of tiles and joints in wheel path

**HANDBOOK CLASSIFICATIONS\*:**

Classification	Cycles
Residential	Passes cycles 1-3
Light	Passes cycles 1-6
Moderate	Passes cycles 1-10
Heavy	Passes cycles 1-12
Extra Heavy	Passes cycles 1-14

*\*For more detailed information, refer to the TCNA Handbook for Ceramic, Glass, and Stone Tile Installation.*



This report is confidential and has been prepared for the exclusive use of the client. It is not an endorsement, approval, certification, or criticism of any product by TCNA. This report shall not be published in any form without prior written consent from TCNA