

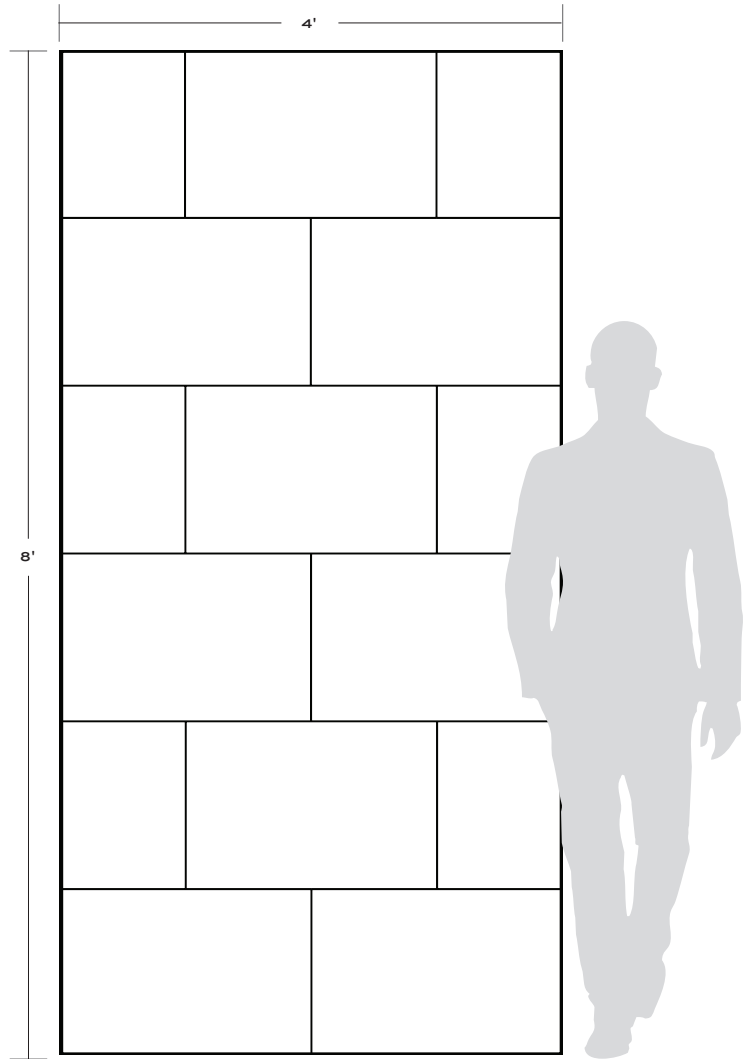
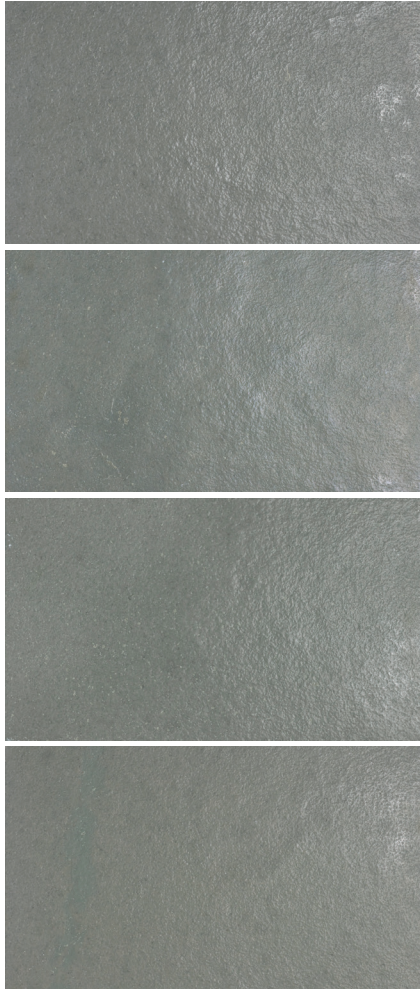
# LAKE BLUE

---

Lake Blue's dusky blue-grey-green coloring evokes stormy lake waters, or a deep ocean vista from high above, with subtle variance in color from one tile to the next. Stocked in straight-edged 16" x 24" field tile with a brushed finish, reminiscent of ripples on water.



# LAKE BLUE



APPLICATIONS									VARIATION				TAILORED TO CUSTOMIZATION	
INTERIOR FLOOR	INTERIOR WALL	SHOWER WALL	SHOWER FLOOR	EXTERIOR FLOOR	EXTERIOR WALL	POOL/ FOUNTAIN	COUNTER TOP	FIREPLACE SURROUND	V1	V2	V3	V4	CARPET CUTTING	FIELD
Commercial Light/Medium	All	Yes, including steam	Yes, in mosaic formats only	No	Yes, non-freeze thaw	No	Yes	Yes					FINISH	MOSAIC
													SADDLE	VANITY TOP
													WATERJET	

INSTALLATION/MAINTENANCE									
SETTING MATERIAL	GROUT	GROUT JOINT	MEMBRANE	CAULK	SEALER	CLEANER	INSTALLATION INSTRUCTIONS	LAYOUT	DRY LAYOUT
Ardex X77 White Microtec Fiber Reinforced Mortar	Mapei Ultracolor Plus FA	1/16" Min.	Mapei Mapelastick AquaDefense	Mapei Keracaulk Sanded	AquaMix Sealers Choice Gold	AquaMix Concentrated	TCNA Handbook	No	Recommended

STONE FIELD TILE
<p>16" x 24" x 5/8" (2.67 sf/unit)</p> <p><i>Rustic Finish Straight Edge Field Tile</i></p>

NOTES
<p><sup>1</sup> Alternate mortar - Ardex X5 White Medium Bed Mortar or Mapei Ultraflex LFT White</p> <p><sup>2</sup> Alternate grout - Mapei Flexcolor CQ</p> <p>Tech Notes: Do not use color enhancer. White mortar is recommended for natural stone</p>