

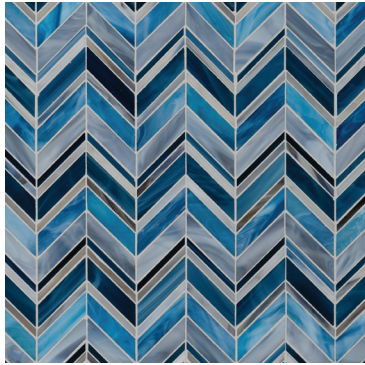
# SWINGIN' CHEVRON

Straight out of the jazz clubs of the roaring twenties, Swingin' Chevron struts and shakes its stuff in style! These hot little chevrons take a classic pattern and stuff it with pizzaz, shimmering in sultry Jazz Glass colors like Detroit Blues and Blue Blend.



PICTURED: SWINGIN' CHEVRON DETROIT BLUES

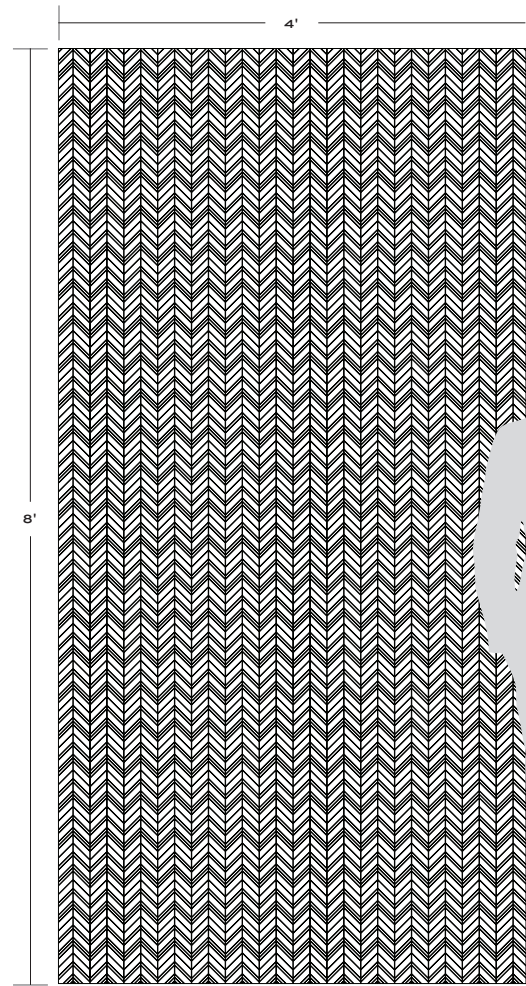
# SWINGIN' CHEVRON



**BLUE BLEND**  
*Detroit Blue, Denim Blue, BB Blue, Trumpet Turquoise*



**DETROIT BLUES**



APPLICATIONS								
INTERIOR FLOOR	INTERIOR WALL	SHOWER WALL	SHOWER FLOOR	EXTERIOR FLOOR	EXTERIOR WALL	POOL/ FOUNTAIN	COUNTER TOP	FIREPLACE SURROUND
No <sup>1</sup>	All	Yes, including steam	No	No	Yes, including freeze thaw <sup>2</sup>	No	Not Recommended	Yes

VARIATION			
V1	V2	V3	V4

INSTALLATION/MAINTENANCE									
SETTING MATERIAL	GROUT	GROUT JOINT	MEMBRANE	CAULK	SEALER	CLEANER	INSTALLATION INSTRUCTIONS	LAYOUT	DRY LAYOUT
Mapei Adesilex P10/Keraply White <sup>3</sup>	Mapei Ultracolor Plus Sanded	As established on sheets	Mapei Mapelastix AquaDefense	Mapei Keracaulk Sanded	Not Required	AquaMix Concentrated Stone & Tile Cleaner	A.T. Guidelines	No	Required

MOSAIC
<p>13 7/8" x 11 1/4" x 1/8"                      (1.08 sf/unit)                      Mesh mounted interlocking sheet                      Gloss Finish</p>

**NOTES**

<sup>1</sup> Pattern not suitable for floor applications.  
<sup>2</sup> Not suitable for colorways containing metallic  
<sup>3</sup> Alternate mortar - Mapei Kerabond/Keralastic, Mapei Granirapid System & Ardex X77  
 Ardex X77 - Not suitable for metallic colorways or submerged applications  
 Tech Note: Grout joint between mosaic sheets should be the same as joints within the sheets. Particular attention should be paid to the joints between sheets - adjusting individual pieces if necessary to produce a 'seamless' installation.  
 Final appearance of installation will be influenced by choice of grout color. Mockup to confirm grout color selection highly recommended.