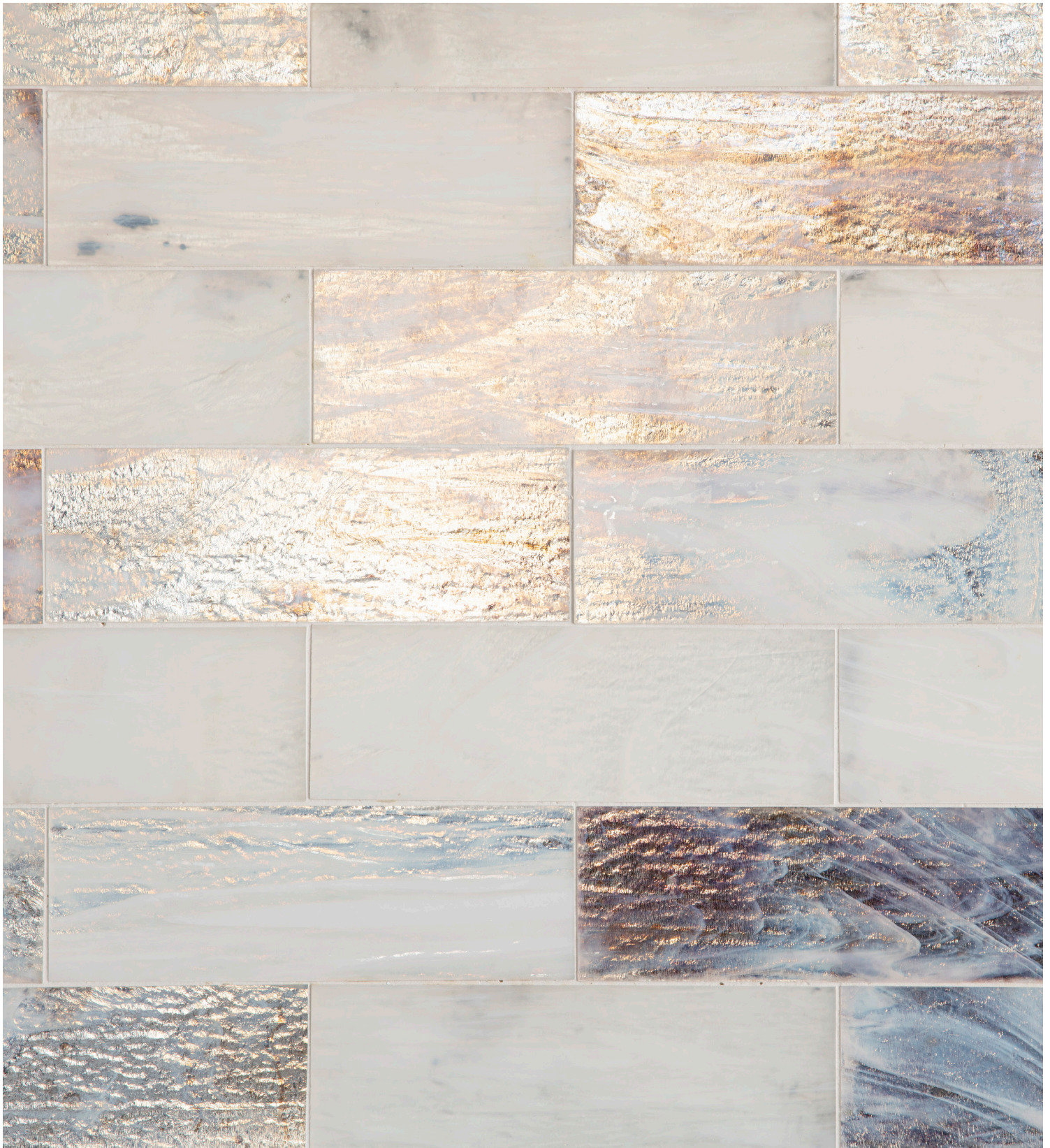


MOONBEAM

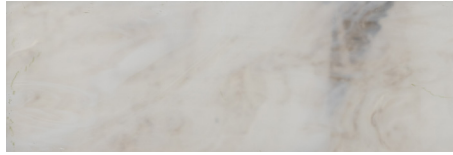
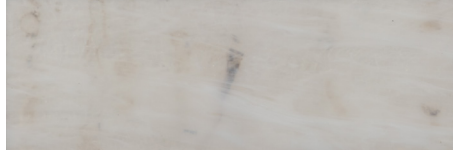
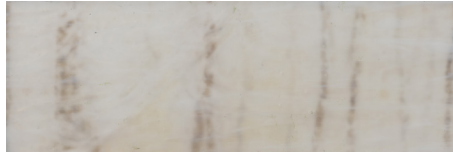
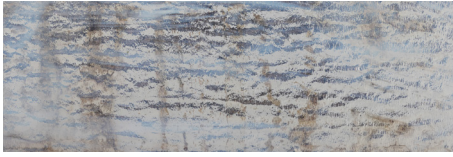
Jazz Glass Collection

Full of life and pizzazz, Jazz Glass™ is the opposite of dull and drab. Handcrafted Jazz Glass™ stained Glass in a beautiful and versatile field Tile. Available as 3" x 9" elongated subway tiles, they are ideal for kitchen backsplashes and bathroom walls.



MOONBEAM

Jazz Glass Collection



Tambourine Traps Moonbeam

Moonbeam Gloss

Moonbeam Matte

APPLICATIONS								
INTERIOR FLOOR	INTERIOR WALL	SHOWER WALL	SHOWER FLOOR	EXTERIOR FLOOR	EXTERIOR WALL	POOL/FOUNTAIN	COUNTER TOP	FIREPLACE SURROUND
No	Dry Application Only	No	No	No	No	No	No	Yes

VARIATION

INSTALLATION/MAINTENANCE									
SETTING MATERIAL	GROUT	GROUT JOINT	MEMBRANE	CAULK	SEALER	CLEANER	INSTALLATION INSTRUCTIONS	LAYOUT	DRY LAYOUT
Mapei Planicrete W ¹	Mapei Ultracolor Plus FA ²	1/8" Minimum	Mapei Mapelastick AquaDefense	Mapei Keracaulk Sanded	Not Required	AquaMix Concentrated Stone & Tile Cleaner	A.T. Guidelines	No	Required

AVAILABLE SIZES
<p>3" x 9" x 1/8" Gloss, Matte Field Tile</p>
<p>Mixed Finish Glass Mosaic (1.21 sf/unit) Mesh mounted interlocking sheet 20 x 20 concept board</p>

NOTES
<p>¹ Alternate mortar - Litokol Litoelastic</p> <p>² Alternate grout - Ardex FG-C Microtec Unsanded, Mapei Flexcolor CQ</p> <p>Tech Note: Not recommended for use on floors.</p> <p>Refer to installation guidelines for appropriate setting materials.</p> <p>This product has heavy variation; expect lines, marks and spots as part of the product range.</p>