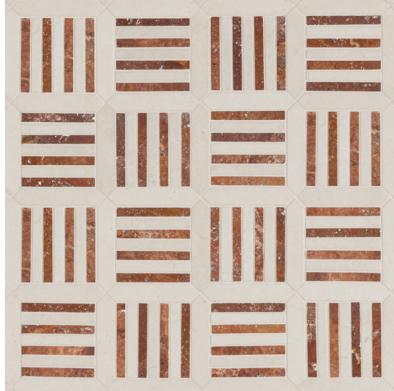


INTERLACE

A playful and modern twist on the classic basketweave. White Sand marble forms the backdrop for Interlace's two distinct colorways; Lilac, a subtle tapestry woven with plum-veined marble, and Red Travertine, a warm, rustic blend offering color and contrast. The interplay of these stones marries timeless elegance and contemporary design, creating a sophisticated, textile-inspired mosaic. Each 8-11/64" x 8-11/64" tile features a honed finish.



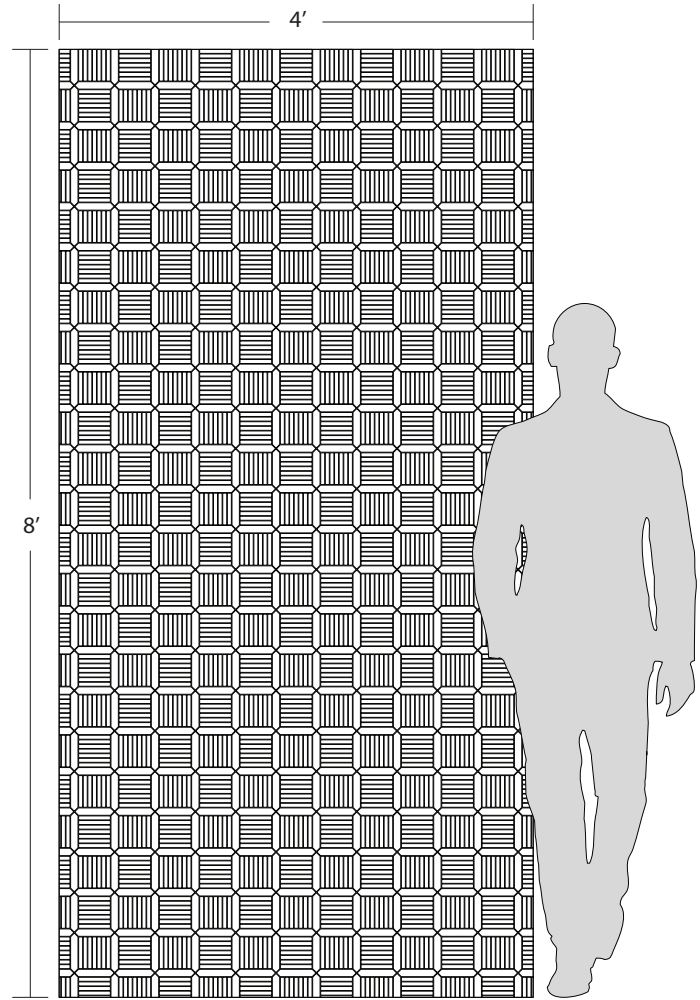
INTERLACE



Red Travertine - Honed



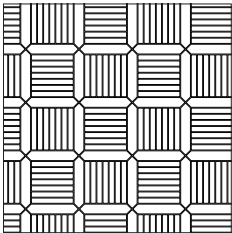
Lilac - Honed



APPLICATIONS									VARIATION ²				TAILORED TO CUSTOMIZATION						
INTERIOR FLOOR	INTERIOR WALL	SHOWER WALL	SHOWER FLOOR	EXTERIOR FLOOR	EXTERIOR WALL	POOL/ FOUNTAIN	COUNTER TOP	FIREPLACE SURROUND	V1	V2	V3	V4	CARPET CUTTING	FIELD	FINISH	MOSAIC	SADDLE	VANITY TOP	WATERJET
Light/ Medium Commercial	All	Yes, including steam ¹	Yes, including steam ¹	No	Yes, non freeze thaw	No	Yes	Yes					/						

INSTALLATION/MAINTENANCE										
SETTING MATERIAL	GROUT	GROUT JOINT	MEMBRANE	CAULK	SEALER	CLEANER	INSTALLATION INSTRUCTIONS	LAYOUT	DRY LAYOUT	QR CODE
Ardex X77 White Microtec Fiber Reinforced Mortar ³	Ardex FG-C Microtec Unsanded ⁴	As established on sheets	Ardex 8+9	Ardex SX	AquaMix Sealers Choice Gold	AquaMix Concentrated Cleaner	TCNA Handbook	Maintain Sheet Orientation	Required	

MOSAIC



8 11/64" x 8 11/64" x 3/8"
(0.4636 SF/PC)
Honed

NOTES

¹ Shower: Product must be installed in accordance with current TCNA Handbook Stone Methods.
² Red Travertine Interlace is V2.
³ Alternate Mortar - Mapei Kerabond White w/Keralastic Additive or Ardex WA Epoxy
⁴ Alternate Grout - Mapei Ultracolor Plus FA or Ardex FL Rapid Set Sanded

Tech Notes: Individual sheets of this mosaic are not square. Sheets are irregular and combine into a seamless interlocking pattern. Plan your layout accordingly. Pattern is directional, maintain sheet orientation during installation. White mortar is recommended for natural stone.