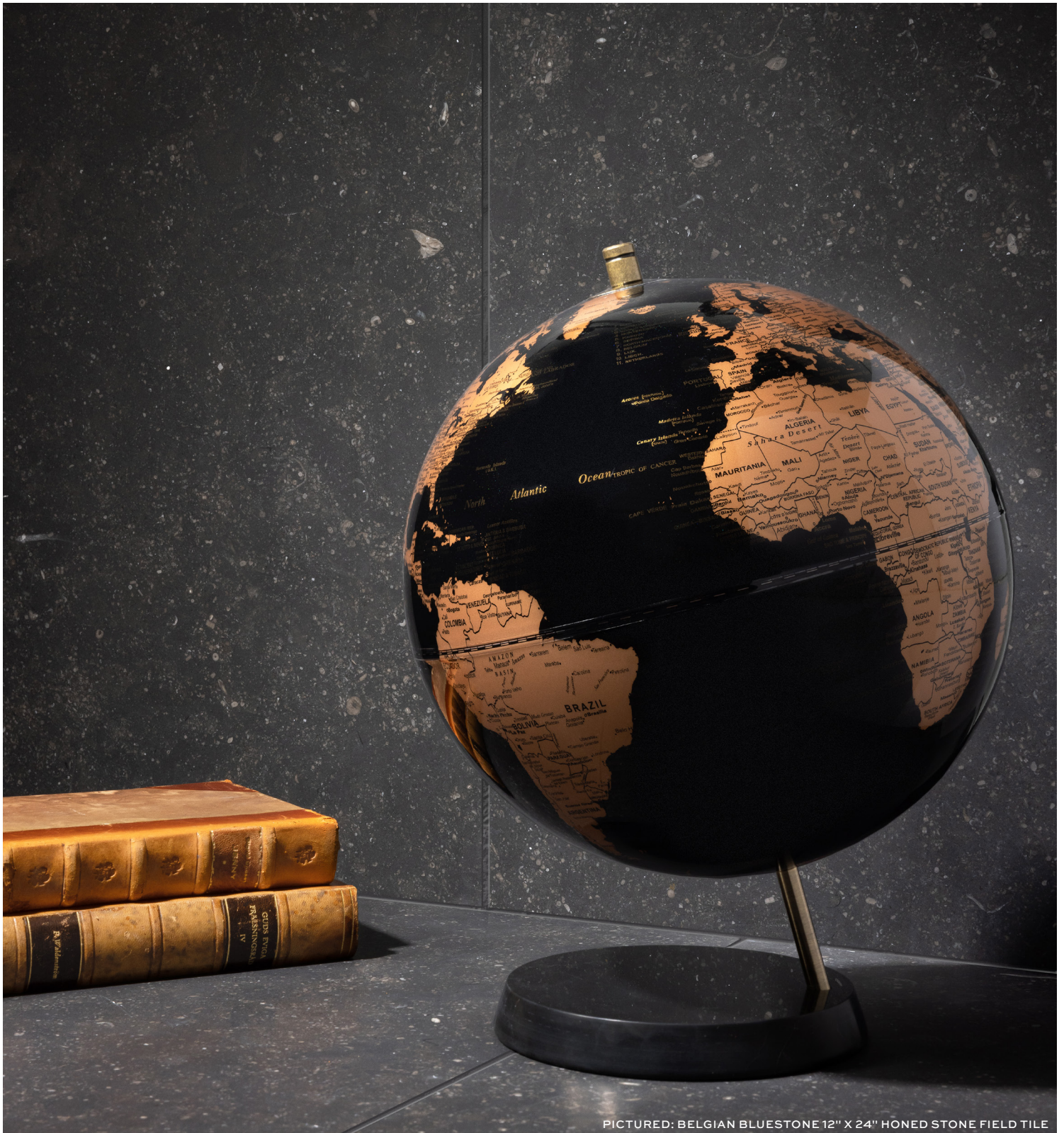


# BELGIAN BLUESTONE

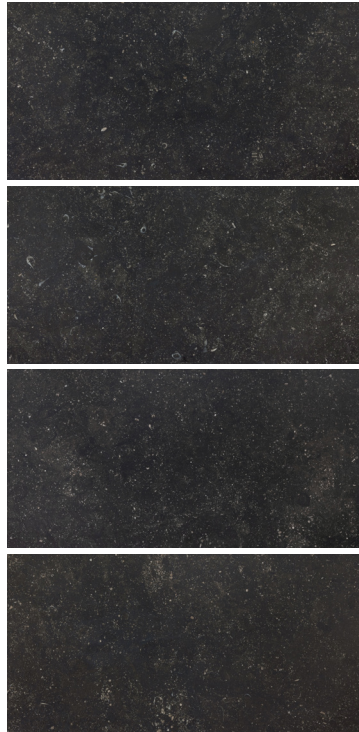
---

Belgian Bluestone's unmistakable smoky indigo hue is a classic in design and architecture. Minute marine fossils speckle the surface, adding another layer of interest to this timeless material. Stocked in multiple formats, the natural drama and durability of this limestone make it an excellent choice for a wide variety of applications.

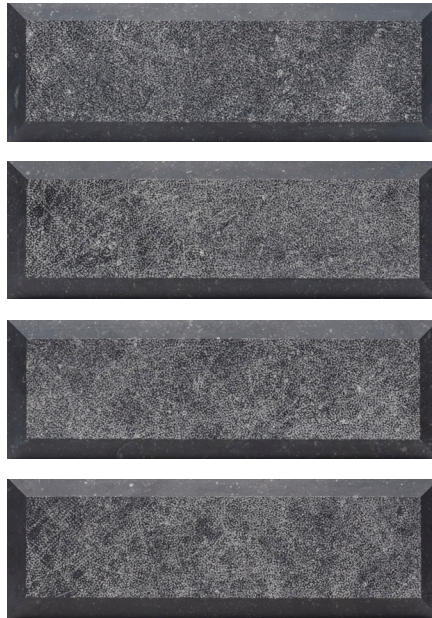


PICTURED: BELGIAN BLUESTONE 12" X 24" HONED STONE FIELD TILE

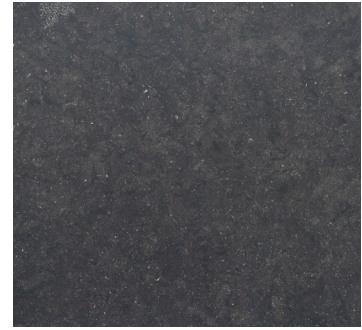
# BELGIAN BLUESTONE



Field Tile - Honed  
Aris Edge



Pique Bevel Field Tile - Polished  
Beveled Edge



Odessa Black Field Tile - Roman Antiqued  
Straight Edge



Odessa Black Field Tile - Roman Antiqued  
Chiseled Edge

APPLICATIONS									VARIATION				TAILORED TO CUSTOMIZATION <sup>4</sup>		
INTERIOR FLOOR	INTERIOR WALL	SHOWER WALL	SHOWER FLOOR	EXTERIOR FLOOR	EXTERIOR WALL	POOL/ FOUNTAIN	COUNTER TOP	FIREPLACE SURROUND	V1	V2	V3	V4	CARPET CUTTING	FIELD	
Medium Traffic Commercial <sup>1</sup>	All	Yes, including steam <sup>2</sup>	Yes, mosaic formats only <sup>3</sup>	No	No	No	Yes <sup>3</sup>	Yes					FINISH	MOSAIC	
													SADDLE	VANITY TOP	
													WATERJET		
INSTALLATION/MAINTENANCE										AVAILABLE SIZES					
SETTING MATERIAL	GROUT	GROUT JOINT	MEMBRANE	CAULK	SEALER	CLEANER	INSTALLATION INSTRUCTIONS	LAYOUT	DRY LAYOUT						
Ardex X77 White Microtec Fiber Reinforced Mortar <sup>2</sup>	Ardex FL Rapid Set Sanded <sup>5</sup>	1/16" minimum	Ardex 8+9	Ardex SX	AquaMix Sealers Choice Gold	AquaMix Concentrated Stone & Tile Cleaner	TCNA Handbook	No	Partial <sup>6</sup>	ODESSA BLACK FIELD TILE- ROMAN ANTIQUED 18" x 18" x 3/8" Chiseled Edge	ODESSA BLACK FIELD TILE- ROMAN ANTIQUED 18" x 18" x 3/8" Roman Antiqued	PIQUE BEVEL FIELD TILE- POLISHED 4" x 12" x 3/16" 3/8" PROJECTION Bevel Edge	FIELD TILE-HONED 12" x 24" x 3/8" Aris Edge		
NOTES															
<sup>1</sup> Subject to visible scratching. Not applicable for Pique Bevel <sup>2</sup> Pique Bevel: Conventional only Product must be installed in accordance with current TCNA handbook stone methods. White mortar is recommended for natural stone <sup>3</sup> Subject to soap and calcium build up <sup>4</sup> Aris and Straight Edge: Field, Mosaic, Waterjet / Slab: Field, Saddle, Vanity Top, Waterjet / Pique Bevel and Chiseled Edge: None <sup>5</sup> Pique Bevel: Ardex X77 White Microtec Fiber Reinforced Mortar, Ardex X4 White Tile & Stone Mortar, or Mapei Kerabond White w/Keralastic Additive Chiseled, Straight & Aris Edge: Ardex X77 White Microtec Fiber Reinforced Mortar, Ardex X5 White Medium Bed Mortar, or Mapei Ultraflex LFT White <sup>6</sup> Layout for color and vein selection before installation Tech note: Subject to visible scratching - Bag grouting recommended for Pique Bevel															