

Phender Pro installation

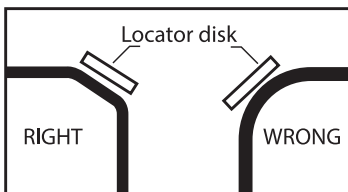
Recommended tools

- Marine grade silicone
- Loctite (Blue)
- Dust rag
- 3/8" or 1/2" allen key
- Painter tape
- Pencil
- Drill bit (spade bit, hole saw, or multi-tooth forstner bit)
- Phender Pro install tool (1/2" or 3/8" depending on which kit you purchase)

Pre-installation

Prior to installation, you will need to figure out where you will be installing your Phender Pro receivers. Consider the following:

- Each fender should be in the right location to fend off the boat.
- Use the locator disk (included) to insure the hole will be drilled in a flat area. See the diagram below.



- Be sure to check behind where the hole will be drilled for structural pieces, cables, etc.
- Put the receivers on the same spot on each side of the boat.

Drill the holes

Once you have decided on where to place your Phender Pro quick release receivers, it's time to drill the holes.

- Using the locator disk, mark dead center of the receiver with a pencil.
- 1/2" receiver = 1" hole (25mm)
- 3/8" receiver = 3/4" hole (19mm)
- Center punch each hole so the drill won't wander (a small nail can substitute for a center punch).

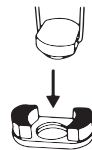
- Drill the hole from the outside toward the inside. Be sure to stop about a third of the way through.
- Use the hole in the center to drill from the inside just enough to score the fiberglass.

Note: Always finish drilling from the outside. This will minimize the risk of chipping the gel-coat.

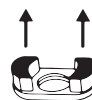
Installing the receiver

A. Clean inside and outside surfaces

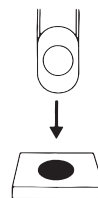
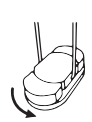
B. Screw install tool into the brass nut plate



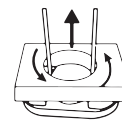
C. Remove protective film from adhesive tape



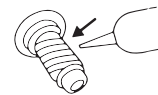
D. Pivot nut plate, insert in hole, pivot back and pull several times to adhere tape on back side of fiberglass



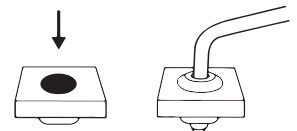
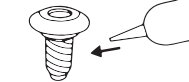
E. Unscrew install tool



F. Apply marine grade silicone to underside of receiver head



G. Apply Loctite to receiver threads, screw into brass nut plate and tighten with allen key



Unsure... please refer to video:

