

The Architect's Newspaper

January/February 2022

www.archpaper.com

@archpaper

\$3.95

ODA's Fort Lauderdale tower is missing something page 8

A Florida architect glimpses the future of climate change page 24



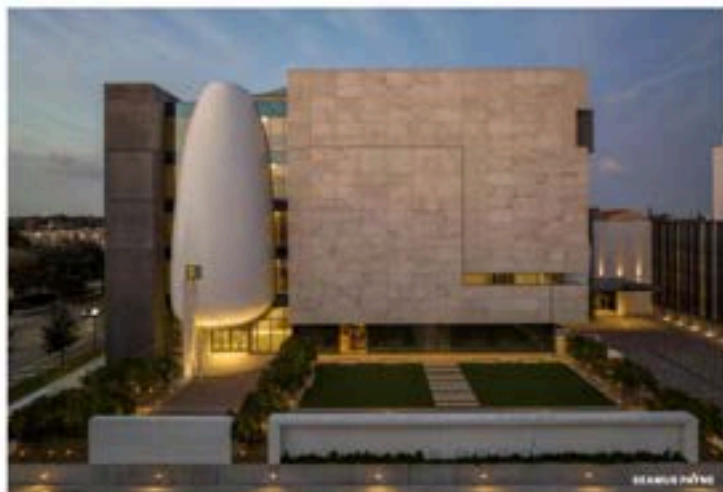
Capturing Tampa's housing boom in two case studies page 26

The National Building Museum takes on the Border Wall page 45

4 Diary
5 Eavesdrop
12 Anthology
40 Marketplace
42 Highlights

Florida All-Stars

Local talents come together to create a world-class museum. Read on page 13.



No Rose without a Thorn

David Adjaye's pink-hued Winter Park Library & Events Center finally debuts in Florida.

After numerous delays and more than a whiff of controversy, the Adjaye Associates-designed Winter Park Library & Events Center opened last month in the Orlando-adjacent Florida city. A self-described "intergenerational community hub," the \$41.7 million project spans three rose-pigmented concrete pavilions on a lakefront site in Winter Park's 23-acre Martin Luther King Jr. Park.

David Adjaye, the Ghanaian British principal of Adjaye Associates, called the project "a new typology of the 21st-century knowledge campus." It replaces Winter Park's existing public library on East New England Avenue, completed in the late 1970s and expanded in the 1990s to replace another, older facility.

"I designed the Winter Park Library & Events Center as a collection of unique spaces and the additive ways in which their differences could overlap, coming closer to each other," Adjaye continued on page 6



Where the Sun Shines

The phrase "midcentury modern" immediately calls up visions of California. But in the 1950s and early 1960s, Florida experienced a design awakening of its own. Read on page 21.



Gainesville gains a new academic center

Read on page 10.



Residential Construction

Read on page 34.



PSRST STD
US POSTAGE
PAID
PERMIT
NO. 336
MIDLAND, MI



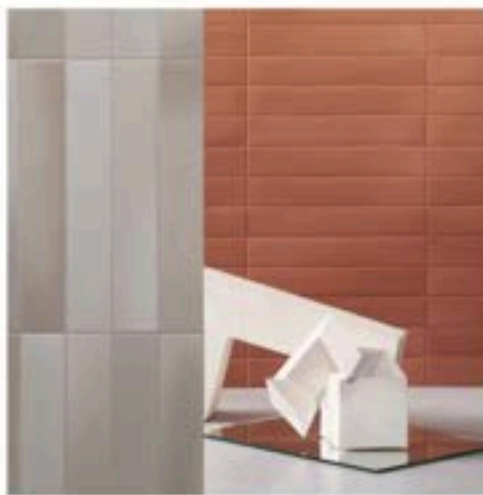
The Architect's Newspaper
21 Murray St., 5th Floor
New York, NY 10007

Surfaces

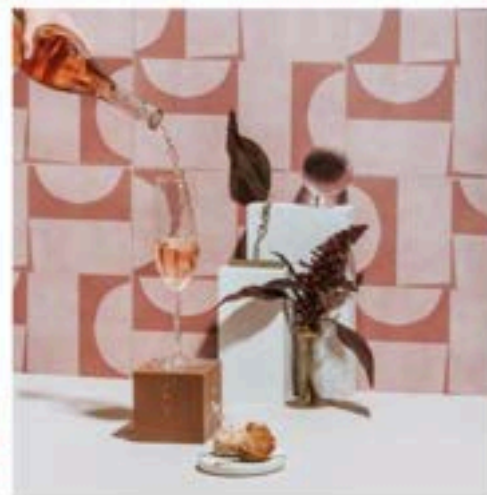
These cleverly engineered surfaces—produced using natural, composite, and synthetic components—are both stylish and incredibly durable. As earth tones, a subtle organicism, and bold geometric forms return to the fore, these materials reflect changing trends but also come in a wide range of variants for those looking to go their own way. *By Adrian Medineer*



Living Impressions
Collection
Formica
formica.com



AURORA
Nemo Tile
nemotile.com



Puzzle Pieces Collection
LIVDEN
livden.com



Silestone Ethereal Noctis
Cosentino
cosentino.com



Light Haze
Durasein
durasein.com



EARTHYTECH
Florim
florim.com

ALL IMAGES COURTESY THE
RESPECTIVE MANUFACTURERS