

NEW OLD HOUSE

Inspired Traditions

TIMELESS
DESIGN,
PERSONAL
HOMES

best in **DESIGN**

FOR NEW HOMES, RENOVATIONS & INTERIORS

successful
KITCHENS

BEAUTIFUL ISLANDS • BREAKFAST NOOKS
CLASSIC BACKSPASHES • CABINET TRENDS

SEE INSIDE lighting + built-ins + great rooms



1.



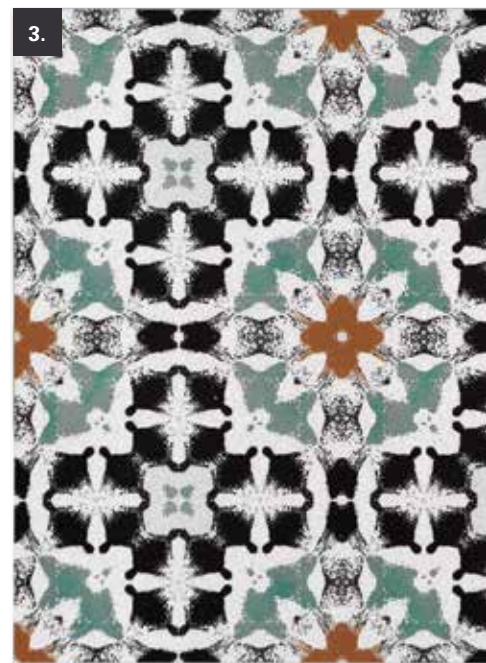
2.



5.

Holding Patterns

1. **ANN SACKS** Davina field tile in Zinc is inspired by Old World Italian villas and terrazzo; it's suitable for use on shower walls and high-temp zones including fireplace surrounds. annsacks.com
2. **STONE IMPRESSIONS** Echoing floral shapes with a modern twist, the Mulholland tile in Cypress on Limestone from the Artisan Stone Tile by Stone Impressions line, is the perfect accent for the master bath or bar. stoneimpressions.com
3. **LIVDEN** Infuse modern whimsy and personality in the kitchen or powder room with the Elly Floret Tile in Maui Sunset, crafted with a blend of 65–66% post-consumer recycled glass, granite, quartz, quartzite, and pre-consumer porcelain. livden.com
4. **ANN SACKS** The clean-lined Kannon field tile in White Brick takes hints from Japanese Raku Pottery. annsacks.com
5. **LIVDEN** San Diego tile duo Livden created the eco-friendly Bella Collection Cross Tile, in Pear, as an iteration of a traditional ikat pattern —made with a Polar Ice Terrazzo tile base, a blend of 65–66% post-consumer recycled glass, granite, quartz, quartzite, and pre-consumer porcelain. livden.com



3.



4.



Right at Home

1. SFERRA Woven in a checkered, basketweave pattern, the linen and wool blend Palmilla throw can be used on the end of the guest bed, or as an extra layer for movie nights. sferra.com
2. SERENA & LILY Fashioned with petite French knots for a textural look, the Pryce pillow in Ivory Sand adds a subtle hint of neutral color. serenaandlily.com
3. BUNNY WILLIAMS The Bowen Armchair has a tailored but relaxed look and is available in a variety of fabric options. bunnywilliamshome.com
4. BAKER FURNITURE Artfully echoing the organic shape of a drop of water, the Dew Drop Mirror is framed in cast bronze and designed by Barbara Barry for Baker. bakerfurniture.com
5. BAKER FURNITURE The Petal dining table was designed by Barbara Barry for Baker and takes cues from a dress form with scallops and hints of brass. bakerfurniture.com



playing WITH PRINTS

1. **SCHUMACHER** Depicting abstract arches, Quansoo wallcovering in Ivory on Neutral is based on a block print by Brooklyn-based artist Caroline Z. Hurley. fshumacher.com

2. **SCHUMACHER** Part of the Copacabana collection, the Zenada wallcovering in Carbon features a modern frond pattern. fshumacher.com

3. **SARAH VON DREELE** The Rachel wallpaper in putty is digitally printed using water-based inks. sarahvondreele.com

4. **MORRIS & CO.** Perfect as an accent wall in the library or den, the sophisticated Snakeshead wallpaper in Stone/Cream by Morris & Co. is available as a fabric, too. morrisandco.sandersondesigngroup.com

5. **MORRIS & CO.** Willow wallpaper pattern dates to 1874; it's shown in Camomile. morrisandco.sandersondesigngroup.com

