

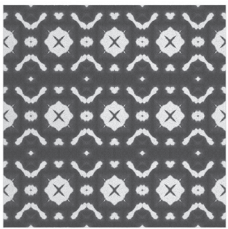
# THE BELLA COLLECTION

AVAILABLE SIZES & TILE BODIES:  
12x12 POLAR ICE TERRAZZO  
CONTACT US FOR CURRENT LEAD TIMES

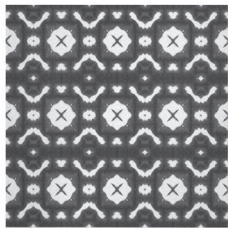


## SERIES: SPANISH SUN

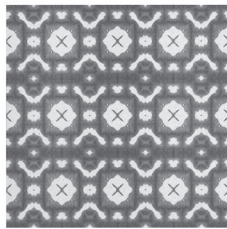
## SERIES: SPRING



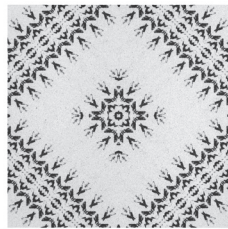
INDIGO



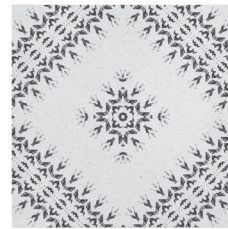
IVORY



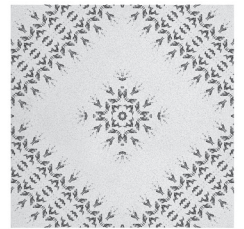
PEAR



INDIGO



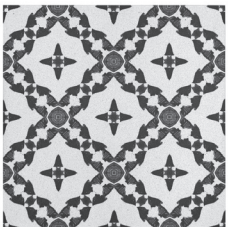
IVORY



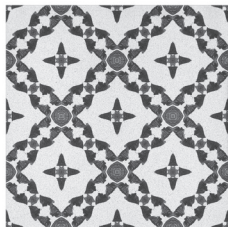
PEAR

## SERIES: CROSS

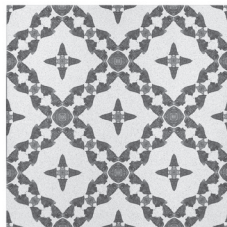
## SERIES: ARABESQUE



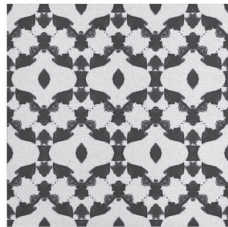
INDIGO



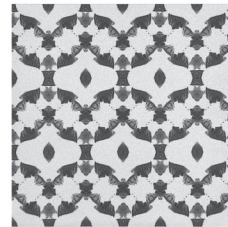
IVORY



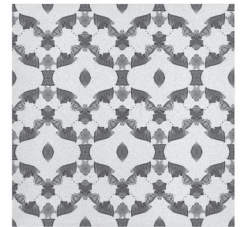
PEAR



INDIGO



IVORY



PEAR

### APPROVED INSTALLATION SPACES

- INTERMITTENT WET SPACES
- INTERIOR WALL APPLICATIONS
- LIGHT TRAFFIC RESIDENTIAL FLOORING
- COMMERCIAL WALLS

### NOT RECOMMENDED INSTALLATION SPACES

- SUBMERGED WATER APPLICATIONS (POOLS, FOUNTAINS)
- SHOWER FLOORS
- STEAM SHOWERS OR SAUNAS
- OUTDOOR SPACES
- COMMERCIAL FLOORS

## SEALANT PERFORMANCE CHARACTERISTICS

Substrate Tested:	Steel
Surface Preparation:	Wash with water based biodegradeable neutral cleaner
Application:	Direct to surface
Tensile Adhesion: (ASTM D4541)	1600 - 1800 psi
Abrasian Resistance: (ASTM D4060)	33 mg loss
Condensing Humidity 1000 Hours: (ASTM D2247)	Rusting: None Blistering: None
Impact Resistance: (ASTM D2794)	160 in-lbs.
Flexibility - Conical Bend: (ASTM D522)	% Elongation: >32% Resistance to Crackings: <1/8" diameter
Pencil Hardness: (ASTM D3363)	Scratch: 2H Gouge : 3H
MEK Double Rubs: (Internal Testing)	1000+
Salt Fog 1000 Hours: (ASTM B117)	Rusting: 10 (None) Scribe Undercutting: <0.5 mm
Water Vapor Transmission: (ASTM E96)	2.4 perms
QUV 1000 Hours: (ASTM D4587)	Passed SSPC Paint 36 Standard of:
Color Change:	Less than 2.0 Delta E Change
Gloss Change:	Less than 30 Gloss Change
Flame Developed: (ASTM 84)	10 - Class A
Smoke Spread: (ASTM 84)	5 - Class A

## CARE AND MAINTENANCE

- CLEAN WITH A SOFT CLOTH, WARM WATER, AND NON-ACIDIC SOAP OR A PH NEUTRAL STONE CLEANER.
- TILE SURFACES SHOULD BE PROTECTED FROM SCRATCHES.
- AVOID ANY CARE PRODUCTS THAT CONTAIN THE FOLLOWING: ABRASIVES, PHOSPHORIC ACIDS, SCOURING POWDERS, CHLORINE, ACETONE, OR GLYCOLIC ACIDS. AVOID BRUSHES AND SCOURING PADS.
- NEVER USE AN ELECTRIC SCRUBBER OR BUFFER, ROTARY TOOLS, ETC. ON PRODUCT.
- PRODUCT SHOULD BE RESEALED ON A REGULAR BASIS. FOLLOW MAINTENANCE SCHEDULE RECOMMENDED BY SEALER MANUFACTURER.