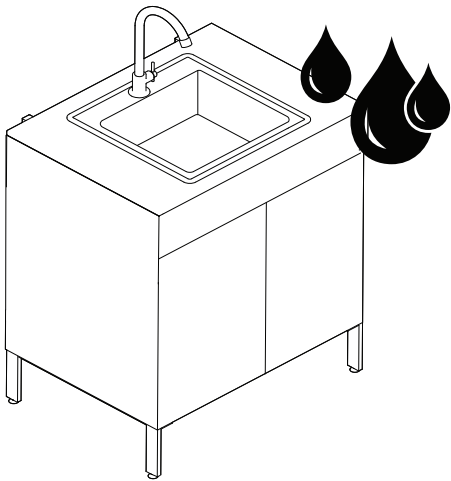


Product Instructions, Care & Maintenance

This manual will cover everything you need to know about operating your Nessel handwashing station.

Section 1: Sink & Countertop

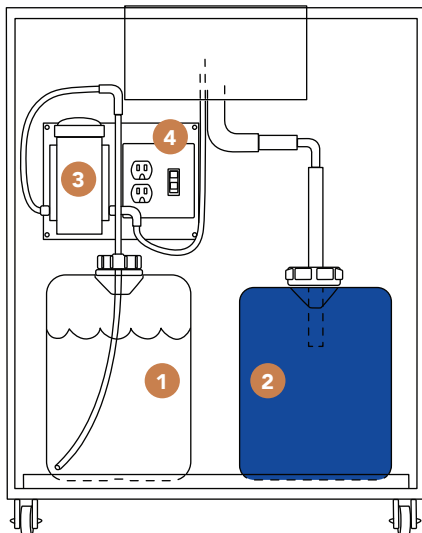


Although you do not see a typical added "countertop," these surfaces are designed to get wet! Made of a waterproof plywood core with a plastic laminate coating.

The top surface, sink, and cabinet can be cleaned as needed with disinfectant, soap or medical-grade cleaner.

Section 2: Setup Instructions & Portable Plumbing

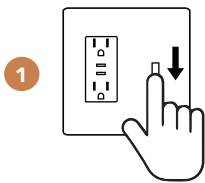
Get familiar with portable plumbing! Please review the equipment below and start by adding water to the fresh tank **before plugging in and turning on the pump**.



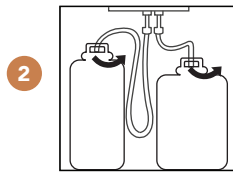
- 1 5 Gallon Freshwater Tank
Setup Step 1: Unscrew the top of freshwater tank, pull out tubing, and fill tank at clean water source.
- 2 7 Gallon Waste Tank
Setup Step 2: Please ensure the waste tank is emptied completely every time any fresh water is added to the system!
- 3 Water Pump
- 4 Pump Switch
Setup Step 3: Confirm unit is plugged into a power outlet, and flip the switch to turn on the water pump.



Section 3: Emptying and Refilling Tanks



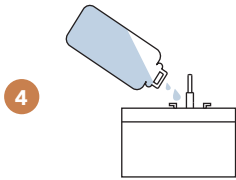
Check pump is off by flipping switch to off position.



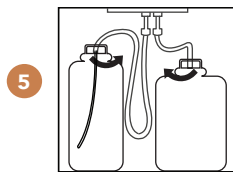
Unscrew water tanks inside cabinet & slide out from cabinet.



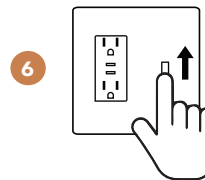
Bring freshwater tank to clean water source for refill.



Bring waste water tank to existing drain for dumping.



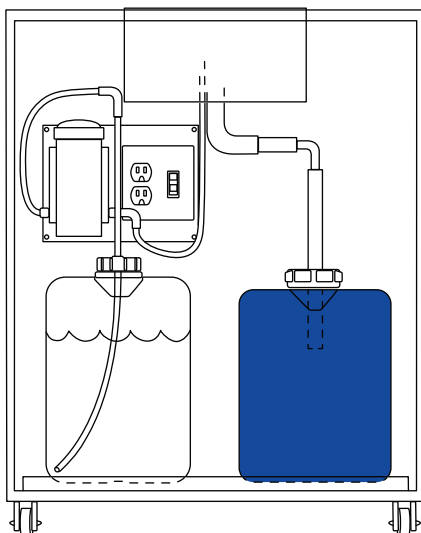
Replace tanks inside cabinet, reattach by screwing on tubing tops, re-insert tubing inside tanks.



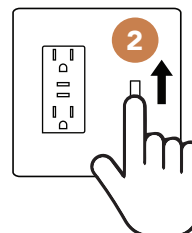
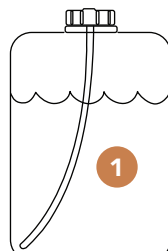
Flip switch to turn pump on.

Section 4: Water Pump

The pump is controlled through built-in pressure sensing. The pump can be left on throughout the day, note that when switched to the on position the pump will continually be working to sense water pressure. The sound you may hear coming from the pump is normal.



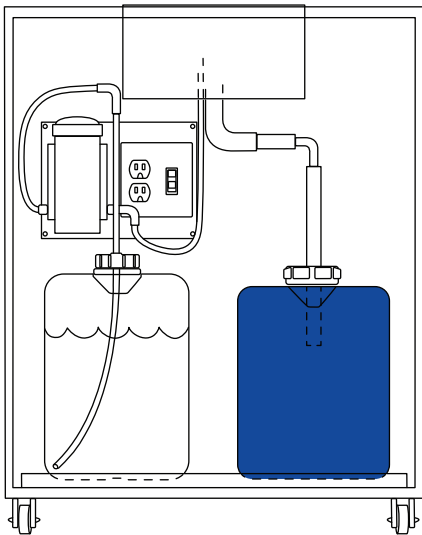
Please fill the water tank 1st before flipping the switch.



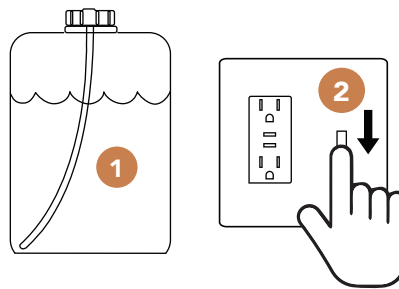
The sound you hear coming from the pump is normal. This indicates that the pump is working to sense water pressure.

Section 3: Water Pump

The pump switch turns the water pump on and off. The pump is controlled through built-in pressure sensing. **The pump can be left on throughout the day, note that when switched to the on position the pump will continually be working to sense the water pressure.** The sound you may hear coming from the pump is normal.

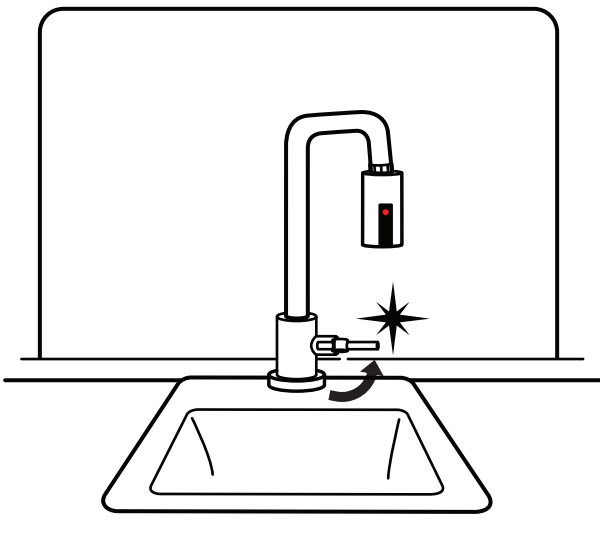


Please fill the water tank 1st before flipping the switch.



The sound you hear coming from the pump is normal. This indicates that the pump is working to sense water pressure.

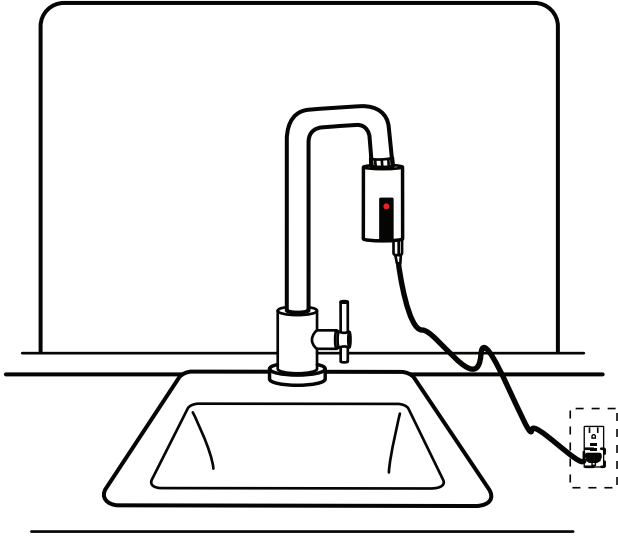
Section 4: Touch-less Faucet Accessory



The touch-less faucet accessory should be fully charged upon arrival. In order for it to work to activate the water, **the water pump must be turned on and the faucet handle must stay in the "on" position.**

The touch-less sensor can be removed at any time and converted back to a typical faucet. Please look inside your cabinet for the replacement faucet head.

Section 4: Touch-less Faucet Accessory (Cont'd)

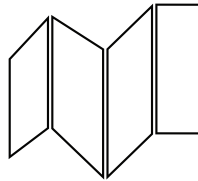


Charging Your Sensor

Inside your cabinet you will find a 10ft micro usb charger for charging your sensor.

When the battery is low, the indicator will blink 5 times as a reminder to recharge, meanwhile it will still function during a period of time.

When battery reaches its low limit, indicator will blink 10 times quickly as an urgent reminder to charge the sensor.



Please refer to the small pamphlet inside your cabinet for further instructions related to the touch-less sensor cleaning operation, and replacement.

Have any questions? Contact our customer service!

Please don't hesitate to reach out at any time with any questions about your Nessel handwashing station. We are here to help.

Nessel Customer Service:

(203) 529-7454

hello@nessel.com