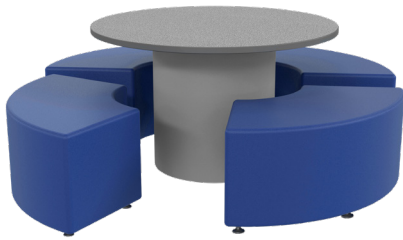


SONIK® SOFT SEATING ROUND TABLE

MADE BY  MARCO

FEATURES

- Particleboard with thermo-fused melamine top and bottom
- 3mm PVC edgeband
- Base frame made of 3/8" bendable plywood with foam padding
- High durability vinyl upholstery
- Carpin Glides



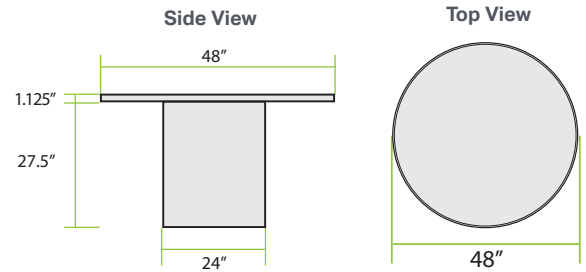
Shown here with 24" Curve Ottomans.



Round Table

Model LF2666

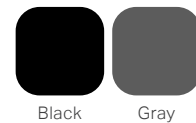
MODEL	HEIGHT	WIDTH	DEPTH	WEIGHT	F.C.
LF2666-xx-Bxxx	29"	48"	48"	105 lbs.	250
LF2666-xx-Axxx	26"	48"	48"	105 lbs.	250
LF2666P-xx-Bxxx	29"	48"	48"	105 lbs.	250
LF2666P-xx-Axxx	26"	48"	48"	105 lbs.	250



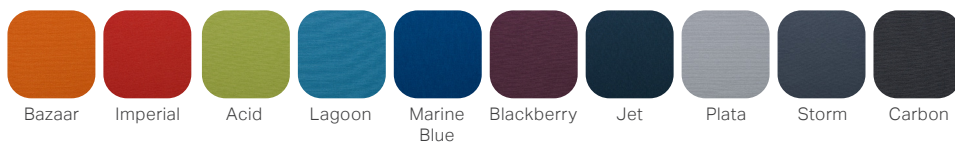
TABLETOP LAMINATES



EDGE BAND OPTIONS



BASE VINYL COLOR OPTIONS



OPTIONAL ACCESSORIES



POP-UP POWER MODULE

Has 2- AC Outlets and 2- USB Ports.
Order Model LF2666P.

LEAD-TIME: Models ordered with Standard Colors ship within 4-6 weeks. Models ordered with Special Order Colors ship within 6-8 weeks. **Note:** To ship in 4-6 weeks, all products on a purchase order MUST be 6-week lead-time or less. If any item on a purchase order is not considered a 6-week lead-time or less, the entire order will ship at the time the longest lead-time item is available.

