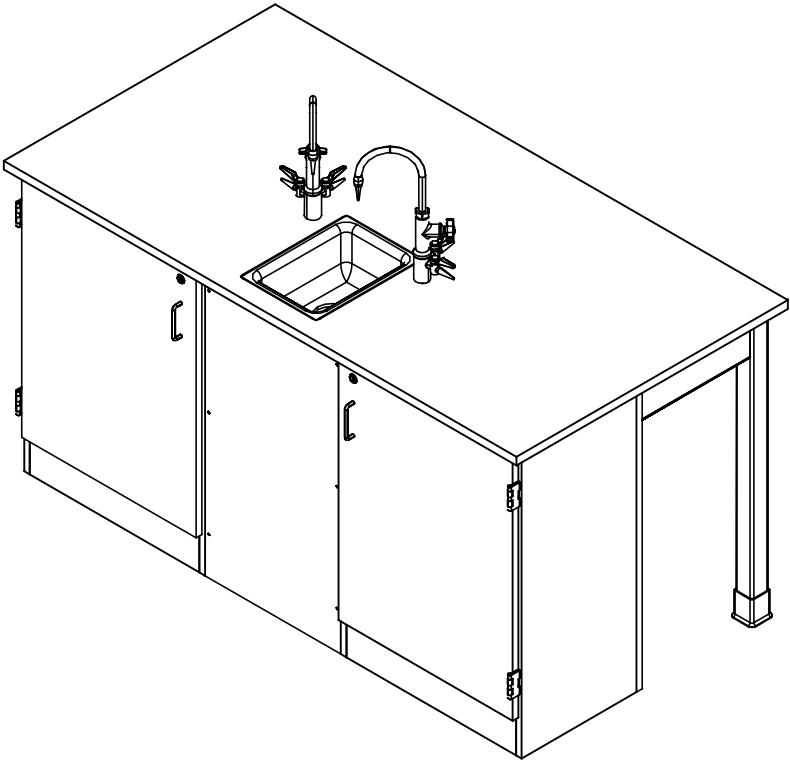


# FORWARD VISION III

2924K, 2924KF, 2926K, 2926KF, 2964K, 2964KF, 2966K, & 2966KF SERIES

## ASSEMBLY INSTRUCTIONS



**NOTE:**

1. MODEL VIEWS MAY NOT REPRESENT EXACT MODEL PURCHASED

A	CREATED DRAWING	11/8/16	EMR	-
REV.	DESCRIPTION	DATE	NAME	ECN NO.
REVISION LEVEL				

ALL DIMENSIONS ARE IN INCHES UNLESS NOTED OTHERWISE DECIMALS: .X = ± .030 .XX = ± .020 .XXX = ± .010 ANGLES: = ± 1° CABINET SQUARENESS: = ± .0625				DWN BY: EMR	DATE DWN: 11/8/16
CONFIDENTIAL: ALL DESIGN RIGHTS RESERVED THE INFORMATION, DATA, DESIGN, AND DRAWINGS EMBODIED IN THIS DOCUMENT AND ALL REPRODUCTIONS THEREOF ARE THE EXCLUSIVE PROPERTY OF DIVERSIFIED WOODCRAFTS, INC.				APR BY:	DATE APR:
THESE DOCUMENTS ARE SUPPLIED WITH THE UNDERSTANDING THAT THEY WILL NOT BE DISCLOSED TO THIRD PARTIES WITHOUT WRITTEN CONSENT OF DIVERSIFIED WOODCRAFTS, INC. ANY REPRODUCTION IN PART OR WHOLE WITHOUT WRITTEN CONSENT IS SUBJECT TO LEGAL ACTION.				APR BY:	DATE APR:



300 South Krueger Street  
Suring, WI 54174  
diversifiedwoodcrafts.com

TITLE:  
FORWARD VISION III  
ASSEMBLY INSTRUCTIONS

DRAWING NUMBER:  
FORWARD VISION III

SCALE:  
NTS

SHEET:  
1 OF 13

REVISION:  
REV A

**TOOLS REQUIRED**

½" WRENCH
½" SOCKET AND TORQUE WRENCH - OPTIONAL
CONTACT CEMENT
SCREW DRIVER
C-CLAMPS
SHIM STOCK (IF NEEDED)

**ASSEMBLY COMPONENTS**

ITEMS INCLUDED	PART #	PART DESCRIPTION	QTY
TOP	VARIES	TOP, (STYLE VARIES), 1.00X36X68,BLK, (EITHER FIXTURE OR FLAT)	1
CABINET	N/A	24"W X 35"H X 15.25"D	2
REMOVABLE PANEL	N/A	18"W X 35"H X 0.75"D	1
BACK PANEL	N/A	66"W X 35"H X 0.75"D	1
SCREWS - REMOVABLE PANEL	100495	SCREW,#10X1- ½ PHIL TR. SMS,ZN	6
SCREWS - BACK PANEL	100478	SCREW,#8X1 ¼ SQ. WASHER FLAT HEAD	12
LONG APRON	N/A	LONG APRON - 0.81"THK X 4.50"W 61.50"L	1
SHORT APRON	N/A	SHORT APRON - 0.81"THK X 4.50"W X 14.563"L	2
L BRACKET	100355	BRACKET, RAIL 1.25X1.25X4.25	2
SCREWS - L BRACKET	100649	SCREW,#8X¾ PHIL TRUSS HEAD SMS	8
BRACKET - CORNER LEG	100077	CORNERS,STEEL TABLE APRON	2
SCREWS - CORNER LEG	100037	SCREW,#10X⅝ QUAD PNHD LUB	8
LEG	500101	LEG,OAK 2.25X2.25X34.25	2
LEG HARDWARE	520001	LEG HARDWARE KIT, 1 LEG	2
LEG BOOT	100076	LEG BOOT,BLK RUBBER	2
SILICONE	100711	SILICONE,SEALANT,CLEAR	1
RUBBER BASE MOLDING	100283	RUBBER BASE MOLDING (SOLD BY FOOT)	14
STAINLESS STEEL CORNERS	100057	CORNER-STAINLESS STEEL, BASE	4
SCREWS - BASE	100064	SCREW,#6X½ PTH SMS SS SCREW	16

**NOTE:**

1. TOPS ARE EITHER PHENOLIC OR EPOXY.
2. \*\*XX\*\* INDICATES ITEMS USED ONLY FOR THE "K" SERIES.

ALL DIMENSIONS ARE IN INCHES UNLESS NOTED OTHERWISE  
 DECIMALS: X = ± .030  
 XX = ± .020  
 XXX = ± .010  
 ANGLES: = ± 1°  
 CABINET SQUARENESS: = ± .0625

DWN BY: EMR DATE DWN: 11/8/16  
 APR BY: DATE APR:  
 APR BY: DATE APR:

CONFIDENTIAL:  
 ALL DESIGN RIGHTS RESERVED  
 THE INFORMATION, DATA, DESIGN, AND DRAWINGS EMBODIED  
 IN THIS DOCUMENT AND ALL REPRODUCTIONS THEREOF ARE  
 THE EXCLUSIVE PROPERTY OF DIVERSIFIED WOODCRAFTS, INC.

THESE DOCUMENTS ARE SUPPLIED WITH THE UNDERSTANDING  
 THAT THEY WILL NOT BE DISCLOSED TO THIRD PARTIES WITHOUT  
 WRITTEN CONSENT OF DIVERSIFIED WOODCRAFTS, INC. ANY  
 REPRODUCTION IN PART OR WHOLE WITHOUT WRITTEN  
 CONSENT IS SUBJECT TO LEGAL ACTION.



300 South Krueger Street  
 Suring, WI 54174  
 diversifiedwoodcrafts.com

TITLE:  
 FORWARD VISION III  
 TOOLS AND ASSEMBLY COMPONENTS

DRAWING NUMBER:

FORWARD VISION III

SCALE:

NTS

SHEET:

2 OF 13

REVISION:

REV A

A	CREATED DRAWING	11/8/16	EMR	-
REV.	DESCRIPTION	DATE	NAME	ECN NO.
REVISION LEVEL				

## ASSEMBLY COMPONENTS

ITEMS INCLUDED	PART #	PART DESCRIPTION	QTY
ELECTRICAL BOX	100033	ELECTRICAL BOX 3.00X2X2.5 DEEP	1
ELECTRICAL OUTLET	100034	ELEC,OUTLET,GFI,20A 125V,BLK	1
**FIXTURE - FAUCET**	100074-BKR	FIXTURE,L65-WSA-DIV (MULTI-SERVICE)	2
**FIXTURE - SINK**	100691	SINK,EPOXY L3,BLK	1
**FIXTURE - SINK TRAP**	100056	SINK TRAP,PLASTIC ADJUSTABLE	1
**FIXTURE - SINK STOPPER**	100112	SINK STOPPER 1 1/2,BLK	1
**FIXTURE - STRAINER**	100055	SINK,OUTLET/STRAINER EPOXY,BLK	1

### NOTE:

1. TOPS ARE EITHER PHENOLIC OR EPOXY.
2. \*\*XX\*\* INDICATES ITEMS USED ONLY FOR THE "K" SERIES.

A	CREATED DRAWING	11/8/16	EMR	-
REV.	DESCRIPTION	DATE	NAME	ECN NO.
REVISION LEVEL				

ALL DIMENSIONS ARE IN INCHES UNLESS NOTED OTHERWISE	DWN BY: EMR	DATE DWN: 11/8/16
DECIMALS: X = ± .030 XX = ± .020 XXX = ± .010	APR BY:	DATE APR:
ANGLES: = ± 1°	APR BY:	DATE APR:
CABINET SQUARENESS: = ± .0625		

CONFIDENTIAL:  
ALL DESIGN RIGHTS RESERVED  
THE INFORMATION, DATA, DESIGN, AND DRAWINGS EMBODIED IN THIS DOCUMENT AND ALL REPRODUCTIONS THEREOF ARE THE EXCLUSIVE PROPERTY OF DIVERSIFIED WOODCRAFTS, INC.

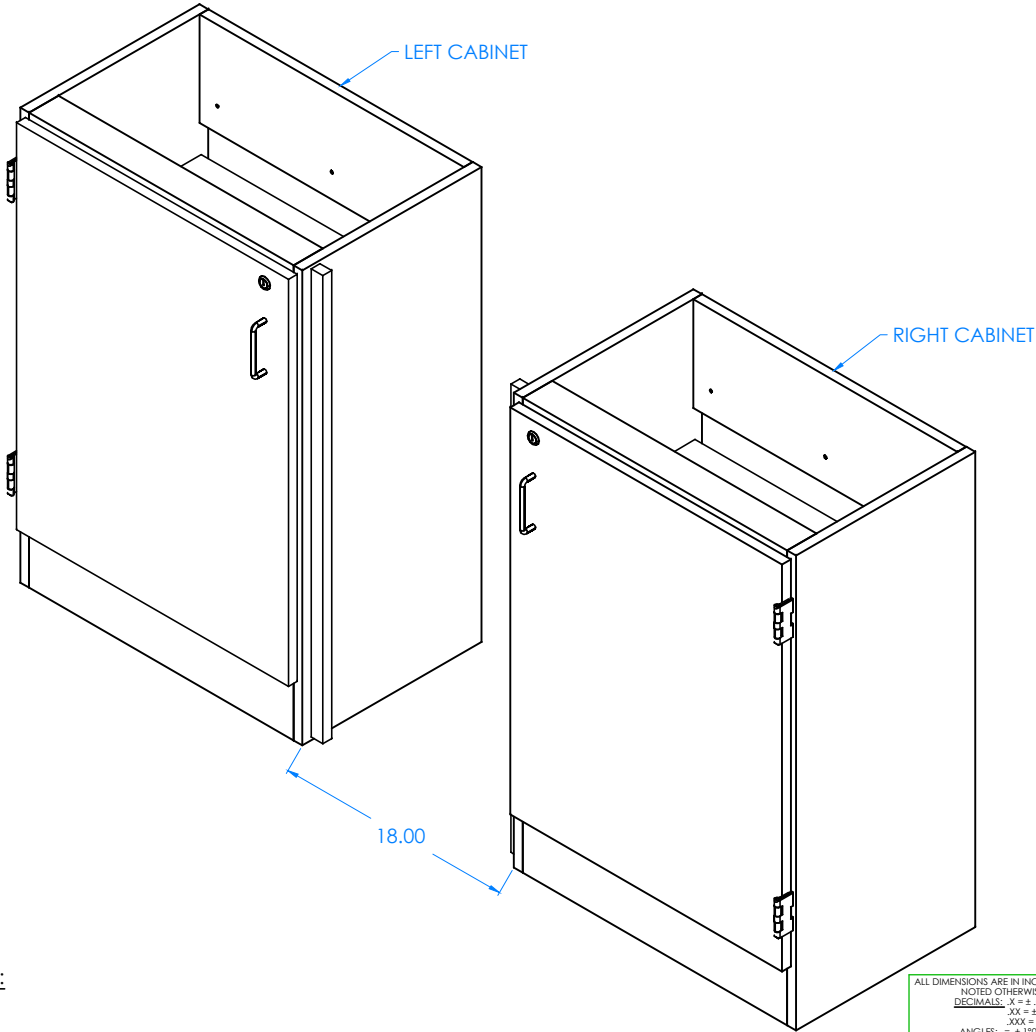
THESE DOCUMENTS ARE SUPPLIED WITH THE UNDERSTANDING THAT THEY WILL NOT BE DISCLOSED TO THIRD PARTIES WITHOUT WRITTEN CONSENT OF DIVERSIFIED WOODCRAFTS, INC. ANY REPRODUCTION IN PART OR WHOLE WITHOUT WRITTEN CONSENT IS SUBJECT TO LEGAL ACTION.



300 South Krueger Street  
Suring, WI 54174  
diversifiedwoodcrafts.com

TITLE:  
FORWARD VISION III  
TOOLS AND ASSEMBLY COMPONENTS

DRAWING NUMBER:	SCALE:	SHEET:	REVISION:
FORWARD VISION III	NTS	3 OF 13	REV A



STEP 1:

- POSITION THE TWO CABINETS IN DESIRED LOCATION.
- MAKE SURE DOOR HINGES ARE ON THE OUTSIDE.
- IF YOU HAVE A "K" SERIES UNIT, PLACE UNIT OVER UTILITY HOOKUPS.
- LEAVE ENOUGH ROOM IN BETWEEN CABINETS FOR REMOVABLE PANEL.
- LEVEL CABINETS.
- ATTACH TO FLOOR.

NOTE:

1.

ALL DIMENSIONS ARE IN INCHES UNLESS NOTED OTHERWISE	DWN BY:	EMR	DATE DWN:	11/8/16
DECIMALS: X = ± .030	APR BY:		DATE APR:	
XX = ± .020	APR BY:		DATE APR:	
XXX = ± .010	APR BY:		DATE APR:	
ANGLES: = ± 1°	APR BY:		DATE APR:	
CABINET SQUARENESS: = ± .0625	APR BY:		DATE APR:	

CONFIDENTIAL:  
ALL DESIGN RIGHTS RESERVED  
THE INFORMATION, DATA, DESIGN, AND DRAWINGS EMBODIED IN THIS DOCUMENT AND ALL REPRODUCTIONS THEREOF ARE THE EXCLUSIVE PROPERTY OF DIVERSIFIED WOODCRAFTS, INC.

THESE DOCUMENTS ARE SUPPLIED WITH THE UNDERSTANDING THAT THEY WILL NOT BE DISCLOSED TO THIRD PARTIES WITHOUT WRITTEN CONSENT OF DIVERSIFIED WOODCRAFTS, INC. ANY REPRODUCTION IN PART OR WHOLE WITHOUT WRITTEN CONSENT IS SUBJECT TO LEGAL ACTION.



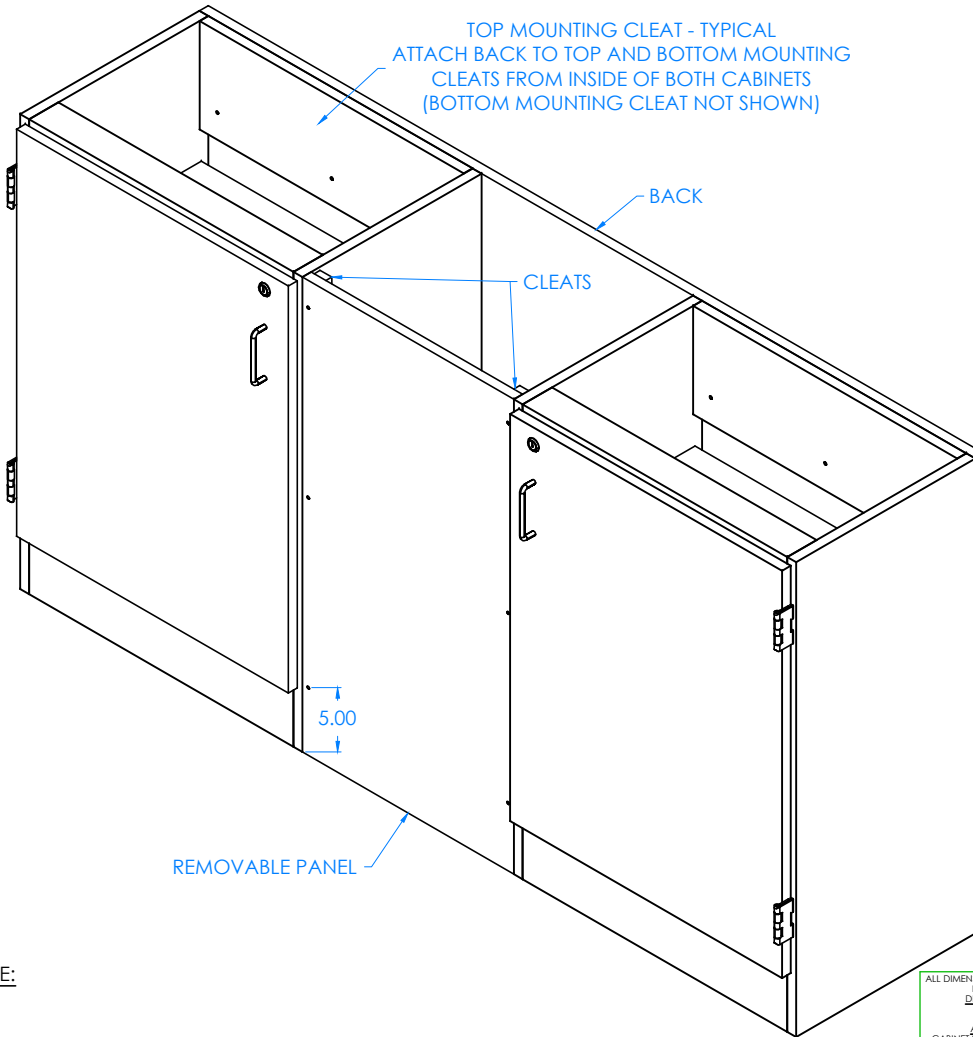
300 South Krueger Street  
Suring, WI 54174  
diversifiedwoodcrafts.com

TITLE:  
FORWARD VISION III  
ASSEMBLY INSTRUCTIONS

A	CREATED DRAWING	11/8/16	EMR	-
REV.	DESCRIPTION	DATE	NAME	ECN NO.

REVISION LEVEL

DRAWING NUMBER:	SCALE:	SHEET:	REVISION:
FORWARD VISION III	NTS	4 OF 13	REV A



**NOTE:**

1.

**STEP 2:**

- ATTACH REMOVABLE PANEL WITH HARDWARE PROVIDED TO THE CLEATS ON SIDES OF LEFT AND RIGHT CABINETS BY DRILLING PILOT HOLES THROUGH CLEATS.
- POSITION REMOVABLE PANEL SO THAT BOTTOM HOLES ARE MORE THAN 4" ABOVE FLOOR.
- ATTACH BACK PANEL TO BACK OF CABINETS WITH THE SCREWS PROVIDED INTO MOUNTING CLEATS LOCATED INSIDE ON TOP AND BOTTOM OF BOTH CABINETS.

ALL DIMENSIONS ARE IN INCHES UNLESS NOTED OTHERWISE  
 DECIMALS: .X = ± .030  
 .XX = ± .020  
 .XXX = ± .010  
 ANGLES: = ± 1°  
 CABINET SQUARENESS: = ± .0625

DWN BY:	EMR	DATE DWN:	11/8/16
APR BY:		DATE APR:	
APR BY:		DATE APR:	

CONFIDENTIAL:  
 ALL DESIGN RIGHTS RESERVED  
 THE INFORMATION, DATA, DESIGN, AND DRAWINGS EMBODIED IN THIS DOCUMENT AND ALL REPRODUCTIONS THEREOF ARE THE EXCLUSIVE PROPERTY OF DIVERSIFIED WOODCRAFTS, INC.

THESE DOCUMENTS ARE SUPPLIED WITH THE UNDERSTANDING THAT THEY WILL NOT BE DISCLOSED TO THIRD PARTIES WITHOUT WRITTEN CONSENT OF DIVERSIFIED WOODCRAFTS, INC. ANY REPRODUCTION IN PART OR WHOLE WITHOUT WRITTEN CONSENT IS SUBJECT TO LEGAL ACTION.

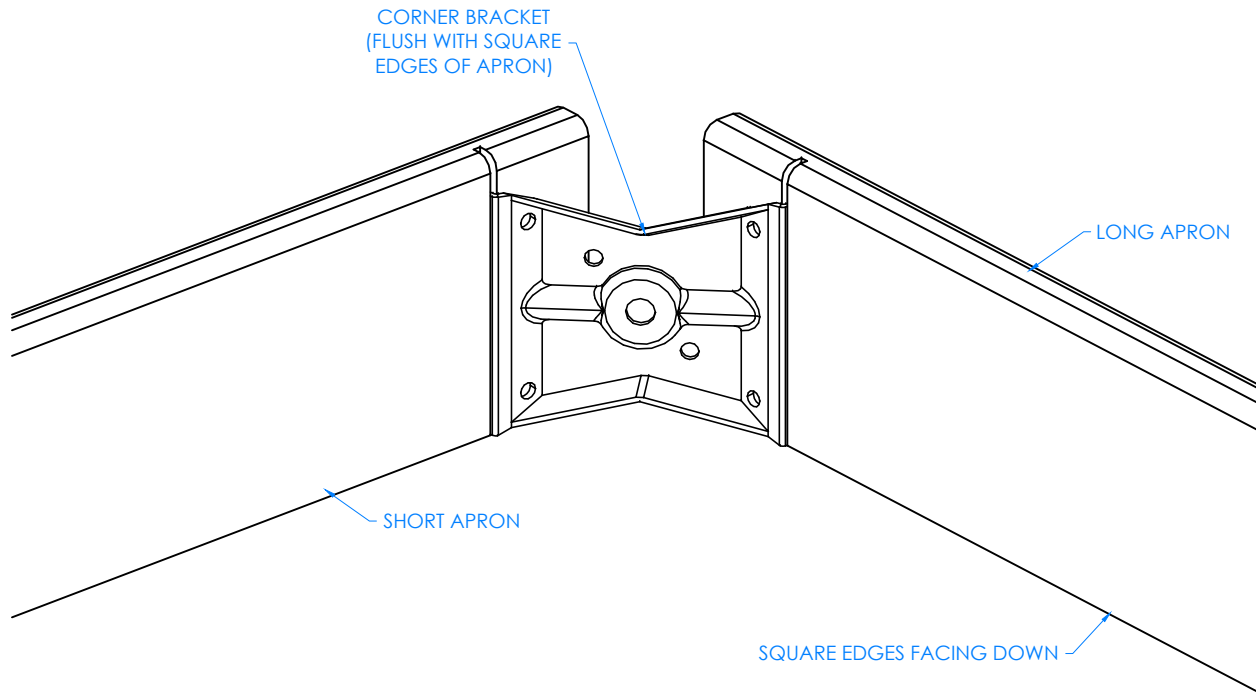


300 South Krueger Street  
 Suring, WI 54174  
 diversifiedwoodcrafts.com

TITLE:  
 FORWARD VISION III  
 ASSEMBLY INSTRUCTIONS

A	CREATED DRAWING	11/8/16	EMR	-
REV.	DESCRIPTION	DATE	NAME	ECN NO.
REVISION LEVEL				

DRAWING NUMBER:	SCALE:	SHEET:	REVISION:
FORWARD VISION III	NTS	5 OF 13	REV A



## STEP 3:

- LAYOUT WORKSTATION FRAME WITH SQUARE EDGES OF APRONS ON FLOOR, ROUNDED EDGES FACING UP.
- CONNECT LONG APRON AND SHORT APRON TOGETHER BY USING THE CORNER LEG BRACKET.
- MAKE SURE BRACKET IS FLUSH WITH SQUARE EDGES OF APRONS.
- REPEAT ON OTHER BRACKET.

## NOTE:

1.

## CLOSE UP OF CORNER BRACKET ASSEMBLY

ALL DIMENSIONS ARE IN INCHES UNLESS NOTED OTHERWISE	DWN BY:	EMR	DATE DWN:	11/8/16
DECIMALS: X = ± .030	APR BY:		DATE APR:	
XX = ± .020	APR BY:		DATE APR:	
XXX = ± .010	APR BY:		DATE APR:	
ANGLES: = ± 1°	APR BY:		DATE APR:	
CABINET SQUARENESS: = ± .0625	APR BY:		DATE APR:	

CONFIDENTIAL:  
ALL DESIGN RIGHTS RESERVED  
THE INFORMATION, DATA, DESIGN, AND DRAWINGS EMBODIED IN THIS DOCUMENT AND ALL REPRODUCTIONS THEREOF ARE THE EXCLUSIVE PROPERTY OF DIVERSIFIED WOODCRAFTS, INC.

THESE DOCUMENTS ARE SUPPLIED WITH THE UNDERSTANDING THAT THEY WILL NOT BE DISCLOSED TO THIRD PARTIES WITHOUT WRITTEN CONSENT OF DIVERSIFIED WOODCRAFTS, INC. ANY REPRODUCTION IN PART OR WHOLE WITHOUT WRITTEN CONSENT IS SUBJECT TO LEGAL ACTION.

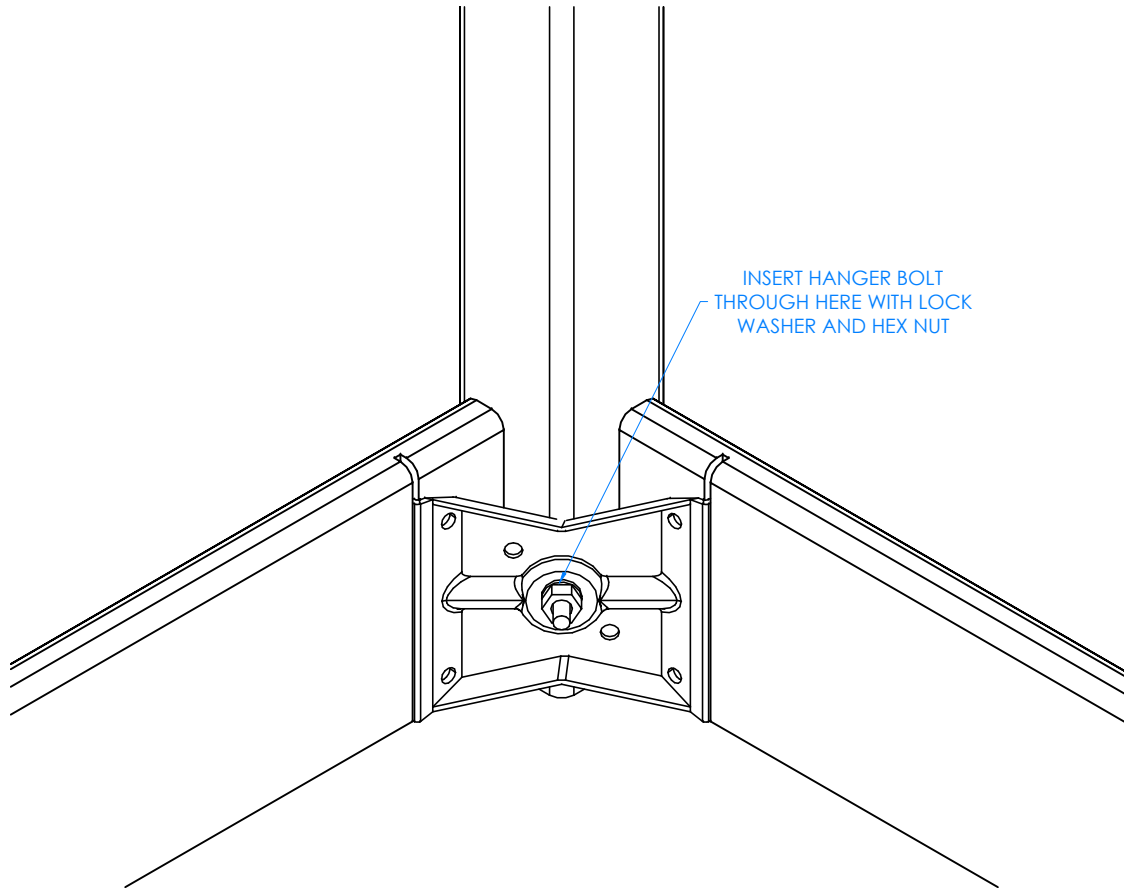


300 South Krueger Street  
Suring, WI 54174  
diversifiedwoodcrafts.com

TITLE:  
FORWARD VISION III  
ASSEMBLY INSTRUCTIONS

A	CREATED DRAWING	11/8/16	EMR	-
REV.	DESCRIPTION	DATE	NAME	ECN NO.
REVISION LEVEL				

DRAWING NUMBER:	SCALE:	SHEET:	REVISION:
FORWARD VISION III	NTS	6 OF 13	REV A



INSERT HANGER BOLT  
THROUGH HERE WITH LOCK  
WASHER AND HEX NUT

## STEP 4:

- INSERT HANGER BOLT ON ONE LEG THROUGH CORNER BRACKET AND INSERT LOCK WASHER AND HEX NUT.
- TIGHTEN NUT USING  $\frac{1}{2}$ " WRENCH OR  $\frac{1}{2}$ " SOCKET AND TORQUE WRENCH, TO A MINIMUM OF 12FT LBS BUT NOT TO EXCEED 17FT LBS.
- REPEAT FOR OTHER CORNER LEG.

CLOSE UP OF CORNER BRACKET ASSEMBLY

## NOTE:

1.

ALL DIMENSIONS ARE IN INCHES UNLESS NOTED OTHERWISE	DWN BY:	EMR	DATE DWN:	11/8/16
DECIMALS: X = ± .030	APR BY:		DATE APR:	
XX = ± .020	APR BY:		DATE APR:	
XXX = ± .010	APR BY:		DATE APR:	
ANGLES: = ± 1°	APR BY:		DATE APR:	
CABINET SQUARENESS: = ± .0625	APR BY:		DATE APR:	

CONFIDENTIAL:  
ALL DESIGN RIGHTS RESERVED  
THE INFORMATION, DATA, DESIGN, AND DRAWINGS EMBODIED IN THIS DOCUMENT AND ALL REPRODUCTIONS THEREOF ARE THE EXCLUSIVE PROPERTY OF DIVERSIFIED WOODCRAFTS, INC.

THESE DOCUMENTS ARE SUPPLIED WITH THE UNDERSTANDING THAT THEY WILL NOT BE DISCLOSED TO THIRD PARTIES WITHOUT WRITTEN CONSENT OF DIVERSIFIED WOODCRAFTS, INC. ANY REPRODUCTION IN PART OR WHOLE WITHOUT WRITTEN CONSENT IS SUBJECT TO LEGAL ACTION.

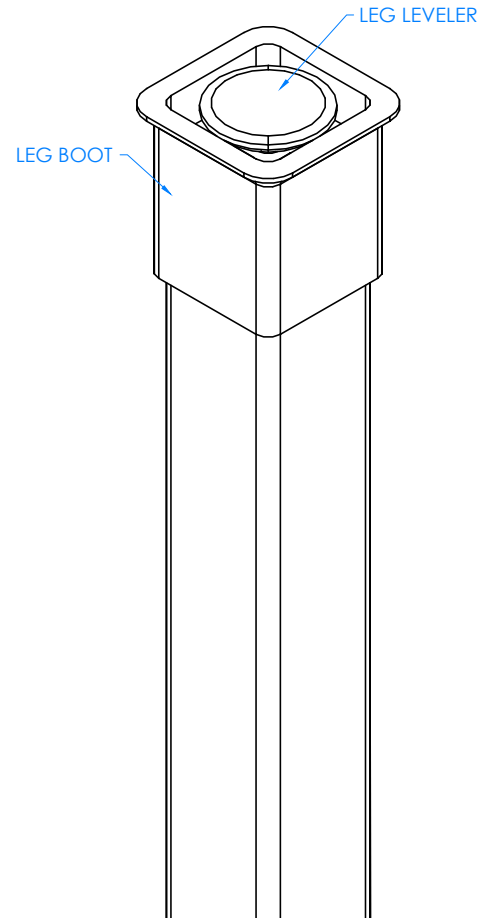


300 South Krueger Street  
Suring, WI 54174  
diversifiedwoodcrafts.com

TITLE:  
FORWARD VISION III  
ASSEMBLY INSTRUCTIONS

A	CREATED DRAWING	11/8/16	EMR	-
REV.	DESCRIPTION	DATE	NAME	ECN NO.
REVISION LEVEL				

DRAWING NUMBER:	SCALE:	SHEET:	REVISION:
FORWARD VISION III	NTS	7 OF 13	REV A



CLOSE UP OF LEG LEVELER AND LEG BOOT ASSEMBLY

## STEP 5:

- SLIDE LEG BOOT ONTO LEG WITH FLARED END TOWARDS BOTTOM OF LEG.
- SCREW LEG LEVELER INTO T-NUT ON BOTTOM OF THE LEG.
- REPEAT FOR ALL LEGS.

## NOTE:

1.

ALL DIMENSIONS ARE IN INCHES UNLESS NOTED OTHERWISE	DWN BY:	EMR	DATE DWN:	11/8/16
DECIMALS: X = ± .030	APR BY:		DATE APR:	
XX = ± .020	APR BY:		DATE APR:	
XXX = ± .010	APR BY:		DATE APR:	
ANGLES: = ± 1°	APR BY:		DATE APR:	
CABINET SQUARENESS: = ± .0625	APR BY:		DATE APR:	

CONFIDENTIAL:  
ALL DESIGN RIGHTS RESERVED  
THE INFORMATION, DATA, DESIGN, AND DRAWINGS EMBODIED IN THIS DOCUMENT AND ALL REPRODUCTIONS THEREOF ARE THE EXCLUSIVE PROPERTY OF DIVERSIFIED WOODCRAFTS, INC.

THESE DOCUMENTS ARE SUPPLIED WITH THE UNDERSTANDING THAT THEY WILL NOT BE DISCLOSED TO THIRD PARTIES WITHOUT WRITTEN CONSENT OF DIVERSIFIED WOODCRAFTS, INC. ANY REPRODUCTION IN PART OR WHOLE WITHOUT WRITTEN CONSENT IS SUBJECT TO LEGAL ACTION.



300 South Krueger Street  
Suring, WI 54174  
diversifiedwoodcrafts.com

TITLE:  
FORWARD VISION III  
ASSEMBLY INSTRUCTIONS

A	CREATED DRAWING	11/8/16	EMR	-
REV.	DESCRIPTION	DATE	NAME	ECN NO.
REVISION LEVEL				

DRAWING NUMBER:	SCALE:	SHEET:	REVISION:
FORWARD VISION III	NTS	8 OF 13	REV A



L BRACKET - TYPICAL

WORKSTATION  
FRAME

ATTACH WORKSTATION  
FRAME TO CABINET HERE  
(BOTH SIDES)

STEP 6:

- WITH HELP FROM ANOTHER PERSON, STAND WORKSTATION FRAME UP.
- POSITION FRAME UP TO CABINET.
- ATTACH L BRACKET ONTO APRON WITH HARDWARE PROVIDED.
- ATTACH BRACKET ONTO BACK OF WORKSTATION WITH THE REMAINING SCREWS.

NOTE:

1.

BACKSIDE OF WORKSTATION

ALL DIMENSIONS ARE IN INCHES UNLESS  
NOTED OTHERWISE  
DECIMALS: X = ± .030  
XX = ± .020  
XXX = ± .010  
ANGLES: = ± 1°  
CABINET SQUARENESS: = ± .0625

DWN BY:	EMR	DATE DWN:	11/8/16
APR BY:		DATE APR:	
APR BY:		DATE APR:	

CONFIDENTIAL:  
ALL DESIGN RIGHTS RESERVED  
THE INFORMATION, DATA, DESIGN, AND DRAWINGS EMBODIED  
IN THIS DOCUMENT AND ALL REPRODUCTIONS THEREOF ARE  
THE EXCLUSIVE PROPERTY OF DIVERSIFIED WOODCRAFTS, INC.

THESE DOCUMENTS ARE SUPPLIED WITH THE UNDERSTANDING  
THAT THEY WILL NOT BE DISCLOSED TO THIRD PARTIES WITHOUT  
WRITTEN CONSENT OF DIVERSIFIED WOODCRAFTS, INC. ANY  
REPRODUCTION IN PART OR WHOLE WITHOUT WRITTEN  
CONSENT IS SUBJECT TO LEGAL ACTION.



300 South Krueger Street  
Suring, WI 54174  
diversifiedwoodcrafts.com

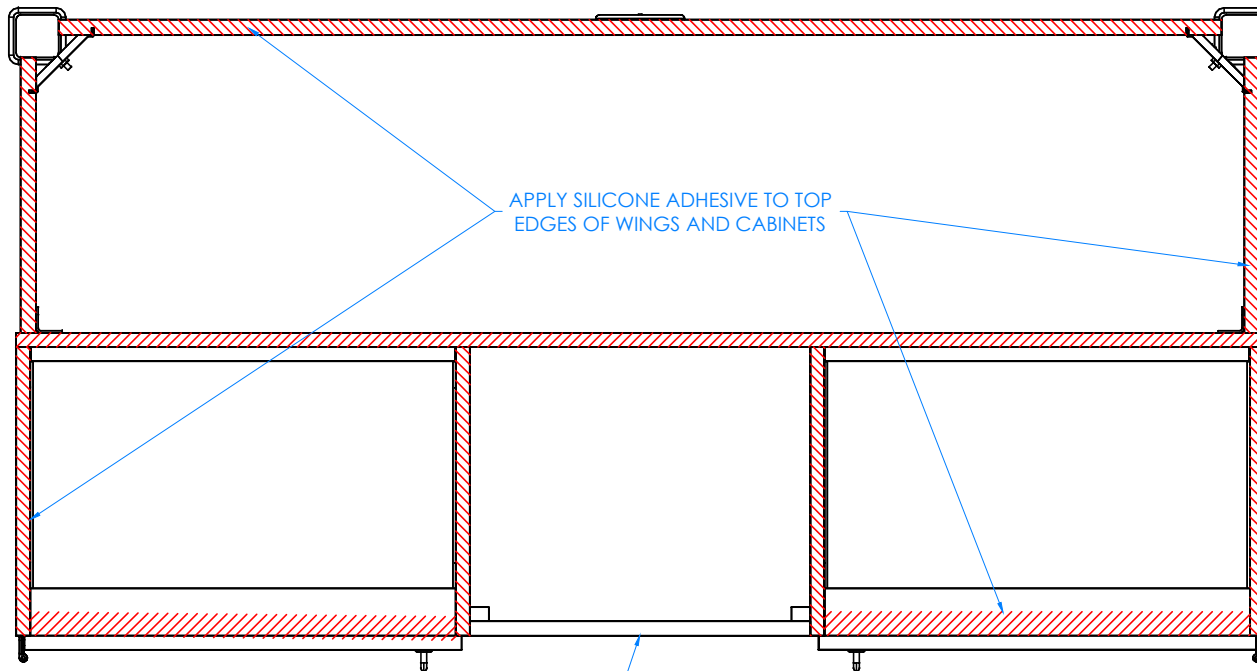
TITLE:  
**FORWARD VISION III  
ASSEMBLY INSTRUCTIONS**

DRAWING NUMBER:	SCALE:	SHEET:	REVISION:
<b>FORWARD VISION III</b>	NTS	9 OF 13	REV A

A	CREATED DRAWING	11/8/16	EMR	-
REV.	DESCRIPTION	DATE	NAME	ECN NO.
REVISION LEVEL				

## STEP 7:

- ADJUST LEG LEVELERS TO LEVEL WORKSTATION FRAME WITH CABINETS.
- APPLY SILICONE ADHESIVE TO TOP EDGES OF CABINET AND WINGS.
- PLACE TOP ON UNIT WITH PROPER OVERHANG (CENTERED ON WORKSTATION).
- CLAMP ON TOP TO WINGS TO REMOVE ANY WARP USING SHIMS AND C-CLAMPS, IF NEEDED, WHEN ALIGNING THE TOP (DO THIS BEFORE ADHESIVE ON EDGES SETS UP).
- LET CURE FOR 6-12 HOURS.
- DO NOT APPLY SILICONE ADHESIVE TO REMOVABLE PANEL.



## NOTE:

1.

DO NOT APPLY SILICONE  
ADHESIVE ON REMOVABLE  
PANEL

TOP VIEW OF WORKSTATION SHOWN

A	CREATED DRAWING	11/8/16	EMR	-
REV.	DESCRIPTION	DATE	NAME	ECN NO.
REVISION LEVEL				

ALL DIMENSIONS ARE IN INCHES UNLESS NOTED OTHERWISE  
 DECIMALS: X = ± .030  
 XX = ± .020  
 XXX = ± .010  
 ANGLES: = ± 1°  
 CABINET SQUARENESS: = ± .0625

CONFIDENTIAL:  
 ALL DESIGN RIGHTS RESERVED  
 THE INFORMATION, DATA, DESIGN, AND DRAWINGS EMBODIED  
 IN THIS DOCUMENT AND ALL REPRODUCTIONS THEREOF ARE  
 THE EXCLUSIVE PROPERTY OF DIVERSIFIED WOODCRAFTS, INC.

THESE DOCUMENTS ARE SUPPLIED WITH THE UNDERSTANDING  
 THAT THEY WILL NOT BE DISCLOSED TO THIRD PARTIES WITHOUT  
 WRITTEN CONSENT OF DIVERSIFIED WOODCRAFTS, INC. ANY  
 REPRODUCTION IN PART OR WHOLE WITHOUT WRITTEN  
 CONSENT IS SUBJECT TO LEGAL ACTION.

DWN BY:	EMR	DATE DWN:	11/8/16
APR BY:		DATE APR:	
APR BY:		DATE APR:	



300 South Krueger Street  
 Suring, WI 54174  
[diversifiedwoodcrafts.com](http://diversifiedwoodcrafts.com)

TITLE:  
 FORWARD VISION III  
 ASSEMBLY INSTRUCTIONS

DRAWING NUMBER:	SCALE:	SHEET:	REVISION:
FORWARD VISION III	NTS	10 OF 13	REV A

## STEP 8:

- IF YOU DO NOT HAVE A "K" SERIES UNIT, SKIP TO STEP 9.
- APPLY SILICONE ADHESIVE TO THE SINK OPENING ON TOP.
- LOWER SINK INTO OPENING.
- WIPE OFF ANY EXCESS CAULK AND ALLOW TO SET.
- LET CURE FOR 6-12 HOURS.

TOP

APPLY SILICONE ADHESIVE  
AROUND OPENING FOR SINK

## NOTE:

1.

TOP VIEW OF WORKSTATION SHOWN

A	CREATED DRAWING	11/8/16	EMR	-
REV.	DESCRIPTION	DATE	NAME	ECN NO.
REVISION LEVEL				

ALL DIMENSIONS ARE IN INCHES UNLESS NOTED OTHERWISE	DWN BY:	EMR	DATE DWN:	11/8/16
DECIMALS: X = ± .030	APR BY:		DATE APR:	
XX = ± .020	APR BY:		DATE APR:	
XXX = ± .010	APR BY:		DATE APR:	
ANGLES: = ± 1°	APR BY:		DATE APR:	
CABINET SQUARENESS: = ± .0625	APR BY:		DATE APR:	

CONFIDENTIAL:  
ALL DESIGN RIGHTS RESERVED  
THE INFORMATION, DATA, DESIGN, AND DRAWINGS EMBODIED  
IN THIS DOCUMENT AND ALL REPRODUCTIONS THEREOF ARE  
THE EXCLUSIVE PROPERTY OF DIVERSIFIED WOODCRAFTS, INC.

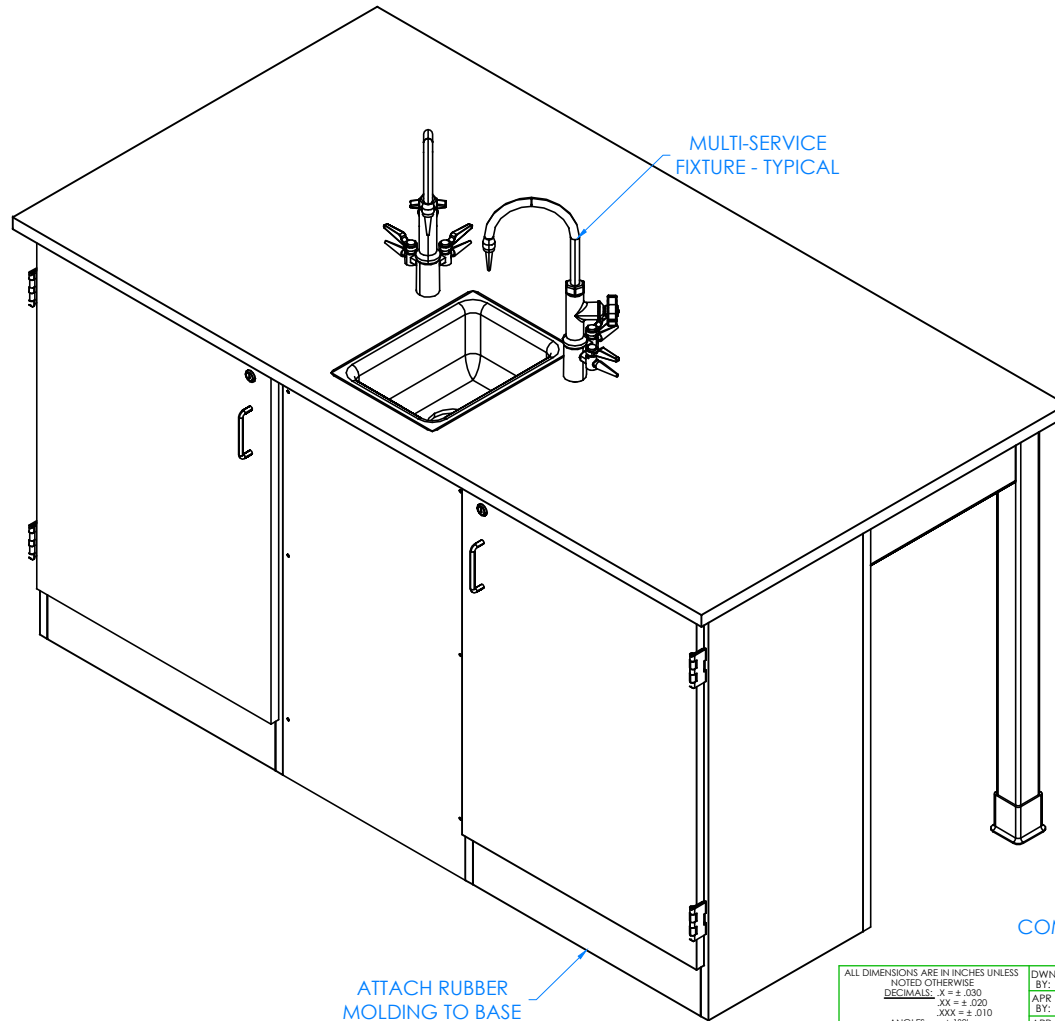
THESE DOCUMENTS ARE SUPPLIED WITH THE UNDERSTANDING  
THAT THEY WILL NOT BE DISCLOSED TO THIRD PARTIES WITHOUT  
WRITTEN CONSENT OF DIVERSIFIED WOODCRAFTS, INC. ANY  
REPRODUCTION IN PART OR WHOLE WITHOUT WRITTEN  
CONSENT IS SUBJECT TO LEGAL ACTION.



300 South Krueger Street  
Suring, WI 54174  
diversifiedwoodcrafts.com

TITLE:  
FORWARD VISION III  
ASSEMBLY INSTRUCTIONS

DRAWING NUMBER:	SCALE:	SHEET:	REVISION:
FORWARD VISION III	NTS	11 OF 13	REV A



STEP 9:

- ATTACH RUBBER MOLDING TO BASE OF WORKSTATION USING CONTACT CEMENT.
- SCREW STAINLESS STEEL CORNER BRACKETS ON EACH CORNER OVER BASE MOLDING WITH HARDWARE PROVIDED.
- IF YOU HAVE A "K" SERIES UNIT, INSTALL MULTI-SERVICE FIXTURES IN THE HOLES PROVIDED ON TOP.

COMPLETE UNIT SHOWN

NOTE:

1. ALL WATER, ELECTRICAL, AND GAS CONNECTIONS SHOULD BE PERFORMED BY A TRAINED PROFESSIONAL PER LOCAL CODE.

A	CREATED DRAWING	11/8/16	EMR	-
REV.	DESCRIPTION	DATE	NAME	ECN NO.
REVISION LEVEL				

ALL DIMENSIONS ARE IN INCHES UNLESS NOTED OTHERWISE	DWN BY:	EMR	DATE DWN:	11/8/16
DECIMALS: X = ± .030	APR BY:		DATE APR:	
XX = ± .020	APR BY:		DATE APR:	
XXX = ± .010	APR BY:		DATE APR:	
ANGLES: = ± 1°	APR BY:		DATE APR:	
CABINET SQUARENESS: = ± .0625	APR BY:		DATE APR:	

CONFIDENTIAL:  
ALL DESIGN RIGHTS RESERVED  
THE INFORMATION, DATA, DESIGN, AND DRAWINGS EMBODIED IN THIS DOCUMENT AND ALL REPRODUCTIONS THEREOF ARE THE EXCLUSIVE PROPERTY OF DIVERSIFIED WOODCRAFTS, INC.

THESE DOCUMENTS ARE SUPPLIED WITH THE UNDERSTANDING THAT THEY WILL NOT BE DISCLOSED TO THIRD PARTIES WITHOUT WRITTEN CONSENT OF DIVERSIFIED WOODCRAFTS, INC. ANY REPRODUCTION IN PART OR WHOLE WITHOUT WRITTEN CONSENT IS SUBJECT TO LEGAL ACTION.



300 South Krueger Street  
Suring, WI 54174  
diversifiedwoodcrafts.com

TITLE:  
FORWARD VISION III  
ASSEMBLY INSTRUCTIONS

DRAWING NUMBER:	SCALE:	SHEET:	REVISION:
FORWARD VISION III	NTS	12 OF 13	REV A

## **TROUBLESHOOTING YOUR GFCI ELECTRICAL RECEPTACLE:**

**PLEASE NOTE: THROUGHOUT ANY OF THE FOLLOWING STEPS (PROCEDURES); IF YOU ARE NOT SURE YOU CAN DO THIS JOB SAFELY, AND COMPETENTLY, REFER THIS WORK TO QUALIFIED PROFESSIONAL!**

**If your unit comes equipped with a GFCI (Ground Fault Circuit Interrupter) electrical receptacle, and there is no power in the receptacle please consider/check the following:**

- The extension cord (if being used) is working properly.
- The breaker hasn't been tripped, or turned off.

This type of GFCI has two testing-related buttons on it. One button is appropriately labeled "TEST", and the other button is labeled "RESET". To test the GFCI receptacle follow these steps:

- Plug in an appliance (lamp or night light) into the outlet. The light should now be on. Then press the "TEST" button on the GFCI. The GFCI "RESET" button should pop out, and the light should go out.
- If the "RESET" button pops out, but the light doesn't go out, the GFCI has been improperly wired. In this case please contact a certified professional. There may also be a problem with other wiring in the same circuit.
- If the "RESET" button doesn't pop out, the GFCI is defective, or malfunctioned, and should be replaced.
- If the GFCI is functioning properly, and the lamp goes out, press the "RESET" button to restore power to the outlet.

Conversely, if you have a GFI that has tripped (which is common) and it will not reset, you may have a wiring short in the circuit, a defective appliance on the circuit, or the GFI itself has become defective. To test a tripping GFCI follow these steps:

- Remove every appliance connected to the GFCI's circuit and reset it. If it doesn't reset there may either be a wiring fault behind a socket outlet, or your GFCI itself has become faulty.
- Make sure whatever you are plugging into the GFCI is dry and not damaged.
- Only plug in one item at a time. If you are plugging in a defective item it will cause the GFCI to trip, and that item therefore should be replaced.

If you are still having difficulty the easiest way to troubleshoot a GFI is to obtain a GFI tester, which is available at most hardware stores. It plugs into the GFI outlet, and will supply you with a "snapshot" of your connections, indicating wiring problems and/or the condition of the GFI. Another way to troubleshoot is to simply purchase a new GFI and install it.