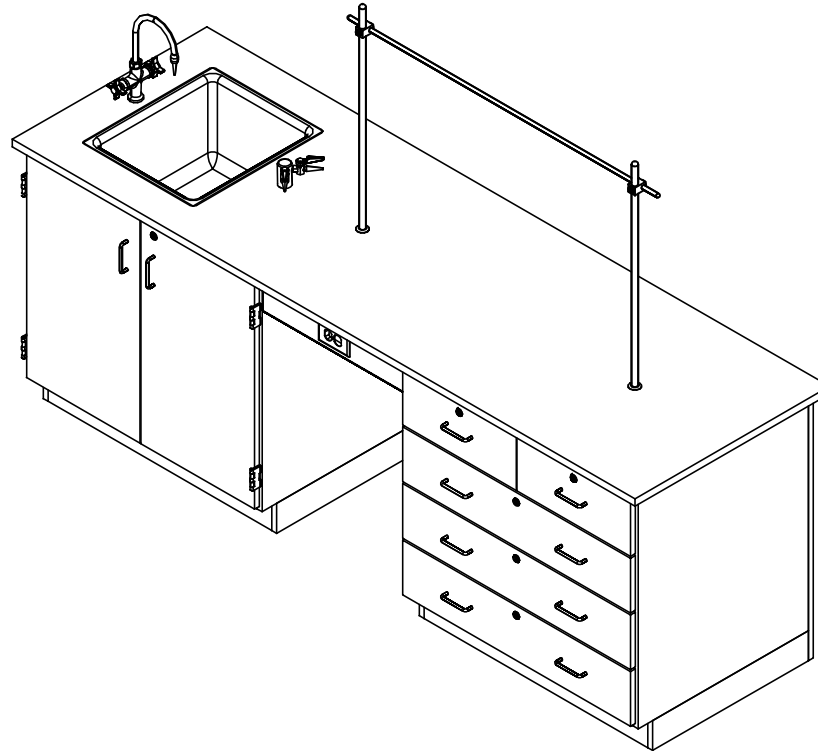


8' INSTRUCTOR DESK

1114K, 1114KF, 1116K, & 1116KF SERIES
ASSEMBLY INSTRUCTIONS



NOTE:

1. MODEL VIEWS MAY NOT REPRESENT EXACT MODEL PURCHASED

| | | | | |
|---|---------|-----|-----------|---------|
| ALL DIMENSIONS ARE IN INCHES UNLESS NOTED OTHERWISE | DWN BY: | EMR | DATE DWN: | 11/8/16 |
| DECIMALS: X = ± .030 XX = ± .020 XXX = ± .010 | APR BY: | | DATE APR: | |
| ANGLES: = ± 1° | APR BY: | | DATE APR: | |
| CABINET SQUARENESS: = ± .0625 | APR BY: | | DATE APR: | |

CONFIDENTIAL:
ALL DESIGN RIGHTS RESERVED
THE INFORMATION, DATA, DESIGN, AND DRAWINGS EMBODIED IN THIS DOCUMENT AND ALL REPRODUCTIONS THEREOF ARE THE EXCLUSIVE PROPERTY OF DIVERSIFIED WOODCRAFTS, INC.

THESE DOCUMENTS ARE SUPPLIED WITH THE UNDERSTANDING THAT THEY WILL NOT BE DISCLOSED TO THIRD PARTIES WITHOUT WRITTEN CONSENT OF DIVERSIFIED WOODCRAFTS, INC. ANY REPRODUCTION IN PART OR WHOLE WITHOUT WRITTEN CONSENT IS SUBJECT TO LEGAL ACTION.



300 South Krueger Street
Suring, WI 54174
diversifiedwoodcrafts.com

TITLE:
**8' INSTRUCTOR DESK
ASSEMBLY INSTRUCTIONS**

| REV. | DESCRIPTION | DATE | NAME | ECN NO. |
|----------------|-----------------|---------|------|---------|
| A | CREATED DRAWING | 11/8/16 | EMR | - |
| REVISION LEVEL | | | | |

| | | | |
|------------------------|--------|---------|-----------|
| DRAWING NUMBER: | SCALE: | SHEET: | REVISION: |
| 1114K & KF, 1116K & KF | NTS | 1 OF 14 | REV A |

TOOLS REQUIRED

| |
|------------------------|
| CONTACT CEMENT |
| SCREW DRIVER |
| C-CLAMPS |
| SHIM STOCK (IF NEEDED) |

ASSEMBLY COMPONENTS

| ITEMS INCLUDED | PART # | PART DESCRIPTION | QTY |
|----------------------------|--------|--|-----|
| TOP | VARIES | TOP, (STYLE VARIES), 1.00X30X96,BLK, (EITHER FIXTURE OR FLAT) | 1 |
| CABINET | N/A | B86 - 36"W X 35"H X 26.25"D | 1 |
| CABINET | N/A | B23 - 36"W X 35"H X 26.25"D | 1 |
| BACK PANEL | N/A | 94"W X 35"H X 0.75"D | 1 |
| APRON | N/A | 0.81"THK X 4.50"W X 22"L | 1 |
| SCREWS - BACK PANEL | 100478 | SCREW,#8X1 ¼ SQ. WASHER FLAT HEAD | 12 |
| L BRACKET | 100355 | BRACKET, RAIL 1.25X1.25X4.25 | 2 |
| SCREWS - L BRACKET | 100649 | SCREW,#8X¾ PHIL TRUSS HEAD SMS | 8 |
| SILICONE | 100711 | SILICONE,SEALANT,CLEAR | 1 |
| RUBBER BASE MOLDING | 100283 | RUBBER BASE MOLDING (SOLD BY FOOT) | 25 |
| STAINLESS STEEL CORNERS | 100057 | CORNER-STAINLESS STEEL, BASE | 8 |
| SCREWS - BASE | 100064 | SCREW,#6X½ PTH SMS SS SCREW | 32 |
| ELECTRICAL BOX | 100033 | ELECTRICAL BOX 3.00X2X2.5 DEEP | 1 |
| ELECTRICAL OUTLET | 100034 | ELEC,OUTLET,GFI,20A 125V, BLK | 1 |
| **FIXTURE - FAUCET** | 100048 | FIXTURE,L4100FH-132AWSA 90 DEGREE-G | 1 |
| **FIXTURE - FAUCET** | 100467 | FIXTURE,L414 HOT & COLD MIXING | 1 |
| **FIXTURE - SINK** | 100699 | SINK,EPOXY L30,BLK | 1 |
| **FIXTURE - SINK TRAP** | 100056 | SINK TRAP,PLASTIC ADJUSTABLE | 1 |
| **FIXTURE - SINK STOPPER** | 100112 | SINK STOPPER 1 ½,BLK | 1 |
| **FIXTURE - STRAINER** | 100055 | SINK,OUTLET/STRAINER EPOXY,BLK | 1 |

NOTE:

1. TOPS ARE EITHER PHENOLIC OR EPOXY.
2. **XX** INDICATES ITEMS USED ONLY FOR THE "K" SERIES.

ALL DIMENSIONS ARE IN INCHES UNLESS NOTED OTHERWISE
 DECIMALS: X = ± .030
 XX = ± .020
 XXX = ± .010
 ANGLES: = ± 1°
 CABINET SQUARENESS: = ± .0625

DWN BY: EMR DATE DWN: 11/8/16
 APR BY: DATE APR:
 APR BY: DATE APR:

CONFIDENTIAL:
 ALL DESIGN RIGHTS RESERVED
 THE INFORMATION, DATA, DESIGN, AND DRAWINGS EMBODIED IN THIS DOCUMENT AND ALL REPRODUCTIONS THEREOF ARE THE EXCLUSIVE PROPERTY OF DIVERSIFIED WOODCRAFTS, INC.

THESE DOCUMENTS ARE SUPPLIED WITH THE UNDERSTANDING THAT THEY WILL NOT BE DISCLOSED TO THIRD PARTIES WITHOUT WRITTEN CONSENT OF DIVERSIFIED WOODCRAFTS, INC. ANY REPRODUCTION IN PART OR WHOLE WITHOUT WRITTEN CONSENT IS SUBJECT TO LEGAL ACTION.



300 South Krueger Street
 Suring, WI 54174
 diversifiedwoodcrafts.com

TITLE:
 8' INSTRUCTOR DESK
 TOOLS AND ASSEMBLY COMPONENTS

DRAWING NUMBER: 1114K & KF, 1116K & KF SCALE: NTS SHEET: 2 OF 14 REVISION: REV A

| A | CREATED DRAWING | 11/8/16 | EMR | - |
|----------------|-----------------|---------|------|---------|
| REV. | DESCRIPTION | DATE | NAME | ECN NO. |
| REVISION LEVEL | | | | |

| ASSEMBLY COMPONENTS | | | |
|---------------------|--------|--------------------------------------|-----|
| ITEMS INCLUDED | PART # | PART DESCRIPTION | QTY |
| **ROD SOCKET** | 206505 | ROD SOCKET ASSY, SOCKET, WASHER, NUT | 2 |
| **CROSSBAR** | 100006 | ROD, CROSSBAR 3/4 DIA. X48 L | 1 |
| **UPRIGHT** | 100004 | ROD, UPRIGHT 3/4 DIA. X36 L | 2 |
| **CLAMP** | 100002 | ROD CLAMP 3/4 X 3/4 ASSY | 2 |

NOTE:

1. TOPS ARE EITHER PHENOLIC OR EPOXY.
2. **XX** INDICATES ITEMS USED ONLY FOR THE "K" SERIES.

| REV. | DESCRIPTION | DATE | NAME | ECN NO. |
|----------------|-----------------|---------|------|---------|
| A | CREATED DRAWING | 11/8/16 | EMR | - |
| REVISION LEVEL | | | | |

| | | |
|---|-------------|-------------------|
| ALL DIMENSIONS ARE IN INCHES UNLESS NOTED OTHERWISE DECIMALS: X = ± .000 XX = ± .020 XXX = ± .010 ANGLES: = ± 1° CABINET SQUARENESS: = ± .0625 | DWN BY: EMR | DATE DWN: 11/8/16 |
| | APR BY: | DATE APR: |
| | APR BY: | DATE APR: |

CONFIDENTIAL:
ALL DESIGN RIGHTS RESERVED
THE INFORMATION, DATA, DESIGN, AND DRAWINGS EMBODIED IN THIS DOCUMENT AND ALL REPRODUCTIONS THEREOF ARE THE EXCLUSIVE PROPERTY OF DIVERSIFIED WOODCRAFTS, INC.

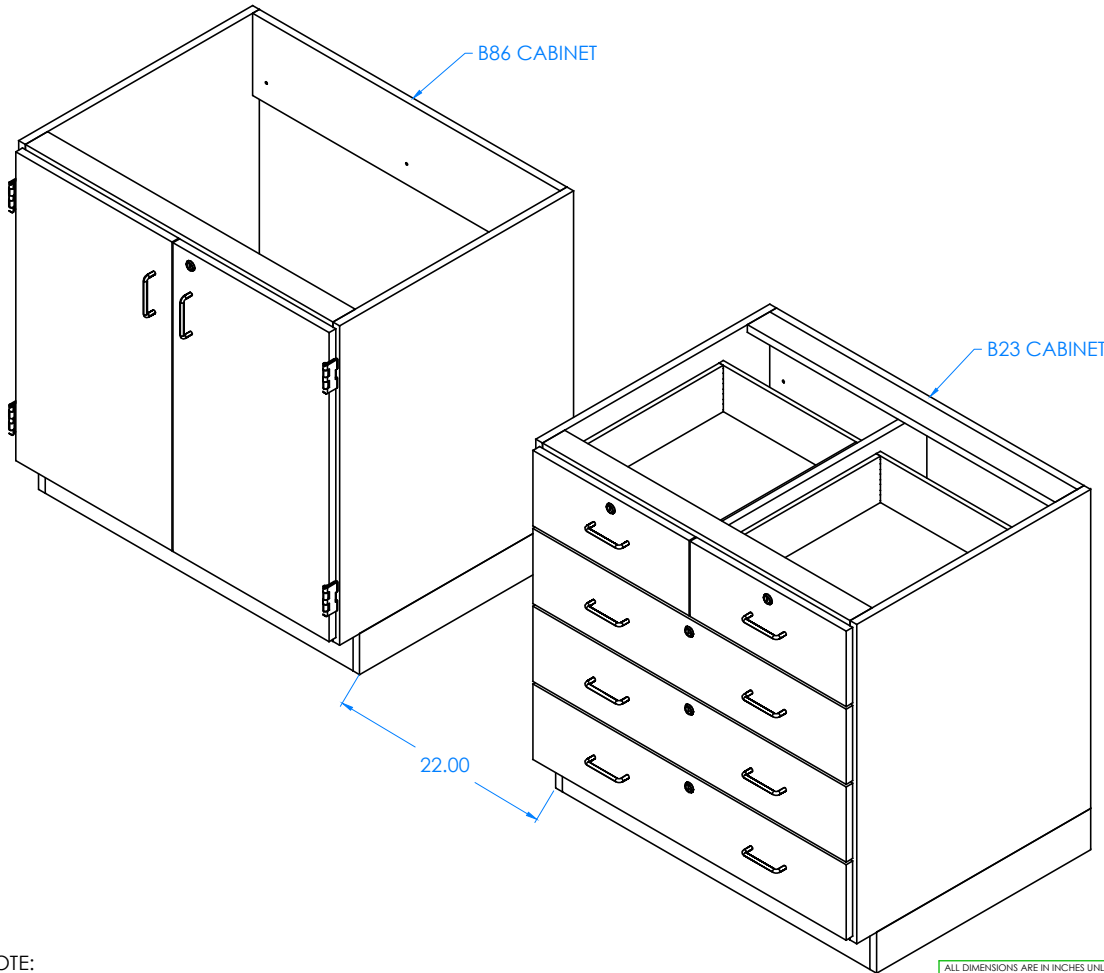
THESE DOCUMENTS ARE SUPPLIED WITH THE UNDERSTANDING THAT THEY WILL NOT BE DISCLOSED TO THIRD PARTIES WITHOUT WRITTEN CONSENT OF DIVERSIFIED WOODCRAFTS, INC. ANY REPRODUCTION IN PART OR WHOLE WITHOUT WRITTEN CONSENT IS SUBJECT TO LEGAL ACTION.



300 South Krueger Street
Suring, WI 54174
diversifiedwoodcrafts.com

TITLE:
**8' INSTRUCTOR DESK
TOOLS AND ASSEMBLY COMPONENTS**

| | | | |
|--|---------------|-------------------|--------------------|
| DRAWING NUMBER: 1114K & KF, 1116K & KF | SCALE: NTS | SHEET: 3 OF 14 | REVISION: REV A |
|--|---------------|-------------------|--------------------|



STEP 1:

- POSITION THE TWO CABINETS IN DESIRED LOCATION.
- IF YOU HAVE A "K" SERIES UNIT, PLACE UNIT OVER UTILITY HOOKUPS.
- LEAVE ENOUGH ROOM IN BETWEEN CABINETS FOR APRON.
- LEVEL CABINETS .
- ATTACH TO FLOOR.

NOTE:

1.

| | | | | |
|---|---------|-----|-----------|---------|
| ALL DIMENSIONS ARE IN INCHES UNLESS NOTED OTHERWISE | DWN BY: | EMR | DATE DWN: | 11/8/16 |
| DECIMALS: X = ± .000 | APR BY: | | DATE APR: | |
| XX = ± .020 | APR BY: | | DATE APR: | |
| XXX = ± .010 | APR BY: | | DATE APR: | |
| ANGLES: = ± 1° | APR BY: | | DATE APR: | |
| CABINET SQUARENESS: = ± .0625 | APR BY: | | DATE APR: | |

CONFIDENTIAL:
ALL DESIGN RIGHTS RESERVED
THE INFORMATION, DATA, DESIGN, AND DRAWINGS EMBODIED IN THIS DOCUMENT AND ALL REPRODUCTIONS THEREOF ARE THE EXCLUSIVE PROPERTY OF DIVERSIFIED WOODCRAFTS, INC.

THESE DOCUMENTS ARE SUPPLIED WITH THE UNDERSTANDING THAT THEY WILL NOT BE DISCLOSED TO THIRD PARTIES WITHOUT WRITTEN CONSENT OF DIVERSIFIED WOODCRAFTS, INC. ANY REPRODUCTION IN PART OR WHOLE WITHOUT WRITTEN CONSENT IS SUBJECT TO LEGAL ACTION.

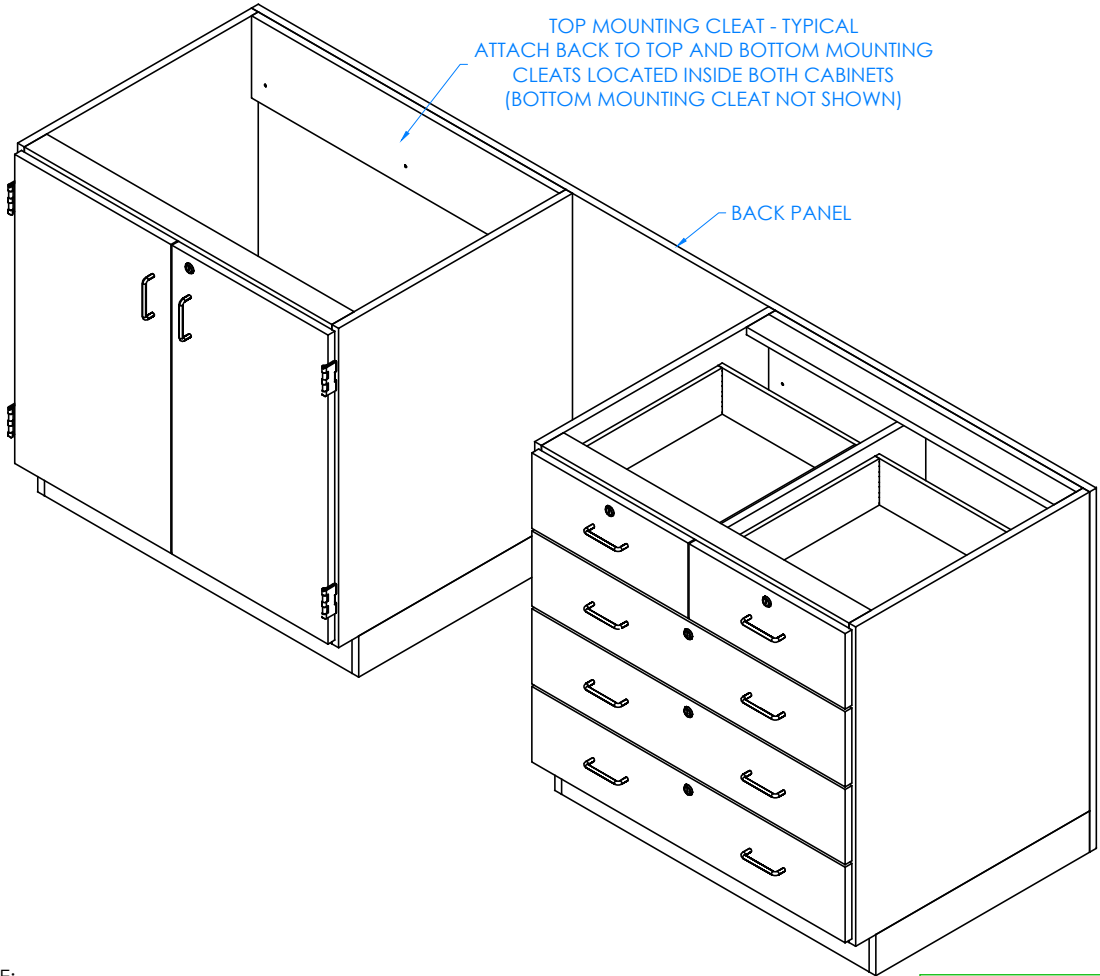


300 South Krueger Street
Suring, WI 54174
diversifiedwoodcrafts.com

TITLE:
8' INSTRUCTOR DESK
ASSEMBLY INSTRUCTIONS

| REV. | DESCRIPTION | DATE | NAME | ECN NO. |
|----------------|-----------------|---------|------|---------|
| A | CREATED DRAWING | 11/8/16 | EMR | - |
| REVISION LEVEL | | | | |

| | | | |
|------------------------|--------|---------|-----------|
| DRAWING NUMBER: | SCALE: | SHEET: | REVISION: |
| 1114K & KF, 1116K & KF | NTS | 4 OF 14 | REV A |



STEP 2:

- ATTACH BACK PANEL TO BACK OF CABINETS WITH HARDWARE PROVIDED.
- SCREW INTO TOP AND BOTTOM MOUNTING CLEATS LOCATED INSIDE BOTH CABINETS.
- MAKE SURE BACK PANEL IS FLUSH WITH OUTSIDE EDGES OF CABINETS.

NOTE:

1.

| | | | | |
|---|---------|-----|-----------|---------|
| ALL DIMENSIONS ARE IN INCHES UNLESS NOTED OTHERWISE | DWN BY: | EMR | DATE DWN: | 11/8/16 |
| DECIMALS: X = ± .000 | APR BY: | | DATE APR: | |
| XX = ± .020 | APR BY: | | DATE APR: | |
| XXX = ± .010 | APR BY: | | DATE APR: | |
| ANGLES: = ± 1° | APR BY: | | DATE APR: | |
| CABINET SQUARENESS: = ± .0625 | APR BY: | | DATE APR: | |

CONFIDENTIAL:
 ALL DESIGN RIGHTS RESERVED
 THE INFORMATION, DATA, DESIGN, AND DRAWINGS EMBODIED IN THIS DOCUMENT AND ALL REPRODUCTIONS THEREOF ARE THE EXCLUSIVE PROPERTY OF DIVERSIFIED WOODCRAFTS, INC.

THESE DOCUMENTS ARE SUPPLIED WITH THE UNDERSTANDING THAT THEY WILL NOT BE DISCLOSED TO THIRD PARTIES WITHOUT WRITTEN CONSENT OF DIVERSIFIED WOODCRAFTS, INC. ANY REPRODUCTION IN PART OR WHOLE WITHOUT WRITTEN CONSENT IS SUBJECT TO LEGAL ACTION.

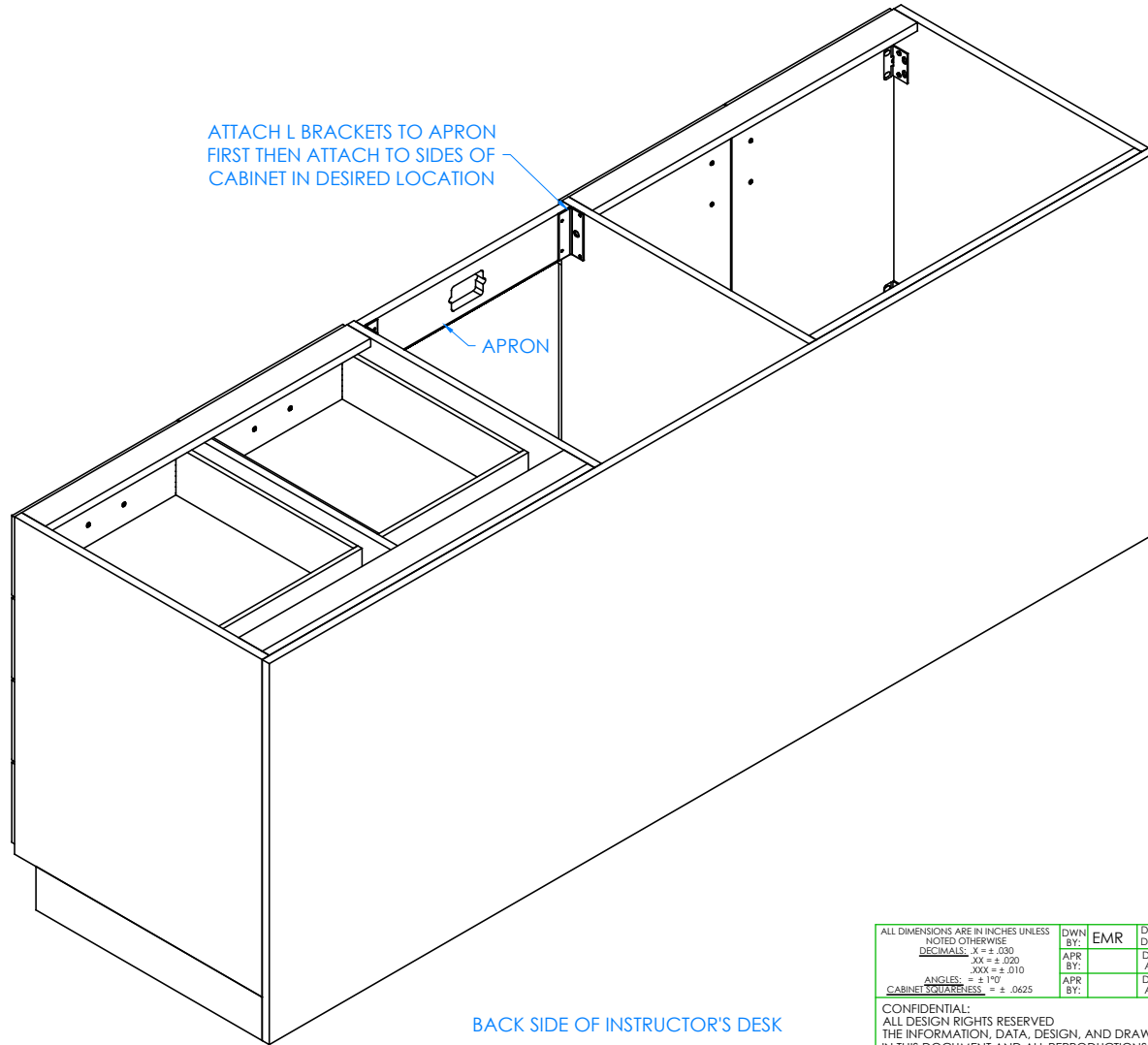


300 South Krueger Street
 Suring, WI 54174
 diversifiedwoodcrafts.com

TITLE:
**8' INSTRUCTOR DESK
 ASSEMBLY INSTRUCTIONS**

| REV. | DESCRIPTION | DATE | NAME | ECN NO. |
|----------------|-----------------|---------|------|---------|
| A | CREATED DRAWING | 11/8/16 | EMR | - |
| REVISION LEVEL | | | | |

| | | | |
|------------------------|--------|---------|-----------|
| DRAWING NUMBER: | SCALE: | SHEET: | REVISION: |
| 1114K & KF, 1116K & KF | NTS | 5 OF 14 | REV A |



ATTACH L BRACKETS TO APRON
FIRST THEN ATTACH TO SIDES OF
CABINET IN DESIRED LOCATION

APRON

BACK SIDE OF INSTRUCTOR'S DESK

NOTE:

1.

STEP 3:

- ATTACH L BRACKETS TO APRON WITH HARDWARE PROVIDED.
- MAKE SURE BRACKETS ARE FLUSH WITH TOP EDGE OF APRON.
- MOUNT APRON TO SIDES OF BOTH CABINETS IN DESIRED LOCATION WITH REMAINING SCREWS.

| | | | | |
|---|---------|-----|-----------|---------|
| ALL DIMENSIONS ARE IN INCHES UNLESS NOTED OTHERWISE | DWN BY: | EMR | DATE DWN: | 11/8/16 |
| DECIMALS: $\frac{1}{16}$ = ± .030 | APR BY: | | DATE APR: | |
| $\frac{1}{32}$ = ± .020 | APR BY: | | DATE APR: | |
| $\frac{1}{64}$ = ± .010 | APR BY: | | DATE APR: | |
| ANGLES: = ± 1° | APR BY: | | DATE APR: | |
| CABINET SQUARENESS: = ± .0625 | APR BY: | | DATE APR: | |

CONFIDENTIAL:
ALL DESIGN RIGHTS RESERVED
THE INFORMATION, DATA, DESIGN, AND DRAWINGS EMBODIED
IN THIS DOCUMENT AND ALL REPRODUCTIONS THEREOF ARE
THE EXCLUSIVE PROPERTY OF DIVERSIFIED WOODCRAFTS, INC.

THESE DOCUMENTS ARE SUPPLIED WITH THE UNDERSTANDING
THAT THEY WILL NOT BE DISCLOSED TO THIRD PARTIES WITHOUT
WRITTEN CONSENT OF DIVERSIFIED WOODCRAFTS, INC. ANY
REPRODUCTION IN PART OR WHOLE WITHOUT WRITTEN
CONSENT IS SUBJECT TO LEGAL ACTION.



300 South Krueger Street
Suring, WI 54174
diversifiedwoodcrafts.com

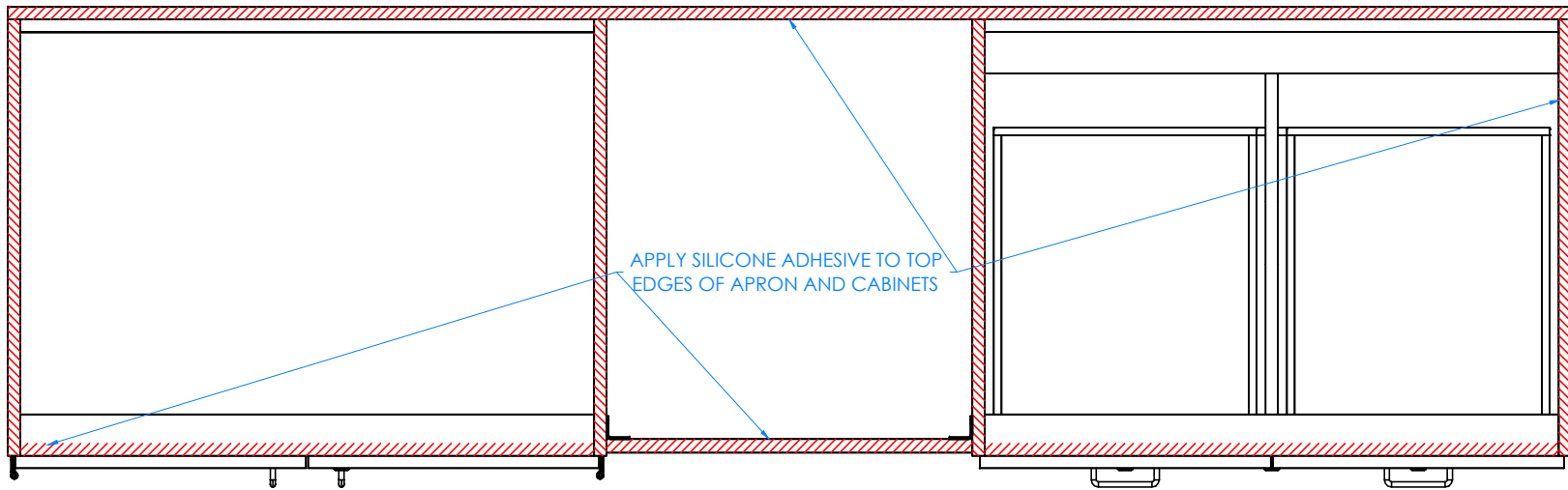
TITLE:
8' INSTRUCTOR DESK
ASSEMBLY INSTRUCTIONS

| A | CREATED DRAWING | 11/8/16 | EMR | - |
|----------------|-----------------|---------|------|---------|
| REV. | DESCRIPTION | DATE | NAME | ECN NO. |
| REVISION LEVEL | | | | |

| | | | |
|------------------------|--------|---------|-----------|
| DRAWING NUMBER: | SCALE: | SHEET: | REVISION: |
| 1114K & KF, 1116K & KF | NTS | 6 OF 14 | REV A |

STEP 4:

- APPLY SILICONE ADHESIVE TO TOP EDGES OF CABINETS AND APRON.
- PLACE TOP ON UNIT WITH PROPER OVERHANG (1" OVERHANG ON SIDES AND 1.50" ON FRONT AND BACK).
- CLAMP ON TOP TO TOP RAILS OF CABINETS AND APRON TO REMOVE ANY WARP USING SHIMS AND C-CLAMPS, IF NEEDED, WHEN ALIGNING THE TOP (DO THIS BEFORE ADHESIVE ON EDGES SETS UP).
- LET CURE FOR 6-12 HOURS.



TOP VIEW OF INSTRUCTOR'S DESK SHOWN


NOTE:

1.

| | | | | | |
|---|--|---------|-----|-----------|---------|
| ALL DIMENSIONS ARE IN INCHES UNLESS NOTED OTHERWISE | | DWN BY: | EMR | DATE DWN: | 11/8/16 |
| DECIMALS: X = ± .000 | | APR BY: | | DATE APR: | |
| XX = ± .020 | | APR BY: | | DATE APR: | |
| XXX = ± .010 | | APR BY: | | DATE APR: | |
| ANGLES: = ± 1° | | APR BY: | | DATE APR: | |
| CABINET SQUARENESS: = ± .0625 | | APR BY: | | DATE APR: | |

CONFIDENTIAL:
 ALL DESIGN RIGHTS RESERVED
 THE INFORMATION, DATA, DESIGN, AND DRAWINGS EMBODIED IN THIS DOCUMENT AND ALL REPRODUCTIONS THEREOF ARE THE EXCLUSIVE PROPERTY OF DIVERSIFIED WOODCRAFTS, INC.

THESE DOCUMENTS ARE SUPPLIED WITH THE UNDERSTANDING THAT THEY WILL NOT BE DISCLOSED TO THIRD PARTIES WITHOUT WRITTEN CONSENT OF DIVERSIFIED WOODCRAFTS, INC. ANY REPRODUCTION IN PART OR WHOLE WITHOUT WRITTEN CONSENT IS SUBJECT TO LEGAL ACTION.



300 South Krueger Street
 Suring, WI 54174
 diversifiedwoodcrafts.com

TITLE:
**8' INSTRUCTOR DESK
 ASSEMBLY INSTRUCTIONS**

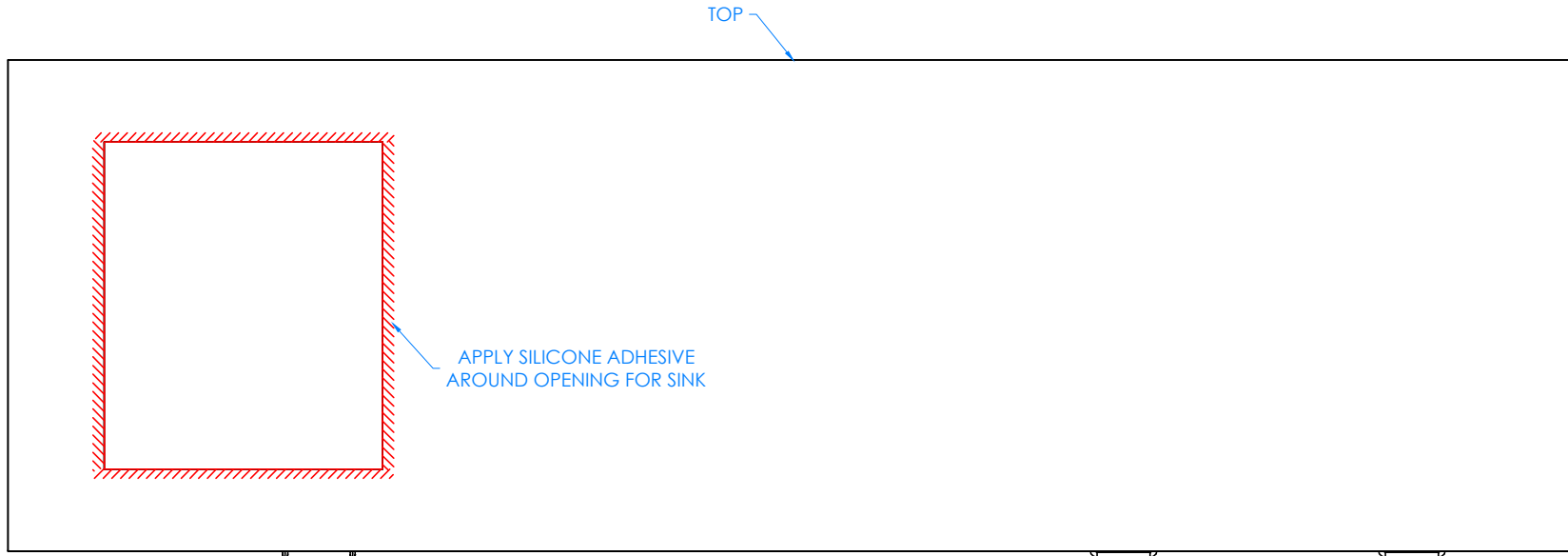
| A | CREATED DRAWING | 11/8/16 | EMR | - |
|------|-----------------|---------|------|---------|
| REV. | DESCRIPTION | DATE | NAME | ECN NO. |
| | | | | |

REVISION LEVEL

| | | | |
|------------------------|--------|---------|-----------|
| DRAWING NUMBER: | SCALE: | SHEET: | REVISION: |
| 1114K & KF, 1116K & KF | NTS | 7 OF 14 | REV A |

STEP 5:

- IF YOU DO NOT HAVE A "K" SERIES UNIT, SKIP TO STEP 6.
- APPLY SILICONE ADHESIVE TO SINK OPENING ON TOP.
- LOWER SINK INTO OPENING.
- WIPE OFF ANY EXCESS CAULK AND ALLOW TO SET.
- LET CURE FOR 6-12 HOURS.



TOP VIEW OF INSTRUCTOR'S DESK SHOWN


NOTE:

1.

| | | | | | |
|---|--|---------|-----|-----------|---------|
| ALL DIMENSIONS ARE IN INCHES UNLESS NOTED OTHERWISE | | DWN BY: | EMR | DATE DWN: | 11/8/16 |
| DECIMALS: $X = \pm .000$ | | APR BY: | | DATE APR: | |
| $XX = \pm .020$ | | APR BY: | | DATE APR: | |
| $XXX = \pm .010$ | | APR BY: | | DATE APR: | |
| ANGLES: $= \pm 1^{\circ}0'$ | | APR BY: | | DATE APR: | |
| CABINET SQUARENESS: $= \pm .0625$ | | APR BY: | | DATE APR: | |

CONFIDENTIAL:
ALL DESIGN RIGHTS RESERVED
THE INFORMATION, DATA, DESIGN, AND DRAWINGS EMBODIED IN THIS DOCUMENT AND ALL REPRODUCTIONS THEREOF ARE THE EXCLUSIVE PROPERTY OF DIVERSIFIED WOODCRAFTS, INC.

THESE DOCUMENTS ARE SUPPLIED WITH THE UNDERSTANDING THAT THEY WILL NOT BE DISCLOSED TO THIRD PARTIES WITHOUT WRITTEN CONSENT OF DIVERSIFIED WOODCRAFTS, INC. ANY REPRODUCTION IN PART OR WHOLE WITHOUT WRITTEN CONSENT IS SUBJECT TO LEGAL ACTION.



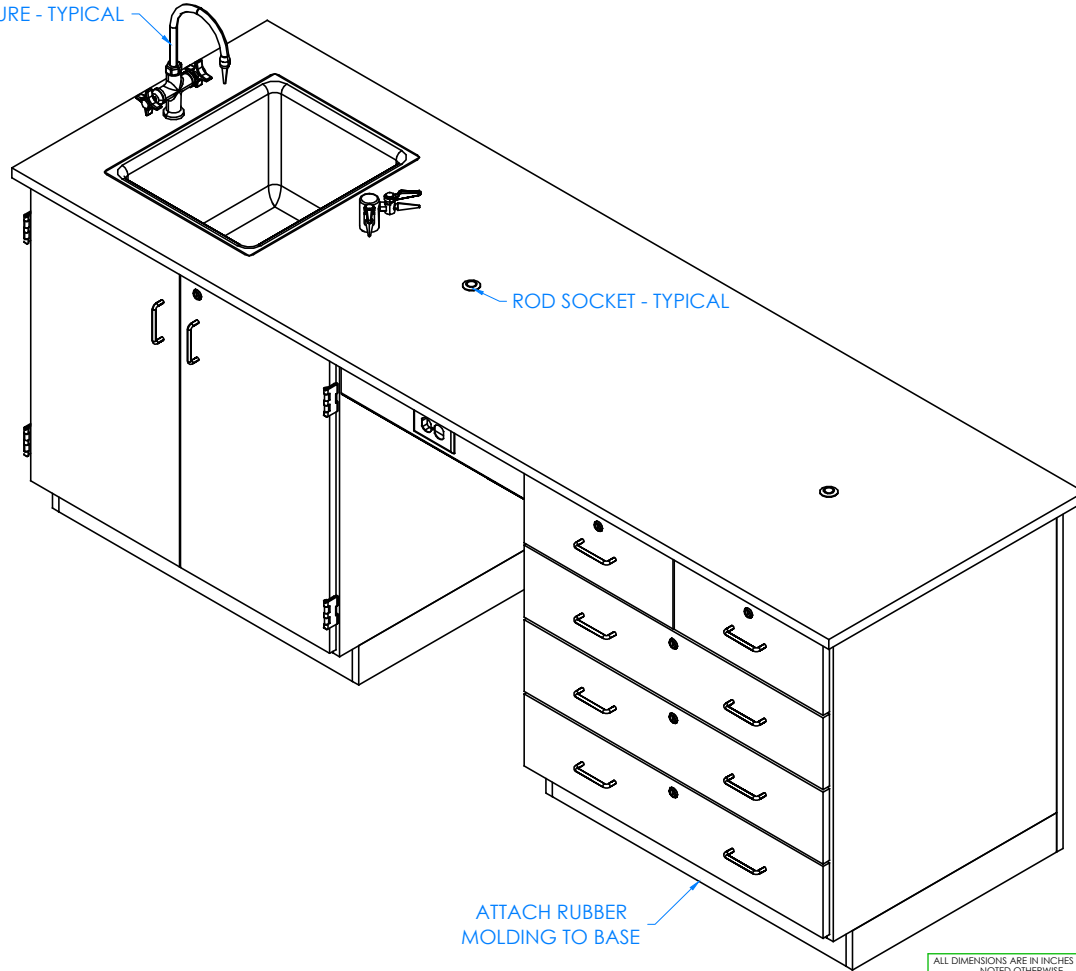
300 South Krueger Street
Suring, WI 54174
diversifiedwoodcrafts.com

TITLE:
**8' INSTRUCTOR DESK
ASSEMBLY INSTRUCTIONS**

| | | | |
|---------------------------------------|--------|---------|-----------|
| DRAWING NUMBER: | SCALE: | SHEET: | REVISION: |
| 1114K & KF, 1116K & KF | NTS | 8 OF 14 | REV A |

| REV. | DESCRIPTION | DATE | NAME | ECN NO. |
|----------------|-----------------|---------|------|---------|
| A | CREATED DRAWING | 11/8/16 | EMR | - |
| REVISION LEVEL | | | | |

FIXTURE - TYPICAL



STEP 6:

- ATTACH RUBBER MOLDING TO BASE OF INSTRUCTOR'S DESK USING CONTACT CEMENT.
- SCREW STAINLESS STEEL CORNER BRACKETS ON EACH CORNER OVER BASE MOLDING WITH HARDWARE PROVIDED.
- IF YOU HAVE A "K" SERIES UNIT, INSTALL FIXTURES IN THE HOLES PROVIDED ON TOP.
- INSERT ROD SOCKETS INTO PRE-DRILLED HOLES IN TOP.
- SEE NEXT PAGE ON HOW TO INSTALL UPRIGHTS AND CROSSBAR.

NOTE:

1. ALL WATER, ELECTRICAL, AND GAS CONNECTIONS SHOULD BE PERFORMED BY A TRAINED PROFESSIONAL PER LOCAL CODE.

| | | | |
|---|--------------|-----------|---------|
| ALL DIMENSIONS ARE IN INCHES UNLESS NOTED OTHERWISE | | | |
| DECIMALS: | X = ± .030 | DWN BY: | EMR |
| | XX = ± .020 | DATE DWN: | 11/8/16 |
| | XXX = ± .010 | APR BY: | |
| ANGLES: | = ± 1° | DATE APR: | |
| CABINET SQUARENESS: | = ± .0625 | APR BY: | |

CONFIDENTIAL:
 ALL DESIGN RIGHTS RESERVED
 THE INFORMATION, DATA, DESIGN, AND DRAWINGS EMBODIED IN THIS DOCUMENT AND ALL REPRODUCTIONS THEREOF ARE THE EXCLUSIVE PROPERTY OF DIVERSIFIED WOODCRAFTS, INC.

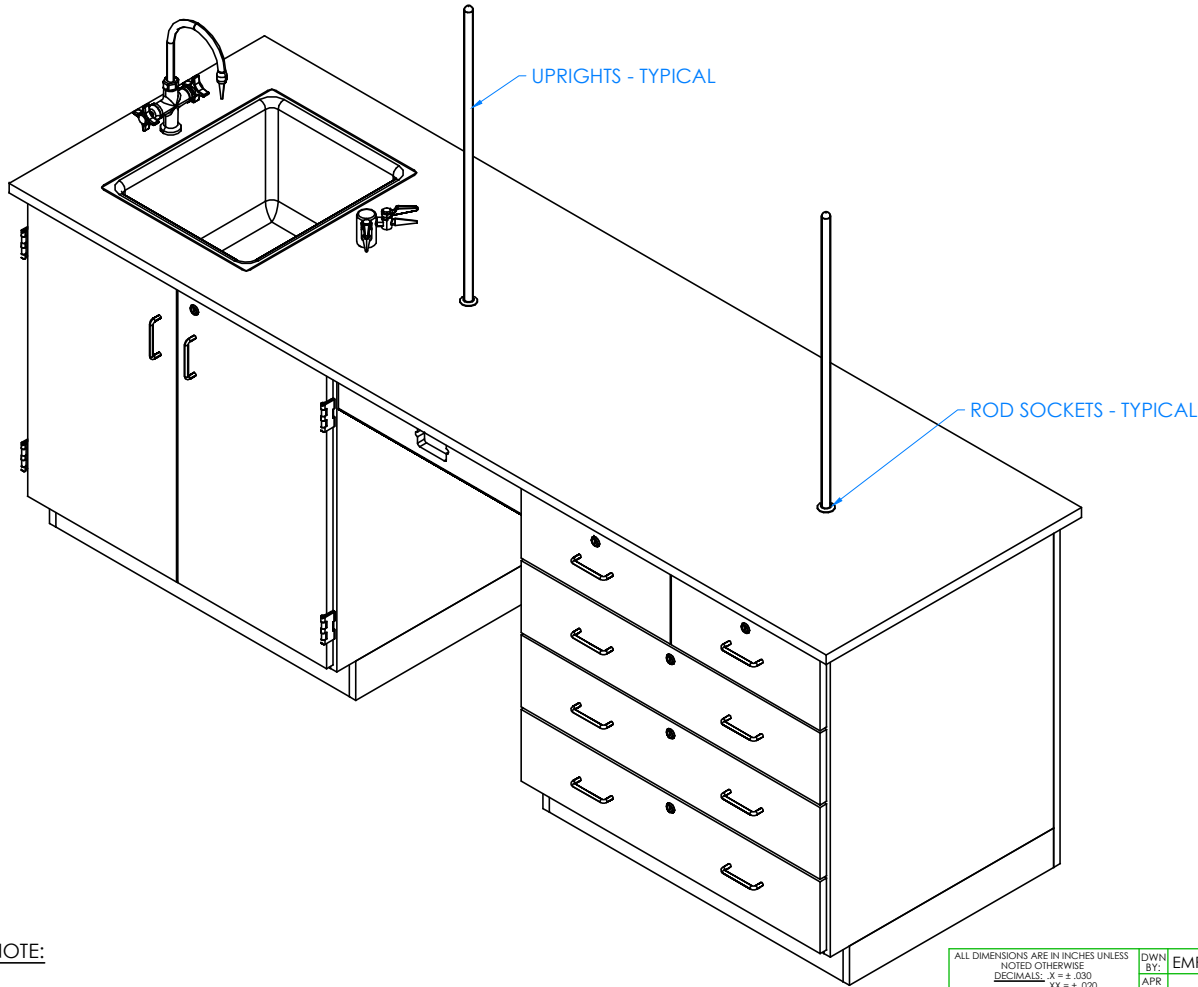
THESE DOCUMENTS ARE SUPPLIED WITH THE UNDERSTANDING THAT THEY WILL NOT BE DISCLOSED TO THIRD PARTIES WITHOUT WRITTEN CONSENT OF DIVERSIFIED WOODCRAFTS, INC. ANY REPRODUCTION IN PART OR WHOLE WITHOUT WRITTEN CONSENT IS SUBJECT TO LEGAL ACTION.

300 South Krueger Street
 Suring, WI 54174
 diversifiedwoodcrafts.com

TITLE:
 8' INSTRUCTOR DESK
 ASSEMBLY INSTRUCTIONS

| REV. | DESCRIPTION | DATE | NAME | ECN NO. |
|----------------|-----------------|---------|------|---------|
| A | CREATED DRAWING | 11/8/16 | EMR | - |
| REVISION LEVEL | | | | |

| | | | |
|------------------------|--------|---------|-----------|
| DRAWING NUMBER: | SCALE: | SHEET: | REVISION: |
| 1114K & KF, 1116K & KF | NTS | 9 OF 14 | REV A |



STEP 7:

- INSERT TAPERED END ON UPRIGHTS INTO ROD SOCKETS ON THE TOP.

NOTE:

1.

| | | | | |
|---|---------|-----|-----------|---------|
| ALL DIMENSIONS ARE IN INCHES UNLESS NOTED OTHERWISE | DWN BY: | EMR | DATE DWN: | 11/8/16 |
| DECIMALS: X = ± .000 | APR BY: | | DATE APR: | |
| XX = ± .020 | APR BY: | | DATE APR: | |
| XXX = ± .010 | APR BY: | | DATE APR: | |
| ANGLES: = ± 1°0' | APR BY: | | DATE APR: | |
| CABINET SQUARENESS: = ± .0625 | APR BY: | | DATE APR: | |

CONFIDENTIAL:
ALL DESIGN RIGHTS RESERVED
THE INFORMATION, DATA, DESIGN, AND DRAWINGS EMBODIED IN THIS DOCUMENT AND ALL REPRODUCTIONS THEREOF ARE THE EXCLUSIVE PROPERTY OF DIVERSIFIED WOODCRAFTS, INC.

THESE DOCUMENTS ARE SUPPLIED WITH THE UNDERSTANDING THAT THEY WILL NOT BE DISCLOSED TO THIRD PARTIES WITHOUT WRITTEN CONSENT OF DIVERSIFIED WOODCRAFTS, INC. ANY REPRODUCTION IN PART OR WHOLE WITHOUT WRITTEN CONSENT IS SUBJECT TO LEGAL ACTION.

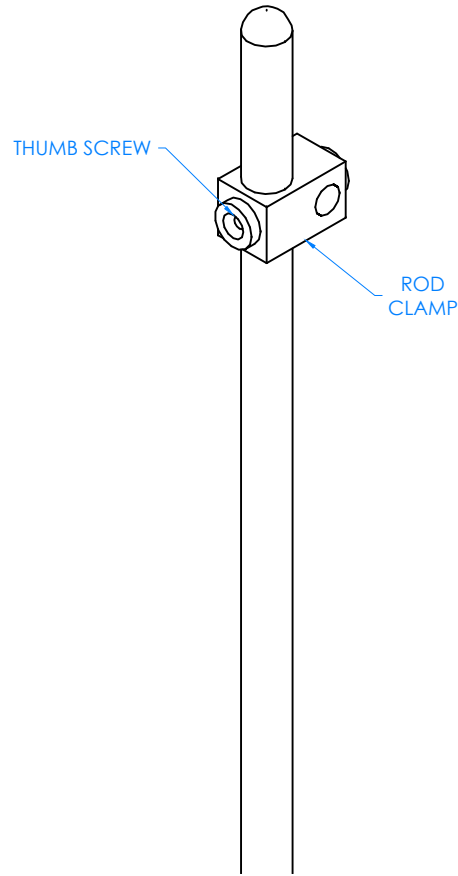


300 South Krueger Street
Suring, WI 54174
diversifiedwoodcrafts.com

TITLE:
**8' INSTRUCTOR DESK
ASSEMBLY INSTRUCTIONS**

| REV. | DESCRIPTION | DATE | NAME | ECN NO. |
|----------------|-----------------|---------|------|---------|
| A | CREATED DRAWING | 11/8/16 | EMR | - |
| REVISION LEVEL | | | | |

| | | | |
|------------------------|--------|----------|-----------|
| DRAWING NUMBER: | SCALE: | SHEET: | REVISION: |
| 1114K & KF, 1116K & KF | NTS | 10 OF 14 | REV A |



STEP 8:

- SLIDE ROD CLAMPS OVER UPRIGHT AND TIGHTEN IN DESIRED LOCATION USING THUMB SCREWS PROVIDED ON CLAMPS.
- REPEAT ON OTHER UPRIGHT

NOTE:

1.

CLOSE UP OF UPRIGHT

| | | | | |
|---|---------|-----|-----------|---------|
| ALL DIMENSIONS ARE IN INCHES UNLESS NOTED OTHERWISE | DWN BY: | EMR | DATE DWN: | 11/8/16 |
| DECIMALS: $\times = \pm .000$ | APR BY: | | DATE APR: | |
| XX = $\pm .020$ | APR BY: | | DATE APR: | |
| XXX = $\pm .010$ | APR BY: | | DATE APR: | |
| ANGLES: = $\pm 1^{\circ}$ | APR BY: | | DATE APR: | |
| CABINET SQUARENESS: = $\pm .0625$ | APR BY: | | DATE APR: | |

CONFIDENTIAL:
 ALL DESIGN RIGHTS RESERVED
 THE INFORMATION, DATA, DESIGN, AND DRAWINGS EMBODIED IN THIS DOCUMENT AND ALL REPRODUCTIONS THEREOF ARE THE EXCLUSIVE PROPERTY OF DIVERSIFIED WOODCRAFTS, INC.

THESE DOCUMENTS ARE SUPPLIED WITH THE UNDERSTANDING THAT THEY WILL NOT BE DISCLOSED TO THIRD PARTIES WITHOUT WRITTEN CONSENT OF DIVERSIFIED WOODCRAFTS, INC. ANY REPRODUCTION IN PART OR WHOLE WITHOUT WRITTEN CONSENT IS SUBJECT TO LEGAL ACTION.



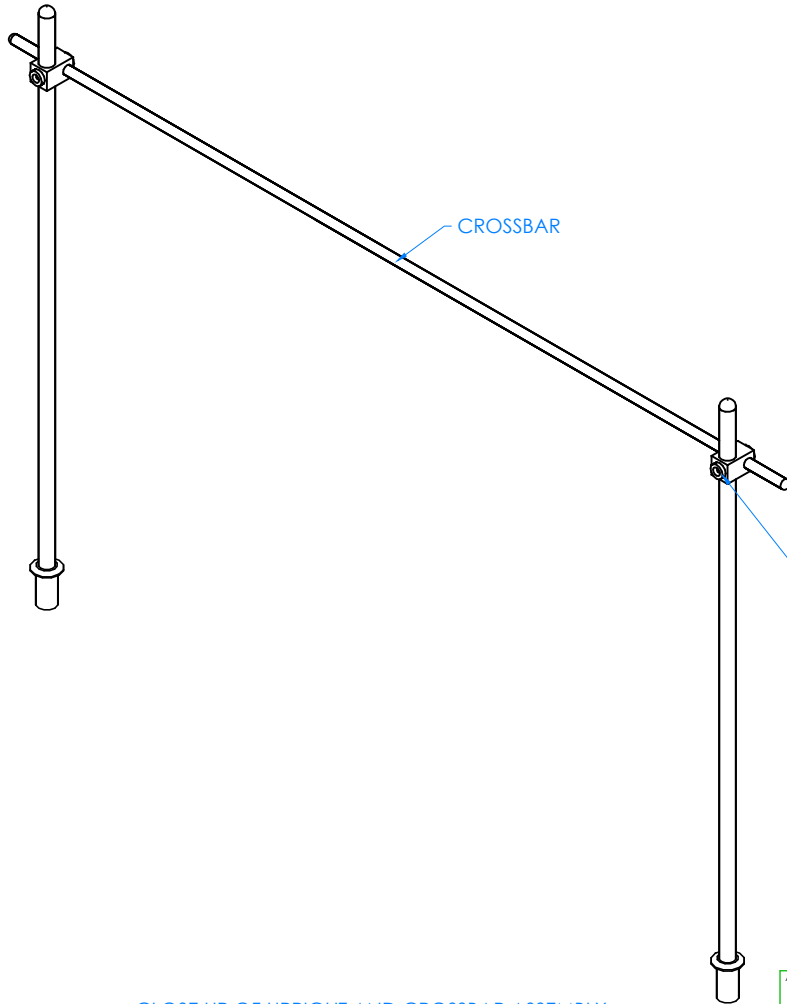
300 South Krueger Street
 Suring, WI 54174
 diversifiedwoodcrafts.com

TITLE:
 8' INSTRUCTOR DESK
 ASSEMBLY INSTRUCTIONS

| REV. | DESCRIPTION | DATE | NAME | ECN NO. |
|------|-----------------|---------|------|---------|
| A | CREATED DRAWING | 11/8/16 | EMR | - |

REVISION LEVEL

| | | | |
|------------------------|--------|----------|-----------|
| DRAWING NUMBER: | SCALE: | SHEET: | REVISION: |
| 1114K & KF, 1116K & KF | NTS | 11 OF 14 | REV A |



STEP 9:

- SLIDE CROSSBAR THROUGH ONE CLAMP.
- POSITION OTHER END THROUGH OTHER CLAMP.

NOTE:


1.

CLOSE UP OF UPRIGHT AND CROSSBAR ASSEMBLY

| | | | | |
|---|---------|-----|-----------|---------|
| ALL DIMENSIONS ARE IN INCHES UNLESS NOTED OTHERWISE | DWN BY: | EMR | DATE DWN: | 11/8/16 |
| DECIMALS: $\frac{1}{16}$ = ± .000 | APR BY: | | DATE APR: | |
| XX = ± .020 | APR BY: | | DATE APR: | |
| XXX = ± .010 | APR BY: | | DATE APR: | |
| ANGLES: = ± 1° | APR BY: | | DATE APR: | |
| CABINET SQUARENESS: = ± .0625 | APR BY: | | DATE APR: | |

CONFIDENTIAL:
 ALL DESIGN RIGHTS RESERVED
 THE INFORMATION, DATA, DESIGN, AND DRAWINGS EMBODIED IN THIS DOCUMENT AND ALL REPRODUCTIONS THEREOF ARE THE EXCLUSIVE PROPERTY OF DIVERSIFIED WOODCRAFTS, INC.

THESE DOCUMENTS ARE SUPPLIED WITH THE UNDERSTANDING THAT THEY WILL NOT BE DISCLOSED TO THIRD PARTIES WITHOUT WRITTEN CONSENT OF DIVERSIFIED WOODCRAFTS, INC. ANY REPRODUCTION IN PART OR WHOLE WITHOUT WRITTEN CONSENT IS SUBJECT TO LEGAL ACTION.

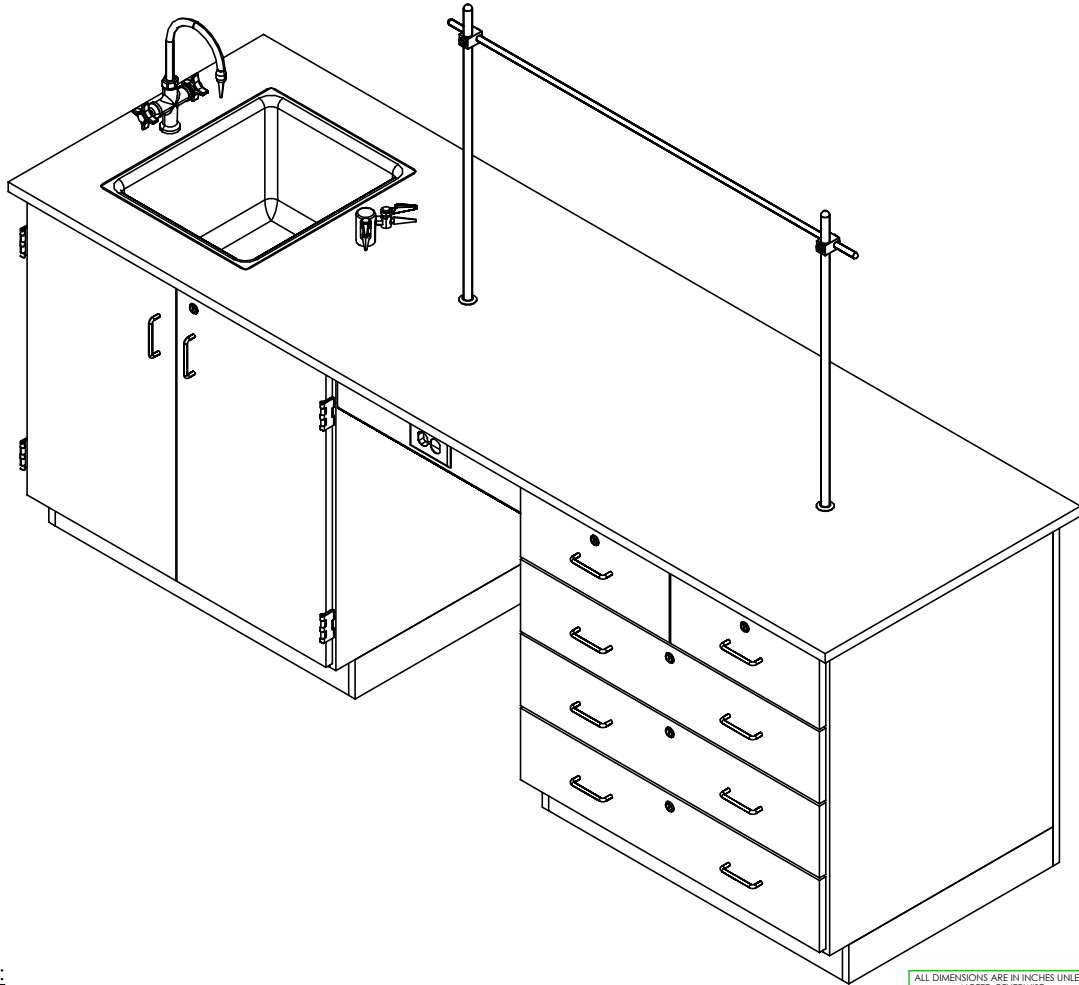


300 South Krueger Street
 Suring, WI 54174
 diversifiedwoodcrafts.com

TITLE:
**8' INSTRUCTOR DESK
 ASSEMBLY INSTRUCTIONS**

| REV. | DESCRIPTION | DATE | NAME | ECN NO. |
|----------------|-----------------|---------|------|---------|
| A | CREATED DRAWING | 11/8/16 | EMR | - |
| REVISION LEVEL | | | | |

| | | | |
|------------------------|--------|----------|-----------|
| DRAWING NUMBER: | SCALE: | SHEET: | REVISION: |
| 1114K & KF, 1116K & KF | NTS | 12 OF 14 | REV A |



COMPLETE UNIT SHOWN

NOTE:

1.

| | | | | |
|---|---------|-----|-----------|---------|
| ALL DIMENSIONS ARE IN INCHES UNLESS NOTED OTHERWISE | DWN BY: | EMR | DATE DWN: | 11/8/16 |
| DECIMALS: X = ± .000 | APR BY: | | DATE APR: | |
| XX = ± .020 | APR BY: | | DATE APR: | |
| XXX = ± .010 | APR BY: | | DATE APR: | |
| ANGLES: = ± 1° | APR BY: | | DATE APR: | |
| CABINET SQUARENESS: = ± .0625 | APR BY: | | DATE APR: | |

CONFIDENTIAL:
 ALL DESIGN RIGHTS RESERVED
 THE INFORMATION, DATA, DESIGN, AND DRAWINGS EMBODIED IN THIS DOCUMENT AND ALL REPRODUCTIONS THEREOF ARE THE EXCLUSIVE PROPERTY OF DIVERSIFIED WOODCRAFTS, INC.

THESE DOCUMENTS ARE SUPPLIED WITH THE UNDERSTANDING THAT THEY WILL NOT BE DISCLOSED TO THIRD PARTIES WITHOUT WRITTEN CONSENT OF DIVERSIFIED WOODCRAFTS, INC. ANY REPRODUCTION IN PART OR WHOLE WITHOUT WRITTEN CONSENT IS SUBJECT TO LEGAL ACTION.



300 South Krueger Street
 Suring, WI 54174
 diversifiedwoodcrafts.com

TITLE:
 8' INSTRUCTOR DESK
 ASSEMBLY INSTRUCTIONS

| REV. | DESCRIPTION | DATE | NAME | ECN NO. |
|----------------|-----------------|---------|------|---------|
| A | CREATED DRAWING | 11/8/16 | EMR | - |
| REVISION LEVEL | | | | |

| | | | |
|------------------------|--------|----------|-----------|
| DRAWING NUMBER: | SCALE: | SHEET: | REVISION: |
| 1114K & KF, 1116K & KF | NTS | 13 OF 14 | REV A |

TROUBLESHOOTING YOUR GFCI ELECTRICAL RECEPTACLE:

PLEASE NOTE: THROUGHOUT ANY OF THE FOLLOWING STEPS (PROCEDURES); IF YOU ARE NOT SURE YOU CAN DO THIS JOB SAFELY, AND COMPETENTLY, REFER THIS WORK TO QUALIFIED PROFESSIONAL!

If your unit comes equipped with a GFCI (Ground Fault Circuit Interrupter) electrical receptacle, and there is no power in the receptacle please consider/check the following:

- The extension cord (if being used) is working properly.
- The breaker hasn't been tripped, or turned off.

This type of GFCI has two testing-related buttons on it. One button is appropriately labeled "TEST", and the other button is labeled "RESET". To test the GFCI receptacle follow these steps:

- Plug in an appliance (lamp or night light) into the outlet. The light should now be on. Then press the "TEST" button on the GFCI. The GFCI "RESET" button should pop out, and the light should go out.
- If the "RESET" button pops out, but the light doesn't go out, the GFCI has been improperly wired. In this case please contact a certified professional. There may also be a problem with other wiring in the same circuit.
- If the "RESET" button doesn't pop out, the GFCI is defective, or malfunctioned, and should be replaced.
- If the GFCI is functioning properly, and the lamp goes out, press the "RESET" button to restore power to the outlet.

Conversely, if you have a GFI that has tripped (which is common) and it will not reset, you may have a wiring short in the circuit, a defective appliance on the circuit, or the GFI itself has become defective. To test a tripping GFCI follow these steps:

- Remove every appliance connected to the GFCI's circuit and reset it. If it doesn't reset there may either be a wiring fault behind a socket outlet, or your GFCI itself has become faulty.
- Make sure whatever you are plugging into to the GFCI is dry and not damaged.
- Only plug in one item at a time. If you are plugging in a defective item it will cause the GFCI to trip, and that item therefore should be replaced.

If you are still having difficulty the easiest way to troubleshoot a GFI is to obtain a GFI tester, which is available at most hardware stores. It plugs into the GFI outlet, and will supply you with a "snapshot" of your connections, indicating wiring problems and/or the condition of the GFI. Another way to troubleshoot is to simply purchase a new GFI and install it.