

# KANTARA

## STYLE GUIDE

---

FOR ORDERING CUSTOM-WOVEN  
MOROCCAN RUGS







Kantara is a fair trade design business specializing in ethically-sourced vintage, handwoven, and custom-designed Moroccan rugs for residential & commercial interiors.







Every tribal region in Morocco has its own unique weaving style.

For over a decade, we have worked with artisans throughout the Atlas Mountains who are highly skilled at weaving all the different styles of Moroccan rugs.

We are passionate about commissioning custom-designed rugs from the artisans. This is the most direct way to support the local weaving tradition in rural Morocco and to foster the economic development of the women weavers.





**The Kantara Style Guide is a collection of our favorite rug designs; it showcases the artistry, craftsmanship, and incredible variety of Moroccan rugs:**

**1) From different tribal regions:**

- Beni Ourain
- Azilal
- Glaoui
- Ait Ouaouzguite

**2) With different weave types:**

- Short pile
- Long pile
- Flat weave
- Boucherouite

**3) Using different materials:**

- Wool
- Cotton
- Fabric





## CUSTOM ORDER OVERVIEW

- **LEAD TIME:** 6-10 weeks
- **MAX. WIDTH:** 15 feet
- **MAX. LENGTH:** Any length
- **PRICING:** \$35-\$65/sq. ft
- **INTERIORS:** Residential & Commercial

## AVAILABLE SPECIFICATIONS

- **COLOR:** Natural sheep wool, vegetable-dyed fiber
- **DESIGN:** Abstract, Geometric, Beni Ourain, Azilal, Contemporary
- **PILE HEIGHT:** Low to High Pile, Flatweave kilim
- **MATERIALS:** Wool, Cotton, etc





- BENI OURAIN STYLE RUG
- HIGH PILE







- BENI OURAIN STYLE RUG
- CUSTOM COLORS & SIZE





- BENI OURAIN STYLE RUG
- INVERTED COLORS





- BENI OURAIN STYLE RUG
- HANDSPUN WOOL WARP (FRINGE)





- CONTEMPORARY DESIGN
- HIGH PILE RUG







#1 Full rug



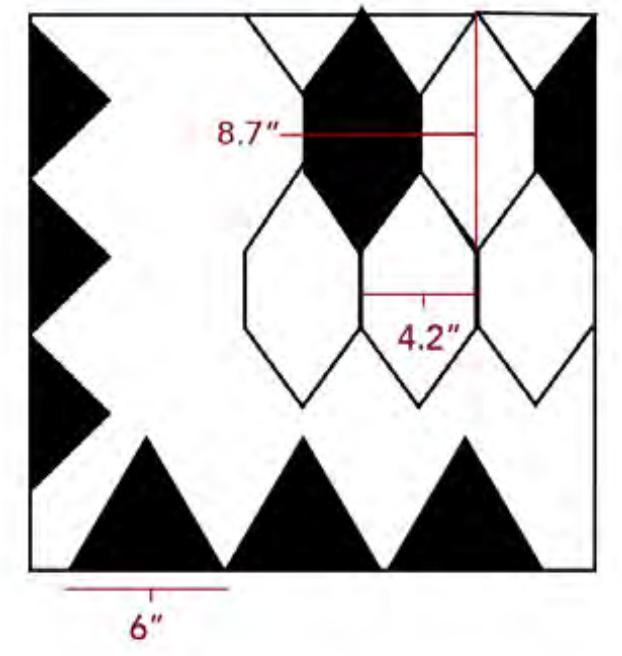
161"

32"

Reference



Detail view







• WARP (FRINGE) MAY BE BRAIDED, KNOTTED, OR TWISTED

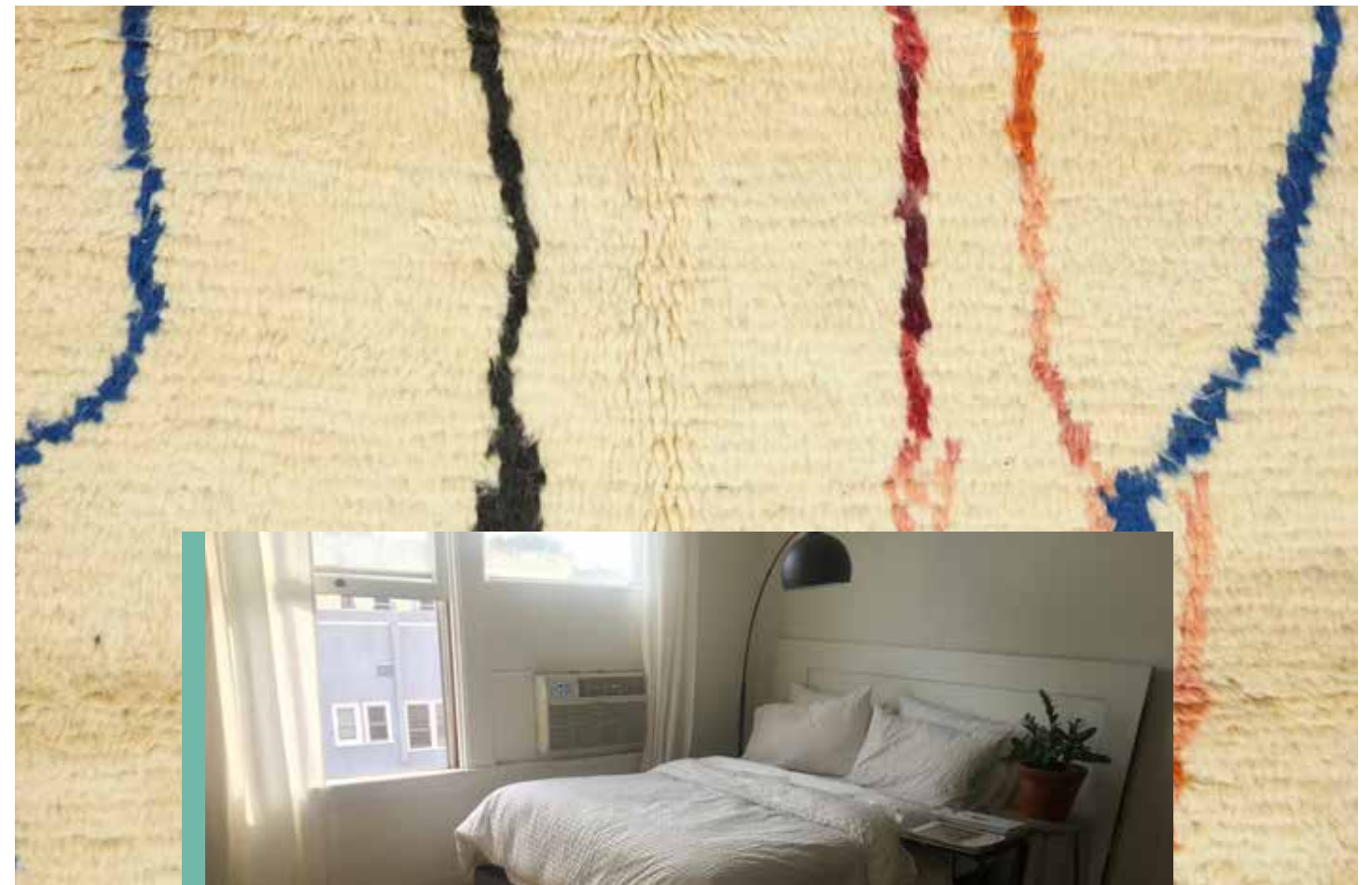




- CONTEMPORARY DESIGN
- HIGH PILE, BRAIDED WARP (FRINGE)

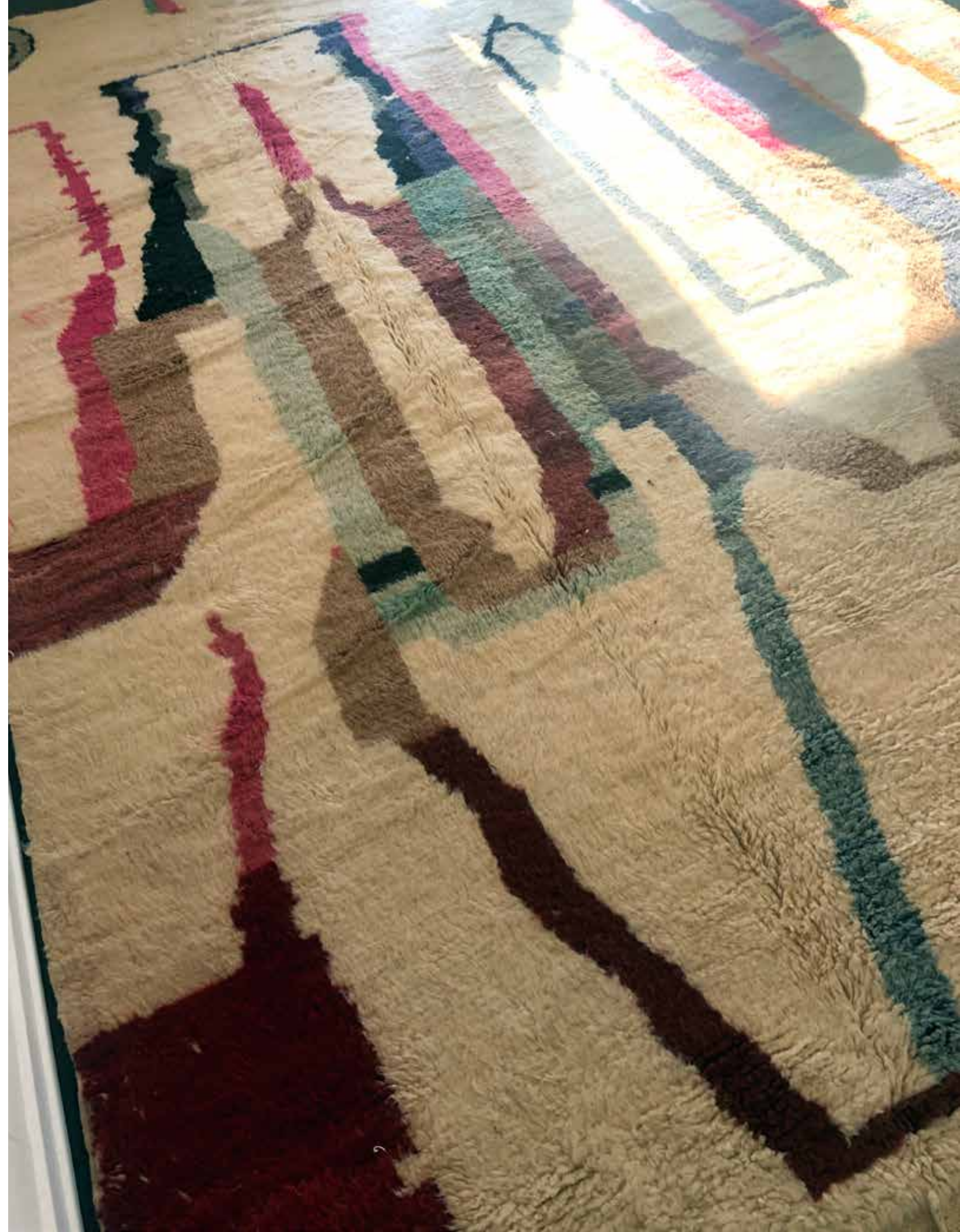






- AZILAL STYLE RUG
- IVORY WHITE BASE COLOR













• MIXED FIBER CONTENT OF WOOL & COLORFUL COTTON





- CUSTOM DESIGN PATTERNS, COLORS, & EXACT SIZE OF RUG





• MIXED FIBER CONTENT OF WOOL & COLORFUL COTTON





































- HIGH ATLAS RUGS
- SHORT PILE, HAND KNOTTED





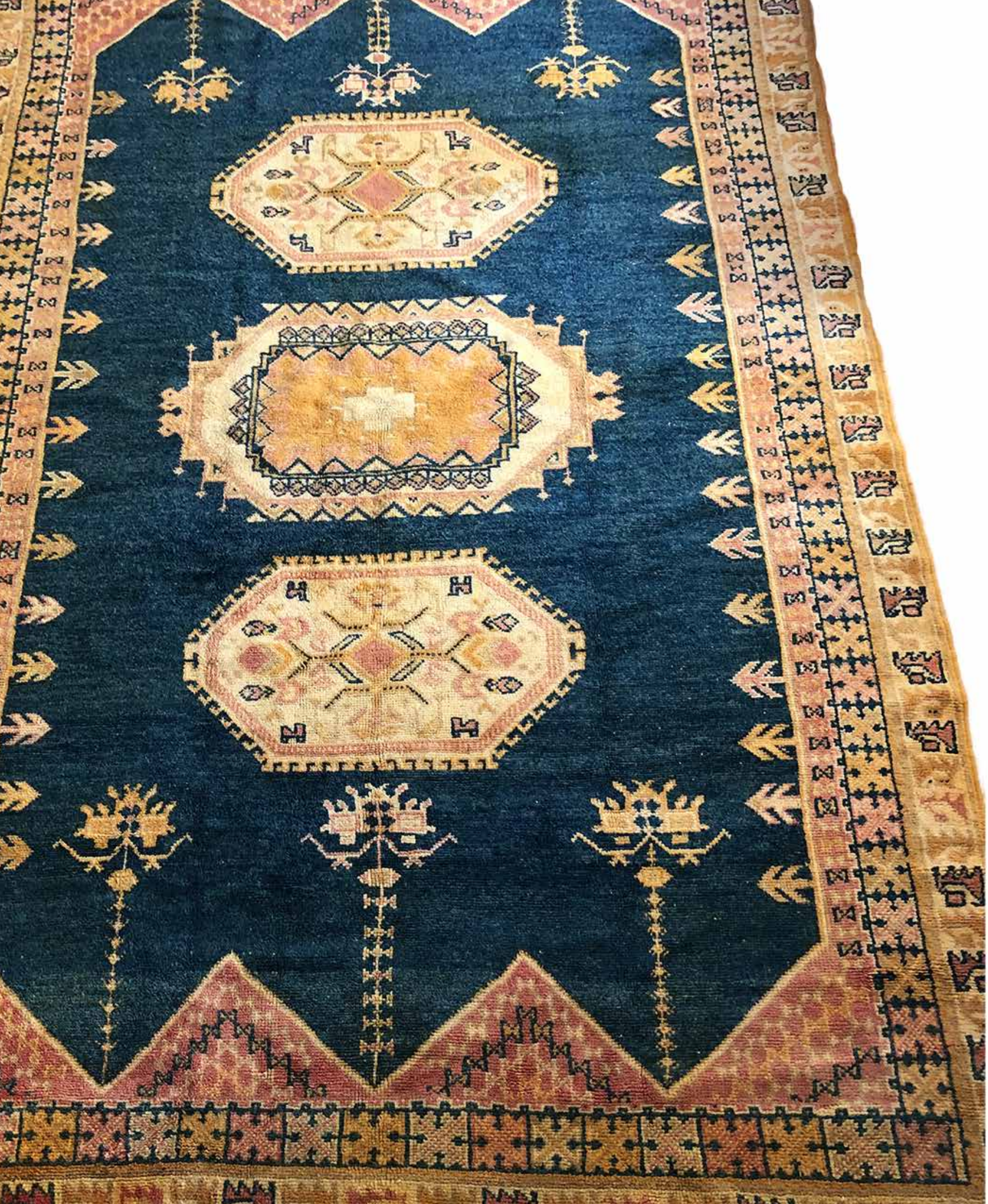
- HIGH ATLAS, LOW PILE
- AIT OUAOUZGUITTE RUGS





- VEGETABLE-DYED WOOL
- SHORT PILE, HIGH ATLAS RUGS









- SAMPLE AIT OUAOUZGUITTE RUG
- LOW PILE, HIGH ATLAS





- 51.34% 51.34% STYLE RUG
- MIXED PILE AND FLATWEAVE





- VEGETABLE-DYED WOOL
- SHORT PILE, HIGH ATLAS RUGS



# KANTARA

#

Name

Size 3,05 m / 0,91m

زربية 1



Notes >> 36" x 120" with 1" height of pile  
Fiber: Boucherouite in cotton thread







- SAMPLE AZILAL STYLE RUG DESIGN
- HIGH PILE, HAND KNOTTED

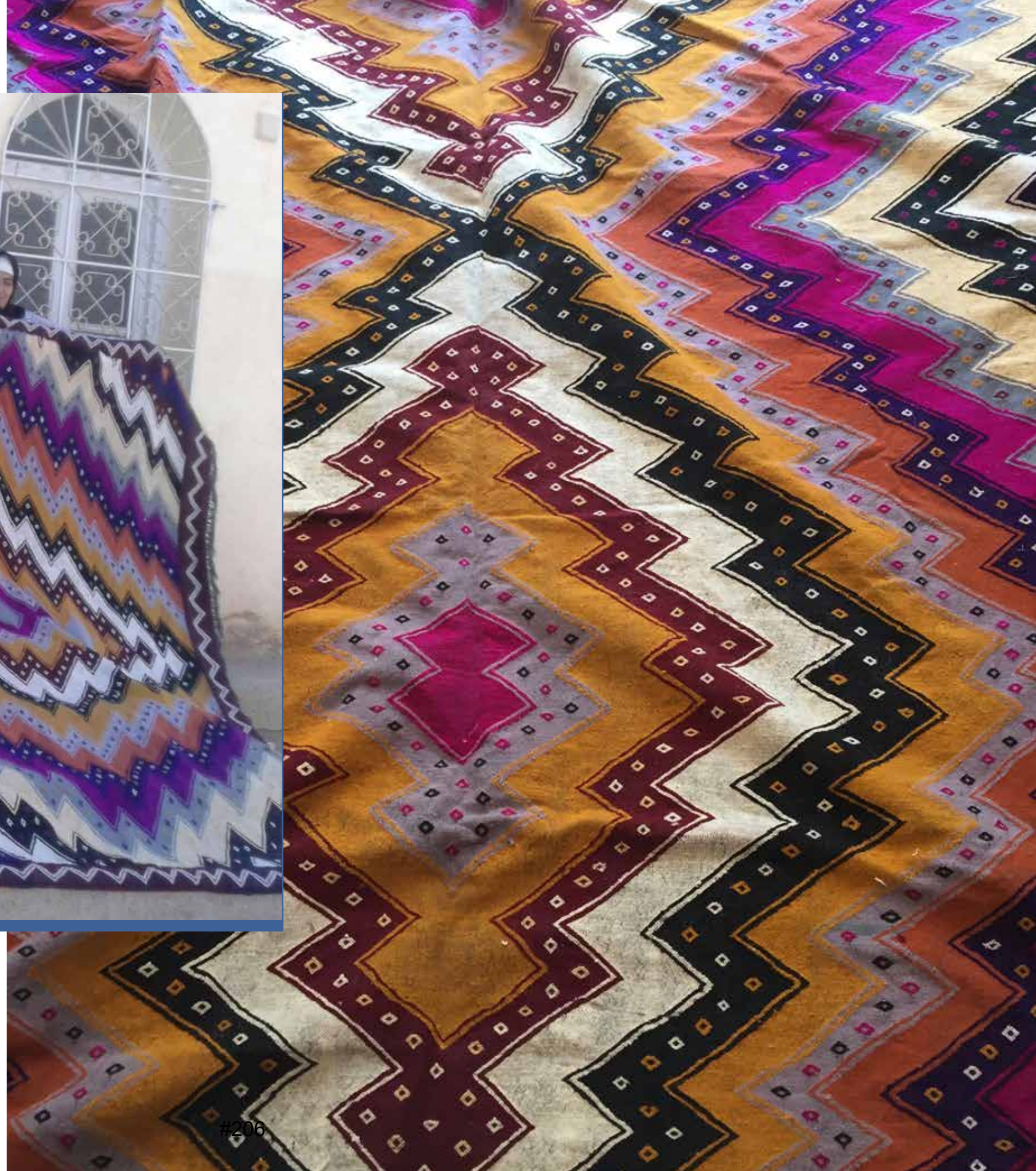










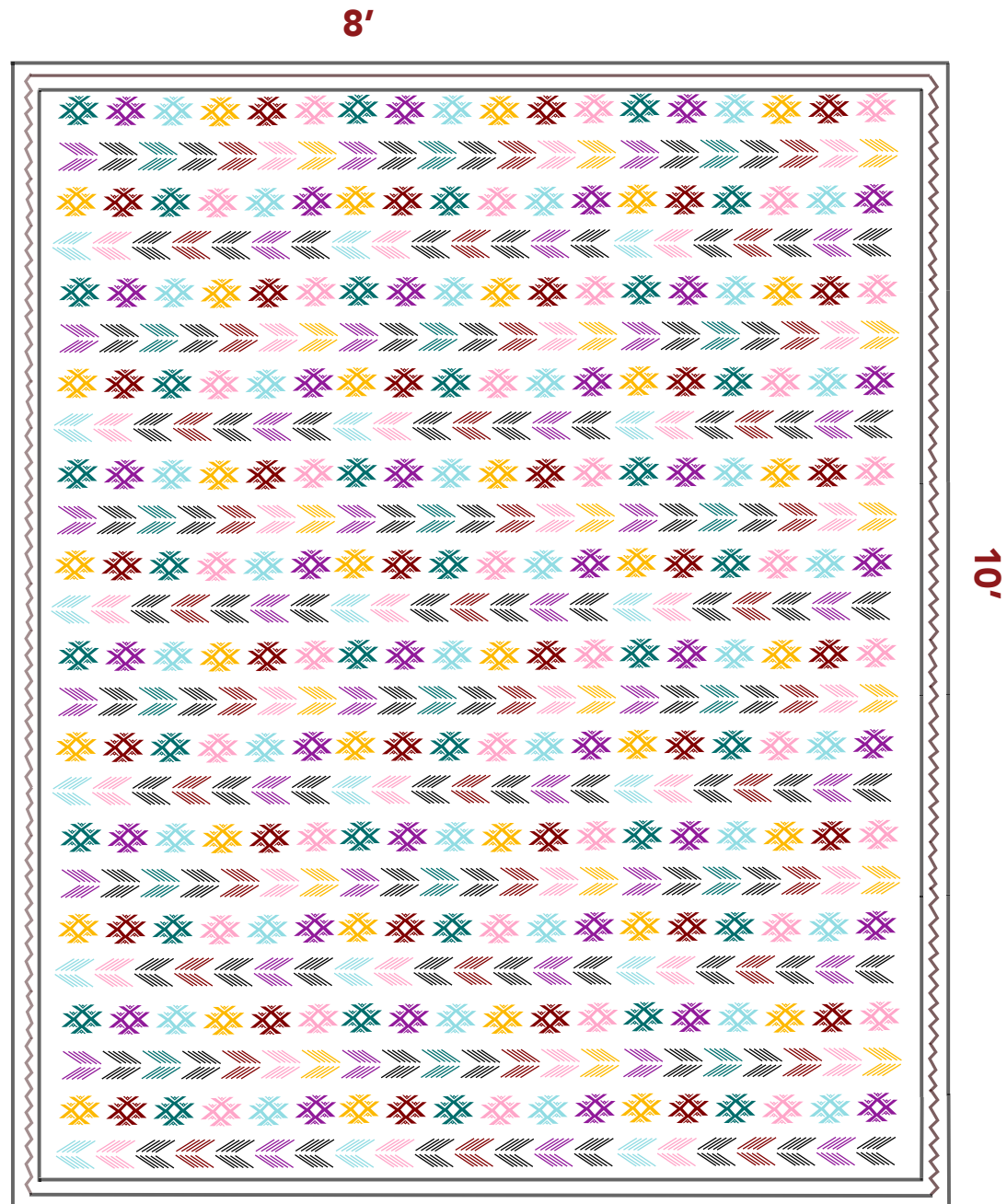




- FLATWEAVE KILIMS
- GEOMETRIC TIGHTLY WOVEN



# KANTARA

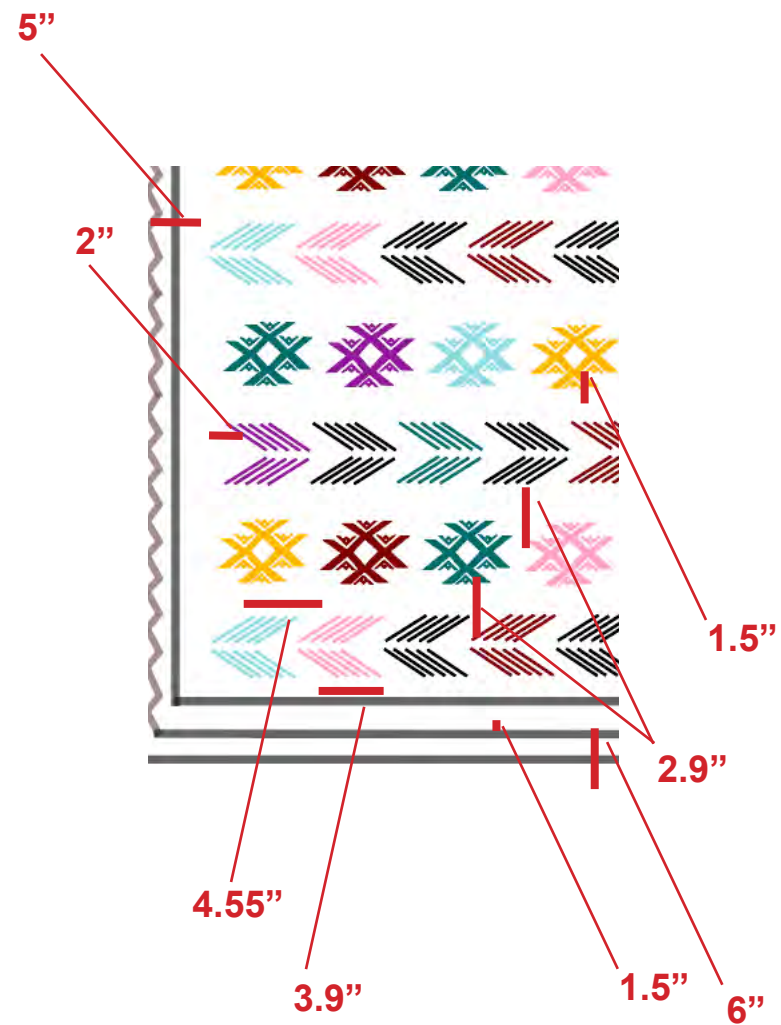
# >>  
Name >>  
Size >> 3,05cm / 2,44cm



Notes >>  21 designs across x 24 lines tall /  18 designs across  
6" for top and bottom border  
5" for L & R border of flatweave  
1.5" white flatweave padding between each design line











- BENI MGUILD, MIDDLE ATLAS RUGS
- GEOMETRIC TRIBAL DESIGN









• CUSTOMIZABLE COLOR, PATTERNS, BORDER STYLE, TESSELLATIONS













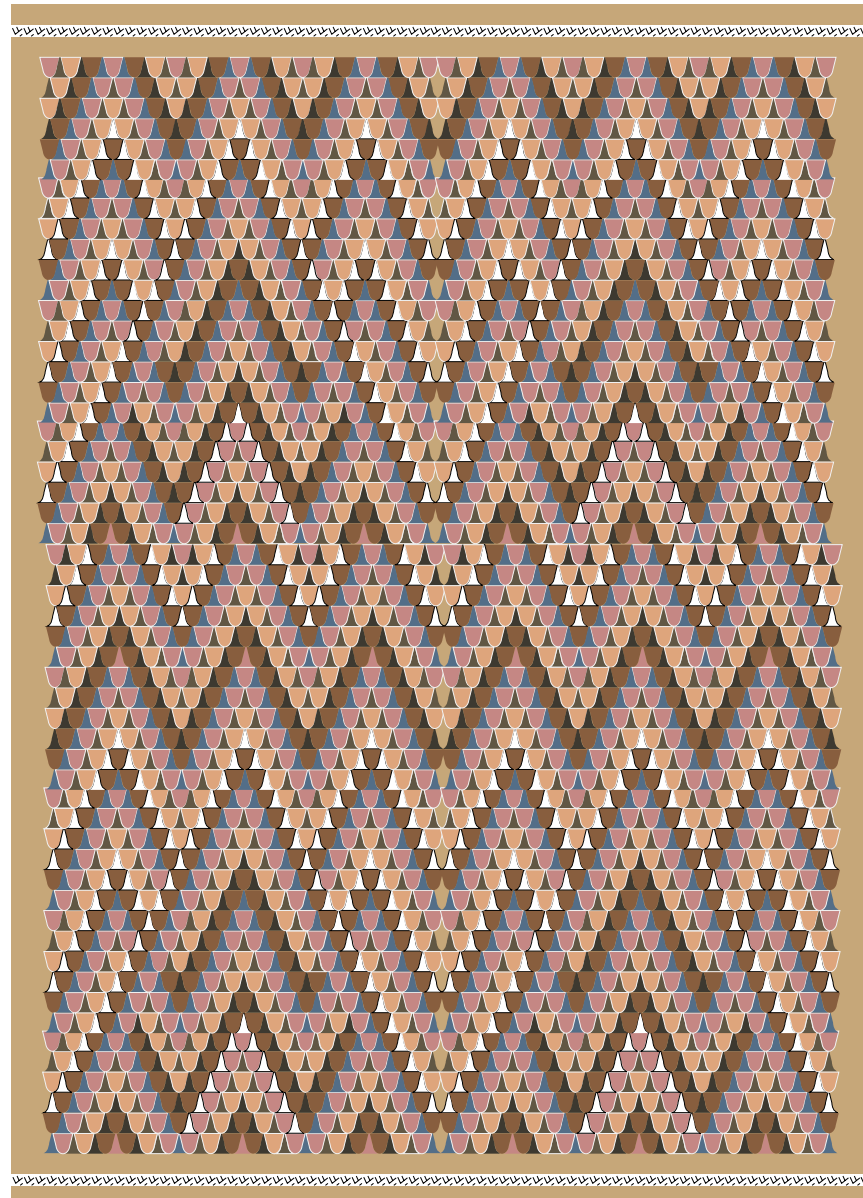
- KHARITA STYLE 'MAP' RUG
- FLATWEAVE KILIM, HIGH ATLAS



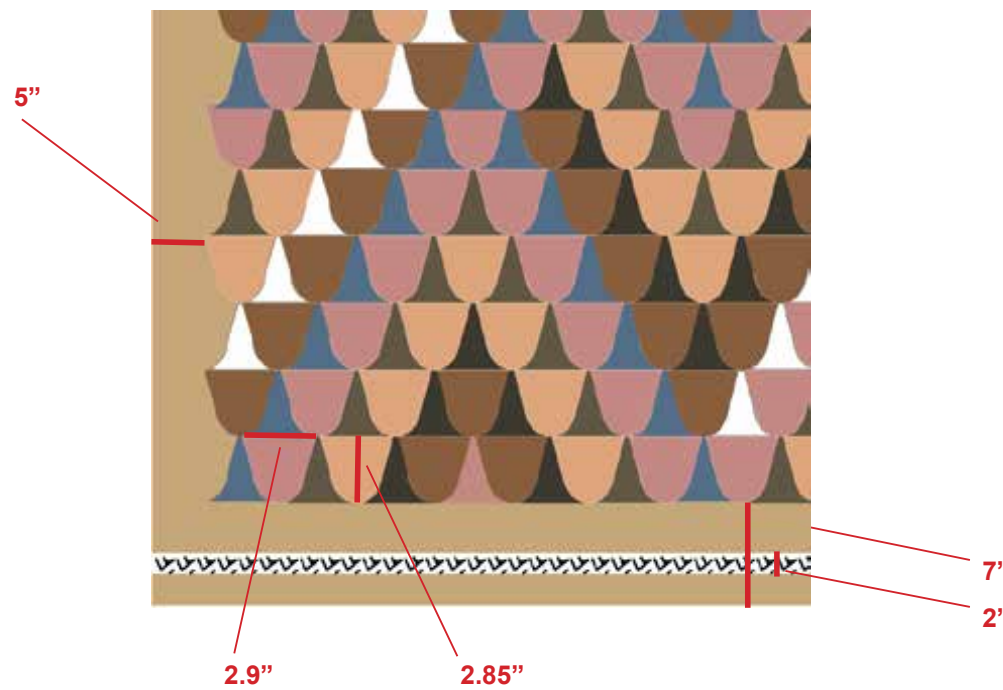
# KANTARA


# >>  
Name >>  
Size >> 3,05 m / 2,44 m

10'



14'



Notes >>  38 across x 54 tall  
7" for top and bottom border including 2" twining  
5" for L & R border of flatweave











• AKHANIF RUG WITH EMBROIDERY  
• FLATWEAVE KILIM, HIGH ATLAS





- BOUCHEROUITE RUG
- COTTON & SYNTHETIC FIBERS



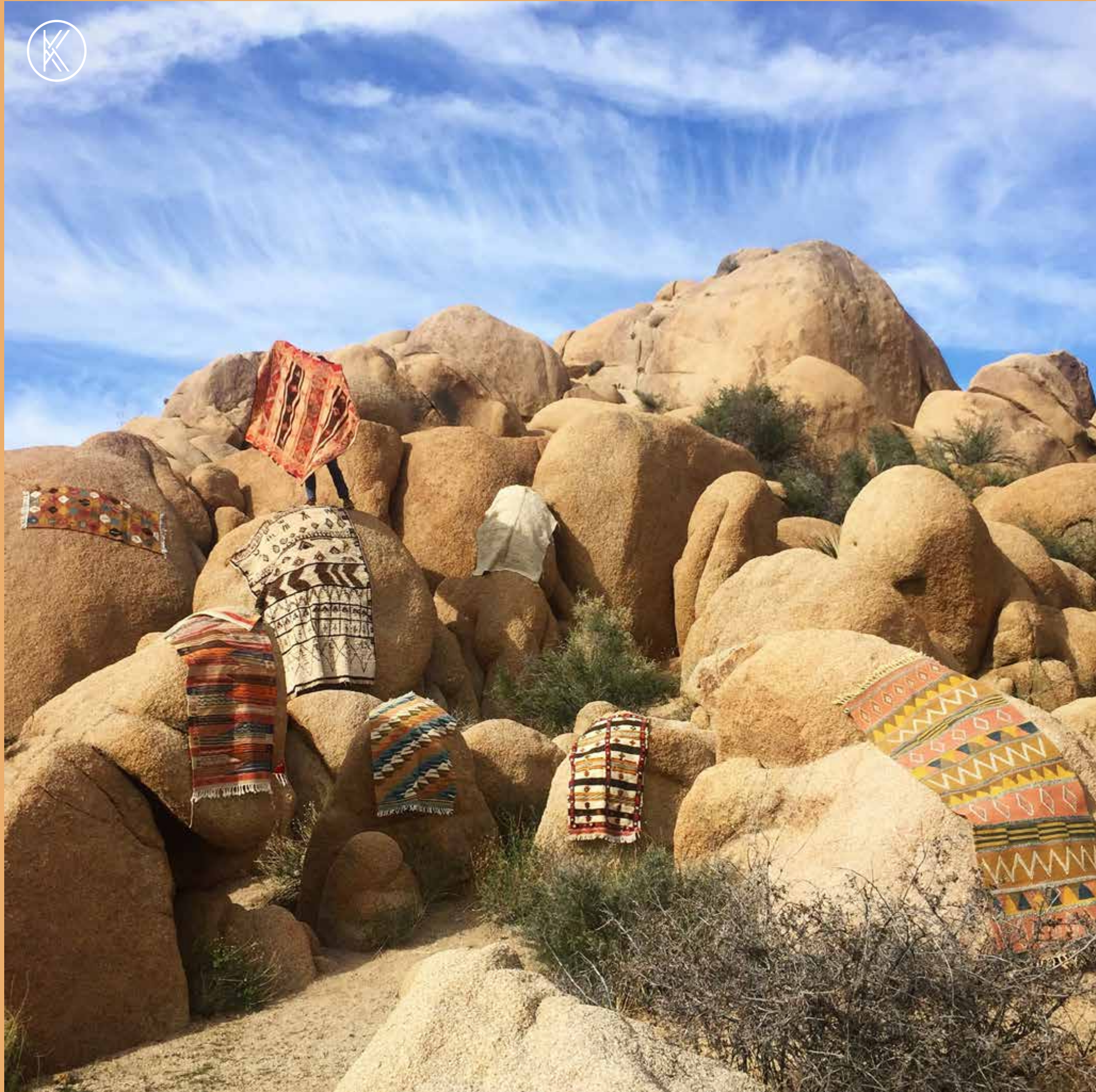






• SOME VINTAGE BOUCHEROUITES ARE MADE WITH RECYCLED FABRIC





## ABOUT KANTARA & ALIA

Alia Kate started Kantara after living in Morocco in 2006. For over a decade, Alia has worked directly with weaving cooperatives throughout Morocco.

Alia is committed to fostering the economic development of its artisan partners through Kantara's ethical trade & sustainable design.





Read more about Kantara:  
[bit.ly/AboutKantara](https://bit.ly/AboutKantara)

Reach out for a consult, to visit the LA showroom, or to learn more:  
[Alia@KantaraRugs.com](mailto:Alia@KantaraRugs.com)