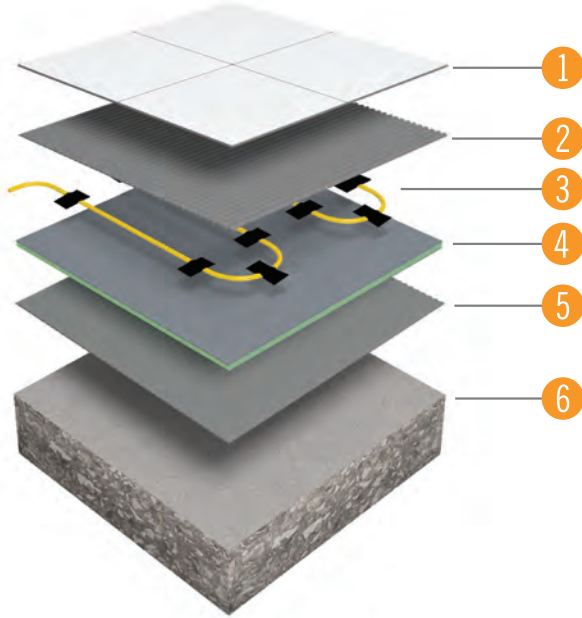


Thermowire Loose Wire Heating Cable

For installation in small, awkward areas



- 1 Tiled floor finish
- 2 Flexible tile adhesive
- 3 Thermowire System
- 4 Optional Econoboard Insulation Board
- 5 Flexible tile adhesive (if insulation is installed)
- 6 Prepared concrete or timber substrate



Lifetime Warranty

We are so confident in the quality of Thermowire Underfloor Heating that we give each system a warranty that lasts a Lifetime.



Made in Germany

Thermowire heating cables are manufactured in Germany, a nation renowned for quality and reliability.



Loose Wire Flexibility

Thermowire loose wire offers flexibility to fit around your room shape and fixtures and to adjust your cable spacing to achieve your desired heat output.



IP68 Protection Rating

IP68 Ingress Protection Rating. Safe for use in bathrooms, showers and other wet room locations without any electrical hazard.



Minimal Height Build-up

The cable system is only 3.5mm thick with a low profile 4mm cold tail which can be concealed within the tile adhesive layer.



Cloth tape for secure cable installation

3.5mm thick Twisted Twin Underfloor Heating cable

Technical Data

Thickness	3.5mm
Max. Temperature	28°C*
Protection Rating	IP68
Warranty	Lifetime
Conductor Type	Single Ended
Cold Tail Length	5m

* Regulated by floor sensing thermostat

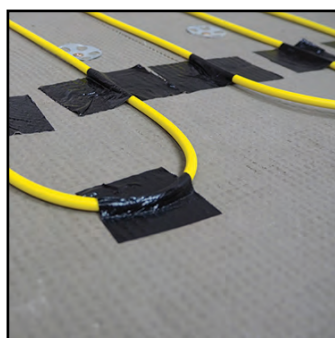
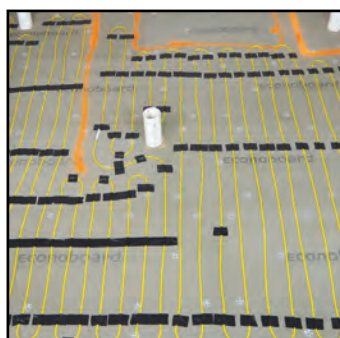
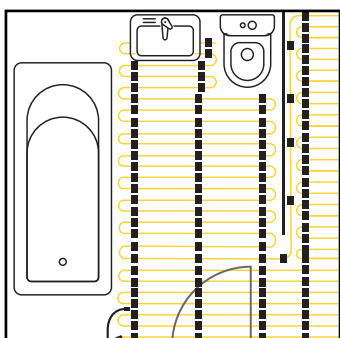
• IP68 Protection rating
Safe in wet locations

• 4mm Low profile cold tail
connection cable

Kit includes: Thermowire Heating Cable, Fixing Tape, Programmable Thermostat (5220A), Floor temperature sensor, Sensor conduit, Cable monitor, Installation Guide & Warranty Form.

Installation Overview

Thermowire Underfloor Heating cables are designed for installation in small, awkward areas. This overview gives a guide to the basics of the installation. Always read the instructions in full before attempting your own installation.



Plan out the installation

Determine the location of the thermostat and floor sensor, calculate the available floor space (excluding floor mounted fixtures) and calculate the required cable spacing. Check you have all the required components.

Layout Thermowire cable

Run the heating cable back and forth throughout the room using the spacing calculated and fix in position using the tape provided. **NEVER CUT THE YELLOW CABLE.**

Secure heating cables in place

Once all the cables are fixed into position go back and add additional strips of tape to ensure the cable is lying flat across the entire floor and the tape is tucked firmly around the heating cable with no air pockets.

Install floor finish

Take images of the installed cables before installing the floor finish. Cover the heating cables with a flexible cement based self-levelling or tile on top directly using a full bed of tile adhesive.

This is an illustrative guide only. Read the instruction manual that is supplied with the system in full before attempting installation.

How to calculate spacing of Thermowire

$$\frac{\text{Available floor space (m}^2\text{)} \times 100}{\text{Cable Kit Length (m)}} = \text{Cable Spacing (cm)}$$

Stock Code	Size (m)	Area (m ²)	Output (W)	Amps (A)
101502T	14	1.0 - 1.4	185	0.77
101503T	22	1.5 - 2.4	300	1.25
101504T	33	2.5 - 3.4	450	1.88
101506T	44	3.5 - 4.4	600	2.50
101508T	55	4.5 - 5.4	750	3.13
101510T	66	5.5 - 6.9	900	3.75
101512T	86	7.0 - 8.9	1200	5.00
101515T	110	9.0 - 10.9	1500	6.25
101518T	132	11.0 - 12.9	1800	7.50
101521T	154	13.0 - 14.9	2100	8.75
101524T	176	15.0 - 18.0	2400	10.00

Also available in Black 5226A Kit

*Based on approximately 150W/m² for installation below your tiles.