

**shadow**spec

umbrellas with distinction



## INTRODUCING A NEW CLASS OF SHADE

Curated shade for inspirational & dynamic spaces



Engineered and hand-built at the Heron Base, the Shadowspec Unity™ is our new flagship premium outdoor umbrella. We've created an umbrella that stands up to everyday use whilst being easy to use and quick to deploy.

## Introducing a New Class of Shade.

Shadowspec's collection of outdoor umbrellas provide class and style to outdoor settings no matter the location. With over 25 years' experience in research, development and manufacture of shade & protection products, Shadowspec has built an unparalleled product range with a reputation of real-world value - supplying world-leading designs with enduring quality.

Shadowspec outdoor umbrellas are constructed from marine-grade materials including stainless steel and single-extrusion aluminium. Our comprehensive range of stock and custom fabric colours provide exceptional UV sun protection, are water-repellant and colour-fast. Our elegant, effortless shade systems are here to help you sculpt your outdoor space into an iconic, warm and welcoming space.



Rotate your way to perfect shade with the exceptional design of the Shadowspec Serenity™. Our smart umbrella is designed to be adjustable and enduring. Lighten the load with Shadowlift technology and a built-in LED light.





## SHADOWSPEC UNITY™

### The Evolution of Shade. Innovative, modular and exclusive.

The Shadowspec Unity™ has been crafted with premium-grade aluminium and stainless steel to provide you with an umbrella that stands up and stands out.

Every component is designed and engineered to survive in the wild. Taking inspiration from nature, this flagship model is easy to open and looks stunning in any outdoor setting. It's an outdoor shade solution perfect for hospitality or home.

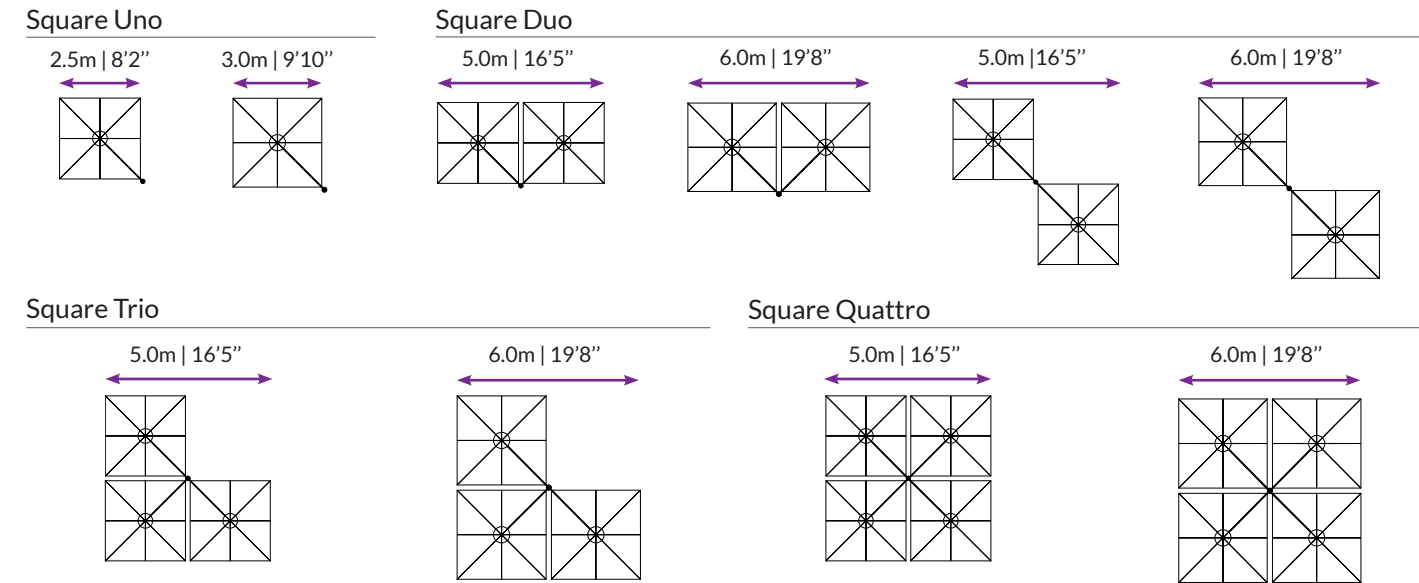
The Shadowspec Unity™ sits squarely (or octagonally) in a class of its own. You'll find no antiquated crank handles, cables or internal moving parts that create a laborious process and are prone to breakage.

You'll continue to be inspired by this brilliant, modern and modular outdoor shade umbrella. The needle-shifting features get better with every open and every new discovery of innovation you make.





Size & Configuration



PATENT-PENDING TECHNOLOGY

SHADOWLIFT™



Gas-assisted deployment for an easy lift.

SHADOWGLIDE™



Engineered to open or close in 3 seconds.

SHADOWHUB



LED light technology built-in and App controlled.

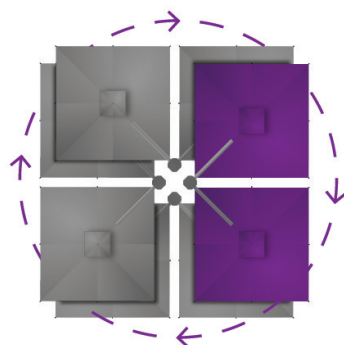
SHADOWLOCK™



Integrated security and wind-protection.



Featuring Marine-Grade 316 Stainless Steel Spigot



Rotates 360° (Ground Mounted)

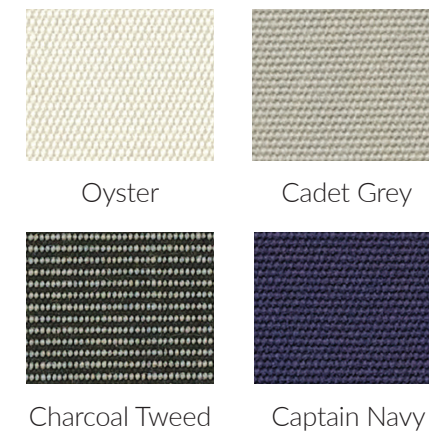
Canopy

Features

- 100% Sunbrella™ Marine solution-dyed fabric
- All fabrics can be cleaned, washed and are replaceable
- UV & Fade Resistant
- 10 year Sunbrella™ warranty
- Mold and Mildew Resistant
- Weight: 314 g/m2
- Sun protection - Skin Cancer Foundation's seal of approval



Stock Colors



Trend Colors - Summer 20/21\*



\*Trend colors are non-stock and lead times may vary for these colours. Full Sunbrella range is available as a custom color option.

BEST-IN-CLASS WARRANTY

Relax easy knowing your outdoor umbrella purchase is protected by the industries best warranty and customer support.



Fabric Warranty



Frame Warranty





SHADOWSPEC UNITY™

SHADOWSPEC UNITY™







## SHADOWSPEC SERENITY™

### Precision Engineered Ambience Effortless Protection for Prestigious Spaces.

The Shadowspec Serenity™ has been designed with careful consideration and consistency. The technology we've developed works in perfect harmony to give you the most advanced umbrella deployment system in the industry.

We're committed to evolving and innovating and our patent-pending technology is a prime example of that, giving you the ability to open or close the Serenity™ in just 3 seconds. The umbrella has been designed to be ready to go right out of the box; install it anywhere in your outdoor space and get the instant benefit of a rotatable shade solution.

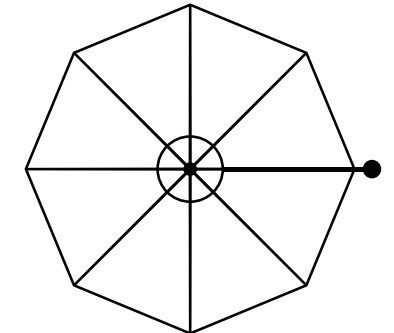
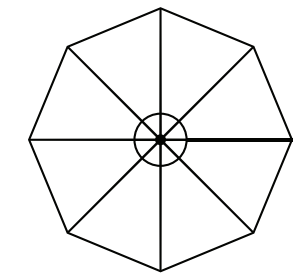
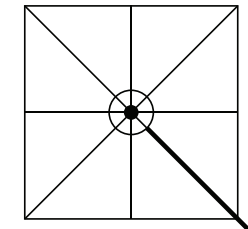
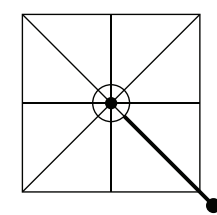




Size & Configuration

Square

Octagon



2.5m | 8'2"

3.0m | 9'10"

3.5m | 11'6"

4.0m | 13'2"

Canopy

Features

- 100% Sunbrella™ Marine solution-dyed fabric
- All fabrics can be cleaned, washed and are replaceable
- UV & Fade Resistant
- 10 year Sunbrella™ warranty
- Mold and Mildew Resistant
- Weight: 314 g/m2
- Sun protection - Skin Cancer Foundation's seal of approval



Stock Colors

Trend Colors - Summer 20/21\*



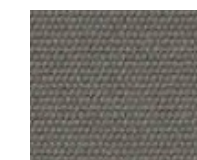
Oyster



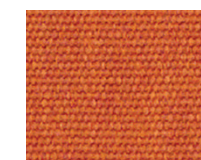
Cadet Grey



Natural



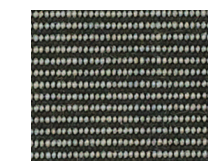
Charcoal Grey



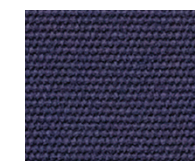
Rust



Silver



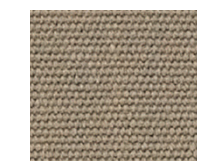
Charcoal Tweed



Captain Navy



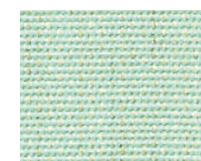
Black



Taupe



Linen



Sea

\*Trend colors are non-stock and lead times may vary for these colours. Full Sunbrella range is available as a custom color option.

PATENT-PENDING TECHNOLOGY

SHADOWLIFT™



Gas-assisted deployment for an easy lift.

SHADOWGLIDE™



Engineered to open or close in 3 seconds.

SHADOWHUB™



LED light technology built-in and App controlled.

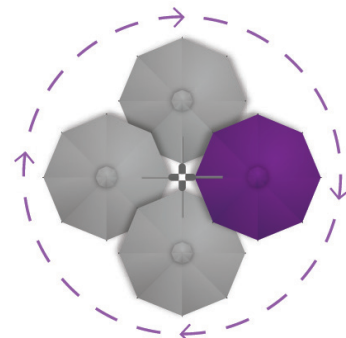
SHADOWLOCK™



Integrated security and wind-protection.



Featuring Marine-Grade 316 Stainless Steel Spigot



Rotates 360° (Ground Mounted)

BEST-IN-CLASS WARRANTY

Relax easy knowing your outdoor umbrella purchase is protected by the industries best warranty and customer support.



Fabric Warranty



Frame Warranty



SHADOWSPEC SERENITY™





# UMBRELLA FIXINGS

## Mounting options for any spaces

Style and finish may vary across models

### Surface Plate

For deck, patio and concrete mounting.



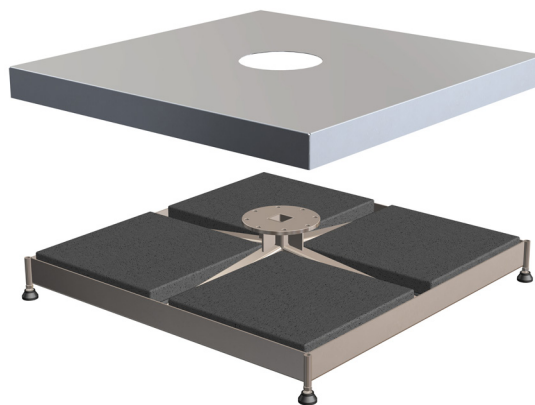
### In-Ground Anchor

For mounting with a concrete footing.



### Free-Standing Base

For complete customised maneuverability.



Concrete Pavers are required for ballast (not supplied).  
Caster Wheels optional.



**shadow**spec  
umbrellas with distinction