

Industrial Grade

G2 SERIES PRECISION TURBINE FLOW METERS

A full line of **FLOMEC® G2 Series Precision Turbine Meters** are available in a variety of housing materials. The rugged and dependable G2 offers:

- **Stainless Steel** - for most chemicals and fuel products.
- **Aluminium** - for petroleum based products.
- **Brass** - for most water applications.
- **PVDF** - for aggressive chemicals.



FEATURES / BENEFITS:

- Meter is designed for thin fluids < 100 cp.
- Modular design allows for use with Output Modules, Sensors and Remote Transmitters.
- 2 Totals (Batch = Resettable, Cumulative = Non-resettable); Rate of Flow, Factory calibrated in gallons and litres. Field calibratable. Includes non-volatile totals.
- High accuracy meter.
- Internal parts are simple to replace for easy maintenance.
- Lithium battery life: 5 years.

PRODUCT CONFIGURATION:

PRODUCT IDENTIFIER **1**

G2 = Industrial Grade Flowmeter

TURBINE MATERIAL **2**

S = Stainless Steel
A = Aluminium
P = PVDF (1/2" & 1" only)
H = High Pressure Stainless Steel
B = Brass

TURBINE SIZE **3**

05 = 1/2 inch
07 = 3/4 inch
10 = 1 inch
15 = 1-1/2 inch
20 = 2 inch

FITTING TYPE **4**

I = ISO (Female) BSPT (ISO 7 Designation is RC)
N = NPT (Female)
F = 150# ANSI Flange - available on S10, S15 and S20 only
T = Tri-Clover® fitting - available on S05-S20 only
X = Electronics only - for metal meters
Z = Electronics only - for plastic meters

ELECTRONIC CHOICE **5**

Local Computer w/Display, Meter Mounted

Q9 = Q9 2-Button Computer.

Q1 = Q9 2-Button Computer, Vertical Mount (90° Adapter).

*Local Computer w/Display & Module, Meter Mounted**

P9 = Q9 2-Button Computer w/Pulse Out Module, includes External Power and 10 ft. of Cable.

42 = Q9 2-Button Computer w/4-20mA Module and 10 ft. of Cable. *Module, Meter Mounted (No Display)**

PO = Pulse Out (Unscaled) Conditioned Signal Module w/Cable.

*QSI Options, Meter Mounted (No Display)**

81 = QSI Version 1 (Scales Pulse, RS485 [Modbus or BACnet], BTU Calculator, Bluetooth®).

82 = QSI Version 2 (Scales Pulse, BTU Calculator, Bluetooth®).

83 = QSI Version 3 (Scales Pulse, 4-20 mA, Bluetooth®).

Retrofit Computer Kit (Display Only)

R9 = Q9 2-Button Computer Retrofit Kit (Replaces Q9 Display).

No Electronics - Turbine Only

XX = No Electronics - Turbine Only.

CALIBRATION OF COMPUTER / DISPLAY **6**

GM = Gallons Per Minute (Gallons Default)

LM = Liters Per Minute (Litres Default)

XX = No Calibration.

PACKAGING **7**

A = 05 Thru 10 Turbines, Turbine Only or w/Q9 Electronics. 05 Thru 20 Electronics Only (Q9 Replacement Kit or R9 Retrofit Kit).

B = 15 & 20 Turbines, Turbine Only or w/Q9 Electronics. 05 Thru 10 Turbines w/Q1 Electronics.

C = 15 Thru 20 Turbine w/Q1 Electronics. 05 Thru 20 Turbines w/P9, 42, PO, 81, 82, 83 Electronics.

D = 10 Turbines with ANSI Flange Turbine Only or w/Q9, Q1, P9, 42, PO Electronics.

E = 15 & 20 Turbines with ANSI Flange Turbine Only or w/Q9, Q1, P9, 42, PO Electronics. 10 Turbines with ANSI Flange w/81, 82, & 83 Electronics.

F = 05 Thru 20 Turbines w/81, 82, & 83 Electronics.

G = 15 & 20 Turbines with ANSI Flange w/81, 82, & 83 Electronics.

How to Order: **1 2 3 4 5 6 7**
G2 S 15 N Q9 GM B

SPECIFICATIONS:

Fitting Type:	NPT or ISO (Female) BSPT* (*ISO 7 designation is RC)		Operating Temperature Range:	-40° F to 250° F (-40° C to 121° C)		
	150# ANSI (Stainless Steel only)			(PVDF) -20° F to 180° F (-28° C to 82° C)		
	Tri-Clover® (Stainless Steel only) - Clamp size is one size bigger than meter size			with Display: 14° F to 140° F (-10° C to 60° C)		
Housing Material:	316 Stainless Steel, Aluminum, Brass, PVDF		Typical K-Factor:	1/2" (05)	2,500 PPG (660 Pulses/L)	
Meter Sizes Available:	1/2" 3/4" 1" 1-1/2" 2"			3/4" (07)	1,100 PPG (291 Pulses/L)	
Flow Range:	1/2" (05)	1 - 10 GPM (3.8 - 38 L/min)		1" (10)	565 PPG (149 Pulses/L)	
	1/2" (05) PVDF only	1.2 - 12 GPM (4.5 - 45 L/min)		1-1/2" (15)	215 PPG (57 Pulses/L)	
	3/4" (07)	2 - 20 GPM (7.6 - 76 L/min)		2" (20)	100 PPG (26 Pulses/L)	
	1" (10)	5 - 50 GPM (19 - 190 L/min)	Wetted Materials:	Housing:	316 Stainless Steel, Aluminum or Brass	
	1-1/2" (15)	10 - 100 GPM (38 - 380 L/min)		Bearings:	96% Alumina Ceramic	
2" (20)	20 - 200 GPM (76 - 760 L/min)		Shaft:	Tungsten Carbide		
Accuracy (% of Reading):	Turbine Only	Turbine w/Computer	Rotor:	PVDF		
	1/2" (05)	± 2.0%	± 1.5%	Rings:	316 Stainless Steel	
	3/4" (07)	± 1.5%	± 1.0%	Wetted Materials PVDF:	Housing:	PVDF (15% Carbon Fiber Filled)
	1" (10)	± 1.5%	± 1.0%		Bearings & Shaft:	98% Alumina Ceramic
	1-1/2" (15)	± 1.0%	± 0.75%		Rotor:	PVDF
	2" (20)	± 1.0%	± 0.75%	Rings:	Fluorocarbon (Optional PTFE)	
Repeatability:	± 0.1% (PVDF is ± 0.3%)		Frequency Range:	1/2" (05)	42-420 Hz @ 1-10 GPM (3.8-38 L/min) / 48-480 Hz @ 1.2-12 GPM (4.5-45 L/min) (PVDF)	
Pressure Rating:				3/4" (07)	37-370 Hz @ 2-20 GPM (7.6-76 L/min)	
316 Stainless Steel	1,500 psi (102 bar)			1" (10)	47-470 Hz @ 5-50 GPM (19-190 L/min) / 45-450 Hz @ 5-50 GPM (19-190 L/min) (PVDF)	
Aluminum	300 psi (21 bar)			1-1/2" (15)	36-360 Hz @ 10-100 GPM (38-380 L/min)	
Brass	300 psi (21 bar)			2" (20)	33-330 Hz @ 20-200 GPM (76-760 L/min)	
High Pressure 316 Stainless Steel	3000 psi (207 bar) (CE Approval ONLY)		Calibration Report:	Comes standard with G2 Series meters.		
ANSI Flange 316 Stainless Steel	Flange Rule			N.I.S.T. – Certification available.		
Sanitary Flange 316 Stainless Steel	Limited by fitting size, clamp size & temperature					
PVDF	100 psi (6.9 bar)					

DIMENSIONS: NOTE: Q9 Display adds 0.72 in. (18mm) to height.

Stainless Steel (SS) and SS High Pressure Models

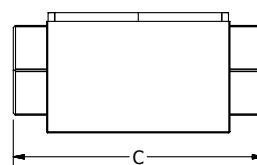
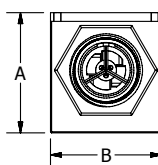
	S05 & H05 ½ in.	S07 & H07 ¾ in.	S10 & H10 1 in.	S15 & H15 1½ in.	S20 & H20 2 in.
A = Height	1.4 in. (35.6mm)	1.6 in. (40.6mm)	1.9 in. (48.3mm)	2.6 in. (66.0mm)	3.1 in. (78.7mm)
B = Width	2.0 in. (50.8mm)	2.0 in. (50.8mm)	2.0 in. (50.8mm)	2.7 in. (68.6mm)	3.4 in. (86.4mm)
C = Length	4.2 in. (106.7mm)	4.3 in. (109.2mm)	4.5 in. (114.3mm)	5.3 in. (134.6mm)	6.3 in. (160.0mm)

Aluminum Models

	A05, ½ in.	A07, ¾ in.	A10, 1 in.	A15, 1½ in.	A20, 2 in.
A = Height	1.8 in. (45.7mm)	2.0 in. (50.8mm)	2.2 in. (55.9mm)	2.8 in. (71.1mm)	3.2 in. (81.3mm)
B = Width	2.0 in. (50.8mm)	2.0 in. (50.8mm)	2.0 in. (50.8mm)	2.7 in. (68.6mm)	3.3 in. (83.8mm)
C = Length	4.2 in. (106.7mm)	4.3 in. (109.2mm)	4.5 in. (114.3mm)	5.3 in. (134.6mm)	6.3 in. (160.0mm)

PVDF Models

	A05, ½ in.	A07, ¾ in.
A = Height	3.2 in. (81.3mm)	3.3 in. (83.8mm)
B = Width	2.1 in. (53.3mm)	2.8 in. (71.1mm)
C = Length	7.3 in. (185.4mm)	8.1 in. (205.7mm)



NOTE: For representation purpose only. Actual product models vary in shape, design, etc. ANSI Flange and Sanitary Flange dimensions not shown.

APPLICATIONS:

- Batching
- Blending
- Water
- Industrial Fluids
- Plating Solutions
- Ammonium
- Food & Beverage Processing
- Fuel Products
- Monitoring Clean Fluids
- Plant Process Water
- Chemical Feed Lines
- Harsh Chemicals (Sulfuric Acid & Bleach)

APPROVALS:



ACCESSORIES / ELECTRONICS:

Part No.	Description
113435-10	Conditioned Signal Module
125060-10	Pulse Out, Extended Power, Scaled Pulse Module
125070-1	External Power Module
125100-10	4-20 mA Module
120077-01	FM Approved Sensor
120077-02	ATEX Approved Sensor
125260-02	90 Degree Display Adaptor Kit
125260-2	½ in. Teflon O-Rings (2)
125260-1	1 in. Teflon O-Rings (2)
113275-10	FM Approved Remote Kit
145505-01	Kit, Adapter, G2-QSI1-Q09 Display
145505-02	Kit, Adapter, G2-QSI2-Q09 Display
145505-03	Kit, Adapter, G2-QSI3-Q09 Display
145505-04	Kit, Adapter, G2-QSI1-No Display
145505-05	Kit, Adapter, G2-QSI2-No Display
145505-06	Kit, Adapter, G2-QSI3-No Display
145505-07	Kit, Adapter, G2-QSI1-Display Ready
145505-08	Kit, Adapter, G2-QSI2-Display Ready
145505-09	Kit, Adapter, G2-QSI3-Display Ready