

SPiN | Catalog



SPIN

SPIN's persistent exploration into the integration of form, function and technology reinvigorate its compelling drive to create ceiling fans of exquisite craftsmanship. A timeless addition to any space, SPIN is the quintessence of both class and luxury.

Established in 2008, the brand has redefined the concept of ceiling fans. Putting together aesthetics and functionality in every product designed by the brand. Embodiment of perfection is the only constant for SPIN.

The brand has developed three product lines since its humble inception - the **SIGNATURES**, **TIMBER** and **ONIX** series.

Each series boasts their own unique aesthetics and functions, giving SPIN the versatility to be used in different settings while keeping a minimalist design that fits in seamlessly.



DISCOVER THE **SPIN** EXPERIENCE

SPIN's dedication to perfection not only lies in the craft of ceiling fans, but also in its insatiable desire to create a holistic user experience and unparalleled level of service quality. An unequalled class with the distinct ability of conformance to the user and its surroundings.

PRECISION

Constant innovation has empowered SPIN to utilise the resilience and durability of the single ply Acrylonitrile-Butadiene-Styrene (ABS) acrylic material in the air foils of our **SIGNATURES** series.

The blades in the **ONIX** series are designed with Korean technology engineering, resulting in a perfect blend of technology, precision and quality.

All airfoils are also engineered with a calculated angle for optimal wind delivery and best performance.

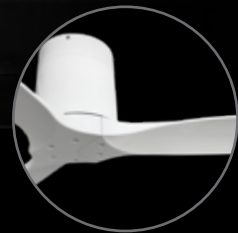
DYNAMIC

SPIN developed the Ultra Dynamic Direct Current (UDDC™) motor for its SIGNATURES series, with the notion to conceive a ceiling fan motor which surpasses the typical Alternating Current (AC) motor used in most ceiling fans.

With its foray into large format fans (up to 84inches diameter) the team developed a larger capacity motor - Heavy Dynamic Direct Current (HDDC) motor. This motor serves as the driving force behind the ONIX series.

SPIN's DC motors are energy efficient while maintaining optimal performance.

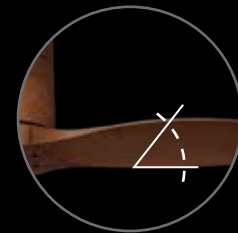
SPIN | INNOVATION



Resilient ABS material



Korean technology engineered blades (ONIX)



Angled airfoils for optimal windflow

SPIN | INNOVATION



Consumes up to 70% less energy



Nearly zero humming noise



Low electromagnetic interference

SOPHISTICATION

SPIN believes that simplicity is the key to sophistication, resulting in a modern silhouette in the **SIGNATURES** series. Accompanied by a palette of timeless colours to infuse interiors with style and elegance.

Designed with a hugger unit installation unique to SPIN, the fans are capable of fitting lower ceilings and yet extending the option of extension rods for homes with a higher ceiling.

The **TIMBER** series exudes a rustic charm and exquisite wood grain finishing that says perfect sophistication for any home.

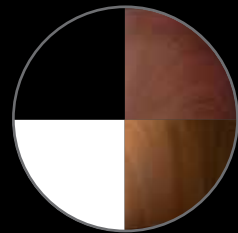
NATURAL

SPIN fans are equipped with a **Natural Wind** mode which allows the fan to vary its speed automatically to simulate a natural breeze, giving your home or any space a natural ventilation.

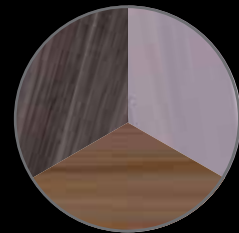
The quiet motor brings a natural calm for you and your loved ones, ensuring uninterrupted rest, especially the little ones.

The **TIMBER** series features exquisite handcrafted natural wooden blades as well, available in three options - Ash, Oak and Off White wood grains. It is the perfect choice for any scandinavian themed homes.

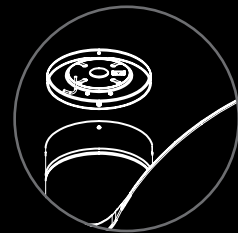
SPIN | INNOVATION



Luxurious finish and colours (SIGNATURES)



Rustic and exquisite natural wood (TIMBER)



Elegant and flexible installation

SPIN | INNOVATION



Natural wooden blades



Natural wind mode function (N Mode)



SIMPLY ESPADA

The black knight of the series - ESPADA. A touch of flair and stylishness for any home in need of a vivid luxurious black addition to their space.





ESPADA 60



ESPADA 52



ESPADA 43

MODEL		ESPADA 60	ESPADA 52	ESPADA 43
BUILD	DIAMETER	60 inch (152.4cm)	52 inch (132.1cm)	43 inch (109.3cm)
	MOTOR	UDDC™ motor	UDDC™ motor	UDDC™ motor
	WEIGHT	7kg	6.5kg	6kg
	MATERIAL	ABS	ABS	ABS
PERFORMANCE	COLOUR	Matt Black	Matt Black	Matt Black
	VOLTAGE	240V / 50Hz	240V / 50Hz	240V / 50Hz
	WATTAGE (WITHOUT LED)	4W - 38W	4W - 42W	7W - 40W
	RPM (MIN/MAX)	60 / 165 RPM	63 / 200 RPM	130 / 266 RPM
	CFM	8138 ft ³ /m	7724 ft ³ /m	6172 ft ³ /m

PERFECT QUINCY

The QUINCY is an elegant statement piece with its bold pearl white finish, the perfect addition to modern havens.





QUINCY 60



QUINCY 52



QUINCY 43

MODEL		QUINCY 60	QUINCY 52	QUINCY 43
BUILD	DIAMETER	60 inch (152.4cm)	52 inch (132.1cm)	43 inch (109.3cm)
	MOTOR	UDDC™ motor	UDDC™ motor	UDDC™ motor
	WEIGHT	7kg	6.5kg	6kg
	MATERIAL	ABS	ABS	ABS
	COLOUR	Pearl White	Pearl White	Pearl White
PERFORMANCE	VOLTAGE	240V / 50Hz	240V / 50Hz	240V / 50Hz
	WATTAGE (WITHOUT LED)	4W - 38W	4W - 42W	7W - 40W
	RPM (MIN/MAX)	60 / 165 RPM	63 / 200 RPM	130 / 266 RPM
	CFM	8138 ft³/m	7724 ft³/m	6172 ft³/m

RUSTIC SAVANNAH

SAVANNAH is the ideal choice for homes designed with a rustic touch of timber. An element of impeccable walnut grain veneer to the interior.





SAVANNAH 60



SAVANNAH 52



SAVANNAH 43

MODEL		SAVANNAH 60	SAVANNAH 52	SAVANNAH 43
BUILD	DIAMETER	60 inch (152.4cm)	52 inch (132.1cm)	43 inch (109.3cm)
	MOTOR	UDDC™ motor	UDDC™ motor	UDDC™ motor
	WEIGHT	7kg	6.5kg	6kg
	MATERIAL	ABS	ABS	ABS
PERFORMANCE	COLOUR	Walnut Grain	Walnut Grain	Walnut Grain
	VOLTAGE	240V / 50Hz	240V / 50Hz	240V / 50Hz
	WATTAGE (WITHOUT LED)	4W - 38W	4W - 42W	7W - 40W
	RPM (MIN/MAX)	60 / 165 RPM	63 / 200 RPM	130 / 266 RPM
	CFM	8138 ft³/m	7724 ft³/m	6172 ft³/m

SWEET CARMEL

If Japanese wood is your choice colour or theme, our CARMEL is the perfect choice. This lighter wood suits almost every theme easily with its versatile shade.





CARMEL 60



CARMEL 52



CARMEL 43

MODEL		CARMEL 60	CARMEL 52	CARMEL 43
BUILD	DIAMETER	60 inch (152.4cm)	52 inch (132.1cm)	43 inch (109.3cm)
	MOTOR	UDDC™ motor	UDDC™ motor	UDDC™ motor
	WEIGHT	7kg	6.5kg	6kg
	MATERIAL	ABS	ABS	ABS
PERFORMANCE	COLOUR	Natural Grain	Natural Grain	Natural Grain
	VOLTAGE	240V / 50Hz	240V / 50Hz	240V / 50Hz
	WATTAGE (WITHOUT LED)	4W - 38W	4W - 42W	7W - 40W
	RPM (MIN/MAX)	60 / 165 RPM	63 / 200 RPM	130 / 266 RPM
	CFM	8138 ft³/m	7724 ft³/m	6172 ft³/m

TIMBER x ESPADA

This TIMBER series is paired with the ESPADA body, giving the luxurious black an additional scandinavian flair and rustic touch. Explore the three natural wood blades paired with this dark option.





ESPADA X ASH 60



ESPADA X ASH 52

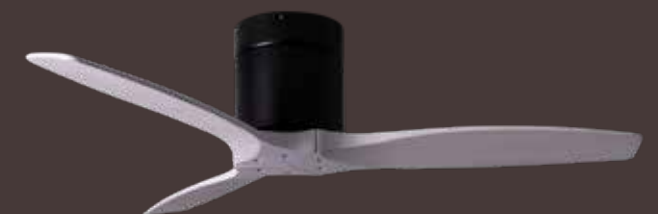


ESPADA X ASH 43

MODEL		ESPADA X ASH 60	ESPADA X ASH 52	ESPADA X ASH 43
BUILD	DIAMETER	60 inch (152.4cm)	52 inch (132.1cm)	43 inch (109.3cm)
	MOTOR	UDDC™ motor	UDDC™ motor	UDDC™ motor
	WEIGHT	7kg	6.5kg	6kg
	MATERIAL	Natural Wooden Blades	Natural Wooden Blades	Natural Wooden Blades
	COLOUR	Matt Black (Body) , Ash Wood (Blades)	Matt Black (Body) , Ash Wood (Blades)	Matt Black (Body) , Ash Wood (Blades)
PERFORMANCE	VOLTAGE	240V / 50Hz	240V / 50Hz	240V / 50Hz
	WATTAGE (WITHOUT LED)	4W - 38W	4W - 42W	7W - 40W
	RPM (MIN/MAX)	60 / 165 RPM	63 / 200 RPM	130 / 266 RPM
	CFM	8138 ft³/m	7724 ft³/m	6172 ft³/m



MODEL		ESPADA X OAK 60	ESPADA X OAK 52	ESPADA X OAK 43
BUILD	DIAMETER	60 inch (152.4cm)	52 inch (132.1cm)	43 inch (109.3cm)
	MOTOR	UDDC™ motor	UDDC™ motor	UDDC™ motor
	WEIGHT	7kg	6.5kg	6kg
	MATERIAL	Natural Wooden Blades	Natural Wooden Blades	Natural Wooden Blades
	COLOUR	Matt Black (Body) , Oak Wood (Blades)	Matt Black (Body) , Oak Wood (Blades)	Matt Black (Body) , Oak Wood (Blades)
PERFORMANCE	VOLTAGE	240V / 50Hz	240V / 50Hz	240V / 50Hz
	WATTAGE (WITHOUT LED)	4W - 38W	4W - 42W	7W - 40W
	RPM (MIN/MAX)	60 / 165 RPM	63 / 200 RPM	130 / 266 RPM
	CFM	8138 ft³/m	7724 ft³/m	6172 ft³/m

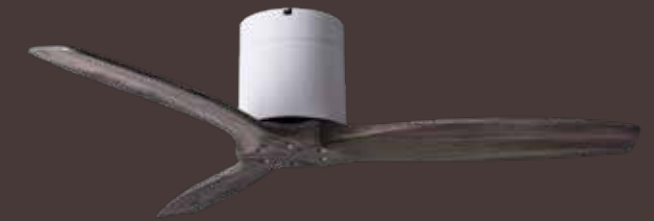


MODEL	ESPADA X OFFWHITE 60		ESPADA X OFFWHITE 52		ESPADA X OFFWHITE 43		
BUILD	DIAMETER	60 inch (152.4cm)	52 inch (132.1cm)	52 inch (132.1cm)	43 inch (109.3cm)	43 inch (109.3cm)	
	MOTOR	UDDC™ motor	UDDC™ motor	UDDC™ motor	UDDC™ motor	UDDC™ motor	
	WEIGHT	7kg	6.5kg	6.5kg	6kg	6kg	
	MATERIAL	Natural Wooden Blades	Natural Wooden Blades	Natural Wooden Blades	Natural Wooden Blades	Natural Wooden Blades	
PERFORMANCE	COLOUR	Matt Black (Body) , Off White Wood (Blades)		Matt Black (Body) , Off White Wood (Blades)		Matt Black (Body) , Off White Wood (Blades)	
	VOLTAGE	240V / 50Hz		240V / 50Hz		240V / 50Hz	
	WATTAGE (WITHOUT LED)	4W - 38W		4W - 42W		7W - 40W	
	RPM (MIN/MAX)	60 / 165 RPM		63 / 200 RPM		130 / 266 RPM	
	CFM	8138 ft³/m		7724 ft³/m		6172 ft³/m	

TIMBER x QUINCY

This TIMBER series is paired with the QUINCY body. Proving that white pairs well with everything, this range of wooden blades exudes a superb scandinavian sense. This light option is will definitely liven up any space.





MODEL		QUINCY X ASH 60	QUINCY X ASH 52	QUINCY X ASH 43
BUILD	DIAMETER	60 inch (152.4cm)	52 inch (132.1cm)	43 inch (109.3cm)
	MOTOR	UDDC™ motor	UDDC™ motor	UDDC™ motor
	WEIGHT	7kg	6.5kg	6kg
	MATERIAL	Natural Wooden Blades	Natural Wooden Blades	Natural Wooden Blades
	COLOUR	Matt White (Body) , Ash Wood (Blades)	Matt White (Body) , Ash Wood (Blades)	Matt White (Body) , Ash Wood (Blades)
PERFORMANCE	VOLTAGE	240V / 50Hz	240V / 50Hz	240V / 50Hz
	WATTAGE (WITHOUT LED)	4W - 38W	4W - 42W	7W - 40W
	RPM (MIN/MAX)	60 / 165 RPM	63 / 200 RPM	130 / 266 RPM
	CFM	8138 ft³/m	7724 ft³/m	6172 ft³/m



MODEL		QUINCY X OAK 60	QUINCY X OAK 52	QUINCY X OAK 43
BUILD	DIAMETER	60 inch (152.4cm)	52 inch (132.1cm)	43 inch (109.3cm)
	MOTOR	UDDC™ motor	UDDC™ motor	UDDC™ motor
	WEIGHT	7kg	6.5kg	6kg
	MATERIAL	Natural Wooden Blades	Natural Wooden Blades	Natural Wooden Blades
	COLOUR	Mat White (Body) , Oak Wood (Blades)	Mat White (Body) , Oak Wood (Blades)	Mat White (Body) , Oak Wood (Blades)
PERFORMANCE	VOLTAGE	240V / 50Hz	240V / 50Hz	240V / 50Hz
	WATTAGE (WITHOUT LED)	4W - 38W	4W - 42W	7W - 40W
	RPM (MIN/MAX)	60 / 165 RPM	63 / 200 RPM	130 / 266 RPM
	CFM	8138 ft³/m	7724 ft³/m	6172 ft³/m



MODEL	QUINCY X OFFWHITE 60		QUINCY X OFFWHITE 52		QUINCY X OFFWHITE 43		
BUILD	DIAMETER	60 inch (152.4cm)	52 inch (132.1cm)	52 inch (132.1cm)	43 inch (109.3cm)	43 inch (109.3cm)	
	MOTOR	UDDC™ motor	UDDC™ motor	UDDC™ motor	UDDC™ motor	UDDC™ motor	
	WEIGHT	7kg	6.5kg	6.5kg	6kg	6kg	
	MATERIAL	Natural Wooden Blades	Natural Wooden Blades	Natural Wooden Blades	Natural Wooden Blades	Natural Wooden Blades	
PERFORMANCE	COLOUR	Matt White (Body) , Off White Wood (Blades)		Matt White (Body) , Off White Wood (Blades)		Matt White (Body) , Off White Wood (Blades)	
	VOLTAGE	240V / 50Hz		240V / 50Hz		240V / 50Hz	
	WATTAGE (WITHOUT LED)	4W - 38W		4W - 42W		7W - 40W	
	RPM (MIN/MAX)	60 / 165 RPM		63 / 200 RPM		130 / 266 RPM	
	CFM	8138 ft³/m		7724 ft³/m		6172 ft³/m	



DIMENSIONS

FAN BODY & BLADES

Height	10 inch (25.4cm)
Diameter	Ø60 inch (152.4cm) Ø52 inch (132.1cm) Ø43 inch (109.3cm)
Airfoil Angle	Δ 13° / 15.5° / 17° *

*These angles are listed to each diameter in the order of 60 inch, 52 inch and 43 inch.

LED LIGHT (20W)

Height	1 inch (2.5cm)
Diameter	Ø7 inch (17.8cm)



FEATURES

- *N* Mode for a natural breeze
- Dual Rotation - Forward/Reverse mode
- Timer function - 2 or 6 hours

Optional OSRAM Tri-tone dimmable LED light (20W)

- Fast and easy colour tone change
- Dimmable brightness
- Colour tuning for best ambience

Extension rod suspension available for high ceiling (additional charges applies)

WARRANTY

- 10 years for UDDC™ motor
- 2 years for LED light panel only
- 1 year for all peripheral parts



Optional Tri-tone dimmable LED light



Extension rod suspension

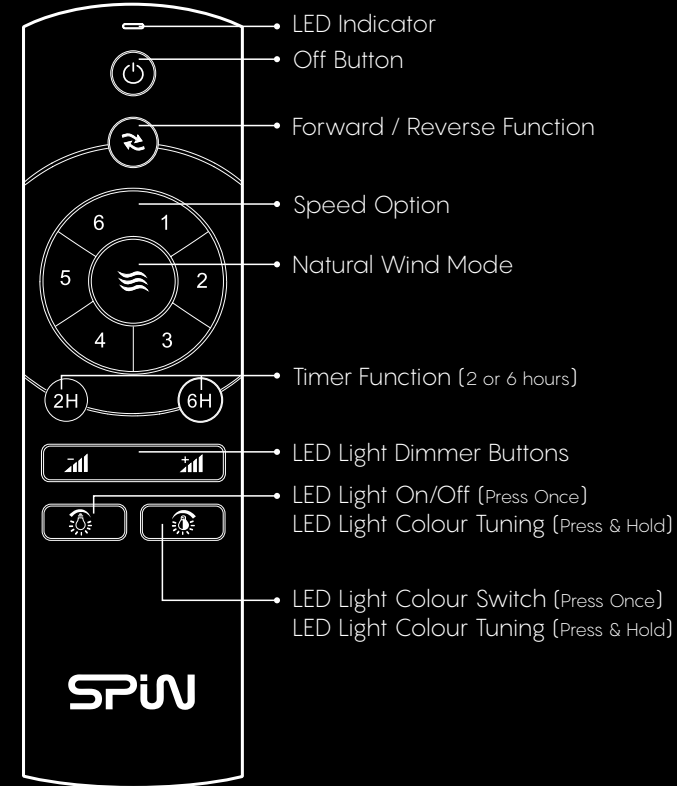


CONTROLS

SPiN has redesigned its remote control to include the new LED light functions.

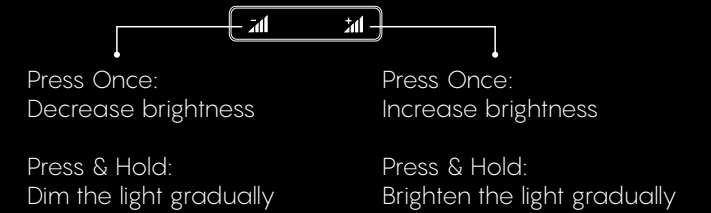
The new remote is encased in a brushed finish to ensure durability and ergonomical grip. It is easily operated with the clear and dual functions buttons.

The remote communicates with a low radio frequency as well, preventing interference with other home appliances.

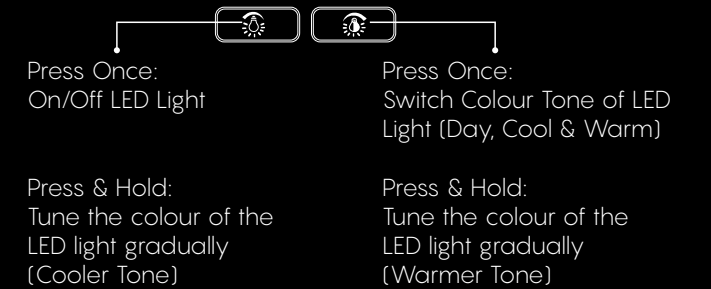


DUAL-FUNCTION BUTTONS

LED Dimmer Buttons



LED Power & Colour Buttons

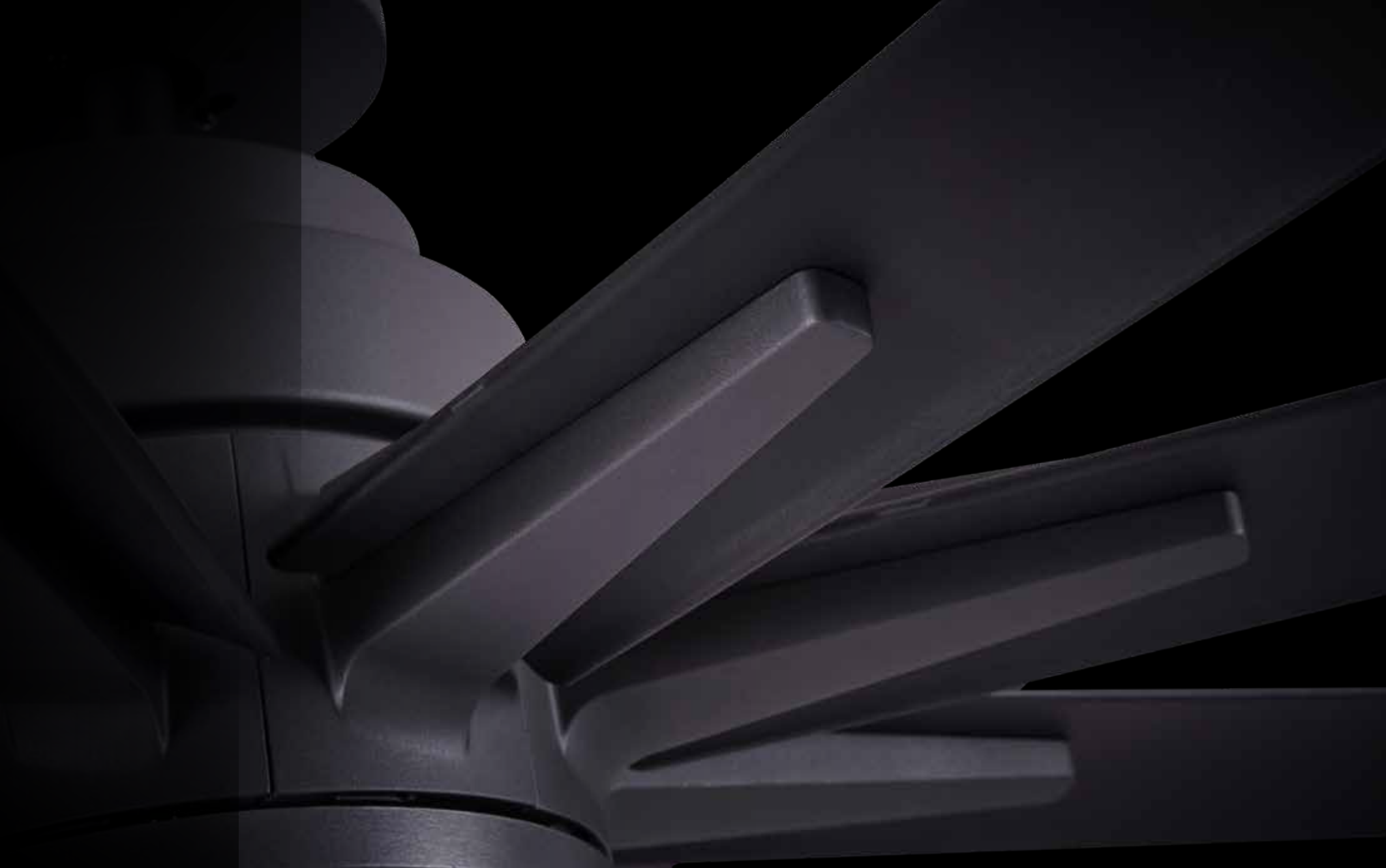


GENTLE GIANT ONIX

The **ONIX** series is SPIN's foray into large format fans. With diameters of 60, 72 or 84 inches, **ONIX** is a perfect stylish addition to any large spaces or homes while still delivering a gentle soothing breeze

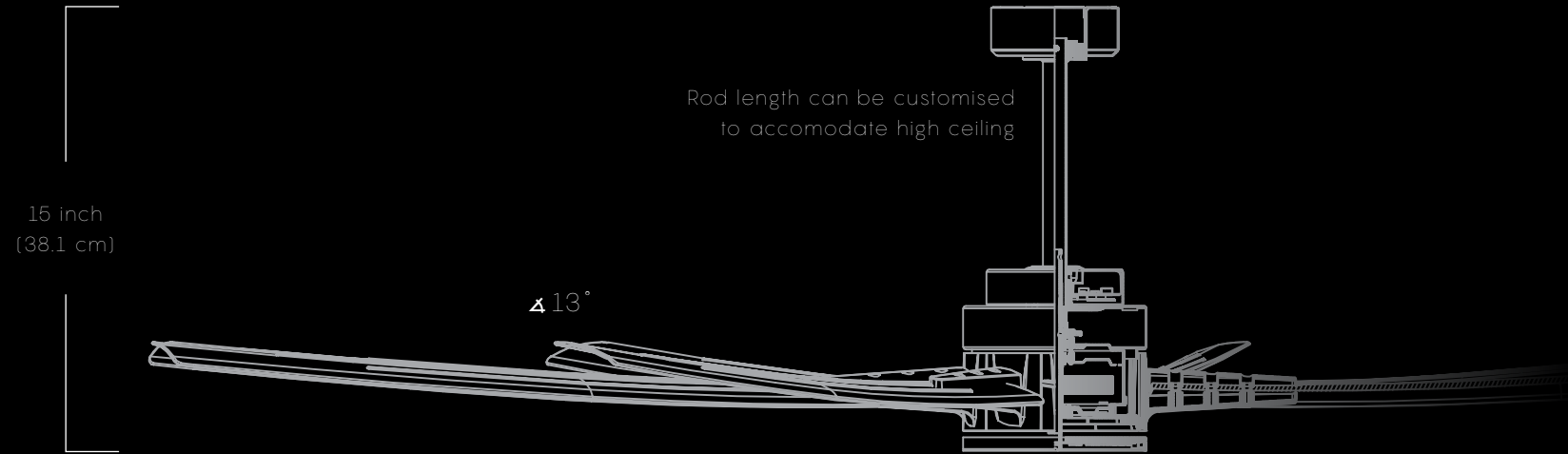
Featuring the Heavy Dynamic Direct Current (HDDC) Motor, this gentle giant serves as a centralised source of ventilation over a larger area.

The airfoils of **ONIX** is engineered with Korean technology and materials, ensuring durability, optimal windflow and secure assembly. Paired with an energy efficient and silent motor, SPIN aims to bring style and function into large format fans.





MODEL	ONIX 84	ONIX 72	ONIX 60	ONIX TRIO
DIAMETER	84 inch (213.4cm)	72 inch (182.9cm)	60 inch (152.4cm)	(S)60 inch ; (M)72 inch ; (L)84 inch
MOTOR	HDDC motor	HDDC motor	HDDC motor	HDDC motor
WEIGHT	16kg / 16.8kg(AL)	15.5kg	15.15kg	15.5kg
MATERIAL	ABS / Alluminium	ABS	ABS	ABS
COLOUR	Black / White / Alluminium	Black / White	Black / White	Black / White
VOLTAGE	240V	240V	240V	240V
WATTAGE (WITHOUT LED)	17W - 45W / 18W - 46W(AL)	13W - 41W	15W - 41W	7W - 40W
RPM (MIN/MAX)	55 / 80 RPM	60 / 100 RPM	90 / 140 RPM	130 / 266 RPM
LIGHTKIT	Tri-Light 22W LED (Optional)	Tri-Light 22W LED (Optional)	Tri-Light 22W LED (Optional)	Tri-Light 22W LED (Optional)



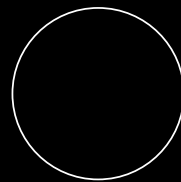
DIMENSIONS

FAN BODY & BLADES

Height 15 inch (38.1cm)
 Diameter Ø84 inch (213.4cm)
 Ø72 inch (182.9cm)
 Ø60 inch (152.4cm)
 Airfoil Angle 13°

LED LIGHT (22W)

Height 2 inch (5.1cm)
 Diameter Ø8.1 inch (20.5cm)



Ø8.1 inch (20.5cm)

FEATURES

- *N* Mode for a natural breeze
- Dual Rotation - Forward/Reverse mode
- Timer function - 1 to 9 hours
- Optional Tri-tone LED (22W)

WARRANTY

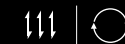
- 10 years for HDDC motor
- 2 years for LED light panel only
- 1 year for all peripheral parts





Optional Tri-tone LED light







CONTROLS


- 
 Forward / Reverse Function: Press and hold to toggle between each mode.


- 
 Natural wind mode: Turn on / off Natural Wind function.


- 
 Timer Function: Set the timer option with a single press of the button (between 1 hour to 9 hours). Press and hold to turn off the timer.

- 
 Speed Buttons: Adjust fan speed.
 -  Increase fan speed
 -  Decrease fan speed

- 
 Fan Power Button: Turn on / off the fan.

- 
 LED Tone Switch: Toggle between the three LED tones - Cool, Day and Warm.

- 
 LED Light On Button: Turns On the LED light.

- 
 LED Light Off Button: Turns Off the LED light.



Remote Control



Wall Control (Detachable)

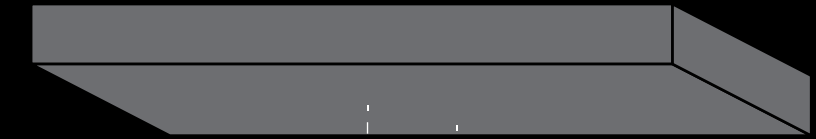
FALSE CEILING INSTALLATION

As the ceiling fan is a moving home appliance, there is bound to be certain vibrations when in use. Therefore, proper installation is crucial to maintain the product's safety and durability.

False ceiling installation should be done correctly. You can refer to the diagram on the right for a brief illustration of how the installation should look like.

If in doubt, kindly contact our Customer Care Centre to seek assistance from our qualified and professional technicians to help you out.

Concrete Ceiling



Bolts

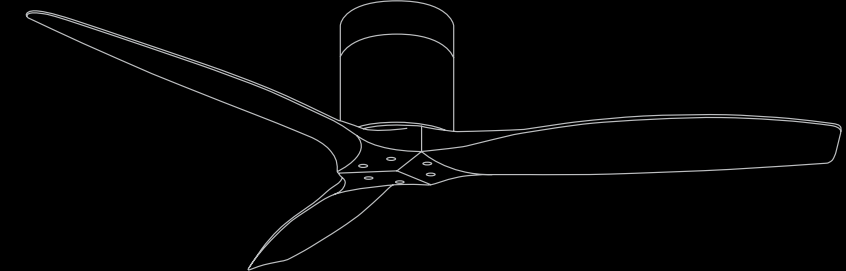
Iron Rods

Wooden Support

False Ceiling

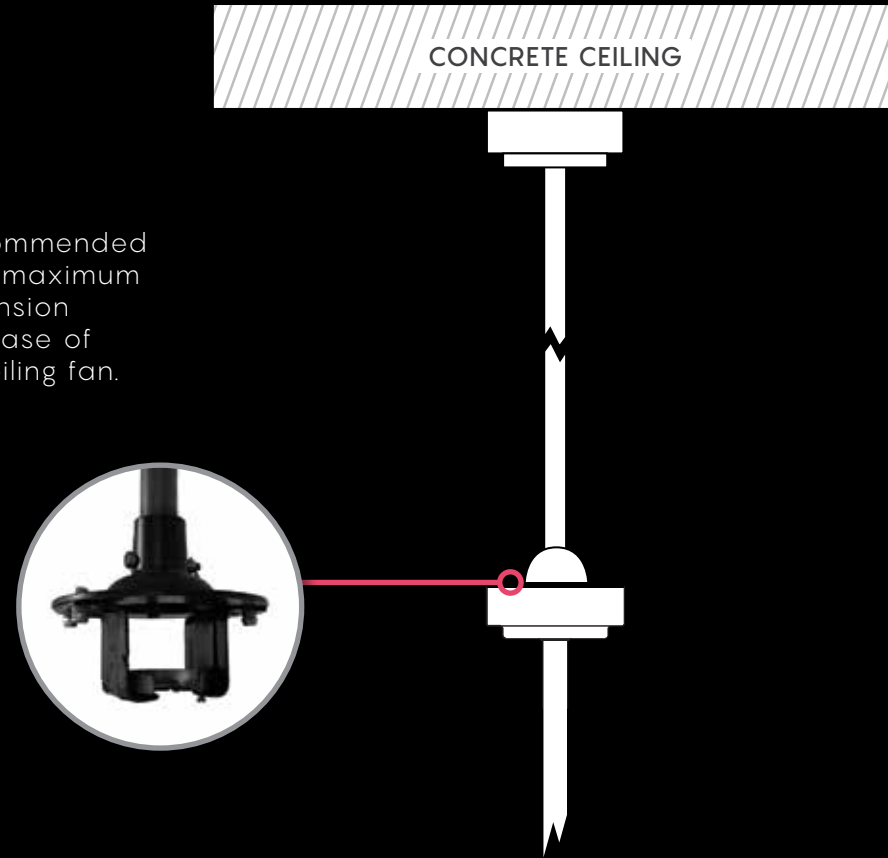
Mounting Bracket

Expansion Screws



EXTENSION PLATE

If the ceiling for installation is higher than the recommended height or the extension rod required exceeds the maximum length SPIN provides, we will have to use an extension plate between two rods (as illustrated) to allow ease of maintenance and minimise vibrations from the ceiling fan.



CUSTOMER CARE

Contact our Customer Care Centre if you have any enquiries or require assistance. We will be pleased to help you with your questions or solve any issues with your SPIN fan.

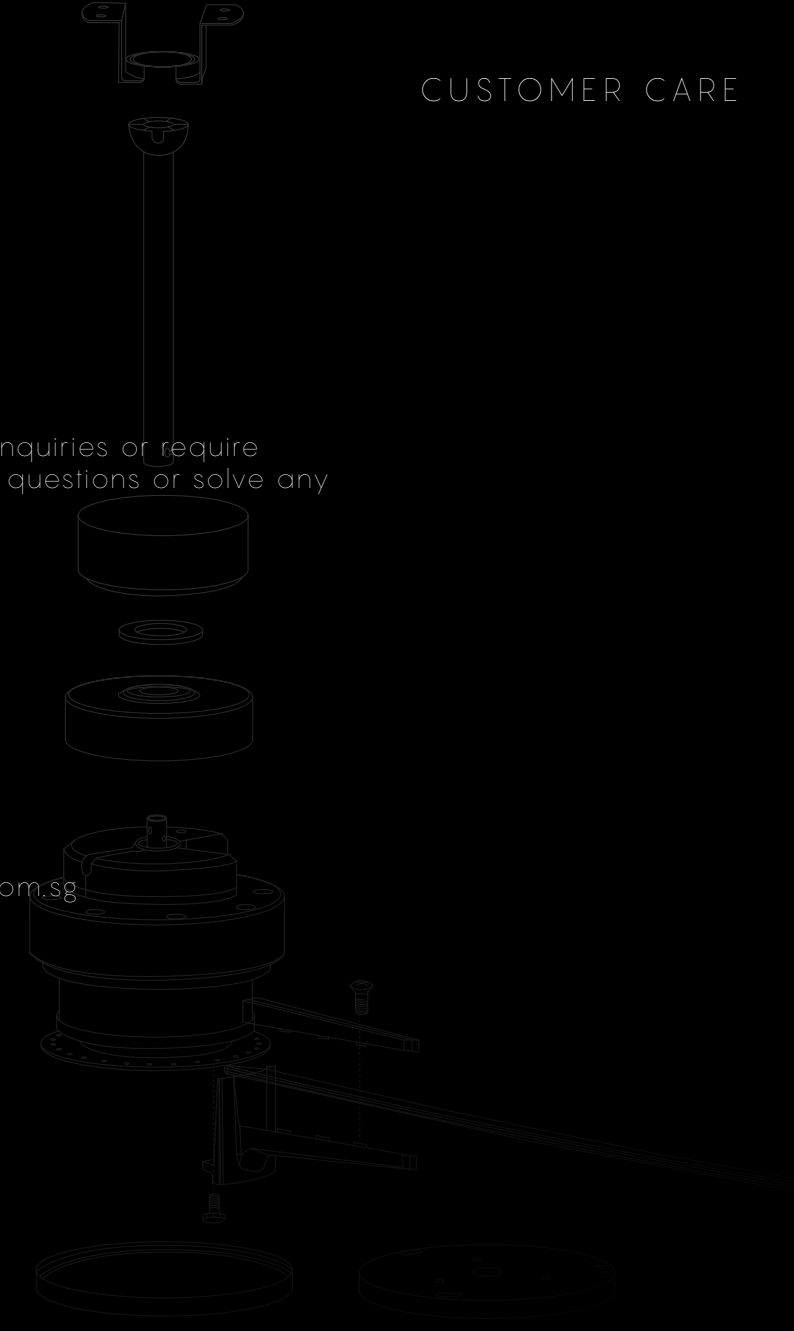
SPIN Main Office & Main Showroom
1 Tampines North Drive 1, #04-15 T-Space S528559

T | (65) 6298 1038

F | (65) 6298 0780

E | enquiries@spinfans.com.sg

W | www.spinfans.com.sg



SPiN

www.spinfans.com.sg

THE EPITOME OF NATURAL WIND