

nicolette mayer
TRIPOD - SHEER
STRAETON • N4 1039 TR10

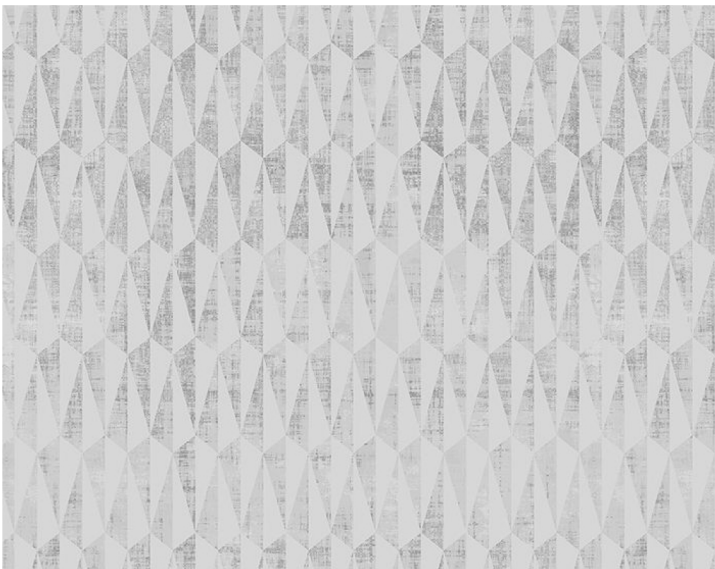
Printed Fabrics, Sheers from the MODERN GALAXY Collection by Nicolette Mayer



APPROX. WIDTH . . . 54" / 137.16 cm
APPROX. REPEAT . . . HORIZONTAL 2.5" / 6.35 cm
VERTICAL 6" / 15.24 cm
MATCH STRAIGHT
CONTENT 100% BELGIAN LINEN
SUGGESTED USE . . . LIGHT DUTY SHEER
CLEANABILITY DRY CLEAN ONLY
MADE IN USA
STOCKED IN SUPPLIERS WAREHOUSE USA
DESIGN GEOMETRIC
GRAPHIC
SCALE MEDIUM

DESIGN INSPIRATION

Inspired in part by Zaha Hadid's neo-futuristic architecture and the numerous modern architects worldwide who interpret the future into new concepts of residential and commercial space, we are inspired by the challenge of what patterns would organically and symbiotically exist within the interiors of such inspired modern spaces. Tripod is a bold, futuristic pattern with multiple perspective points and fragmented geometry to evoke the chaos of modern life. Tripod represents triangles and prisms that reflect light. One side draws in light and the other disperses it. --Nicolette Mayer



DETAIL IMAGE