



nicolette mayer

OTTOMAN FANTASY  
WALLPAPER & FABRIC

# nicolette mayer

© Nicolette Mayer 2015

THE NICOLETTE MAYER COLLECTION WAS FOUNDED BY HUSBAND AND WIFE NICOLETTE MAYER AND JONATHAN OSTROW WHO SHARE A LOVE FOR TIMELESS YET CHIC MODERN DESIGN. BOTH WITH BACKGROUNDS IN FASHION, FURNITURE, FABRICS AND PRODUCT DESIGN, THE DESIGN DUO COLLECTION OF HOME WALLPAPERS THAT ARE WORLD'S MOST DISCERNING THEIR CLIENTS. AN AWARD-OFTEN FEATURED IN ELLE DIGEST, HOUSE BEAUTIFUL, COUNTRY HOUSE MAGAZINE, WALL STREET JOURNAL IDEAS, AMONG OTHERS, THE AMONG THE TOP EXCLUSIVE MADE IN THE U.K. AND U.S., MANUFACTURES AND TOP YEAR, THE NICOLETTE MAYER COLLECTION OF OTTOMAN-INSPIRED FANTASY PATTERNS THAT HAVE BEEN CRITICALLY ACCLAIMED, OFTEN DESCRIBED AS "DREAM-LIKE" AND UTOPIAN IN ITS CAPTURE OF MODERN ISLAMIC, MOROCCAN, MOORISH OR OTTOMAN STYLE.



BEGAN TO CREATE A DÉCOR FABRICS AND CELEBRATED AMONG THE INTERIOR DESIGNERS AND WINNING BRAND THAT IS DÉCOR, ARCHITECTURAL TRADITIONAL HOME, LUXE INTERIORS & DESIGN, HOT LIST, MARIE CLAIRE BRAND HAS DISTRIBUTION INTERNATIONAL EDEURS. USING THE BEST QUALITY MATERIALS, THIS BRAND LAUNCHED A

*"An historian by training, I approach design utilizing both aesthetic passion and historical passion."*

*Nicolette Mayer*

INSPIRED BY TOPKAPI PALACE, IZNIK POTTERY, AND THE BEAUTIFUL CARPETS IN PALACES OLD AND NEW, WE REIMAGINED AN IDEAL OTTOMAN-INSPIRED NEW CHIC.

COLORS THAT ARE FRESH AND MODERN, BLENDED WITH THEMES THAT DATE BACK HUNDREDS OF YEARS, OUR OTTOMAN COLLECTION INCLUDES SUMPTUOUS VELVETS AND BELGIAN LINENS, WITH METALLIC GRASSCLOTH WALLPAPERS AND WALL PANELS. ALL OUR WALL PANELS ARE UNIQUELY DESIGNED TO BE CUTTABLE AT POPULAR 9', 10' & 12' WALL HEIGHTS, SOLVING MANY TYPICAL ISSUES DESIGNERS HAVE IN ORDERING PANELS, AS ONE CAN CUT BORDERS, SEPARATE HALF THE DESIGN, AND ADD PARTS OF THE PANELS TO INDIVIDUALIZE THE PANELS TO THE SPACE OR PROJECT ONE IS WORKING ON. THE DESIGNER HAS ULTIMATE FLEXIBILITY AND CREATIVITY, WHICH IS VERY UNIQUE TO OUR BRAND. OUR DESIGN METHOD HIDES ALMOST ALL SEAMS, AND IS TRULY ALMOST IMPERCEPTABLE! WE HAVE CLASSIC BLUE & WHITE, AN INCREDIBLE GREEN-PINK, LILAC-GOLD, AND RED-TURQUOISE WHICH FITS IN THE MOST CONTEMPORARY TO THE MOST TRADITIONAL OF SPACES. WE LOVE TO MIX AND MATCH WALLPAPERS AND FABRICS, TO LAYER DIFFERENT PATTERNS IN A VARIETY OF TEXTURES. YOU REALLY CANT GO WRONG, NOT MATTER HOW YOU DESIGN THE ROOM.

INSPIRED BY TRADITIONAL ARABESQUE POMEGRANATE PATTERNS USED IN TURKISH TILES, BYZANTINE IS A FLORAL ORNAMENTAL PATTERN THAT EVOKES TULIPS, POMEGRANATES AND RIBBONS- THEMES USED COMMONLY THROUGHOUT HISTORY IN OTTOMAN DECORATIVE ARTS SUCH AS TILE WORK, AND IZNIK CERAMICS. TOPKAPI GARDEN IS A PATTERN INSPIRED BY THE IZNIK TILED WALL MURAL AT TOPKAPI PALACE IN ISTAMBUL. A GARDEN OF CYPRESS TREES, TALL AS MINARETS AND UNDERPLANTED WITH HYACINTH BELLS, HAS BEEN IMMORTALIZED ON WALLPAPER JUST AS A SMALL TILE PANEL AMONG THOUSANDS HAS LINED AN ALCOVE IN THE HAREM, ONCE THE MOST PRIVATE AND FOBIDDEN PART OF THE PALACE.



NICOLETTEMAYER

Nicolette Mayer Collection, Inc. 3750 NE 6th Drive Boca Raton FL 33431 United States +15612416906 [info@nicolettemayer.com](mailto:info@nicolettemayer.com)

NICOLETTEMAYER  
COLLECTION







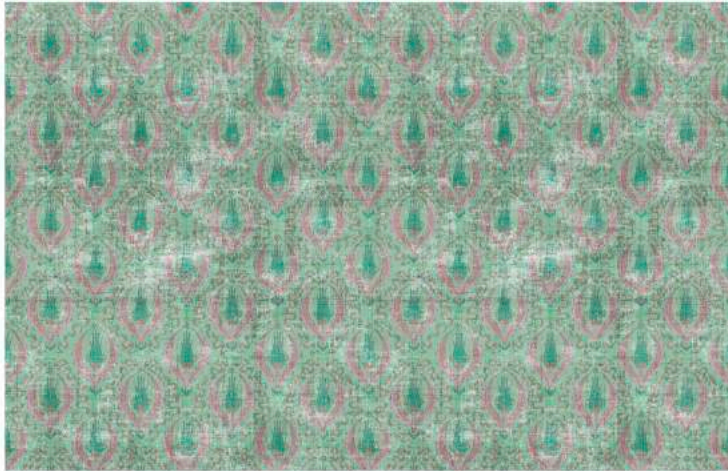
**WALLPAPER**

# The Royal Treatment

To turn a featureless space into something *beyond* in mere hours, consider Florida designer Nicolette Mayer's latest grass cloth collection. Her muse: the tiled murals of Istanbul's Topkapi Palace, with the faded hues of heirloom Ottoman rugs. "It's my fantasy take on a faraway place and time," she says.

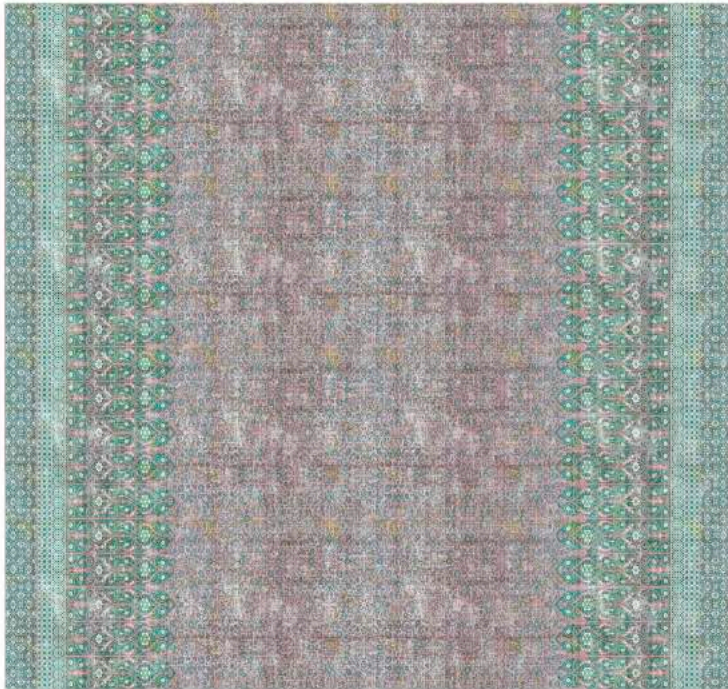
Topkapi Garden in Green/Pink. By Nicolette Mayer. Metallic grass

# nicolette mayer



NICOLETTE MAYER COLLECTION  
DESIGN NAME: BYZANTINE  
COLOR: GREEN

CONTENT: 53% LINEN 47% COTTON  
VERTICAL REPEAT: 6.75" V / 17.1cm  
HORIZONTAL REPEAT: 6.75" H / 17.1cm  
WIDTH: 54 INCHES / 137 CM



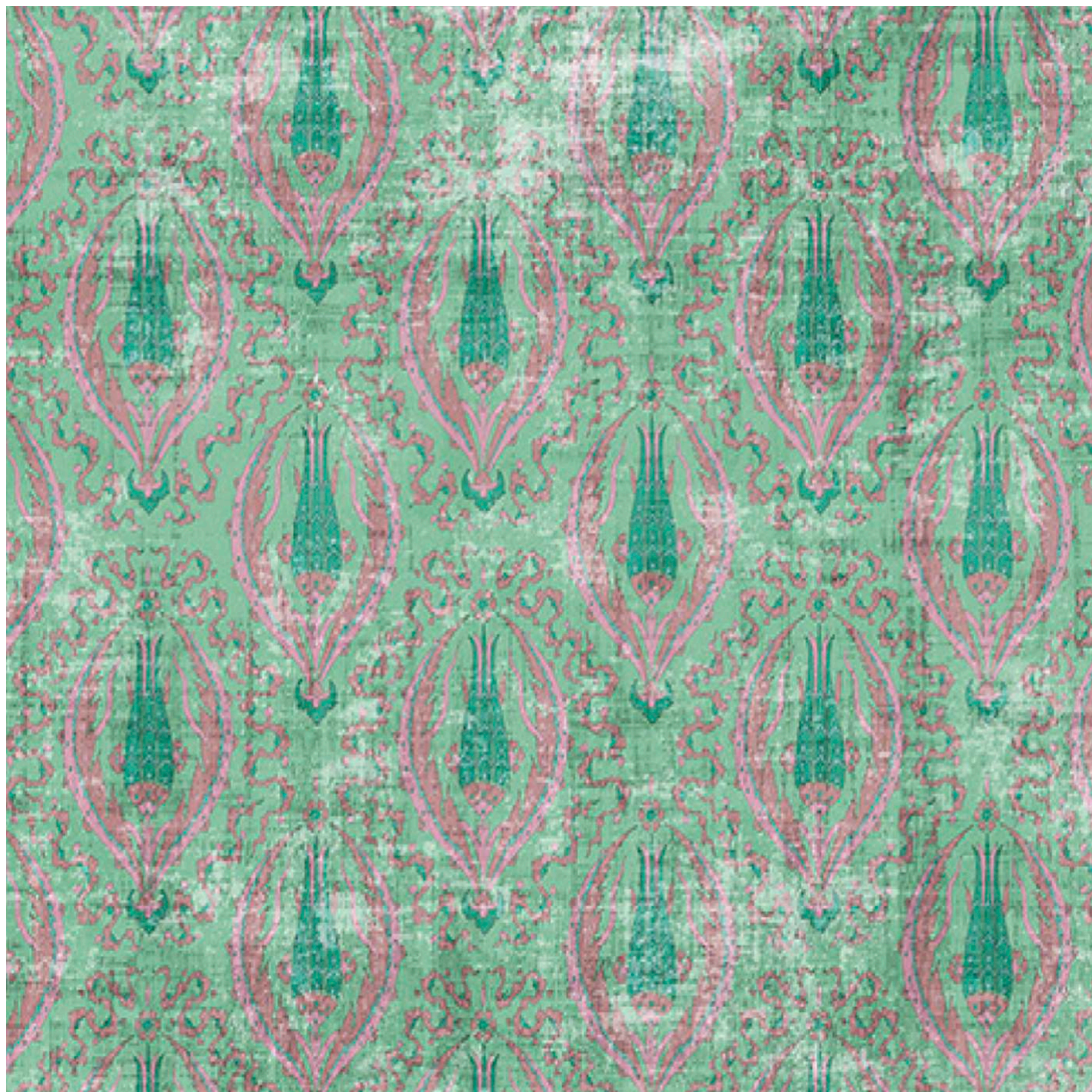
NICOLETTE MAYER COLLECTION  
DESIGN NAME: SULTAN  
COLOR: GREEN

CONTENT: 100% COTTON VELVET  
VERTICAL REPEAT: 12.75" V / 32.38cm  
HORIZONTAL REPEAT: 54" H / 137cm  
WIDTH: 54 INCHES / 137 CM



NICOLETTE MAYER COLLECTION  
DESIGN NAME: TOPKAPI  
COLOR: GREEN PINK

CONTENT: 100% LINEN SHEER  
VERTICAL REPEAT: 144" V / 365.76cm  
HORIZONTAL REPEAT: 54" H / 137cm  
WIDTH: 54 INCHES / 137 CM



# nicolette mayer

## **NICOLETTE MAYER COLLECTION**

**DESIGN NAME:** BYZANTINE JEWEL

**COLOR:** GREEN

**DESIGN NUMBER:**

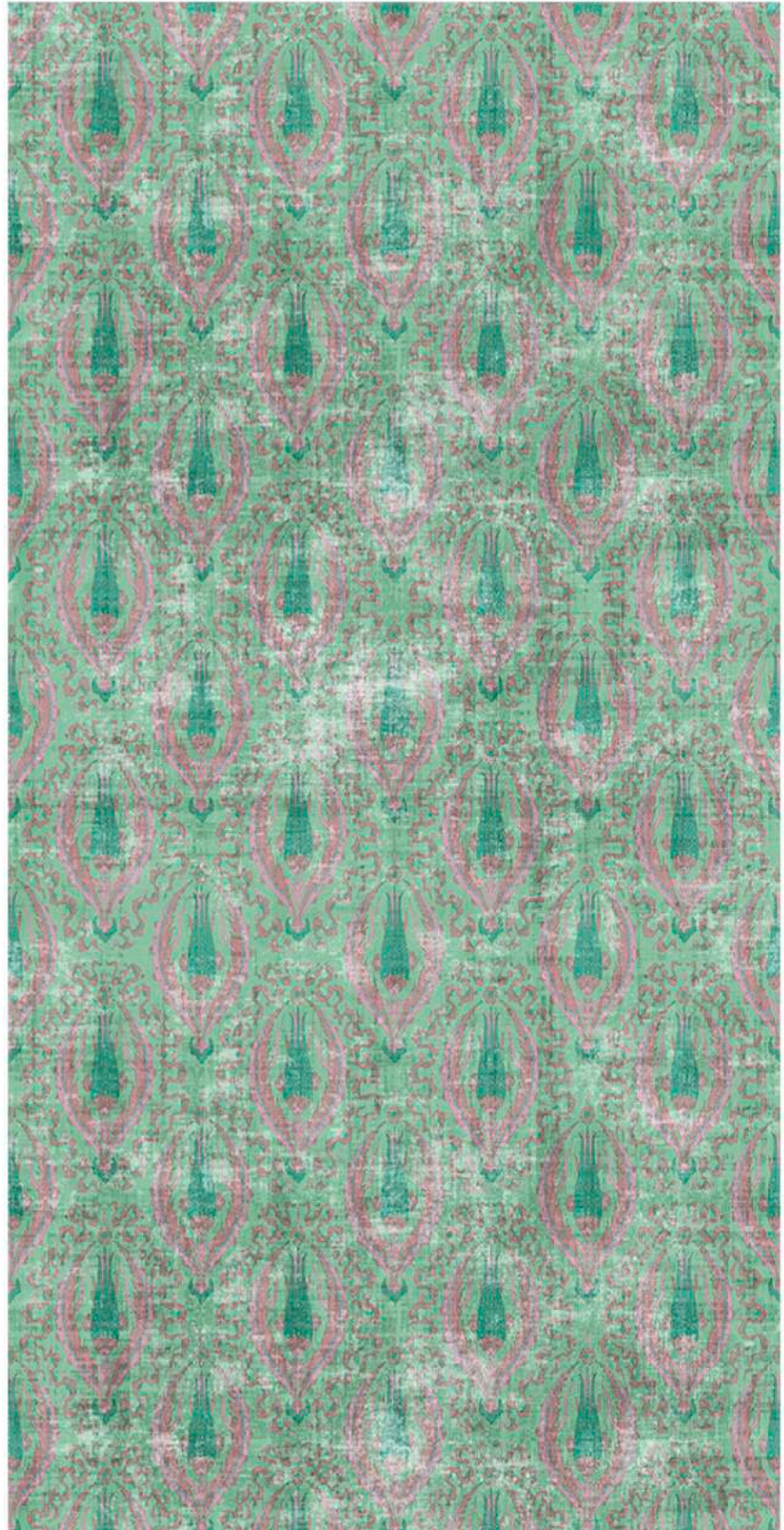
**ROLL SIZE:** 34" W X 8 YARDS / 86 cm X 7.3 m

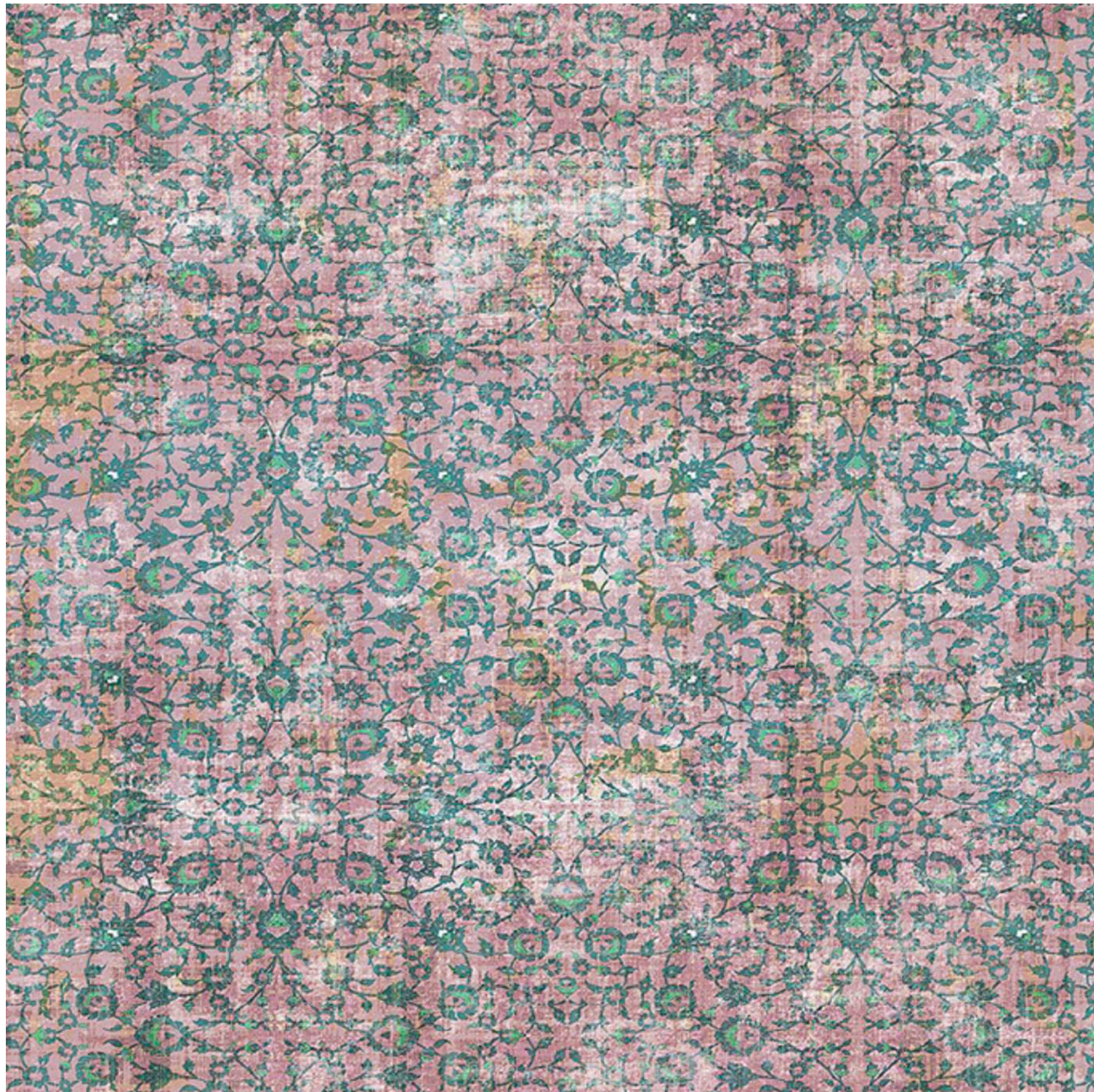
**REPEAT:** 8.5" V X 8.5" H / 21.59cm X 21.59 cm

GRASSCLOTH ON PAPER

"Inspired by traditional arabesque pomegranate patterns used in Turkish tiles, Byzantine is a Floral Ornamental pattern that evokes tulips, pomegranates and ribbons- themes used commonly throughout history in Ottoman decorative arts such as tile work, and Iznik ceramics."

*-Nicolette Mayer*







nicolette mayer

**NICOLETTE MAYER COLLECTION**

**DESIGN NAME:** IZNIK OVERDYE

**COLOR:** GREEN PINK

**DESIGN NUMBER:**

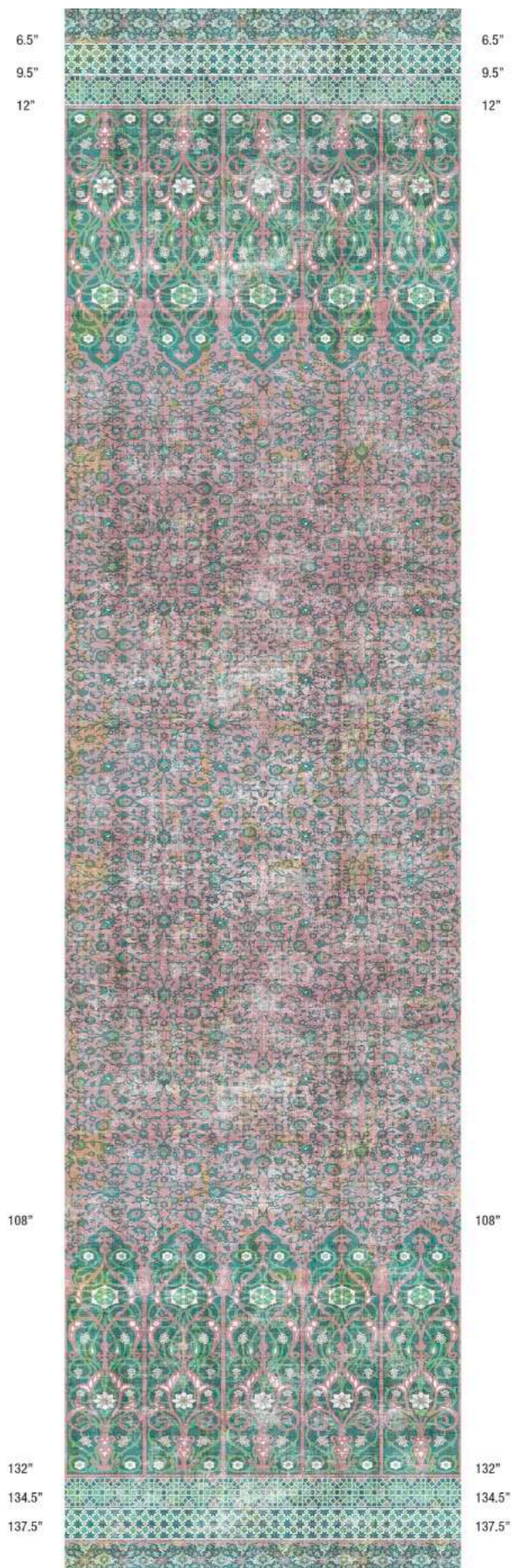
**ROLL SIZE:** 34" WIDE X 4 YARDS / 86.5 cm X 3.65m

**REPEAT:** 144" HIGH / 3.65m

GRASSCLOTH ON PAPER

"Topkapi Palace, Iznik style pottery, and the beautiful carpets in Palaces old and new, we tried to dream and reimagine an ideal Ottoman-inspired new kind of chic. Colors that are fresh and modern, blended with themes that date back hundreds of years, Topkapi Garden includes sumptuous velvets and Belgian linens, with metallic grasscloth wallpapers and wall panels. Wall panels that are uniquely designed to be cuttable at popular and 9', 10' and 12' wall heights, solving many typical issues designers have. Topkapi Garden is a pattern inspired by the Iznik tiled wall mural at the Topkapi Palace, in Istanbul, Turkey. A garden of cypress trees, tall as minarets and underplanted with hyacinth bells, has been immortalized on tiles in an alcove in the harem, once the most private—and forbidden—part of the palace."

*-Nicolette Mayer*





nicolette mayer

**NICOLETTE MAYER COLLECTION**

**DESIGN NAME:** TOPKAPI GARDEN

**COLOR:** GREEN PINK

**DESIGN NUMBER:**

**ROLL SIZE:** 34" WIDE X 4 YARDS / 86.5 cm X 3.65m

**REPEAT:** 144" HIGH / 3.65m

GRASSCLOTH ON PAPER

"Topkapi Palace, Iznik style pottery, and the beautiful carpets in Palaces old and new, we tried to dream and reimagine an ideal Ottoman-inspired new kind of chic. Colors that are fresh and modern, blended with themes that date back hundreds of years, Topkapi Garden includes sumptuous velvets and Belgian linens, with metallic grasscloth wallpapers and wall panels. Wall panels that are uniquely designed to be cuttable at popular and 9', 10' and 12' wall heights, solving many typical issues designers have. Topkapi Garden is a pattern inspired by the Iznik tiled wall mural at the Topkapi Palace, in Istanbul, Turkey. A garden of cypress trees, tall as minarets and underplanted with hyacinth bells, has been immortalized on tiles in an alcove in the harem, once the most private—and forbidden—part of the palace."

*-Nicolette Mayer*



Please contact your local representative showroom



# nicolette mayer



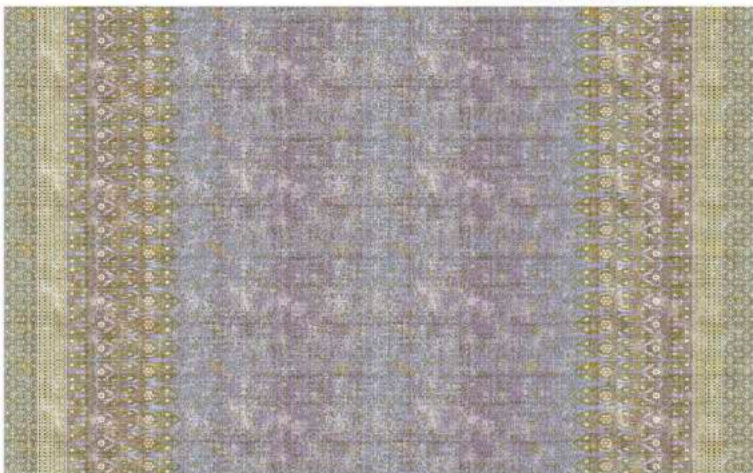
NICOLETTE MAYER COLLECTION  
DESIGN NAME: BYZANTINE  
COLOR: GOLD

CONTENT: 53% LINEN, 47% COTTON  
VERTICAL REPEAT: 6.75" V / 17.1cm  
HORIZONTAL REPEAT: 6.75 H / 17.1cm  
WIDTH: 54 INCHES / 137 CM



NICOLETTE MAYER COLLECTION  
DESIGN NAME: BYZANTINE  
COLOR: LLAC

CONTENT: 53% LINEN, 47% COTTON  
VERTICAL REPEAT: 6.75" V / 17.1cm  
HORIZONTAL REPEAT: 6.75 H / 17.1cm  
WIDTH: 54 INCHES / 137 CM



NICOLETTE MAYER COLLECTION  
DESIGN NAME: SULTAN  
COLOR: GOLD

CONTENT: 100% COTTON VELVET  
VERTICAL REPEAT: 12.75" V / 32.38cm  
HORIZONTAL REPEAT: 54" H / 137cm



NICOLETTE MAYER COLLECTION  
DESIGN NAME: TOPKAPI  
COLOR: GOLD PURPLE

CONTENT: 100% LINEN SHEER  
VERTICAL REPEAT: 144" V / 365.76cm  
HORIZONTAL REPEAT: 54" H / 137cm



# nicolette mayer

## **NICOLETTE MAYER COLLECTION**

**DESIGN NAME:** BYZANTINE JEWEL

**COLOR:** LILAC

**DESIGN NUMBER:**

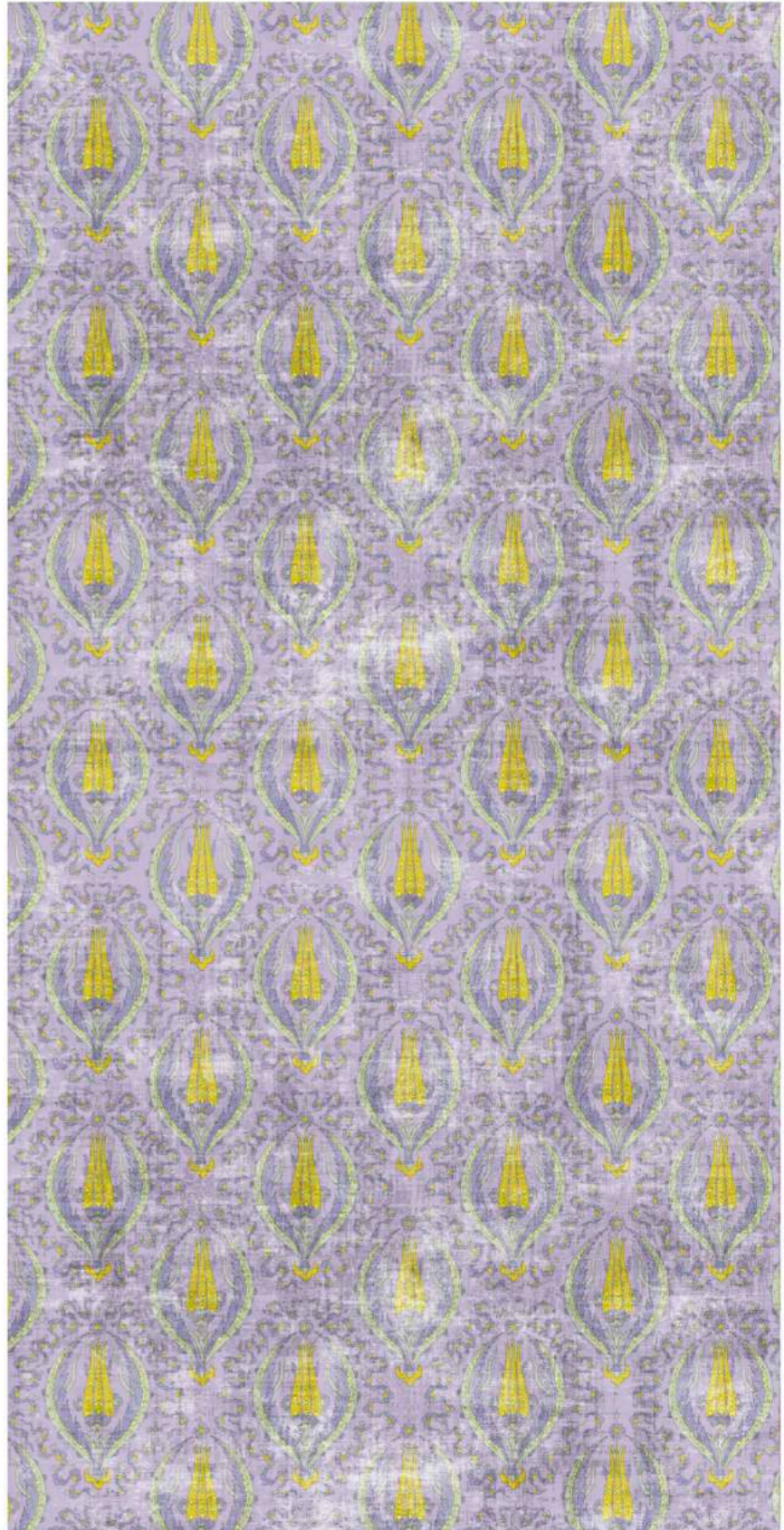
**ROLL SIZE:** 34" W X 8 YARDS / 86 cm X 7.3 m

**REPEAT:** 8.5" V X 8.5" H / 21.59cm X 21.59 cm

GRASSCLOTH ON PAPER

"Inspired by traditional arabesque pomegranate patterns used in Turkish tiles, Byzantine is a Floral Ornamental pattern that evokes tulips, pomegranates and ribbons- themes used commonly throughout history in Ottoman decorative arts such as tile work, and Iznik ceramics."

*-Nicolette Mayer*







# nicolette mayer

## **NICOLETTE MAYER COLLECTION**

**DESIGN NAME:** BYZANTINE JEWEL

**COLOR:** GOLD

**DESIGN NUMBER:**

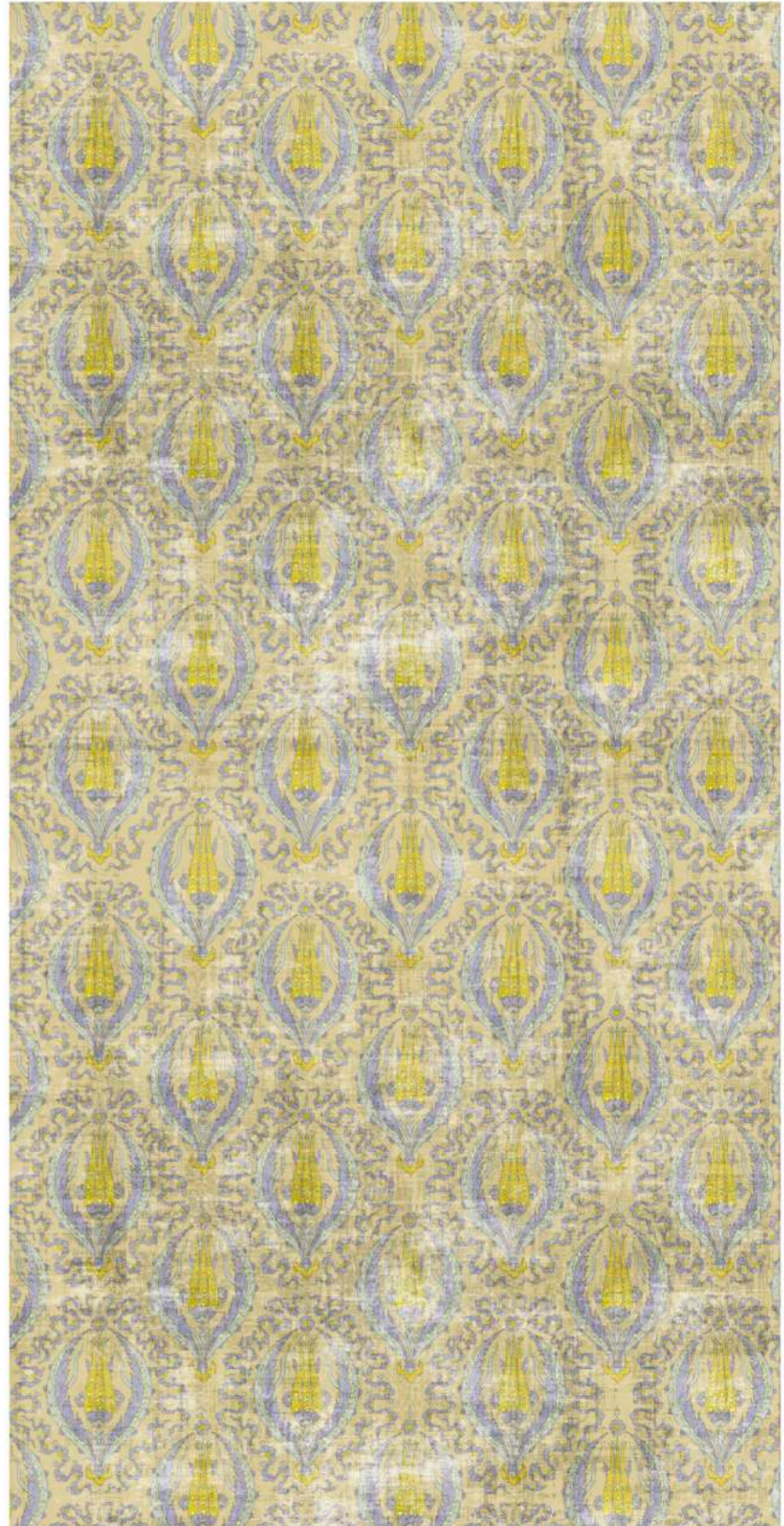
**ROLL SIZE:** 34" W X 8 YARDS / 86 cm X 7.3 m

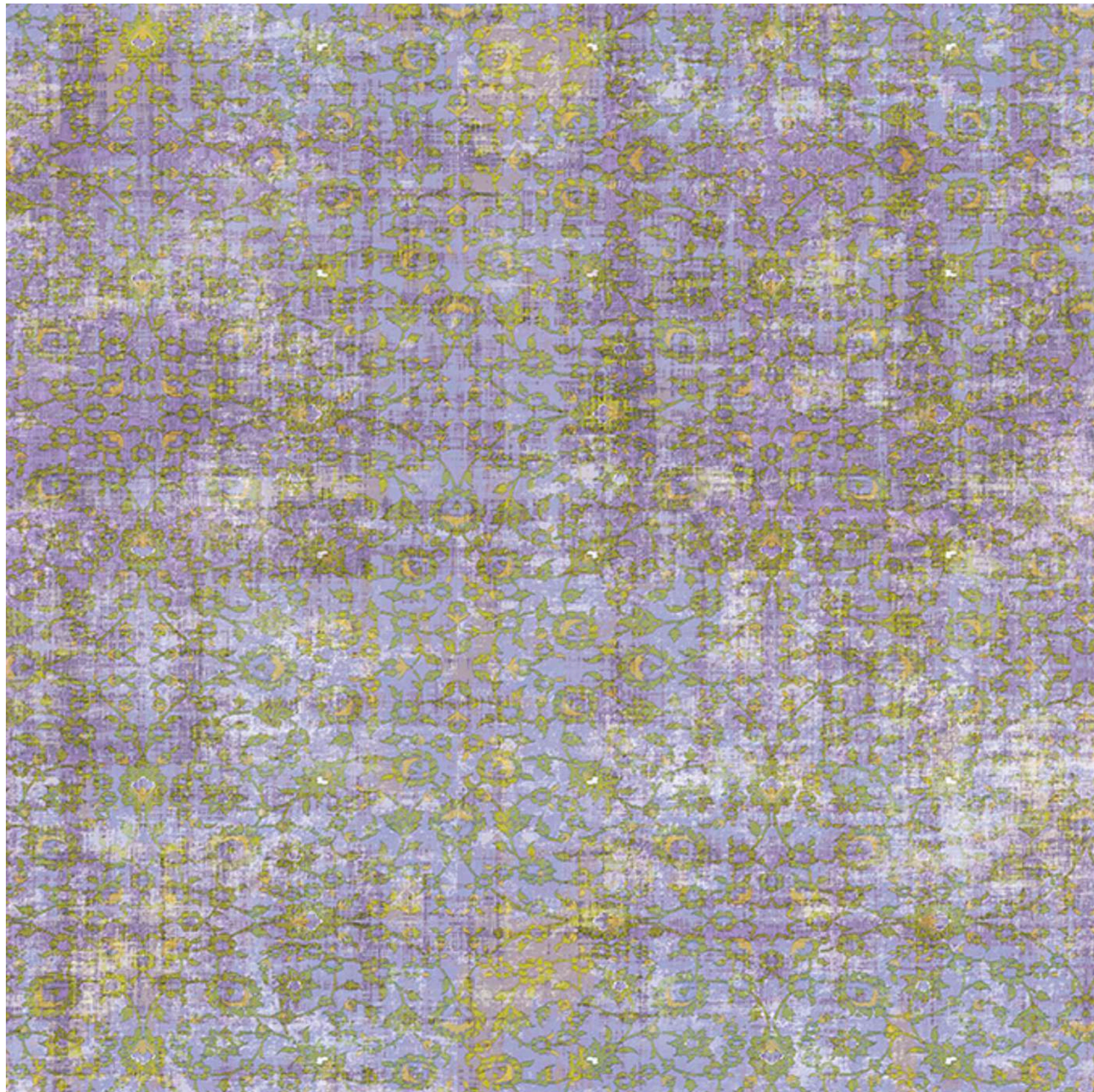
**REPEAT:** 8.5" V X 8.5" H / 21.59cm X 21.59 cm

GRASSCLOTH ON PAPER

"Inspired by traditional arabesque pomegranate patterns used in Turkish tiles, Byzantine is a Floral Ornamental pattern that evokes tulips, pomegranates and ribbons- themes used commonly throughout history in Ottoman decorative arts such as tile work, and Iznik ceramics."

*-Nicolette Mayer*





nicolette mayer

**NICOLETTE MAYER COLLECTION**

**DESIGN NAME:** IZNIK OVERDYE

**COLOR:** GOLD-PURPLE

**DESIGN NUMBER:**

**ROLL SIZE:** 34" WIDE X 4 YARDS /86.5 cm X 3.65m

**REPEAT:** 144" HIGH / 3.65m

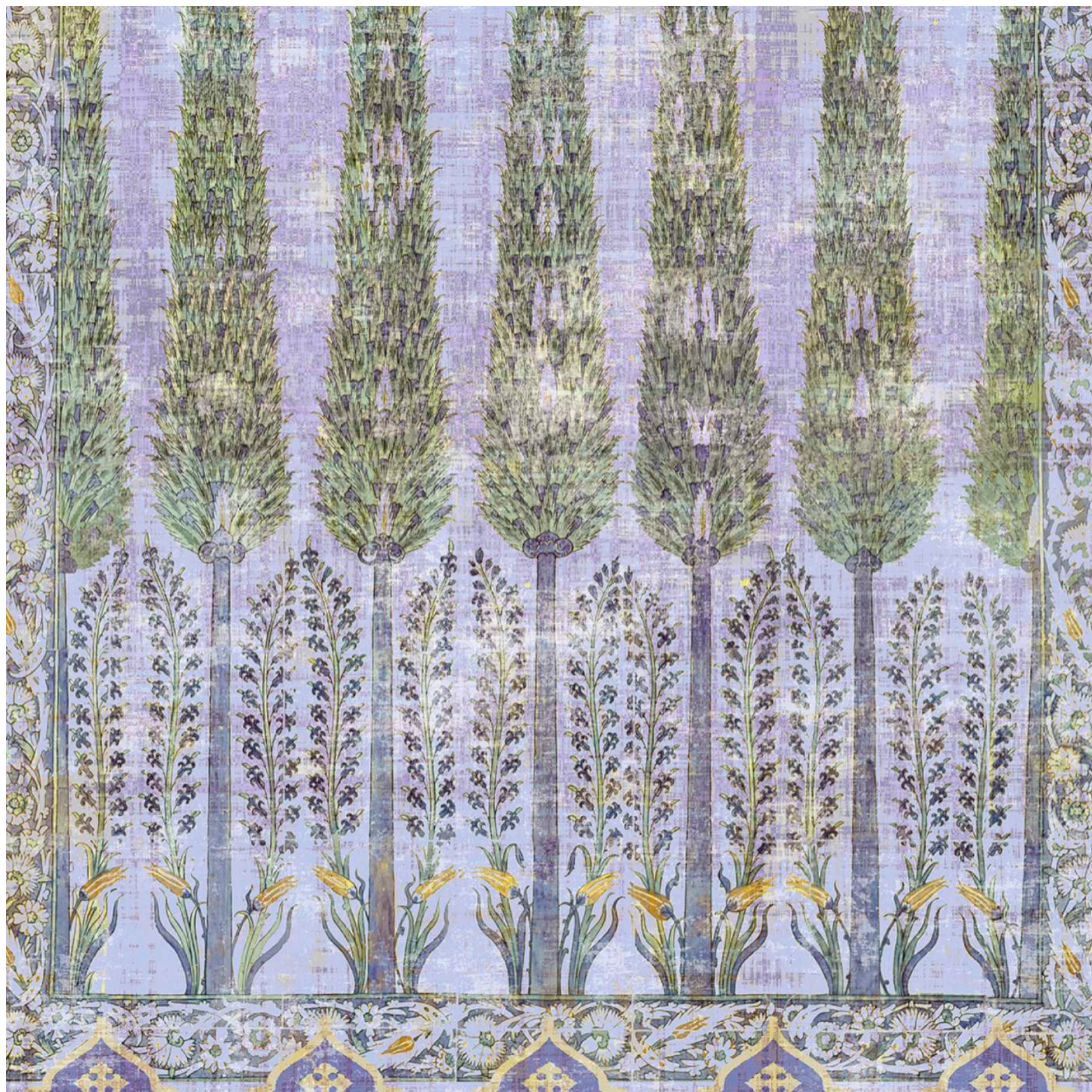
GRASSCLOTH ON PAPER

“Topkapi Palace, Iznik style pottery, and the beautiful carpets in Palaces old and new, we tried to dream and reimagine an ideal Ottoman-inspired new kind of chic. Colors that are fresh and modern, blended with themes that date back hundreds of years, Topkapi Garden includes sumptuous velvets and Belgian linens, with metallic grasscloth wallpapers and wall panels. Wall panels that are uniquely designed to be cuttable at popular and 9', 10' and 12' wall heights, solving many typical issues designers have. Topkapi Garden is a pattern inspired by the Iznik tiled wall mural at the Topkapi Palace, in Istanbul, Turkey. A garden of cypress trees, tall as minarets and underplanted with hyacinth bells, has been immortalized on tiles in an alcove in the harem, once the most private—and forbidden—part of the palace.”

*-Nicolette Mayer*



Please contact your local representative showroom



# nicolette mayer

## NICOLETTE MAYER COLLECTION

**DESIGN NAME:** TOPKAPI GARDEN

**COLOR:** GOLD-PURPLE

**DESIGN NUMBER:**

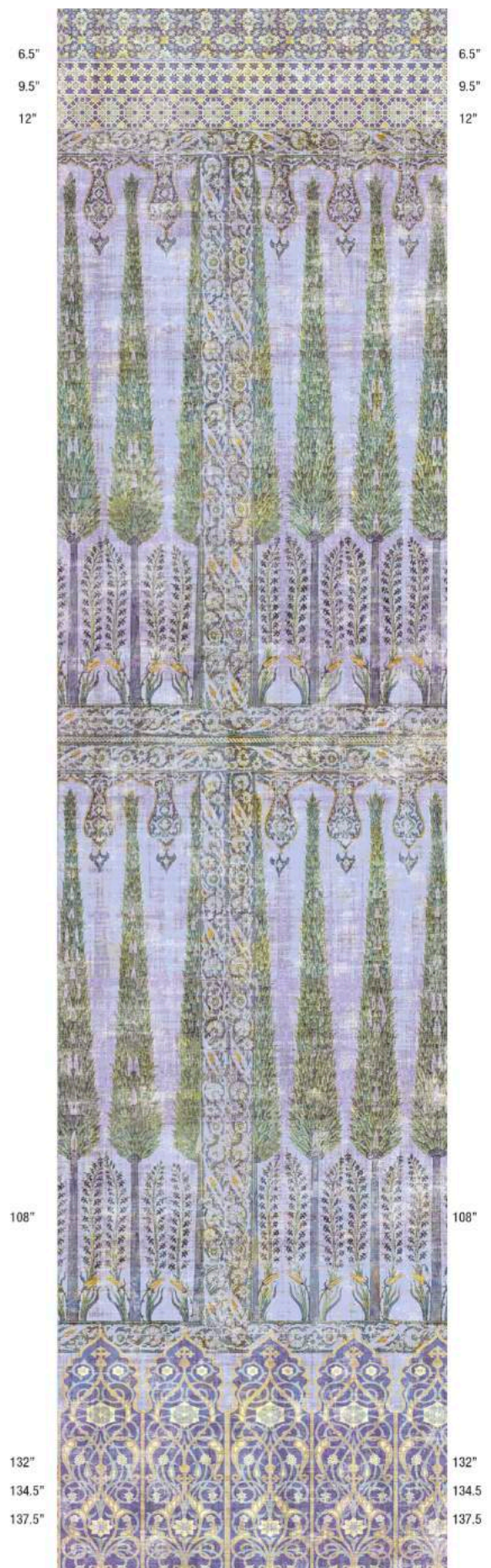
**ROLL SIZE:** 34" WIDE X 4 YARDS / 86.5 cm X 3.65m

**REPEAT:** 144" HIGH / 3.65m

GRASSCLOTH ON PAPER

"Topkapi Palace, Iznik style pottery, and the beautiful carpets in Palaces old and new, we tried to dream and reimagine an ideal Ottoman-inspired new kind of chic. Colors that are fresh and modern, blended with themes that date back hundreds of years, Topkapi Garden includes sumptuous velvets and Belgian linens, with metallic grasscloth wallpapers and wall panels. Wall panels that are uniquely designed to be cuttable at popular and 9', 10' and 12' wall heights, solving many typical issues designers have. Topkapi Garden is a pattern inspired by the Iznik tiled wall mural at the Topkapi Palace, in Istanbul, Turkey. A garden of cypress trees, tall as minarets and underplanted with hyacinth bells, has been immortalized on tiles in an alcove in the harem, once the most private—and forbidden—part of the palace."

*-Nicolette Mayer*

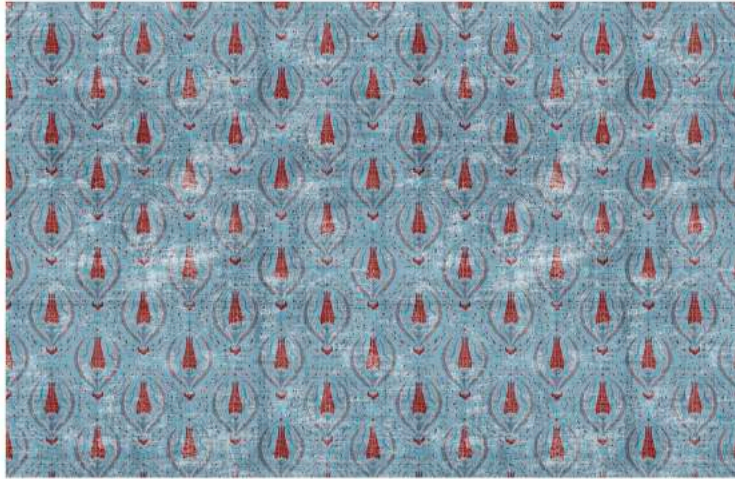


Please contact your local representative showroom



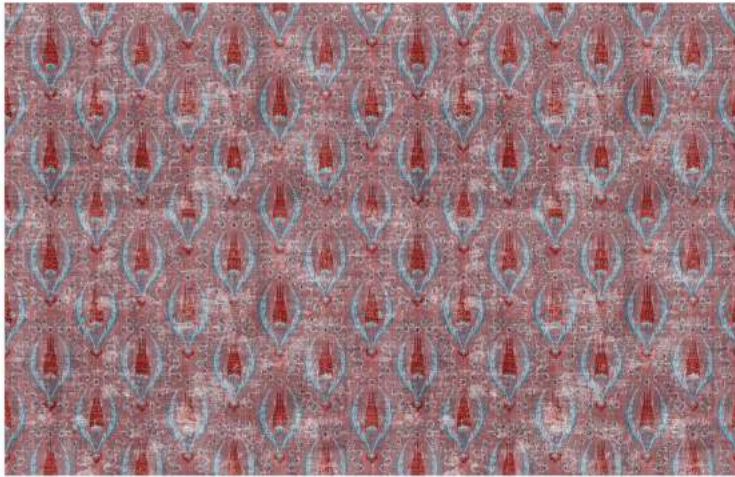


# nicolette mayer



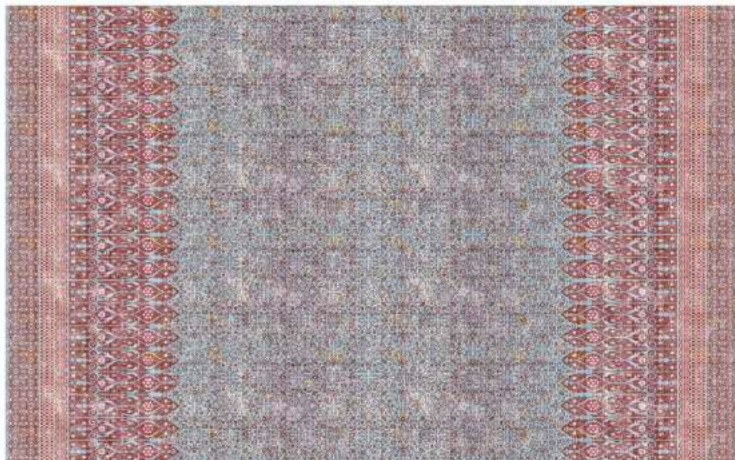
NICOLETTE MAYER COLLECTION  
DESIGN NAME: BYZANTINE  
COLOR: BLUE

CONTENT: 53% LINEN, 47% COTTON  
VERTICAL REPEAT: 6.75" V / 17.1cm  
HORIZONTAL REPEAT: 6.75" H / 17.1cm  
WIDTH: 54 INCHES / 137 CM



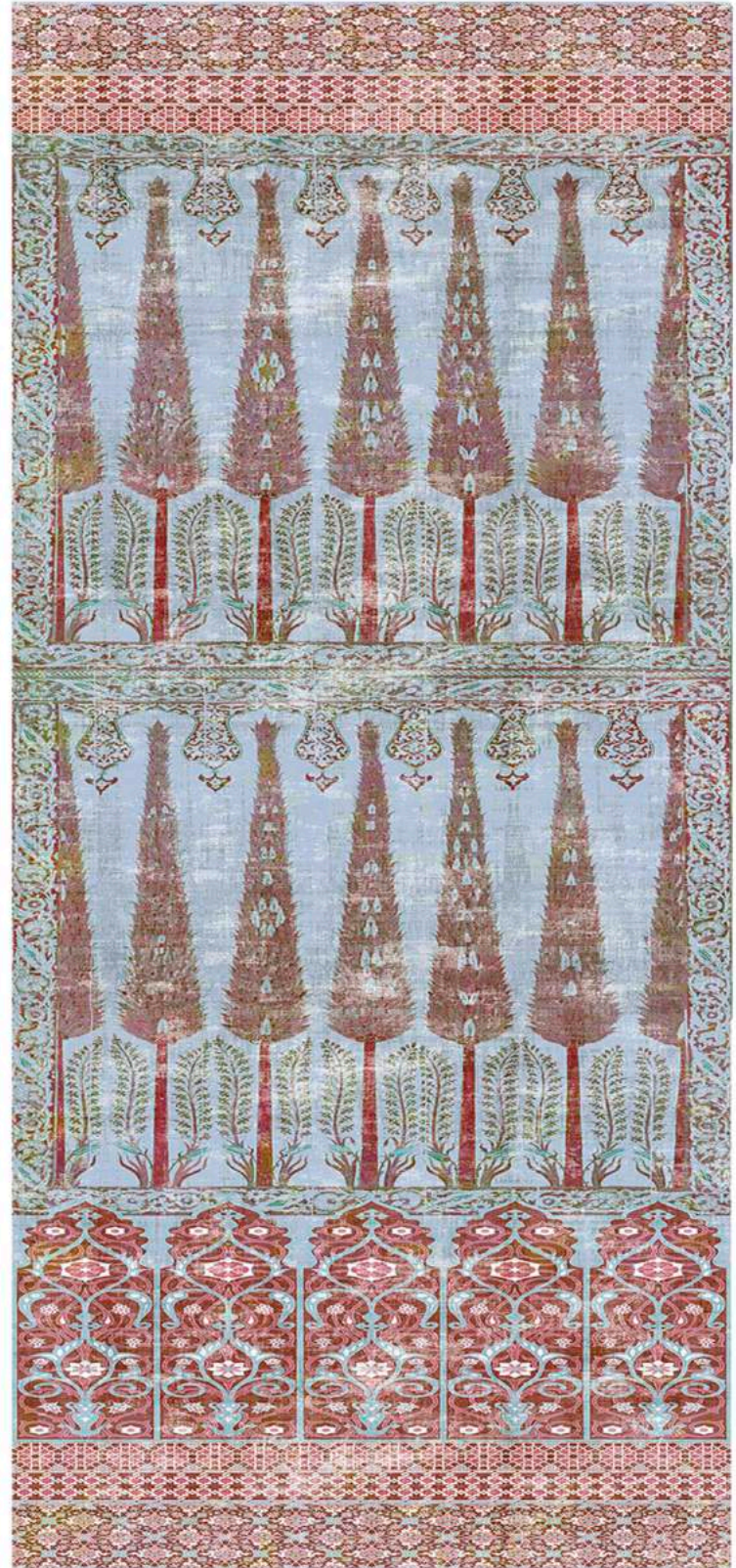
NICOLETTE MAYER COLLECTION  
DESIGN NAME: BYZANTINE  
COLOR: RED

CONTENT: 53% LINEN, 47% COTTON  
VERTICAL REPEAT: 6.75" V / 17.1cm  
HORIZONTAL REPEAT: 6.75" H / 17.1cm  
WIDTH: 54 INCHES / 137 CM



NICOLETTE MAYER COLLECTION  
DESIGN NAME: SULTAN  
COLOR: RED

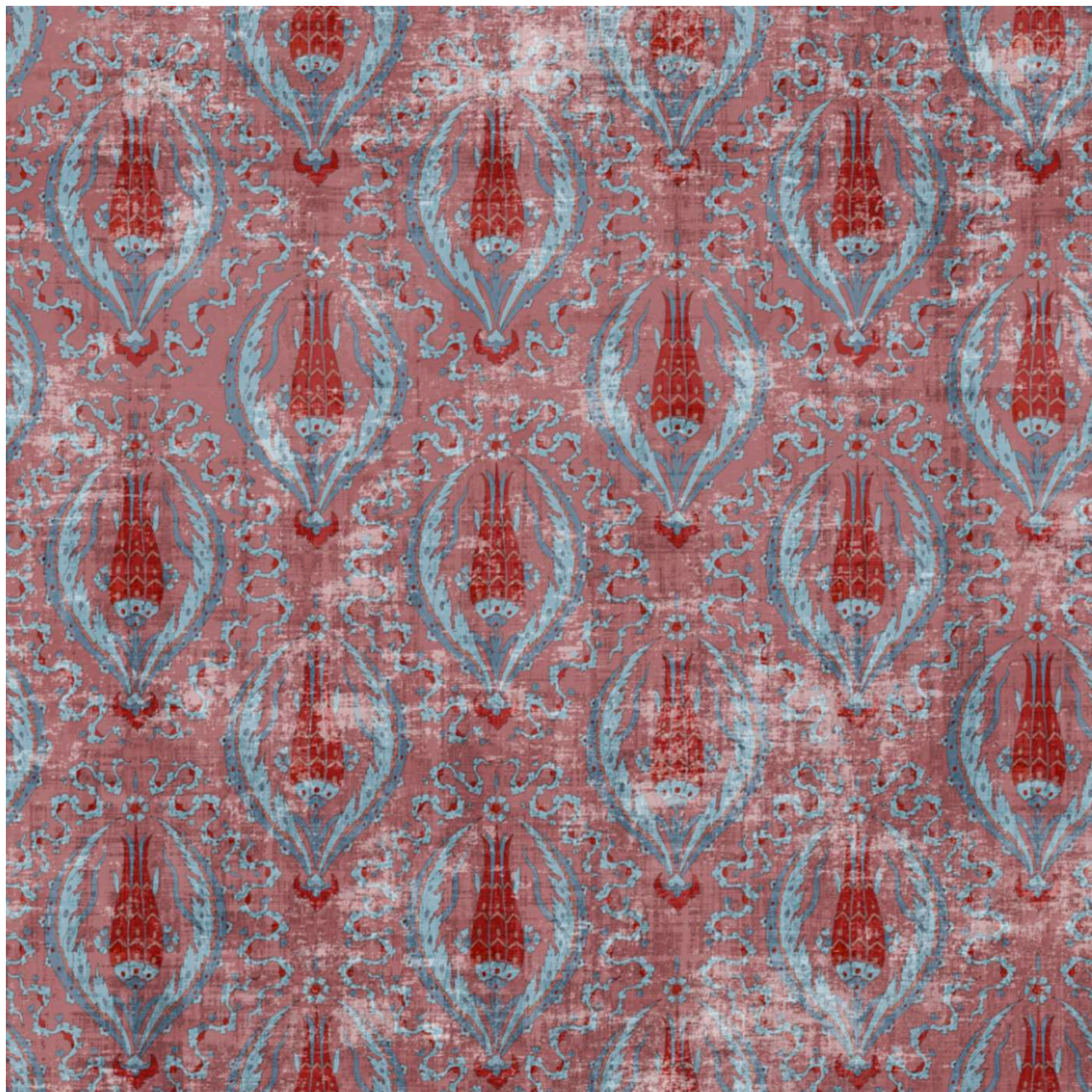
CONTENT: 100% COTTON VELVET  
VERTICAL REPEAT: 12.75" V / 32.38cm  
HORIZONTAL REPEAT: 54" H / 137cm  
WIDTH: 54 INCHES / 137 CM



NICOLETTE MAYER COLLECTION  
DESIGN NAME: TOPKAPI  
COLOR: TURQUOISE RED

CONTENT: 100% LINEN SHEER  
VERTICAL REPEAT: 144" V / 365.76cm  
HORIZONTAL REPEAT: 54" H / 137cm  
WIDTH: 54 INCHES / 137 CM





# nicolette mayer

## **NICOLETTE MAYER COLLECTION**

**DESIGN NAME:** BYZANTINE JEWEL

**COLOR:** RED

**DESIGN NUMBER:**

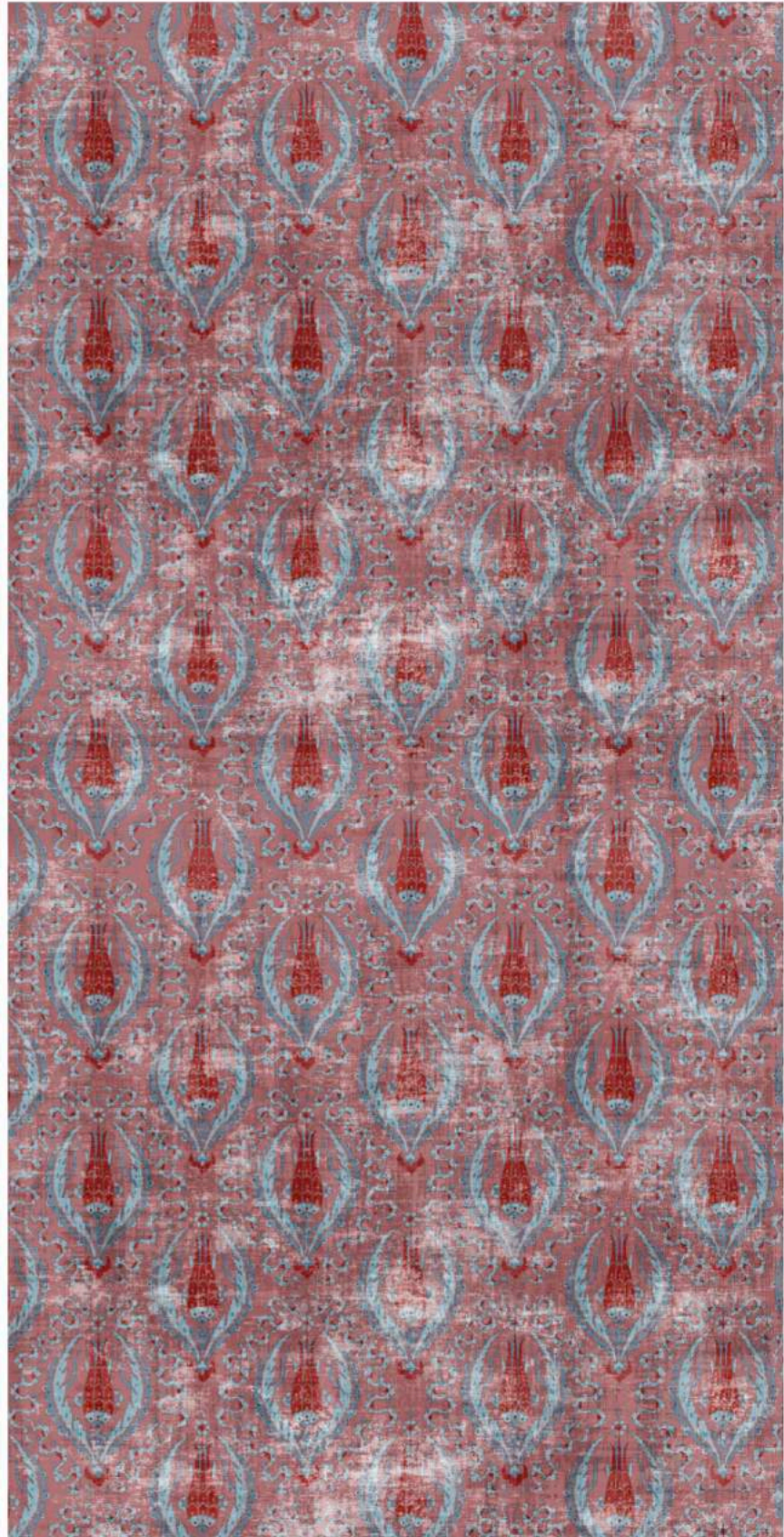
**ROLL SIZE:** 34" W X 8 YARDS / 86 cm X 7.3 m

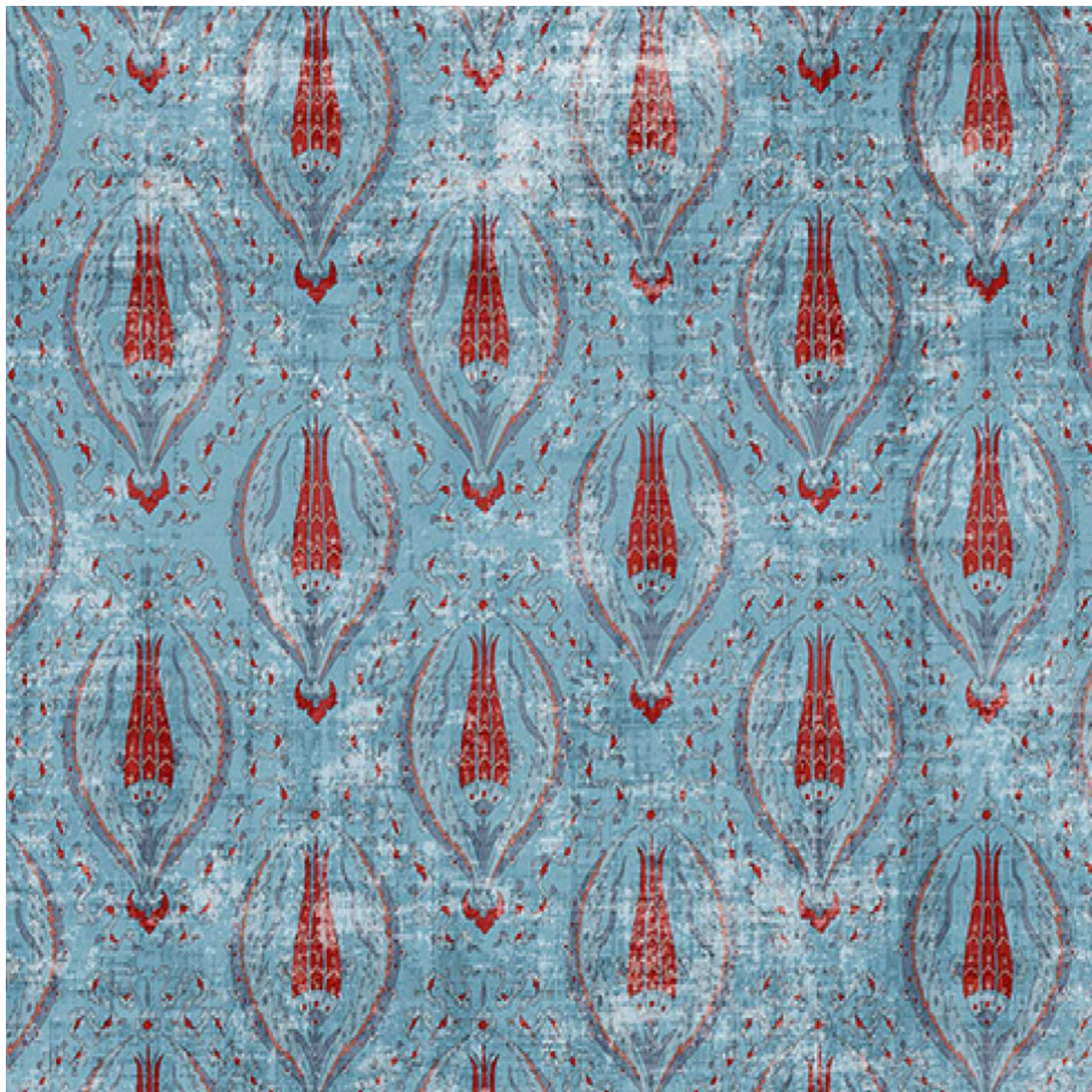
**REPEAT:** 8.5" V X 8.5" H / 21.59cm X 21.59 cm

GRASSCLOTH ON PAPER

"Inspired by traditional arabesque pomegranate patterns used in Turkish tiles, Byzantine is a Floral Ornamental pattern that evokes tulips, pomegranates and ribbons- themes used commonly throughout history in Ottoman decorative arts such as tile work, and Iznik ceramics."

*-Nicolette Mayer*





# nicolette mayer

## **NICOLETTE MAYER COLLECTION**

**DESIGN NAME:** BYZANTINE JEWEL

**COLOR:** BLUE

**DESIGN NUMBER:**

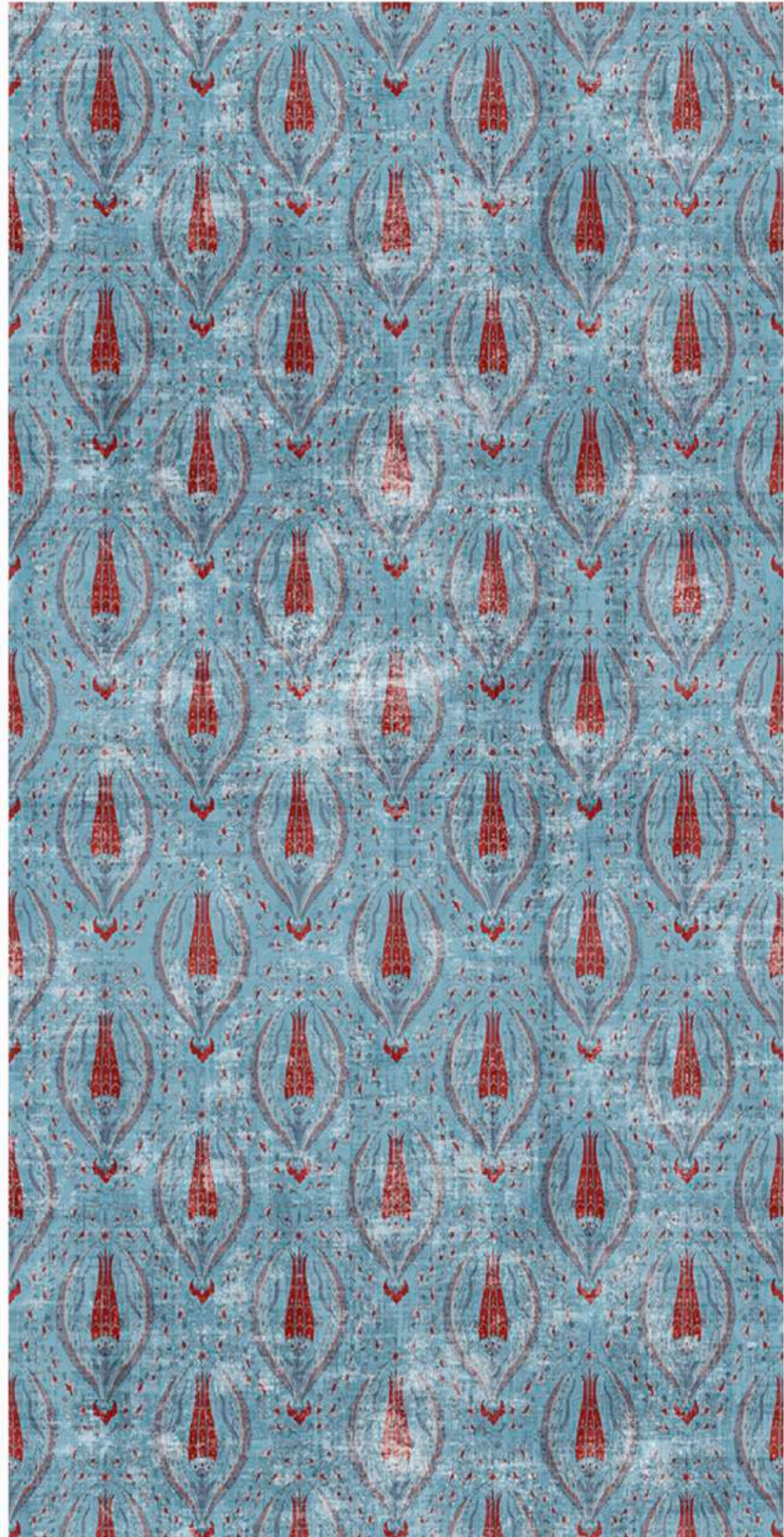
**ROLL SIZE:** 34" W X 8 YARDS / 86 cm X 7.3 m

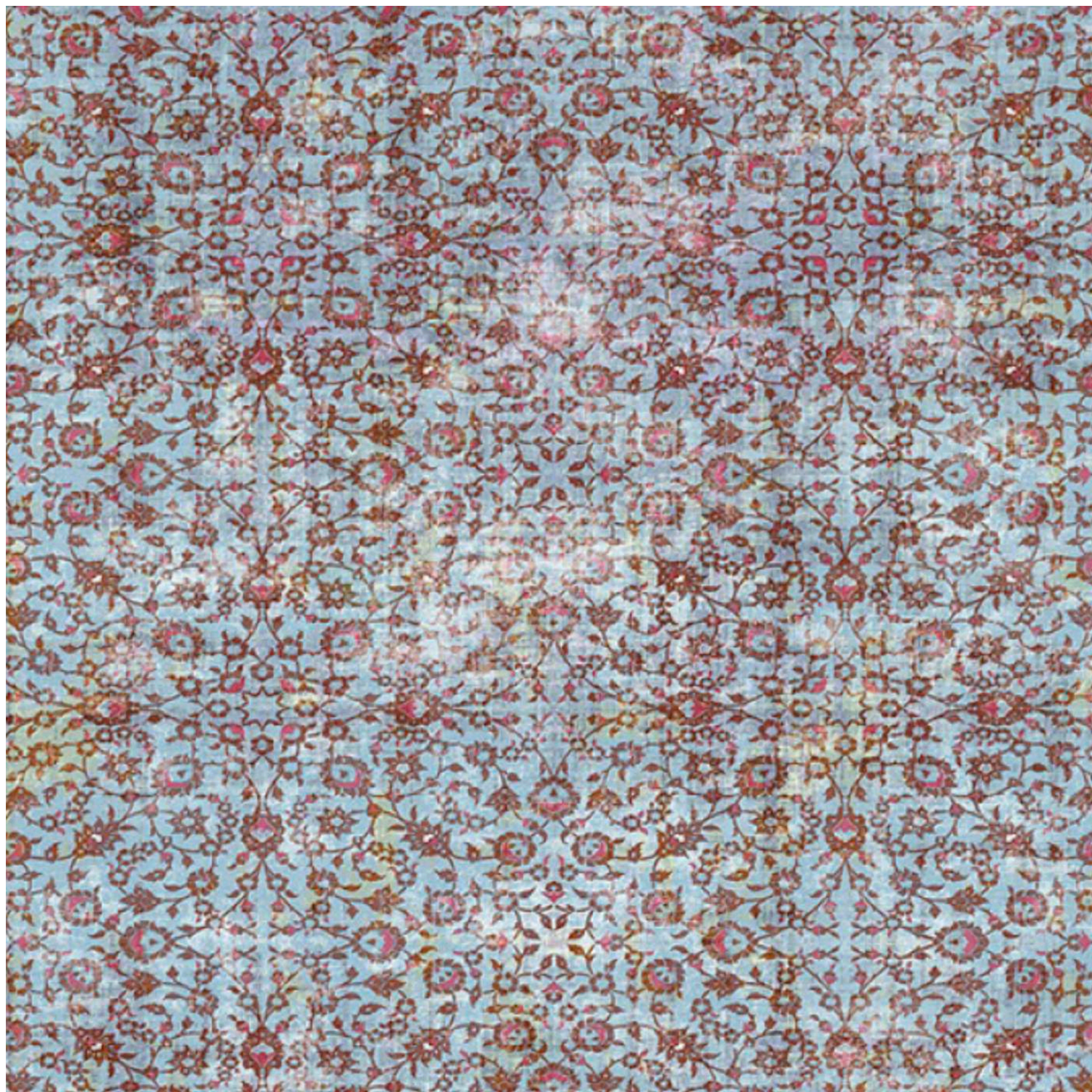
**REPEAT:** 8.5" V X 8.5" H / 21.59cm X 21.59 cm

GRASSCLOTH ON PAPER

"Inspired by traditional arabesque pomegranate patterns used in Turkish tiles, Byzantine is a Floral Ornamental pattern that evokes tulips, pomegranates and ribbons- themes used commonly throughout history in Ottoman decorative arts such as tile work, and Iznik ceramics."

*-Nicolette Mayer*





nicolette mayer

**NICOLETTE MAYER COLLECTION**

**DESIGN NAME:** IZNIK OVERDYE

**COLOR:** TURQUOISE RED

**DESIGN NUMBER:**

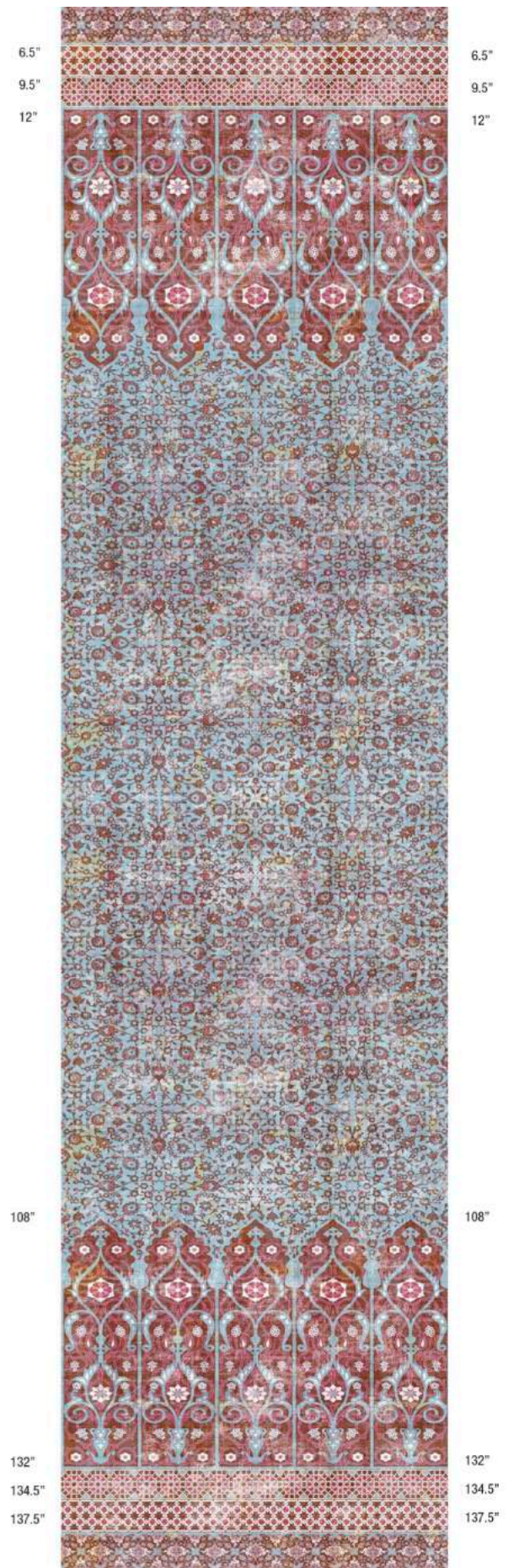
**ROLL SIZE:** 34" WIDE X 4 YARDS / 86.5 cm X 3.65m

**REPEAT:** 144" HIGH / 3.65m

GRASSCLOTH ON PAPER

"Topkapi Palace, Iznik style pottery, and the beautiful carpets in Palaces old and new, we tried to dream and reimagine an ideal Ottoman-inspired new kind of chic. Colors that are fresh and modern, blended with themes that date back hundreds of years, Topkapi Garden includes sumptuous velvets and Belgian linens, with metallic grasscloth wallpapers and wall panels. Wall panels that are uniquely designed to be cuttable at popular and 9', 10' and 12' wall heights, solving many typical issues designers have. Topkapi Garden is a pattern inspired by the Iznik tiled wall mural at the Topkapi Palace, in Istanbul, Turkey. A garden of cypress trees, tall as minarets and underplanted with hyacinth bells, has been immortalized on tiles in an alcove in the harem, once the most private—and forbidden—part of the palace."

*-Nicolette Mayer*



Please contact your local representative showroom



nicolette mayer

**NICOLETTE MAYER COLLECTION**

**DESIGN NAME:** TOPKAPI GARDEN

**COLOR:** TURQUOISE RED

**DESIGN NUMBER:**

**ROLL SIZE:** 34" WIDE X 4 YARDS /86.5 cm X 3.65m

**REPEAT:** 144" HIGH / 3.65m

GRASSCLOTH ON PAPER

"Topkapi Palace, Iznik style pottery, and the beautiful carpets in Palaces old and new, we tried to dream and reimagine an ideal Ottoman-inspired new kind of chic. Colors that are fresh and modern, blended with themes that date back hundreds of years, Topkapi Garden includes sumptuous velvets and Belgian linens, with metallic grasscloth wallpapers and wall panels. Wall panels that are uniquely designed to be cuttable at popular and 9', 10' and 12' wall heights, solving many typical issues designers have. Topkapi Garden is a pattern inspired by the Iznik tiled wall mural at the Topkapi Palace, in Istanbul, Turkey. A garden of cypress trees, tall as minarets and underplanted with hyacinth bells, has been immortalized on tiles in an alcove in the harem, once the most private—and forbidden—part of the palace."

*-Nicolette Mayer*



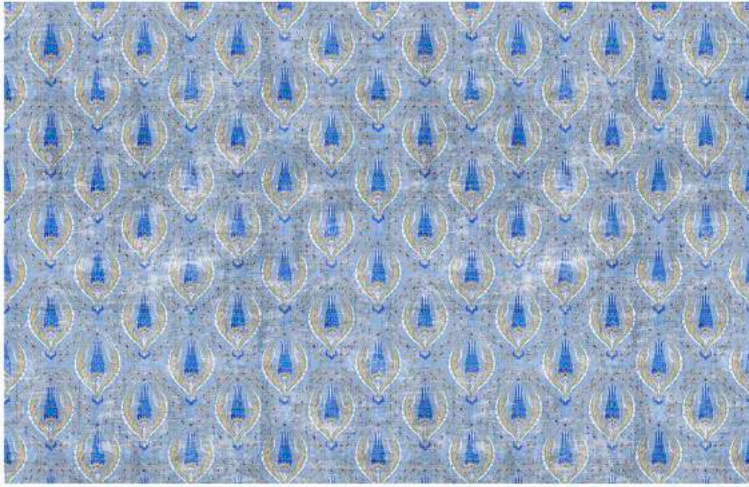
Please contact your local representative showroom





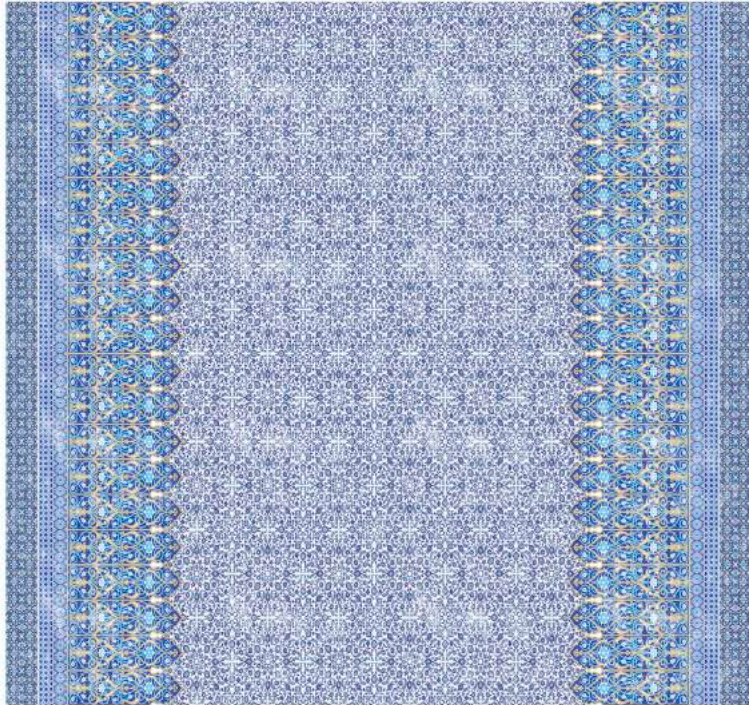


nicolette mayer



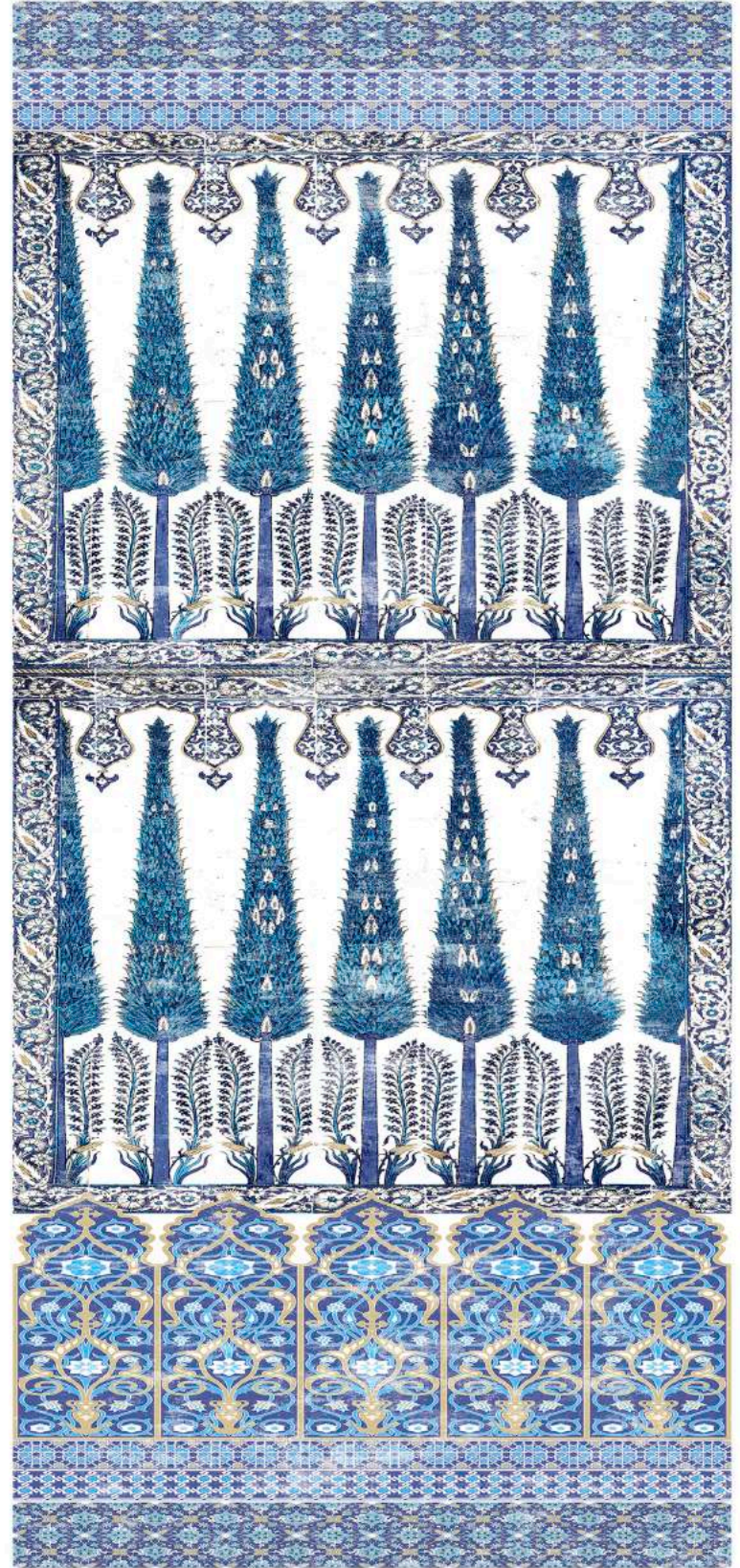
NICOLETTE MAYER COLLECTION  
DESIGN NAME: BYZANTINE  
COLOR: CLASSIC

CONTENT: 53% LINEN, 47% COTTON  
VERTICAL REPEAT: 6.75" V / 17.1cm  
HORIZONTAL REPEAT: 6.75" H / 17.1cm  
WIDTH: 54 INCHES / 137 CM



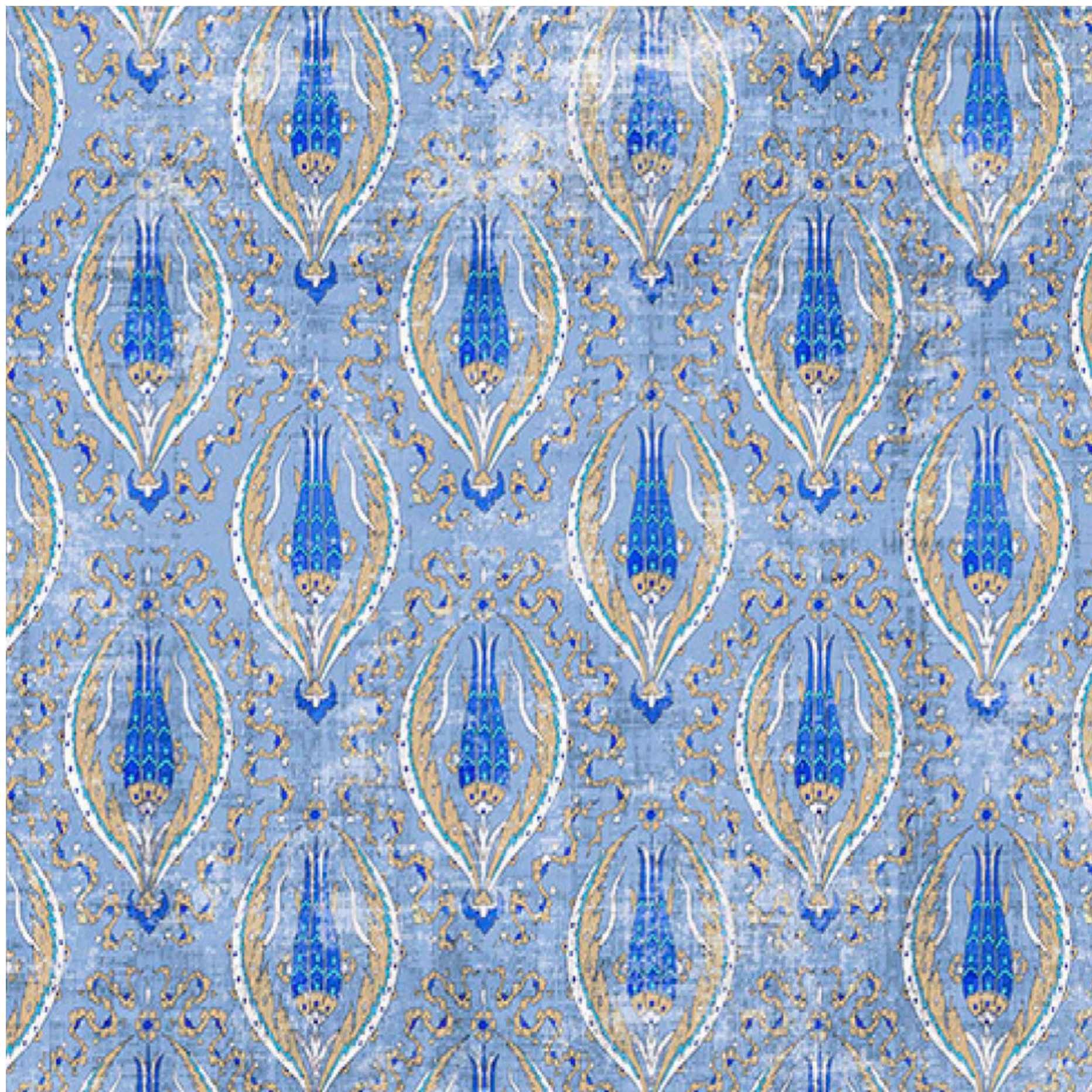
NICOLETTE MAYER COLLECTION  
DESIGN NAME: SULTAN  
COLOR: CLASSIC

CONTENT: 100% COTTON VELVET  
VERTICAL REPEAT: 12.75" V / 32.38cm  
HORIZONTAL REPEAT: 54" H / 137cm  
WIDTH: 54 INCHES / 137 CM



NICOLETTE MAYER COLLECTION  
DESIGN NAME: TOPKAPI  
COLOR: CLASSIC

CONTENT: 100% LINEN SHEER  
VERTICAL REPEAT: 144" V / 365.76cm  
HORIZONTAL REPEAT: 54" H / 137cm  
WIDTH: 54 INCHES / 137 CM



# nicolette mayer

## **NICOLETTE MAYER COLLECTION**

**DESIGN NAME:** BYZANTINE JEWEL

**COLOR:** CLASSIC

**DESIGN NUMBER:**

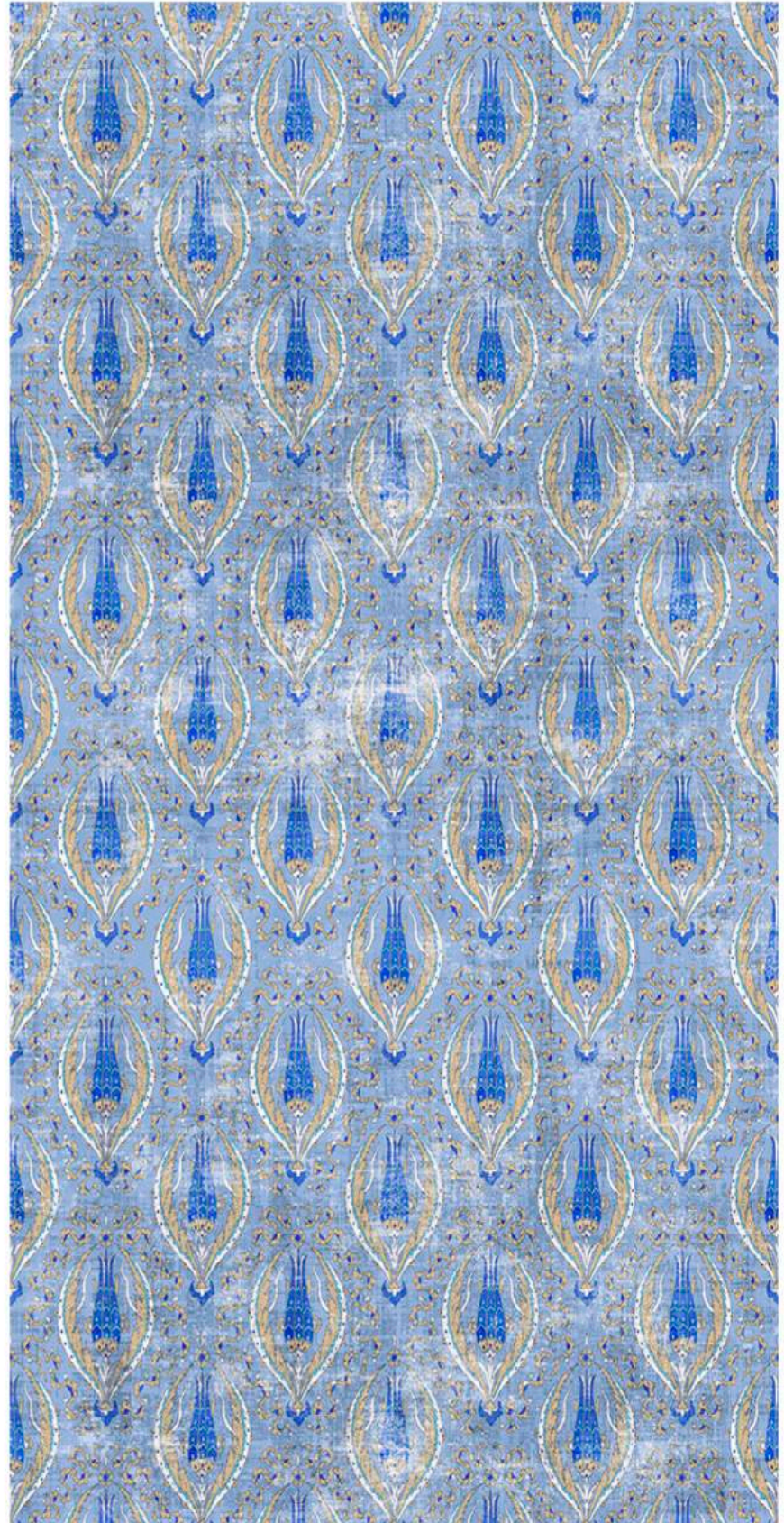
**ROLL SIZE:** 34" W X 8 YARDS / 86 cm X 7.3 m

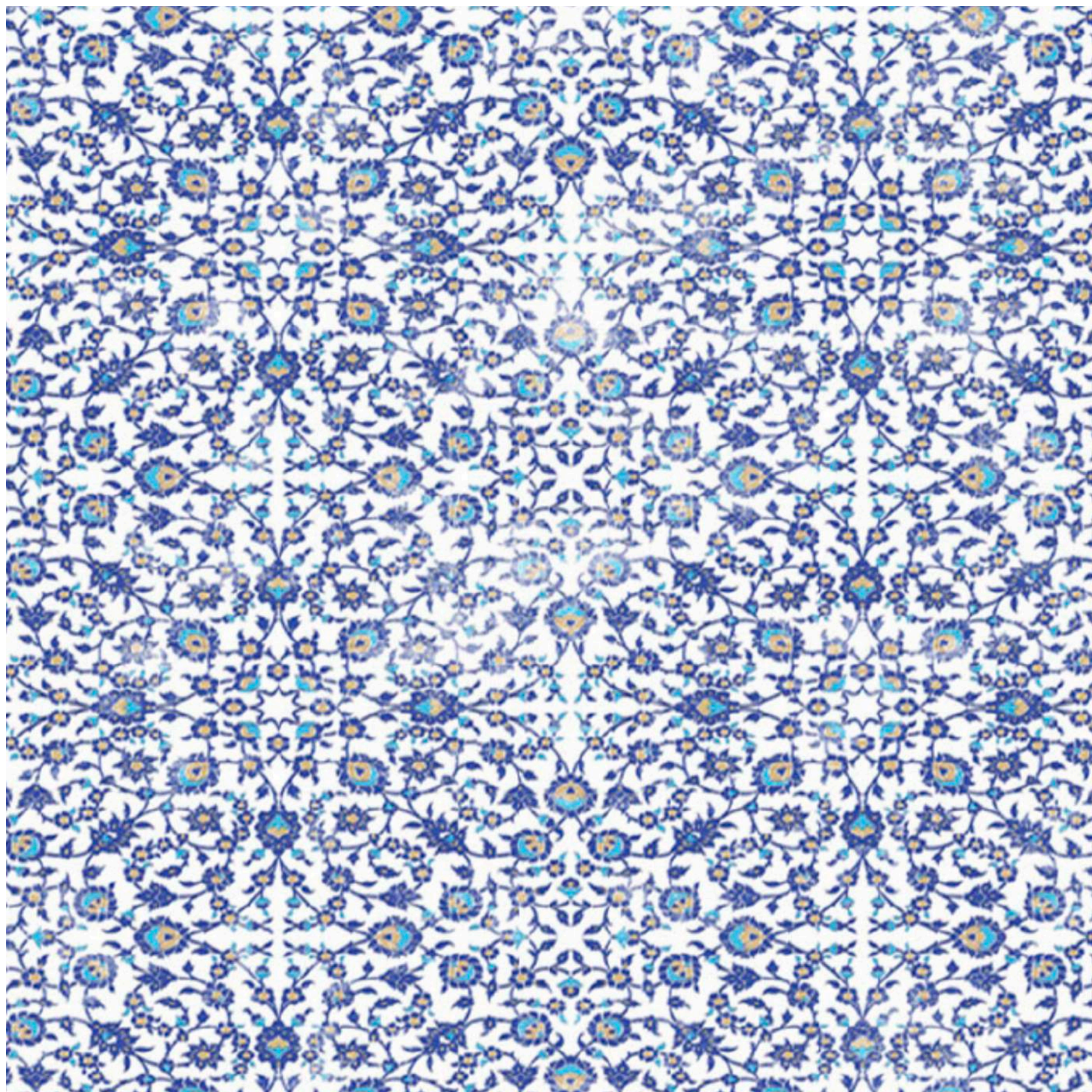
**REPEAT:** 8.5" V X 8.5" H / 21.59cm X 21.59 cm

GRASSCLOTH ON PAPER

"Inspired by traditional arabesque pomegranate patterns used in Turkish tiles, Byzantine is a Floral Ornamental pattern that evokes tulips, pomegranates and ribbons- themes used commonly throughout history in Ottoman decorative arts such as tile work, and Iznik ceramics."

*-Nicolette Mayer*





# nicolette mayer

## **NICOLETTE MAYER COLLECTION**

**DESIGN NAME:** IZNIK OVERDYE

**COLOR:** CLASSIC

**DESIGN NUMBER:**

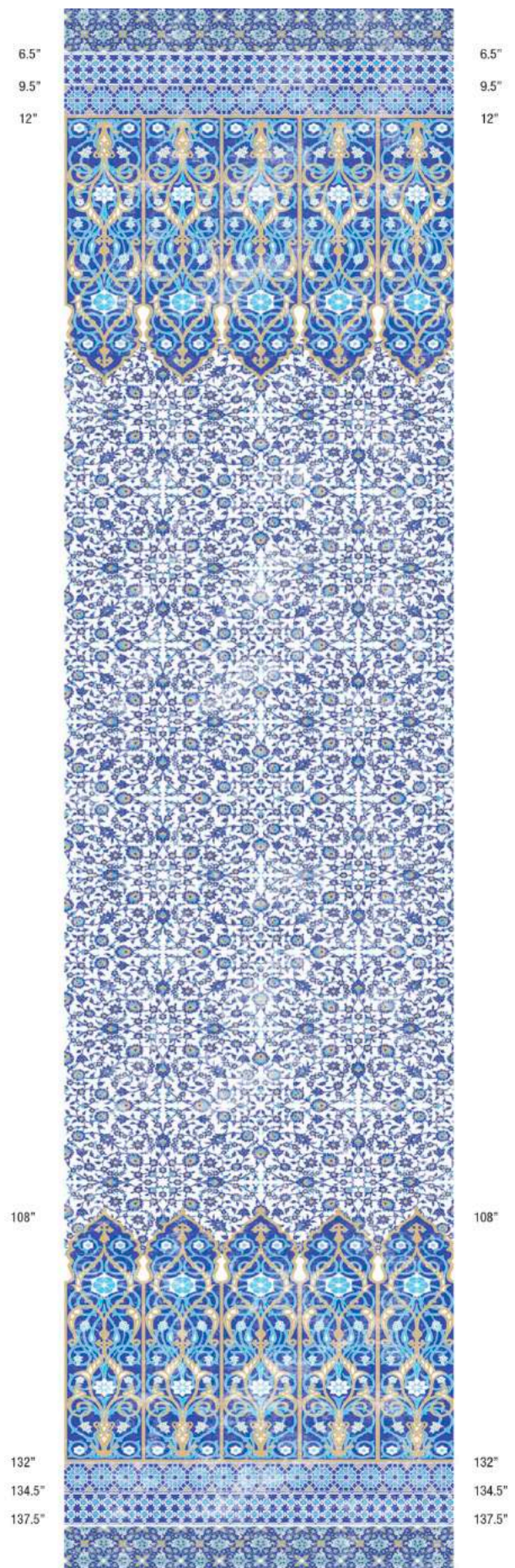
**ROLL SIZE:** 34" WIDE X 4 YARDS / 86.5 cm X 3.65m

**REPEAT:** 144" HIGH / 3.65m

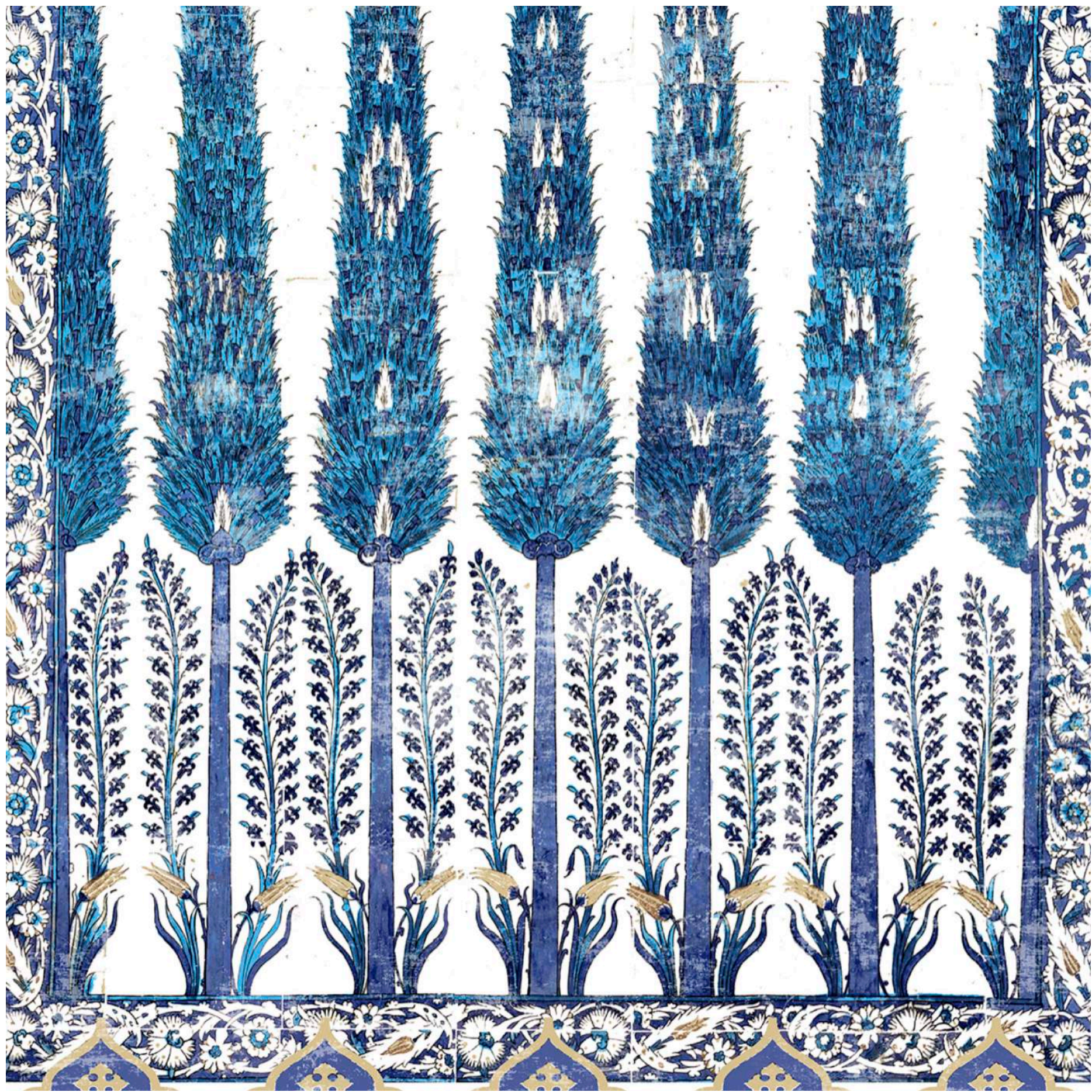
GRASSCLOTH ON PAPER

"Topkapi Palace, Iznik style pottery, and the beautiful carpets in Palaces old and new, we tried to dream and reimagine an ideal Ottoman-inspired new kind of chic. Colors that are fresh and modern, blended with themes that date back hundreds of years, Topkapi Garden includes sumptuous velvets and Belgian linens, with metallic grasscloth wallpapers and wall panels. Wall panels that are uniquely designed to be cuttable at popular and 9', 10' and 12' wall heights, solving many typical issues designers have. Topkapi Garden is a pattern inspired by the Iznik tiled wall mural at the Topkapi Palace, in Istanbul, Turkey. A garden of cypress trees, tall as minarets and underplanted with hyacinth bells, has been immortalized on tiles in an alcove in the harem, once the most private—and forbidden—part of the palace."

*-Nicolette Mayer*



Please contact your local representative showroom





# nicolette mayer

## **NICOLETTE MAYER COLLECTION**

**DESIGN NAME:** TOPKAPI GARDEN

**COLOR:** CLASSIC

**DESIGN NUMBER:**

**ROLL SIZE:** 34" WIDE X 4 YARDS / 86.5 cm X 3.65m

**REPEAT:** 144" HIGH / 3.65m

GRASSCLOTH ON PAPER

"Topkapi Palace, Iznik style pottery, and the beautiful carpets in Palaces old and new, we tried to dream and reimagine an ideal Ottoman-inspired new kind of chic. Colors that are fresh and modern, blended with themes that date back hundreds of years, Topkapi Garden includes sumptuous velvets and Belgian linens, with metallic grasscloth wallpapers and wall panels. Wall panels that are uniquely designed to be cuttable at popular and 9', 10' and 12' wall heights, solving many typical issues designers have. Topkapi Garden is a pattern inspired by the Iznik tiled wall mural at the Topkapi Palace, in Istanbul, Turkey. A garden of cypress trees, tall as minarets and underplanted with hyacinth bells, has been immortalized on tiles in an alcove in the harem, once the most private—and forbidden—part of the palace."

*-Nicolette Mayer*



Please contact your local representative showroom











For Representatives: +1 561 241 6906 info@nicolettemayer.com #NicoletteMayer www.nicolettemayer.com